



**WHEN IT RAINS
IT DRAINS**



> *Our Biosphere* <

EARTH 2009

Our Water:



EARTH 2009



Our Water:

97% salt water

2% frozen water

EARTH 2009



Our Water:

97% salt water

2% frozen water

0.9% ground water

**Only 0.1% fresh
surface water !!!**

EARTH 2009

0.1 % fresh surface water =

330 trillion gallons

Adult human = 60% water

0.1 % fresh surface water =

330 trillion gallons

Adult human = 60% water

← **So, this guy, approx 180 lbs =
approx 13 gallons of water**

***And he needs to consume
over a half gallon a day !!!***



0.1 % fresh surface water =

330 trillion gallons

Adult human = 60% water

← **So, this guy, approx 180 lbs =
approx 13 gallons of water**

***And he needs to consume
over a half gallon a day !!!***

World population = 7 billion

***That's 4 billion gallons a day,
or 1 ½ trillion gallons a year.***



**Okay, 1 ½ trillion gallons a year is only 0.5%
of our 330 trillion gallons fresh surface water.**

**Okay, 1 ½ trillion gallons a year is only 0.5%
of our 330 trillion gallons fresh surface water.**

But not all of that water is in reservoirs...

Okay, 14.6 trillion gallons a year is only 4%
of our 330 trillion gallons fresh surface water.

But not all of that water is in reservoirs...





Stormwater Management Plan Annual Report 2008



What is Stormwater ?

rain or melting snow that
doesn't soak into the ground
but runs off into waterways

Why is it a problem ?

as it flows, runoff collects
pollutants which degrade
lakes, rivers and wetlands

Minimum Measure 1:

Public Education and Outreach in Storm Water Impacts



Webpage

stormwater@ardsleyvillage.com



This year

-ardsleyvillage.com: AR, SW Tips
SW video link, SW Survey,
SW Management Plan

-groups.yahoo.com/group.Ardsley-Village: Clean-up events,
County Clean-up Days

Next year

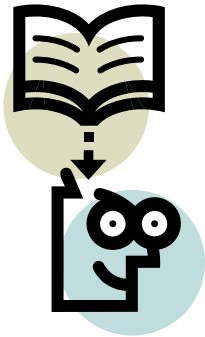
-Rain Barrel event

-New SW Survey

**NEED RESPONSES FOR
MEASURABLE GOAL !!!**

Minimum Measure 1:

Public Education and Outreach in Storm Water Impacts



Printed Matter



This year

- Available at Village Hall & Comm. Center
- Library: SWMPAR's, ESC & IDDE Laws...Env. Articles...Bx Riv Report
- Village Newsletters

Next year

- Library material on CD's

Minimum Measure 1:

Public Education and Outreach in Storm Water Impacts



Media



This year

- SW “Commercial”
- Channel 12 Westchester County PSA’s

Next year

- New Village programming

Minimum Measure 2: Public Involvement / Participation



Public programs



This year

- Scouts Clean-up
THANK YOU CUB SCOUT PACK 3 !
- Bicentennial Planting / Earth Day
Erosion Awareness Event
**THANK YOU SCOUTS, DPW, REC,
EAC, TR.'s NARDECCHIA & PORCINO!**
- SMRC Clean-up and Restoration

Next year

- Scouts Clean-up
- AHS Env Sci Rain Barrel/Rain Garden
- Eagle Scout Storm Drain project

Minimum Measure 3:

Illicit Discharge Detection and Elimination

Inspection & prevention



This year

- 26% Outfalls tested this year
THANK YOU JESSE GOUREVITCH !
- One Outfall warning notice issued
- Nearly 100% enclosure compliance
- Recycling bins in the parks
THANK YOU S. PORCINO, EAC !

Next year

- Continue until all outfalls have been tested & repeat cycle
- “Clean up after your pet” signs

Minimum Measure 4:

Construction Site Stormwater Runoff Control

Require erosion and sedimentation controls



This year

- 1 new project (County)
- 1 violation issued (DEC), problem corrected
- ESC Law updated

Next year

- Continue policy
- Applies to all new construction and tear-downs

Minimum Measure 5:

Post-Construction Stormwater Management



Inspection and maintenance program



This year

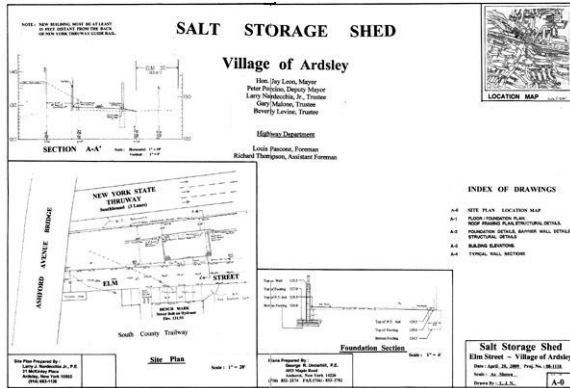
- Applied for BRWI / NFWF grant for Ashford Park project

Next year

- Apply for Ashford Park retention basin upgrade funds
- Consider Village Green practice re-design for easier maintenance

Minimum Measure 6:

Pollution Prevention / Good Housekeeping

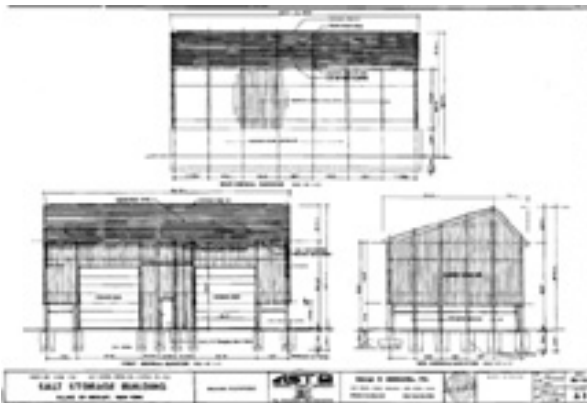


This year

- New Salt Shed at Highway Dept to be constructed this summer

THANK YOU TR. NARDECCHIA FOR THE SITE PLAN !

Municipal Operations



Next year

- Continue Best Management Practices

Minimum Measure 6:

Pollution Prevention / Good Housekeeping

Catch basin and storm drain cleaning



This year

- 113 CB's cleaned this year (25 more than last year)
- 17 CB's repaired and rebuilt

GOOD JOB HIGHWAY !

Next year

- Continue DPW schedule

***TRY A
LAWN
ALTERNATIVE***



***KEEP OUR
COMMUNITY
CLEAN***

**ALL OF ARDSLEY
IS OUR HOME**





**WHEN IT RAINS
IT DRAINS**