

<u>Page(s)</u>	<u>Table of Contents</u>
1	Village of Ardsley Watershed Map
2 - 5	Minimum Measure 1: Public Outreach and Education General Plan Implementation: updated annually
6 - 7	Minimum Measure 2: Public Participation General Plan Activities: updated annually
8 - 9	Minimum Measure 3: Illicit Discharge Detection and Elimination General Plan Desktop Analysis Outfall Mapping Outfall Inspection Enforcement Policies IDDE Law: Village of Ardsley Local Law No. 8-2005
10 - 12	Minimum Measure 4: Pre-construction Erosion and Sediment Control General Plan SWPPP Preparation SWPPP Site Plan (< 1 acre) Inspection Form Full SWPPP Form (>1 acre) SWPPP Inspection Form Projects: 2003 – 2008 Projects: 2009 (updated annually) File Access ESC Law: Village of Ardsley Local Law No. 4-2008
13	Minimum Measure 5: Post-Construction Erosion and Sediment Control General Plan Sample Stormwater Practice Maintenance Agreement Municipal Stormwater Practices: 2003 – 2008 2009 (updated annually) Planned
14 - 16	Minimum Measure 6: Municipal Good Housekeeping General Plan Street Sweeping Catch Basin and Storm Drain Maintenance Garbage Collection and Recycling

Page(s)

Asphalt Use
Road Salt Application
Vehicle Maintenance
Landscape Maintenance Methods
Education and Training
BMP Manual

17	Stormwater Management Personnel Personnel Diagram
18	Stormwater Management Budget Budgets 2007 - 2011
19	Stormwater Inter-municipal Agreements
20	Stormwater Websites
A1 – A2	Appendix A: Business “Hot Spots” Maps
B1 – B4	Appendix B: Outfall Maps
C1 – C33	Appendix C: Outfall Inspection Sheets
D1 – D10	Appendix D: IDDE Law
E1 – E15	Appendix E: Stormwater Pollution Prevention Documents for Construction
F1 – F18	Appendix F: ESC Law
G1 – G8	Appendix G: Best Management Practices for Municipal Housekeeping
H1 – H11	Appendix H: Storm Drain Inventory

Village of Ardsley Watershed Map



Lower Hudson River Drainage Basin:

H-4 Saw Mill River (1301-0007)
Saw Mill River, Middle, and tribs (1301-0100)
POC – floatables, dissolved oxygen/oxygen demand,
phosphorus, pathogens
Source – Urban/Storm Runoff, Sanitary Discharges

Atlantic Ocean/Long Island Sound Drainage Basin:

(MW2.4) ER-3 Bronx River, Upper, and tribs (1702-0107)
POC – dissolved oxygen/oxygen demand, pathogens
Source – Urban/Storm Runoff



Minimum Measure 1: Public Outreach and Education**General Plan:**

The Village of Ardsley is situated in two watershed regions. Water from the Village drains to the Hudson River via the Saw Mill River on the west side, while water drains to the Bronx River via the Sprain Brook on the east side. Pollutants of Concern (POC's) for the Village of Ardsley are included in the New York State 303d list. Floatable trash must be reduced in the Saw Mill River, and effective 2010, pathogens and phosphorus must be reduced, and dissolved oxygen increased. Pathogens must be reduced and dissolved oxygen increased in the Bronx River.

Outreach and educational techniques to address POC issues:

Stormwater Management Program Annual Report:

Hard copies of the SMP Annual Reports are available at Village Hall and the Library. Reports may also be viewed online at http://www.ardsleyvillage.com/stormwater_management.html.

Village Board Updates:

Stormwater Management Assistant (SMA) appears quarterly at Village Board meetings to present seasonal stormwater topics, as well as discuss pertinent laws, grant applications and activities. Meetings are televised via cable access television. Mayor, Board of Trustees, Village Manager, Village Clerk, Village Attorney, Police Chief and Fire Chief attend meetings. Meeting is re-broadcast daily. Village Board Minutes are available online at the Village website.

Cable Access Television Public Service Announcement:

A Stormwater Management presentation airs several times daily. Presentations range from 15 minute educational videos to 1 minute "infomercial" type formats. The SW presentation airs for one year. A new production begins airing in February of each year.

Village of Ardsley Website: www.ardsleyvillage.com

There is a "Stormwater Project" section (www.ardsleyvillage.com/stormwater.html) under "Government". Subsections include:

www.ardsleyvillage.com/stormwater_hotline.html : This is an online "hotline". Reporting is emailed to stormwater@ardsleyvillage.com. The reports are received by the Village Manager and Stormwater Management Assistant. Information is forwarded as necessary to Stormwater Management Officer, Highway Department and Police Department for resolution of problems and enforcement of regulations.

www.ardsleyvillage.com/stormwater_management.html: This page has a link to the Village of Ardsley YouTube stormwater video. There is a brief SW News section on this page. Also, .pdf files of all SWMP Annual Reports can be downloaded from this site.

www.ardsleyvillage.com/stormwater_tips.html: This is a page of 10 Stormwater Tips for residents.

www.ardsleyvillage.com/stormwater_raingarden.html: This page contains a link to the SWMP_rain_garden.pdf document which has details about the Village of Ardsley demonstration rain garden.

Content is added and edited as needed on the website.

<http://groups.yahoo.com/group/Ardsley-Village/> : This is the Village of Ardsley chat group. Stormwater information and discussion of stormwater issues are posted periodically.

Official Village email is now sent directly via "Constant Contact". The Village has been compiling a list of email addresses since July 2010. SW announcements will be included.

Village of Ardsley

NYR20A316

Stormwater Literature:

USEPA and NYSDEC SW brochures are available at Village Hall, the Community Center and the Library. Literature is replenished as needed. Brochures are also distributed at all Village Stormwater Outreach events. There is a collection of stormwater and water conservation scientific articles in the Stormwater section at the Library. Copies of all SW Annual Reports, past and present, are available at Village Hall and the Library. Information for builders and contractors is available at Village Hall. Current copies of the NYS Stormwater Design Manual and NYS Erosion and Sedimentation Control Guidelines are available from the Stormwater Management Officer, to be used at Village Hall; these manuals are also available on disc and may be viewed or copied as needed.

Public Meetings:

The Stormwater Management Assistant presents outreach lectures to local civic groups. Prior to all SW activities, there are preparatory meetings which include a general overview of the Phase II Program.

Business Outreach:

A specific effort has been made to advise “hot spot” local businesses regarding Phase II responsibilities.

Village Newsletter:

The Ardsley Villager is published at least twice a year. Issues contain a “Stormwater Update” article which details seasonal SW information and upcoming Outreach events.

Implementation:

Full details regarding Outreach and Education can be found in Phase II Stormwater Management Program Annual Reports which are available at Village Hall, the Library and online at the Village Website.

2003-4 (SW Year 1):

- VB meetings: present MS4 NOI, SWMP Annual Report
- Plan SW webpage with Village Webmaster
- SW Literature distributed
- Cable Access TV airing SWM Program plan twice daily
- Recycling Program in place

2004-5 (SW Year 2):

- VB meetings: Stenciling program, “Hotline”, “Name That Drain”, ESC Law public hearings
- Beautification Committee meetings
- Scout meetings: Phase II presentations
- Business Outreach: Phase II letters and “After the Storm” brochure
- SW Webpage: “Hotline”, “Name That Drain”
- SW Literature distributed
- Village Newsletter: Stormwater Phase II
- CATV: Clean up programs
- Dog Licensing Drive
- Leaf Bag Law amendment

2005-6 (SW Year 3):

- VB meetings: Bronx River Coalition MOA, IDDE Law, Saw Mill River Coalition MOA
- Community meetings: Rain Garden (Scouts), Park Planting (Parks & Rec), Garden Club, Outfall Mapping (SW Intern), Chamber of Commerce
- Outfall Mapping: door-to-door visits
- Webpage: post Annual Reports, Clean up event information, Recycling information

Village of Ardsley

Ardsley Village Yahoo Group: SW event information
 SW Literature distributed
 CATV: “After the Rain” video
 Village Newsletter: Eagle Scout project, IDDE Law

2006-7 (SW Year 4):

VB meetings: Retention basin maintenance, NYSDEC Outfall grant, Salt Shed EAF, Outfall Mapping plan, SWMP Annual Report
 GIS Training: Westchester County IT
 Recreation Commission meetings: Rain Garden
 Community Meetings: League of Women Voters rep., Ardsley High School Env Sci class
 Outfall Mapping: door-to-door visits
 Webpage: Rain Garden page, Highway Dept information added to Village website
 SW Literature distributed
 CATV: Stormwater “Commercial”

2007-8 (SW Year 5):

VB meetings: SW District, Outfall Testing, County IMA (MM1/MM2 grant), Town GIS grant, SWMP Annual Report
 GIS Training: Westchester County IT, Town of Greenburgh Assessor
 Ardsley Day SW information table
 Community Meetings: Ardsley High School Env Sci, Ardsley Improvement Committee
 Environmental Advisory Committee: reestablished, Susan Porcino, Chair
 Outfall Testing: door-to-door visits
 Business Outreach: “Hot Spot” visits
 Website: Compost Bin Sale, Westchester County Household Chemical Clean up days
 SW Literature distributed
 Village Newsletter: Household Chemicals, GIS, No Snow in the ROW
 Ardsley School District Newsletter: IPM
 CATV: “After the Storm” (EPA/Weather Channel)

2008-9 (SW Year 6):

VB meetings: Geosynthetic SW Treatment, ESC Law revision, Westchester County Fertilizer Law, SWPPP Review Process, SWMP Annual Report
 Village Newsletter: “H₂O = \$”, “Don’t ‘P’ on the Lawn”, “Muddy Waters”, “The Pooper Scooper Law”
 Ardsley School District Newsletter: IPM
 Outfall Testing: door-to-door visits
 Business Outreach: “Hot Spot” visits
 Rivertowns League of Women Voters meeting (1/5/2009)
 SW Literature distributed
 CATV: Stormwater “Commercial” (produced 2006)
 Website: Online SW Survey, link to “Storman Speaks” Village of Ardsley SW Video (youtube.com), Yahoo Group discussion of SW upgrades to Macy Park

2009-10 (SW Year 7):

VB meetings: Pet Waste, Salt Shed, Storm Drain Mapping, SEMO Hazard Mitigation Plan, SWMP Annual Report
Village Newsletter: “More Fun Than a Barrel of ...Raindrops!”, “A Home for ‘Old Salts’”, “Little House on the Tributary”
Ardsley School District Newsletter: IPM
Outfall Testing: door-to-door visits
Ardsley Day SW information table
Concord Road Elementary School “Enviroscape” Program (2/8/2010-2/25/2010)
Pet Waste Awareness: 4 new signs posted, Biodegradable biobaggies distributed at Village Hall and Library
Library: SW information CD’s available to loan
SW Literature distributed
CATV: Stormwater “Commercial” (produced 2006)
Website: Rain Barrel webpage, SWM Plan update, links to Westchester County SW PSA’s, Biobaggie SW News

2010-11 (SW Year 8: to be updated and completed upon submission of SW Annual Report for period ending 3/2011):

VB meetings: Storm Sewer System Mapping, New “Greener” SW Techniques, Porous Pavement, Sustainable Gardening, Amend ESC Law
VB memos: Water Resources and Regional Economy
PB/ZB memos: ESC Law amendment
Village Newsletter: “Ardsley Climate Smart Community”, “Stormwater 101”, “Driveway Downspouts”, “Put Aside the Chloride”
Ardsley School District Newsletter: IPM
Outfall Testing: door-to-door visits
Ardsley Day SW information table
SMRC/Groundwork Hudson: SW Roundtable, Demo Rain Garden (bus shelter)
Americorps/Groundwork Hudson Phase II Outreach lecture
Westchester County IT: GIS Meeting Presentation: “Stormwater on a Shoestring”, meeting with Village staff to update ArcReader (Village Hall, Highway Department), add storm drains to ArcReader
SW Literature distributed
Village Email: direct email list begins 7/2010 (“Constant Contact”), 2011 Household Material Recovery Day email
CATV: Westchester County Planning PSA’s, Verizon Government Access Channel added
Website: SWM Plan update

Planned:

VB meeting: SW Annual Report (5/16/2011)
Village Website: BRWI project page (4/2011)
Village Newsletter: “It’s Not Easy Being Green...But Not Too Hard, Either!”(Spring 2011)
New “Storman” video (12/2011)
CR Elementary “Enviroscape” Presentation
AHS Environmental Science Club SW Presentation

Minimum Measure 2: Public Participation

General Plan:

Ardsley residents and business owners are actively engaged in achieving the goals of Phase II Stormwater Management in our Village.

Public participation efforts to address POC issues:

Village Board Meetings:

Village Board meetings are open to the public. Residents may speak about ideas and concerns regarding stormwater management, thus becoming actively involved in the program.

Village Clean-up Days:

There is an annual Village-wide Clean-up every spring which is sponsored by local Scout groups. The Stormwater Management Assistant advises and helps publicize the event and its significance to water body improvement.

Stormwater Outreach Events:

There is an Outreach event every spring. Outreach activities include planting on Village property with specific intent to educate about improvement of water quality facilitated by the type of plant installation. Other outreach activities have included drain stenciling and drain mapping. Outfall testing program includes student interns.

Implementation:

Full details regarding Public Participation can be found in Phase II Stormwater Management Program Annual Reports which are available at Village Hall, the Library and online at the Village Website.

2003-4 (SW Year 1):

VB meetings MS4 NOI presentation Q&A, SWMP Annual Report Q&A
Plan drain stenciling with Westchester County Planning Dept
Streamwalk volunteers

2004-5 (SW Year 2):

VB meetings: SWMP Annual Report Q&A
Clean up: Ashford Park
ESC Law: work sessions and public hearings
Drain stenciling: Girl Scouts and Cub Scouts, plan Eagle Scout project

2005-6 (SW Year 3):

VB meetings: IDDE Law hearings, SWMP Annual Report Q&A
Outfall Mapping: Village SW team including SW Intern
Saw Mill River Coalition "River RATS": riverbank restoration project
Drain Stenciling projects: Eagle Scout, Student Civic group
Clean up: Bicentennial Park

2006-7 (SW Year 4):

VB meetings: SWMP Annual Report Q&A
Outfall Mapping: Village SW team including SW Intern
Rain Garden installation
Planting event at Ashford Park

Village of Ardsley

NYR20A316

Saw Mill River Coalition: drain marking with Americorps, “Free-a-Tree” riverbank invasive vine removal, Great River Sweep Clean up
Clean up: Cub Scouts Village-wide

2007-8 (SW Year 5):

VB meetings: Eagle Scout ceremony, SWMP Annual Report Q&A
Outfall Testing: Village SW team including SW Intern
Ardsley High School Env Sci: Drain Mapping and Marking
Clean up: Cub Scouts Village-wide, Ashford Park “Clean Your Backyard Stream”

2008-9 (SW Year 6):

VB meetings: ESC Law revision, SWMP Annual Report Q&A
Outfall Testing: Village SW team including SW Intern
Erosion and Sedimentation Awareness/Bicentennial Park planting
SW Online Survey participation
EAC Earth Day Compost Bin Information at Ashford Park
Clean up: Cub Scouts Village-wide

2009-10 (SW Year 7):

VB meetings: SWMP Annual Report Q&A
Outfall Testing: Village SW team including SW Intern
Rain Barrel/Rain Garden Installation at McDowell Park: AHS Environmental Science Club
Stormwater Infrastructure Mapping Project: Eagle Scout
BRWI Project: Sprain Brook Stream bank Invasive Vine Removal/Eagle Scout
Clean up: SMRC “Free-a-Tree” (AHS students), Boy and Girl Scouts Village-wide, “Ardsley Cares”

2010-11 (SW Year 8: to be updated and completed upon submission of SW Annual Report for period ending 3/2011):

VB meetings: ESC Law revision, SWMP Annual Report Q&A
Outfall Testing: Village SW team including SW Intern
BRWI Projects: Stream bank Restoration Planting (“Trees for Tribes”), Rain Garden Installation, Sustainable Garden Installation/Eagle Scouts
“Plant-a-Flower” at Ashford Park Gazebo
“Ardsley Cares” Autumn Bulb Planting at Ashford Park Gazebo
Americorps/Groundwork Hudson Business Outreach SW Info Survey
Clean up: SMRC “Great Saw Mill River Clean up” (AHS students), “Ardsley Cares” Village-wide, Boy and Girl Scouts Village-wide, Earth Day AMS Students

Planned:

Scout Clean up (3/2011)
Earth Day Event (4/2011)
BRWI Project: Veterans’ Memorial Sign Sustainable Native Plant Garden (5/2011)

Minimum Measure 3: Illicit Discharge Detection and Elimination**General Plan:**

The Village of Ardsley is one square mile in area and is primarily residential property. Included as residential property are the Stonegate condominium complex, 6 acres, and the Woodlands Senior Housing, 8 acres. There are three school campuses, Concord Road Elementary School, Ardsley High School and OLPH School, comprising 48 acres, three churches comprising 2 acres, a municipal fire house and Village Hall covering 1 acre and a small downtown commercial area. The downtown area is retail only, non-industrial, and covers 28 acres along Route 9A. There are two municipal parks, Ashford and McDowell, and several pocket parks totaling 30 acres of Village property. Control of litter and pet waste are priorities to address POC's in Ardsley.

Desktop Analysis:

A review of all sites in the Village was prepared in 2007. "Hot Spot" businesses are noted in red. The Stormwater Management Assistant visited each of these businesses, spoke with owners to explain Phase II goals and distributed letters of introduction and SW literature.

Map of businesses is included in this plan (see Appendix A). Update is planned for 2012.

Outfall Mapping:

Village of Ardsley Stormwater Management undertook preliminary outfall mapping in beginning in 2005. Outfall mapping was completed in November 2006 under the auspices of NYSDEC Grant C302485. Field work was conducted by Azertia, Inc. with the help of the Stormwater Management Assistant.

Outfall maps are included in this plan (see Appendix B). Outfall photos are on file at the Highway Department and Village Hall.

Outfall Inspection:

Inspection of Village outfalls began in 2007. Thus far, the program has exceeded the recommended NYSDEC goal of inspecting 20% of all outfalls per year. Inspection protocol uses data forms provided by NYSDEC.

Sample inspection sheet is included in this plan (see Appendix C). Inspection data sheets for the Village are available for examination at Village Hall and the Highway Department Office.

No significant illicit discharges have been detected thus far. All outfalls in the Village will be inspected and the entire cycle will be repeated on a routine basis.

Enforcement Policy:

Complaints regarding littering, dumping, pet waste, spills or any other condition which may impact runoff water quality are received by Village Highway Department, Police Department and Village Hall staff.

All reports regarding stormwater are investigated by the Stormwater Management Officer in his capacity as Building Inspector. He is assisted by the SW Management Assistant.

Village of Ardsley**NYR20A316**

Ardsley Police Department patrols the Village and issues summonses for littering, dumping and improper pet waste disposal. Fines for dumping range from \$250 to \$2000 (Village Code 122-10) and improper pet waste disposal from \$25 to \$250 (Village Code 90-12).

Ardsley Highway Department regulates garbage collection and recycling. Summonses are issued for failure to separate organic leaf and grass clipping waste from household trash.

Ardsley Fire Department handles all cases involving spills in the Village. Members of the Fire Department are certified in Hazardous Material containment and clean-up. Spill cases are referred to the Police Department for enforcement as necessary.

Village of Ardsley IDDE Local Law No. 8-2005 was enacted and incorporated into the Village Code. Section 170-13 stipulates fines from \$350 to \$1000 for illicit discharge violations. The text of that law is included in this plan.

Records of any and all illicit discharges are published each year as part of the SWM Annual Report.

IDDE Law: Village of Ardsley Local Law No. 8-2005 (see Appendix D)

Minimum Measure 4: Construction Site Stormwater Runoff Control**General Plan:**

Sediment and floatables are pollutants of concern during all construction projects. Erosion control and trash entrapment practices must be installed and monitored during construction.

The Village of Ardsley is nearly completely built-out and very few undeveloped parcels remain. Moreover, remaining undeveloped parcels are primarily smaller than one acre in area. In addition, many construction projects are tear-down sites which had been previously developed.

The Village of Ardsley modified the standard NYS definition for “Land Development Activity” to include sites smaller than one acre if there is new development or a tear-down. Sites smaller than one acre require a Stormwater Site Plan and are inspected as stormwater practices are installed. Sites larger than one acre require a full Stormwater Management Pollution Prevention Plan (SWPPP) and full inspection protocol.

SWPPP Preparation:**SWPPP Site Plan (< 1 acre project):**

Plan must indicate location of sediment control practices to be used during the construction activities. Two foot topographic map is required. Plan must indicate location of permanent stormwater control practices. This plan is submitted for review and approval as part of the Site Plan Review process. A sample plan is included in this plan (see Appendix E).

Inspection Form (< 1 acre project):

Sediment control practices must be inspected weekly as part of overall site inspections. A sample inspection sheet is included in this plan (see Appendix E).

Full SWPPP (> 1 acre project):

A SWPPP may be organized in the following format:

- A. Narrative Report describes the general information about the site and the planned project.
- B. Maps are used to illustrate the location of the features and technical details of the site.
- C. Plan Components:

- Erosion and Sediment Control

- Water Quality Control

- Water Quantity Control

- D. Construction Sequence Schedule is a schedule of activities to be implemented during and after construction.

A sample SWPPP is included in this plan. Detailed instructions for preparation of a SWPPP are contained in “Instruction Manual for Stormwater Construction Permit” which is available at Village Hall from the Building Inspector (SMO).

The SWPPP must be approved by the Village of Ardsley (MS4). The SWPPP Acceptance Form is included in this plan (see Appendix E).

SWPPP Inspection Form (> 1 acre project):

Projects which require a SWPPP must be inspected according to the schedule outlined in “Article 2 Section 4.1 Maintenance and Inspection During Construction” and “Article 6 Section 1. Construction Inspection” of Local Law 4-2008. A sample Inspection Form is included in this plan (see Appendix E).

Construction Projects:

2003-4 (SW Year 1):

- 1015 Saw Mill River Road - > 5 acres (project began prior to 2003)
- Sylvia Avenue - > 3 acres (project began prior to 2003)

2004-5 (SW Year 2):

- No new projects > 1 acre

2005-6 (SW Year 3):

- 9 Concord Road - < 1 acre
- 15 Dellwood Lane - < 1 acre
- 14 Flintlock Lane - < 1 acre

2006-7 (SW Year 4):

- 505 Ashford Avenue - < 1 acre
- 9 American Legion Drive - < 1 acre
- 11 Dellwood Lane - < 1 acre
- 730 Saw Mill River Road - < 1 acre
- 2 Rest Avenue - < 1 acre

2007-8 (SW Year 5):

- 770 Saw Mill River Road - < 1 acre
(Macy Park/Saw Mill River Road - > 5 acres, Westchester County SPDES)

2008-9 (SW Year 6):

- No new projects > 1 acre

2009-10 (SW Year 7):

- 43 Riverview Avenue - < 1 acre
- 3A Elm Street (Village Salt Shed) - < 1 acre
- 8 Shady Road - < 1 acre

2010-11 (SW Year 8: to be updated and completed upon submission of SW Annual Report for period ending 3/2011):

File Access:

All active project records are kept in the Building Inspector Office.

Projects < 1 acre are kept as active files until 6 months following completion. Weekly field inspection reports are retained for 9 months following completion of the project. Final inspection report will contain all installed stormwater practices “as built”. Any stormwater-related violation files will be retained for 6 years as per Records Management policy.

For projects > 1 acre, all files will be maintained in perpetuity. They will remain in active files for 1 year following completion. After 1 year, they will be archived.

Village of Ardsley

NYR20A316

ESC Law: Village of Ardsley Local Law No. 4-2008 (see Appendix F)

LL 4-2008 was amended on December 20, 2010 to include new “green” stormwater techniques. As of February 2011, all applicable construction projects must follow guidelines as set forth in August 2010 edition of the NYS Stormwater Design Manual. The NYS SW Design Manual can be found at <http://www.dec.ny.gov/chemical/29072.html> , and a link to this Manual is posted on the Stormwater Management page of the Ardsley Village website www.ardsleyvillage.com.

Minimum Measure 5: Post-Construction Stormwater Management**General Plan:**

Final inspections, which include inspection of stormwater treatment practices, are conducted upon completion of all permitted construction projects in the Village. All stormwater control practices must receive final approval before a Certificate of Occupancy is issued.

Sample Stormwater Practice Maintenance Agreement:

A Sample Agreement is included in this plan. Please see Schedule B “Sample Stormwater Control Facility Maintenance Agreement” section of Village of Ardsley Local Law 4-2008 (see Appendix F).

Municipal Stormwater Practices:

As an MS4, the Village of Ardsley Highway Department installs and maintains a system of catch basins and storm drains throughout the Village. There is only one large-scale municipal stormwater practice in the Village. The Village Green Retention Basin (W 73° 50.8301’ N 41° 00.8049’), located on the southern border of Westchester County park property (Macy Park) and just west of Route 9A with a retaining wall that abuts the northbound lanes of the New York State Thruway, is a 0.55 acre facility which treats stormwater prior to release into the adjacent Saw Mill River. This large practice was constructed before 2003. There are two large-scale privately-owned stormwater treatment practices in the Village. Dellwood Retention Pond, installed prior to 2003 and located just south of Dellwood Lane (W 73° 49.9569’ N 41° 01.0974’), is 0.71 acres and contains an aeration pump system and trash collection booms at the pond inlet. Dellwood Pond is maintained by the Dellwood Residents Association. The Woodlands Senior Housing Development has two infiltration basins (W 73° 50.6267’ N 41° 01.3001’ and W 73° 50.6225’ N 41° 01.3448’) situated next to Route 9A which treat hillside runoff before entry to Macy Park and on to the Saw Mill River. These basins were installed in 2004 and Woodlands Housing is responsible for their maintenance.

Municipal SW Practices Installed Since 2003:

2003: Two storm drains and head wall installed at the northwest corner of McDowell Park, east of Jordan Lane.
One catch basin in the center of Field 1 at McDowell Park

2005: Village Green Retention Basin dredged

2007: One catch basin and head wall installed on Almena Road
Twenty-five catch basins repaired

2008: Three catch basins installed on Shady Road
Twenty catch basins repaired

2009: Eleven catch basins repaired
Seven drain lines flushed

2010: Twelve catch basins repaired

Planned:

2011: Additional catch basin installations as needed

Minimum Measure 6: Pollution Prevention/Good Housekeeping for Municipal Operations**General Plan:**

The Village of Ardsley Highway Department (Department of Public Works) provides all roadway and drainage maintenance, rubbish collection and public facility (municipal buildings, parks, sanitary sewer and storm sewer) maintenance for the Village. Some downtown merchants employ private carting companies and, together with Highway, strive for a reduction in floatables, POC, by proper containment and removal of trash. Ardsley Local Law No. 7-2005 requires fenced containment areas for commercial garbage. Highway department manual pick-up and automated street sweeping address the problem of pathogens, POC, by keeping areas free of pet waste. Sediment is also controlled in this manner.

A detailed accounting of all Highway Department activities is published yearly as part of the Stormwater Management Program Annual Report prepared in compliance with Phase II requirements.

Street Sweeping:

A professional street sweeping service works under contract for the Village. Streets are cleaned every other week during the spring season and every week during the fall. All leaves and garden waste is bagged separately and carted to organic waste yards for disposal. Ardsley Local Law No. 11-2004 requires separate bagging of all leaves and garden waste and the Village does not permit dumping of unbagged yard waste streetside.

Catch Basin and Storm Drain Maintenance:

There are over 250 catch basins and storm drains in the Village of Ardsley. They are vacuumed every other year by a professional service under contract for the Village. In alternate years, they are manually cleaned by the Highway Department. They are repaired and new catch basins are installed as needed by the Highway Department. Westchester County Department of Health adds larvacide to the drains each year to control the spread of West Nile disease.

“No Dumping” decals have been affixed to all storm drains, a task which was accomplished by the efforts of local Scout volunteers and the office of Westchester County Watermaster (Westchester County Planning Department). GIS Mapping of storm drains and catch basins began in 2007 as a volunteer effort by Ardsley High School Environmental Science students. The next phase of GIS Mapping was conducted in summer 2009 as a local Eagle Scout project. Additional GIS Mapping continues to be undertaken by the Stormwater Management Assistant and Stormwater Student Intern. Mapping will continue until all storm drains and catch basins have been located and catalogued. This task will be further facilitated by Sleepy Hollow Mapping Consortium NYSDEC Grant Contract C304394, and completion of mapping is anticipated by December 2012. New drains and basins will be added and non-functioning ones will be delisted as necessary.

Garbage Collection:

Garbage is collected twice weekly in the entire Village. There is an active recycling program and the percent of garbage which is recycled increases every year. First and third Wednesday of the month is commingled glass and plastic; second and fourth Wednesday is newspaper and cardboard. In 2008, Saturday morning drop-off hours were reestablished for residents wishing to bring their recycling items directly to the Highway Department facility. The Village averages 12 tons per month for glass and plastic and 39 tons per month for paper. A trash and recycling collection schedule, which includes rules for collection and dates for Westchester County Household Chemical Waste

Village of Ardsley

NYR20A316

Collection, is mailed to all residents every January. In addition, County Clean-up Day schedules are posted on the Village website and Village Cable Access TV Channel 75 and Verizon Cable Access TV Channels.

Members of the Highway Department also aid the volunteer Village Clean-up efforts by providing trash bags and pick up of all trash collected at the Clean-up events.

Asphalt Use:

Village of Ardsley Highway Department patches roadways during the spring and fall. Complete resurfacing of selected Village streets is done by contracted paving services. Asphalt is not stored at Village facilities, it is only brought in as needed and used immediately.

Road Salt Application:

The majority of Ardsley streets are steep inclines, and thus require salt application in winter months for safety reasons. Village of Ardsley Highway Department applies salt before snowstorms in accordance with the most efficient technique for salt application. Salt is sparingly reapplied during icy conditions throughout the winter season. In 2008, Advanced Storage Technologies was contracted by the Village to design a pole-barn style salt shed. Preliminary approval was obtained from New York State Thruway Authority, which owns Highway Department property that is leased by the Village, to construct the salt shed at a site just south of the facilities building which is also part of the NYSTA parcel. Construction of the salt shed was completed December 2009. NYSTA Occupancy Permit was amended to include the Salt Shed. The entire Village supply of road salt is now housed in the Salt Shed.

Vehicle Maintenance:

Village of Ardsley Highway Department provides all service for Highway, Police and Fire Department vehicle in-house as a cost-saving measure. All motor oil and fluids are properly contained in a storage unit which has appropriate secondary containment. Vehicles are washed and serviced indoors at the Highway garage. Garbage trucks are washed every week. Pick-up trucks and other Highway vehicles are washed every other week. Highway vehicles are serviced every 2 months on average, and Police cars are serviced every 3000 miles. Care is taken to clean up any spills and Highway personnel are trained in correct clean up techniques employing absorbent material.

Landscape Maintenance Methods:

There are approximately 30 acres of parkland in the Village of Ardsley. Parkland includes two major recreational facilities, Ashford Park in the southeast and McDowell Park in the northeast, and several parklets downtown. Village of Ardsley Highway Department collects trash and recycled material, mows lawns, plants annual flowering plants and provides irrigation from a water truck during warm weather. One sprinkler system has been installed at Ashford Park, but it is used sparingly. A contracted landscape maintenance service prunes trees and plants additional annual flowering plants. No herbicide, pesticide or chemical fertilizer is applied to any municipal property. Ardsley School District property, which includes Ardsley High School and Concord Road Elementary School located within the Village boundaries, is strictly maintained using Integrated Pest Management (IPM) techniques and no chemical applications are used on school property.

Education and Training:

There are 10 NYS certified (Westchester County FTC and Office of Emergency Management) Hazmat Technicians in Ardsley Fire Department and 2 in the Highway Department. The Highway Foreman is certified in Hazmat Awareness and also serves as the Village Fireman. Three Fire Department members are certified in Hazmat Operations and also

Village of Ardsley**NYR20A316**

serve on the Westchester County Hazmat Response Team. V. Coulehan, Ardsley Fire Department, is second in command of the Response Team. All certified personnel receive training every year for recertification.

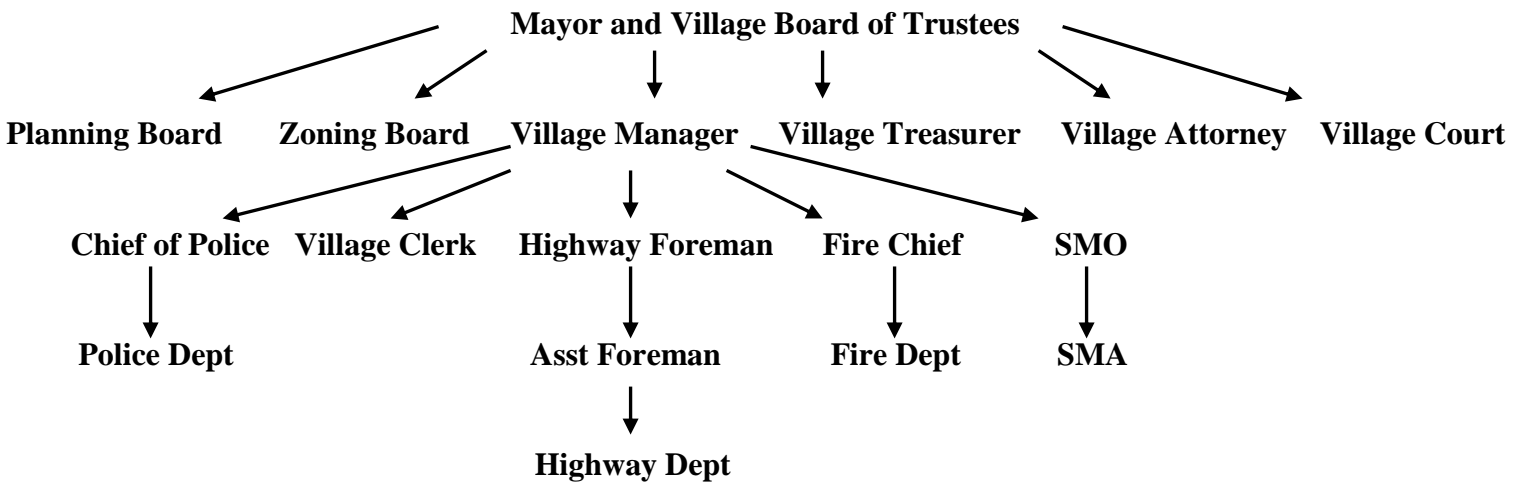
R. Thompson, Highway Foreman, L. Tomasso, Stormwater Management Officer and L. Kuhn, SW Assistant attend several SW training seminars and workshops each year. Highway Department personnel attend seminars on a rotating basis. In addition, in-house “SW Pollution Prevention BMP Training Program” is conducted and all new employees attend training, as well as review course for other employees. The Best Management Manual is distributed to all members of the Highway Department and a copy is available at the Highway Department Office.

BMP Manual: (see Appendix G)

Stormwater Management Personnel

The Village of Ardsley is governed by an elected Mayor and Board of Trustees. Daily operation of the Village is administered by the Village Manager, Village Clerk and Village Treasurer. Services of a part-time Village Attorney and Village Magistrate are retained. Village Court is in session twice weekly. The Village has a full-time Chief of Police and 19 member Police Force. Highway Department has a full-time Foreman and Assistant Foreman and 12 additional employees. There is a volunteer Fire Department, and some members are also Highway Department employees. There is a full-time Building Inspector who is also the Stormwater Management Officer (SMO). There is a part-time Stormwater Management Assistant (SMA) to help with outreach and outfall inspection. The Village does not have a full-time Engineer or Planner. There is an appointed Planning Board, Zoning Board and volunteer Acting Engineer. Professional Engineering and Planning services are contracted as needed.

Personnel Diagram:



Stormwater Management Budget

Phase II Stormwater Management Program is funded as part of the Highway Department budget under “Storm Sewers” Account # 8140. Line Items are as follows:

- .100 Personnel Services** – Skilled Laborer Level III salary
- .101 Overtime** – Overtime Services (flood emergencies) salary
- .110 Part Time** – Stormwater – Stormwater Management Assistant and Student Intern salary
- .133 Longevity** – Maintenance
- .200 Capital Projects** – Stormwater – Funded yearly as needed
- .412 Postage** – Mailing reports, applications and community literature
- .415 Operating Supplies** – Stormwater – Water testing kits, paint, tape, garbage bags, gloves, plants, soil and other items necessary for activities associated with Phase II SW Management
- .455 Printing** – Stormwater – Printing reports, applications and community literature
- .460 Contractual Services** – Expenses incurred in retaining a special vacuum cleaner for storm sewers
- .483 Storm Sewer Maintenance** – Expenses for equipment and disposal service
- .485 Training** – SW Courses and seminars for Village personnel

Budgets 2007 – 2011:

DEPARTMENT: **STORM SEWERS** ACCOUNT #: **8140**

LINE ITEM	ACTUAL 2007-08	ACTUAL 2008-09	BUDGET 2009-10	AMENDED BUDGET 2009-10	ACTUAL 2009-10 3/4/2010	PROJECTED 2009-10	BUDGET REQUEST 2010-11	MANAGER PROPOSAL 2010-11	FINAL BUDGET 2010-11
.100 Personnel Services	57,618	59,925	62,322	62,322	43,369	62,322	64,503	64,503	64,503
.101 Overtime	11,649	9,421	5,000	5,000	7,349	9,799	5,000	5,000	0
.110 Part Time - Stormwater	3,575	7,871	9,000	9,000	8,690	9,000	10,750	10,750	10,750
.133 Longevity	925	925	925	925	925	925	925	925	925
.412 Postage	0	74	50	50	0	50	50	50	50
.415 Op. Supplies - Stormwater	0	334	350	350	9	100	350	350	350
.455 Printing - Stormwater	134	155	100	100	122	122	50	50	50
.460 Contract. Services	0	3,600	3,600	3,600	0	0	3,600	3,600	0
.483 Storm Sewer Maintenance	5,820	10,476	3,000	3,000	8,519	8,519	6,000	4,000	4,000
.485 Training	140	275	300	300	180	180	300	300	300
TOTAL	79,861	93,056	84,647	84,647	69,163	91,017	91,528	89,528	80,928

Stormwater Inter-municipal Agreements

Sleepy Hollow NYSDEC Grant Consortium (Outfall Mapping, Staff Education – work completed)

Sleepy Hollow NYSDEC Grant Consortium (Storm Drain Mapping)

Bronx River Coalition (Westchester County Department of Planning)

Saw Mill River Coalition (Groundwork Hudson Valley)

Westchester County Department of Information Technology (GIS Data Sharing)

Westchester County Department of Planning (MM1 & MM2 Implementation – work completed)

Town of Greenburgh Assessor's Department (GIS Data – Transmap project – work completed)

Westchester County Department of Health (Storm Drain marking and larvacide application)

Planned:

Town of Greenburgh Watershed Committee (Greenburgh Nature Center)

Stormwater Websites

Phase II Stormwater Management:

<http://www.epa.gov/npdes>

<http://www.dec.ny.gov/chemical/8468.html>

<http://www.westchestergov.com/stormwater>

<http://www.sawmillrivercoalition.org>

<http://www.ardsleyvillage.com/stormwater.html>

NYS SW Management Design Manual:

<http://www.dec.ny.gov/chemical/29072.html>

NYS Standards and Specifications for Erosion and Sedimentation Control:

<http://www.dec.ny.gov/chemical/29066.html>

Instruction Manual for Stormwater Construction Permit:

<http://www.dec.ny.gov/chemical/29078.html>