

Bicentennial Park Walkway Planting ...and... "Recycle Your Recycling Bin" Event



Bicentennial Park is owned by New York City Department of Environmental Protection (NYCDEP). It is leased by the Village of Ardsley for use as parkland.

The Croton Aqueduct runs north to south under **Ardsley Library**.

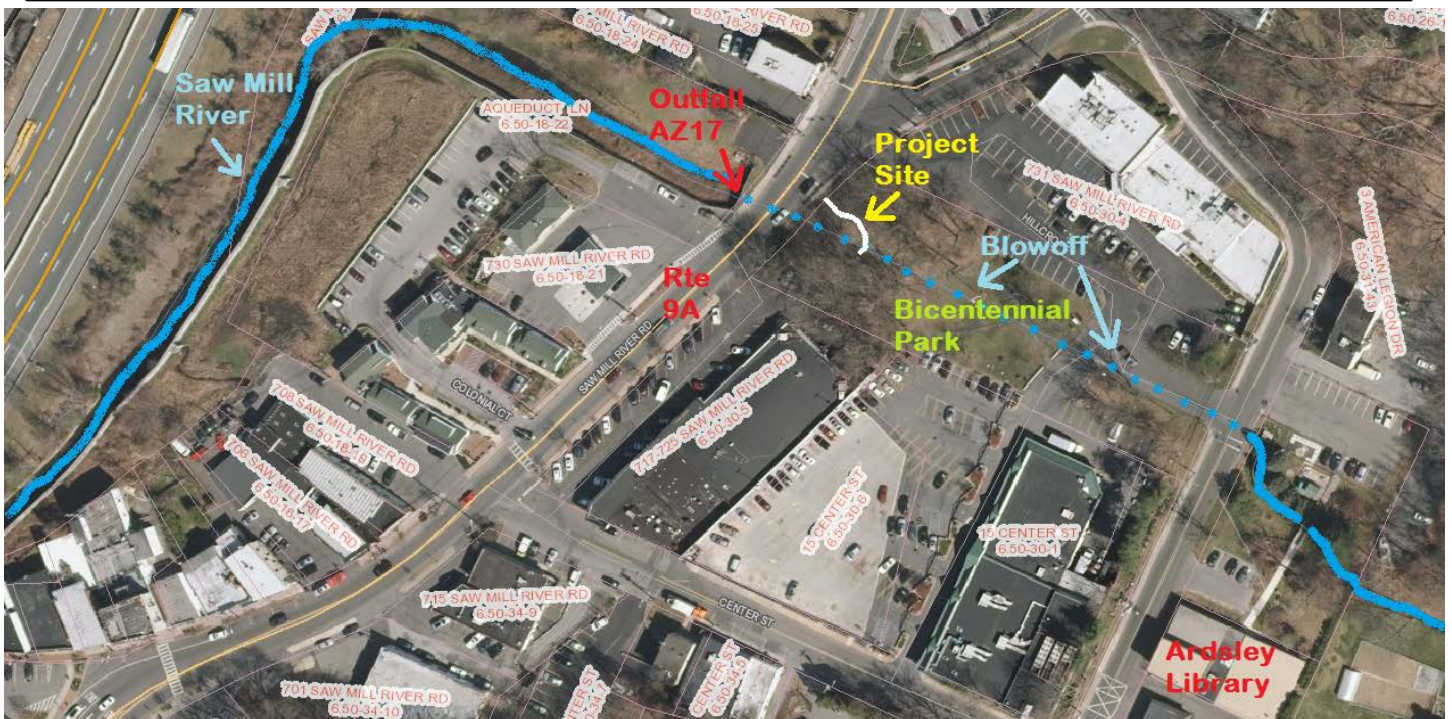
NYCDEP Aqueduct **Blowoff** runs from east to west, under the Park to Route 9A.

The **Blowoff** outlets at the **Outfall AZ17** pipe.

Runoff continues west and south to the Saw Mill River.



**Outfall
AZ17**



Project Site:
The Walkway connecting the upper and lower park was designed to have planting beds. NYCDEP specified that plants must be native non-invasive species.



November 2015:

Larry Nardecchia Jr., P.E. (Walkway designer), Melvin Ward Johns (AHS 2015 SW Extern) and L J Kuhn (VofA SW Management) worked to install 26 garden beds along the Walkway. The base was 4" gravel for drainage. Red bricks were placed to create the beds terraced up the hillside. Top soil was added to a depth of 4".



May 2016:

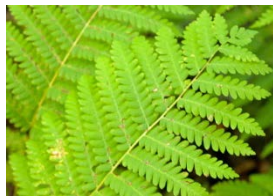
Dan Barnett (AHS Teacher and Env Sci Club Advisor) and members of the AHS Env Sci Club planted a selection of native non-invasive plants in the beds. Three species of ferns and Spiderwort were chosen for the shady areas. New England Asters were planted at the top and bottom beds. Students added a 2" layer of mulch following planting.



Virginia Spiderwort
(*Tradescantia virginiana*)



New England Aster
(*Symphyotrichum novae-angliae*)



Interrupted Fern
(*Osmunda claytoniana*)



Ostrich Fern
(*Matteuccia pensylvanica*)



Christmas Fern
(*Polystichum acrostichoides*)



Information about the benefits of native plants was distributed at the planting activity. A “Recycle Your Recycling Bin” event was held concurrently at the Project Site. Old recycling bins were collected, and new replacement bins were available.



Trustee Kaboolian stopped by.



October 2016:
Daffodil bulbs were planted in the beds. Daffodils will bloom in spring 2017. Beds will be monitored for reemergence of perennial ferns, spiderwort, and asters.

VofA Stormwater Management

thanks -

Larry Nardecchia Jr, PE

Melvin Ward Johns

Dan Barnett

AHS Env Sci Club members:

Ariane Gottlieb

Brian Evans, SW Intern

Shannon Hurley, SW Intern

Carolyn Fon

Fiona Matsen

Dhamar Blanco

Selma Martinez

Daniel Bareth

