

Girl Scout Gold Award Project Heatherdell Traffic Island Sustainable Native Plant Garden

Francine Klarsfeld / Girl Scout Gold Award Recipient
& Girl Scout Troop 1680 & Families

V of A Environmental Task Force (ETF)

Tr. Gary Malone / Chairperson

Eti Katoni, Bernie Preisser & Lorraine Kuhn

V of A Department of Public Works

Richard Thompson/Foreman & Patrick Lindsay/Assistant Foreman



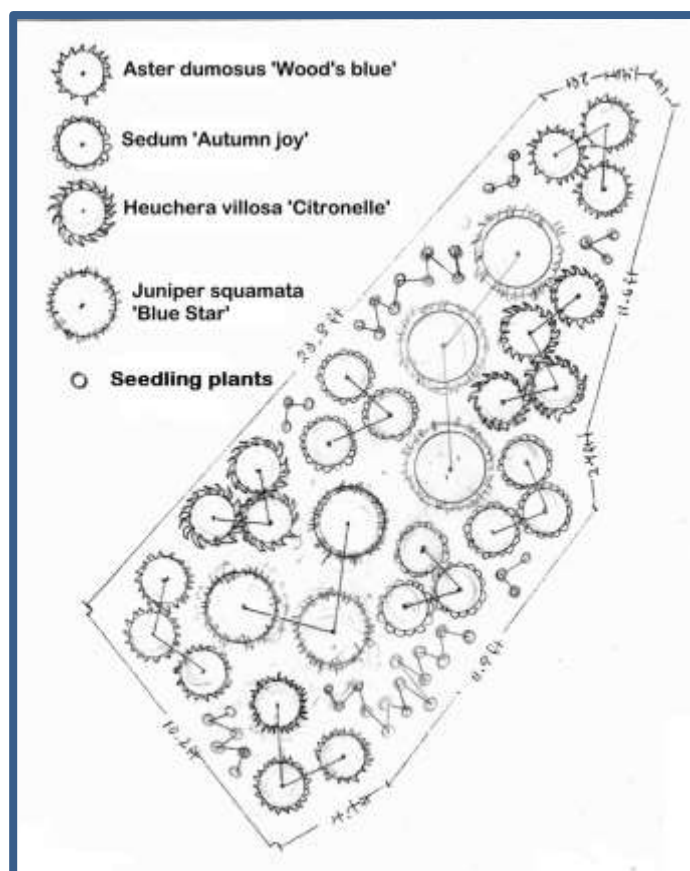
Sustainable gardening involves the use of native plant species which are well suited to their planting site. This is an effective Stormwater Management technique. Native plants require little or no pesticide, herbicide or watering, thus conserving water and contributing little or no pollution to stormwater runoff.



A 184 sq ft traffic island on Heatherdell Rd was chosen as a demonstration site. Belgian block was built up around the perimeter to create a garden bed. Ardsley DPW brought in soil and Village compost. Soil samples were sent to Cornell Coop Ext/Rutgers Univ for testing. Soil was amended with Espoma Soil Acidifier.

A planting design was developed in conjunction with ETF members.

Girl Scouts planted seed trays with native plants in March 2013. They grew the seedlings at home through early spring until they were ready for planting. Hardy species included Verbena (purple), Columbine (McKana's Giants) and Butterfly Weed (Asclepias tuberosa).



Perennials were purchased & planted 5/7/2013. Seedlings were planted 5/9/2013.

- Aster
- Sedum
- Heuchera
- Juniper



- Verbena
- Columbine
- Butterfly weed



Garden was successful throughout spring, summer & fall.



Daffodil bulbs were planted in October 2013.



Blossoming April 2014

Garden continues to flourish, planted species returning through spring & summer 2014.



Creeping Verbena variety added spring 2014. Little weeding or watering has been required. The garden will continue to be monitored for performance, and will be used as a model for other municipal plantings.

Thank you Fran Klarsfeld, Ashley Bernhardt, Emily Corwin, Allie Fischgrund, Laurie Goldstein, Mary Goldstein, Rachel Katz, Elka Klarsfeld, Jenny Oberlander, Priyanka Patel, Maryanne Reda & Stephanie Reda !!!

