

THE VILLAGE

of

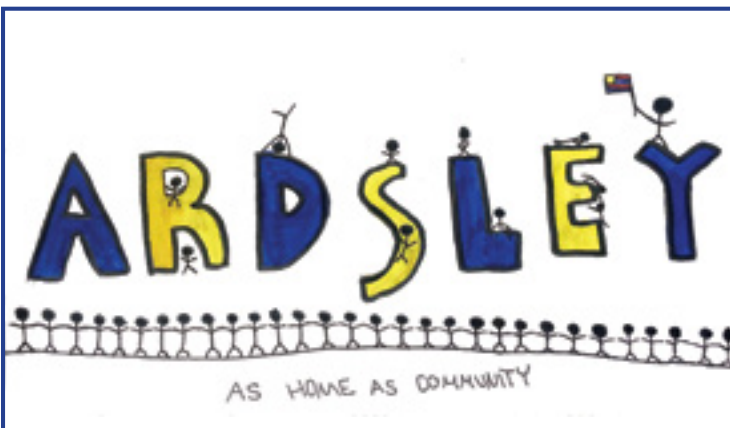
ARDSLEY



Veer Juthani



Annabelle Park

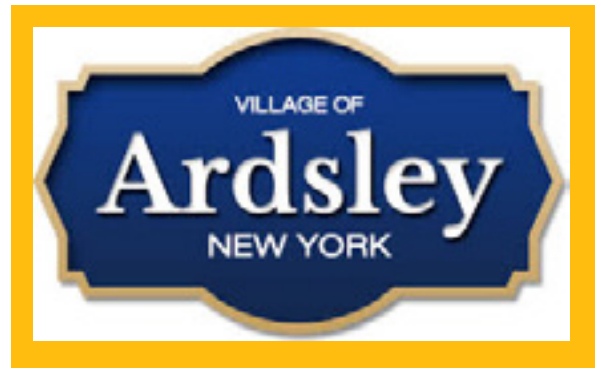


Hannah Philips & Madilyn Fleisher



Luke Farberman

Welcome



On behalf of the Mayor, the Board of Trustees and the entire staff of the Village of Ardsley – welcome! Ardsley is a vibrant suburb of New York City. It has great schools, convenient shopping, a variety of restaurants, an interesting history and a supportive community. We hope you are enjoying getting to know your new home town. As you do, you will see why Ardsley is such a terrific place to live, work and raise a family.

To help get you started, we would like to provide you with this summary of important information about your Village.

A QUICK NOTE ABOUT LOCAL GOVERNMENT

First, what exactly is the Village of Ardsley? Ardsley is an incorporated village within the Town of Greenburgh (<http://www.greenburghny.com/>), in Westchester County. It is approximately 1.3 square miles with a population of 4,634 (2016). [Other villages in Greenburgh include Dobbs Ferry, Elmsford, Hastings-on Hudson, Irvington and Tarrytown]

Most of your municipal services are provided by the Village – police, sanitation, and public works, for example.

The Ardsley School District (<https://www.ardsleyschools.org/>) has its own elected board and leadership and is not part of the Village government. The School District’s boundaries extend beyond the borders of the Village, and it includes students from the surrounding town and villages.

There are state roads (Route 9A) and county roads (the Ashford Avenue Bridge) that run through the Village which those governments control and have the responsibility to maintain.

This overlapping of jurisdictions and responsibilities can be confusing and make it hard to know who to call about problems or issues. Feel free to reach out to the Village with any question. If it is not a matter of village control, we’ll be happy to direct you to the right office. The number for Village Hall is 914-693-1550.

Many village services rely completely on volunteers – the Fire Department and the Ardsley Secor Volunteer Ambulance Corps, for example. In addition, there are village boards and committees that are also made up of volunteers, such as the Rec Commission and the Planning Board (*For a full list, see Village Advisory Boards and Committees*). These are great opportunities to get involved and contribute to our community while giving you the chance to meet other residents. We hope you will learn more about these volunteer opportunities and join us!

A BRIEF HISTORY OF ARDSLEY



The Village of Ardsley has a long and rich history. The area that includes the Village was originally inhabited by the Weckqueskecks, a branch of the Mohican tribe of the Algonquin nation. Ashford Avenue was a major trail between the Hudson River and the Long Island Sound. By the late 1600's, the land became part of Frederick Philipse Manor, a 52,000 acre estate encompassing most of lower Westchester County. In 1751, Frederick Philipse III inherited Philipse Manor from his father. Like the rest of his family, Philipse was a British Loyalist during the American Revolution. After the Revolution, the land was confiscated by New York State and sold mostly to former tenants who had supported the Patriot cause.

The Village, then called Ashford, started to grow. There was a sawmill and grist mill on the Sawmill River, a blacksmith shop, and by the time of the Civil War, three pickle factories. In the early 1880s the Putnam Railroad was built, and the New Croton Aqueduct was constructed. Many village lots were sold and developed, electric lights were installed and roads were improved. In 1883, since there already was an Ashford Post Office in New York State, the village name was changed to Ardsley.

The Village was incorporated in 1896. A fire in 1914 destroyed the village center. This led to the reconstruction of several buildings and the establishment of a fire department. After World War I until the Great Depression, Ardsley saw great growth. Another surge after World War II led to the building of Concord Road Elementary School in 1952, Ardsley High School in 1958, and Ardsley Middle School in 1967. Until these schools were built, all students had been in the same building – which still stands at the intersection of Ashford Avenue and American Legion Drive and is now the Ashford Court condominium!

The construction of the New York State Thruway in the late 1950s, changed the Village dramatically. Much of the downtown business district was lost, as was the Ardsley station on the Putnam Division of the New York Central Railroad. The picture above is the Village before the Thruway cut it in half. Check out the Ardsley Historical Society [<http://www.ardsleyhistoricalsociety.org/>] to learn more about your new home.

MAYOR and BOARD OF TRUSTEES

Legislative and policy-making powers are vested in the Mayor and Board of Trustees. The Mayor is the chief elected official of the Village and presides at meetings of the Trustees.

The Mayor and four Trustees are elected to two-year terms. The terms of office are staggered so that the Mayor and two Trustees are elected in odd years and two other Trustees are elected in even years. Village elections are held in November.

The Board meets at Village Hall at 8:00 P.M. on the first and third Monday of each month, except during the months of July and August when they meet only on the first Monday.

All Board meetings are open to the public (except for executive sessions). We encourage residents to attend board meetings or watch them on Cablevision channel 76 or Verizon Fios channel 41.

VILLAGE HALL

507 Ashford Avenue
Ardsley, New York 10502
914-693-1550
www.ardsleyvillage.com

VILLAGE MANAGER

The Village Manager is responsible for coordinating the day to day operations of the Village and reports directly to the Board of Trustees. The Village Manager is also responsible for implementing the policies of the Board and serves as the Budget Officer. The Village Manager is appointed by the Mayor, subject to the approval of the Board of Trustees.

JOSEPH CERRETANI
Village Manager
jcerretani@ardsleyvillage.com



VILLAGE CLERK

The Village Clerk maintains all village records, papers, books and communications, as well as the reports and communications of the Board of Trustees.

ANN MARIE ROCCO
Village Clerk
arocco@ardsleyvillage.com

VILLAGE TREASURER and VILLAGE TAXES

The Village Treasurer manages the billing and collection of Village taxes based on home assessment provided by the Town of Greenburgh.

Village taxes are due twice a year:
◆ 1st half taxes are due by June 30 without penalty
◆ 2nd half taxes are due by December 31 without penalty

The Treasurer's Office also handles all employee payroll records, accounts payable, accounts receivables and Human Resources and purchases.

For questions about village taxes, contact the Village Treasurer. For more information about home assessment, go to <https://greenburghny.com/168/Assessors-Office> or contact the Assessor's Office at 914-989-1529.

LESLIE TILLOTSON
Village Treasurer
ltillotson@ardsleyvillage.com

BUILDING DEPARTMENT

The Building Department administers and enforces the applicable federal, state and local regulations pertaining to land use and the construction, renovation and alteration of buildings in the village. It processes applications, reviews plans for code compliance, issues permits, inspects work in progress to verify code compliance, and investigates complaints pertaining to building construction, zoning, property maintenance and various quality of life issues.

The Building Department also accepts and processes applications for Village Board Site Plan Approval and for the Planning Board, Zoning Board of Appeals and the Board of Architectural Review.

LARRY TOMASSO

Building Inspector

ltomasso@ardsleyvillage.com

DEPARTMENT of PUBLIC WORKS

The Department of Public Works maintains streets, sidewalks, street lights and signs, storm and sanitary sewers, as well as parks, the Community Center and Village Hall. They are also responsible for snow removal, tree removal (from public property) and the collection of refuse, recycling and organics.

The Village provides curbside pick-up of garbage, recycling (paper, cardboard, comingled glass and plastic), lawn debris, and bulk items. Garbage must be placed in a garbage can with a secure lid. When purchasing new garbage cans, DPW recommends a capacity of no more than 32 gallons. Whatever size can you have, please do not overfill – there is a 50 pound limit per can.

Food scraps can be dropped off for composting by the Town of Greenburgh at Anthony F. Veteran Park. Food scrap containers and liners are available for purchase at the Greenburgh Nature Center in Scarsdale.

The Village establishes a sanitation schedule each year. The schedule is available on the Village website but a printed copy can also be obtained at Village Hall. The schedule details when and what will be picked up by our Public Works department. Garbage and recycling information and a downloadable calendar are also available through the ReCollect app offered in partnership with Sustainable Westchester. Go to <https://www.ardsleyvillage.com/public-works>

DAVID DIGREGORIO

Foreman

ddigregorio@ardsleyvillage.com

ARDSLEY PARKS and RECREATION DEPARTMENT

The Ardsley Recreation Department provides a variety of recreation and sports programs for all residents and students in the Ardsley School District.

The Rec Department manages the Ardsley Community Center on Center Street and oversees the recreational facilities at Pascone and McDowell Parks (see Parks below). The Community Center hosts youth activities, senior citizens programs and Village events. It is used to for a variety of classes and welcomes community groups for meetings and other functions. The Community Center is also available to rent for private events.

A complete program brochure is available online at <https://www.ardsleyvillage.com/parks-recreation>. For additional information call the Recreation Department at 914-693-8012.

TRISH LACY

Recreation Supervisor

placy@ardsleyvillage.com

VILLAGE NEWS



You can sign up for all Village email alerts and other community events and notices on the Village website: <http://www.ardsleyvillage.com>.

You can also follow the Village on social media:

FACEBOOK

<https://www.facebook.com/VillageofArdsley>

TWITTER

<https://twitter.com/ardsleyvillage>

INSTAGRAM

<https://www.instagram.com/villageofardsley/>

BURBIO

https://www.burbio.com/states/New-York/Ardsley?zip_code=10502#content-section

VILLAGE ADVISORY BOARDS and COMMITTEES

The Village has a number of boards and committees to help advise on a variety of issues. Members of these boards are volunteers and are appointed by the Board of Trustees.

THE BOARD OF ARCHITECTURAL REVIEW reviews designs and building materials for exteriors of buildings, signs and other structures erected in the Village to assist in the preservation and enhancement of the Village's physical appearance.

THE PLANNING BOARD is an administrative body which ensures compatible land use within the Village. It reviews and analyzes site plans of property owners planning to build a structure, alter the size of an existing structure, or subdivide property. It grants approvals and permits to build, excavate, hook into local sewer lines, cut trees, etc. and special use permits.

THE ZONING BOARD of Appeals is a semi-judicial body which interprets the local zoning ordinance and renders decisions on its meaning. The ZBA has the authority to authorize or deny variances of the zoning ordinance.

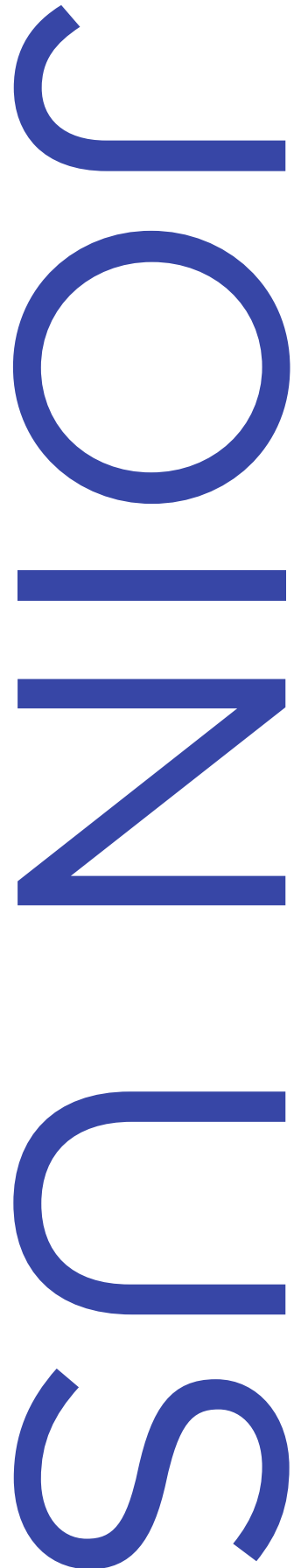
THE RECREATION COMMISSION advises the Board of Trustees on matters related to the regulation and control of Village parks and recreational facilities (including the community center) and assists the Recreation Supervisor with developing recreational programming and activities. The Recreation Commission sponsors a Halloween parade, a holiday tree lighting ceremony and programs for children and adults throughout the year.

MULTICULTURAL, DIVERSITY AND INCLUSION COMMITTEE promotes understanding, acceptance and respect of all residents regardless of race, religion, ethnic background, gender, disability or sexual orientation through cultural celebrations, educational programs and community conversations. For more information, see the committee's Facebook page <https://www.facebook.com/ardsleymdicommitee/> or email multicultural@ardsleyvillage.com.

CONSERVATION & ENVIRONMENTAL ADVISORY COMMITTEE helps to educate and advise the Village of Ardsley -- officials, residents, businesses -- and the Ardsley School District on the effective use of resources so that each may contribute towards a sustainable village environment. You can email the committee at CEAC@ardsleyvillage.com for more information.

TRAFFIC, PARKING, PEDESTRIAN, CYCLING AND SAFETY ADVISORY COMMITTEE (TPPCS) reviews traffic and road issues and presents recommendations to the Board of Trustees on how to make the Village safer and more accessible for all our residents.

THE YOUTH COUNCIL works with the Youth Advocate to provide programs to support our village youth. Currently, the Council sponsors a Homework Helper program, the Middle School Hangout program for students in grades 6-8, and a Red Cross Babysitting certification course.





JUSTICE COURT

The Village Justice Court handles civil cases, with a maximum jurisdiction of \$3,000, small claims with a \$3,000 maximum, criminal cases, vehicle and traffic cases, and violations of village ordinances.

DAVID RIFAS

Village Justice

ANISSA SLADE

Court Clerk

aslade@ardsleyvillage.com

POLICE DEPARTMENT

The Police Department, headquartered in the Municipal Building, is responsible for the preservation of the peace, protection of life and property, enforcement of all laws and arrests of violators, and prevention and detection of crime.

For routine service, questions, or to report an incident that is routine in nature, please use the main number 914-693-1700.

For emergencies always call 911.

To facilitate the effective response of emergency personnel, residents should ensure that their street number is clearly and adequately placed on their homes, so that responders will be able to locate the home quickly in the event of an emergency.

ANTHONY PICCOLINO

Chief

apiccolino@ardsleyvillage.com

FIRE DEPARTMENT

The Ardsley Fire Department was organized on January 25, 1896. The department is an all-volunteer organization, made up of men and women who give freely of their time to protect the lives and property of the residents of the Village of Ardsley and parts of Greenburgh. <http://www.ardsleyfiredepartment.com/>

PJ MURRAY

Chief

firechiefs@ardsleyvillage.com

AMBULANCE CORPS

The Ardsley Secor Volunteer Ambulance Corps (ASVAC), formed in 1960, services the Village of Ardsley and the Ardsley School District, excluding Dobbs Ferry. It is not affiliated with the Village or the Ardsley Fire Department and operates on donations from the people in its coverage area. For non-emergency purposes, you can contact ASVAC at (914) 693-3673. For emergencies, always call 911. <https://www.asvac.org/>





VILLAGE PARKS

The Village has nine parks with over 60 acres of parkland. Six of these parks are smaller parks we call “pocket parks”. The Recreation Department supervises the use of all village parks.

Pascone Park and McDowell Park are our two large parks. Pascone Park has tennis courts, a softball field, a basketball court, soccer fields, a playground, a skate park and picnic areas. It is the scene of concerts and movies in the park, SAYF Coalition 5-K Run, as well as cultural celebrations, food truck events and the annual village-wide Garage Sale. McDowell Park has four baseball diamonds, a basketball court and a picnic pavilion.



The “pocket parks” are: Pocost Park, Silliman Park, Firefighters Park, Legion Park, Bicentennial Park and Floyd Lichtenberg Park.

Ardslay residents may also take advantage of the many Westchester County parks and recreation facilities, including pools and beaches (parks.westchestergov.com/). Macy Park is a county park located within the village boundaries. It has soccer and baseball fields, basketball courts, a playground and picnic areas with charcoal grills, tables and a covered gazebo. It is also one of the few spots in the Village with access to the Saw Mill River.



STORMWATER MANAGEMENT

Ardslay is located within two watershed regions -- on the west side of the Village water drains to the Hudson River via the Saw Mill River, water on the east drains to the Bronx River via the Sprain Brook. Ardsley’s Stormwater Management program helps ensure that water runoff from rain and melting snow doesn’t increase pollution levels in local rivers. It is part of a federal program to clean up all the waterbodies in the US and administered by the state. The program provides public outreach and education; organizes planting and cleanup events; tracks illicit dumping in local water and sewers; controls construction site runoff; ensures permanent runoff capture; and promotes Village best practices for recycling, street sweeping and minimizing road salt. For more information, see <https://www.ardsleyvillage.com/stormwater-project>



ARDSLEY PUBLIC LIBRARY

ANGELA GROTH

Director

9 American Legion Drive

Ardsey, New York 10502

914-693-6636

apl@wlsmail.org

<http://www.ardsleylibrary.org/>

The Ardsley Public Library was established on May 10, 1923. For young and old alike, the Library is a place to explore and learn. The Library lends books, DVDs, and audiobooks and provides books for download for e-readers and mobile devices. It offers everything from public computers, to programs for residents of all ages -- including preschool story time, summer reading programs for students, and adult speakers and events. The Library is a member of the Westchester Library System.

ARDSLEY HISTORICAL SOCIETY

The Ardsley Public Library, 2nd Floor

9 American Legion Drive

Ardsey, New York 10502

914-393-3222

<http://www.ardsleyhistoricalsociety.org/>

The Ardsley Historical Society helps to preserve and make public the history of the Village. The Historical Society hosts programs on several Sundays throughout the year, and the Board meets each month on the 3rd Tuesday at the Ardsley Library Community room. All are welcome.

ARDSLEY GARDEN CLUB

The Ardsley Garden Club meets at St. Barnabas Church (at the corner of Revolutionary Road and Heatherdell). The Garden Club is responsible for the welcome flags around the Village, the Village Clock and many of the plantings that you see each season.

SUPPORTING ARDSLEY YOUTH AND FAMILIES (SAYF) COALITION

The SAYF Coalition works to reduce the use of alcohol, tobacco, and other harmful substances by youth through working with all the sectors in our community. They sponsor a variety of programs throughout the year including community surveys, education, public awareness campaigns, and evidence-based prevention strategies. For more information go to <https://ardsleycoalition.com/about-2/>



ARDSLEY HISTORICAL SOCIETY



SENIORS

Meetings for senior citizens are held weekly at the Community Center. Special programs, such as trips and theater excursions, are scheduled periodically. For additional information call the Recreation Department at 914-693-8012. Transportation is provided for seniors to shopping areas within a six mile radius of Village Hall. Contact the Village Clerk at 914-693-1550 for transportation coupons.

CHILDREN

There is a wide variety of programming for children, through the Village Recreation Department, the Ardsley Library and through Ardsley Schools. In addition, there are Boy and Girl Scout troops, Little League, AYSO youth soccer and other athletic programs through community organizations.

COMMUTING TO NEW YORK CITY & TRANSPORTATION

The closest Metro-North Railroad stations are Dobbs Ferry on the Hudson/Green Line and Scarsdale and Hartsdale on the Harlem/Blue Line. Information about routes and schedules is available on the Metro North website: <https://www.mta.info/mnr>

For information on non-resident station parking permits for the Dobbs Ferry station contact the Ardsley Village Clerk at 914-693-1550. For information on non-resident parking at the Scarsdale station call 914-722-1175.

The Village is served by the Westchester County Bee-Line Bus system, which provides transportation to local railroad stations (Dobbs Ferry, Hartsdale and Scarsdale), Westchester Community College, and throughout the county. Information about routes and schedules is available on the Westchester County website: <https://transportation.westchestergov.com/bee-line/timetables-and-maps>



IMPORTANT TELEPHONE NUMBERS AT A GLANCE

VILLAGE OF ARDSLEY

VILLAGE HALL693-1550

Joseph Cerretani, *Village Manager*..... jcerretani@ardsleyvillage.com
Ann Marie Rocco, *Village Clerk* arocco@ardsleyvillage.com
Leslie Tillotson, *Village Treasurer*..... ltillotson@ardsleyvillage.com
Larry Tomasso, *Building Inspector*..... ltomasso@ardsleyvillage.com

POLICE DEPARTMENT.....693-1700 (non-emergency)

Anthony Piccolino, *Chief* apiccolino@ardsleyvillage.com

FIRE DEPARTMENT693-6581 (non-emergency)

AMBULANCE.....693-3673 (non-emergency)

VILLAGE COURT693-1703

David Rifas, *Village Justice*
Anissa Slade, *Court Clerk*..... aslade@ardsleyvillage.com

PUBLIC WORKS693-0017

David DiGregorio, *Foreman*..... ddigregorio@ardsleyvillage.com

RECREATION DEPARTMENT...693-8012

Trish Lacy, *Recreation Supervisor*..... placy@ardsleyvillage.com

LIBRARY693-6636

apl@wlsmail.org

ARDSLEY SCHOOL DISTRICT

ARDSLEY SCHOOL DISTRICT...295-5500

Ryan Schoenfeld, *Superintendent*
Duncan Wilson, *Assistant Superintendent*

Concord Road Elementary School..... 231-0800	Jennifer Darling, <i>Principal</i>
Ardsley Middle School..... 295-5600	Stuart Horlacher, <i>Principal</i>
Ardsley High School..... 295-5800	Danielle Trippodo, <i>Principal</i>

LOCAL NEWSPAPERS

The Rivertowns Enterprise 478-2787
The Journal News 693-9300

ELECTED REPRESENTATIVES

VILLAGE OF ARDSLEY

NANCY KABOOLIAN

Mayor

nkaboolian@ardsleyvillage.com

ASHA BENCOSME

Village Trustee

abencosme@ardsleyvillage.com

ANDY DIJUSTO

Village Trustee

adijusto@ardsleyvillage.com

STEVE EDELSTEIN

Village Trustee

sedelstein@ardsleyvillage.com

CRAIG WEITZ

Village Trustee

cweitz@ardsleyvillage.com

TOWN OF GREENBURGH

PAUL FEINER

Supervisor

914-989-1540

pfeiner@greenburghny.com

WESTCHESTER COUNTY

GEORGE LATIMER

County Executive

914-995-2900

ce@westchestergov.com

MARYJANE SHIMSKY

County Legislator

914-995-2821

<http://westchesterlegislators.com/district-12.html>

NEW YORK STATE ASSEMBLY

TOM ABINANTI

914-631-1605

518-455-5753

abinanti@nyassembly.gov

NEW YORK STATE SENATE

ANDREA STEWART COUSINS

914-423-4031

518-455-2585

scousins@nysenate.gov



