



Sleepy Hollow Mapping Consortium
New York State
Department of Environmental Conservation
Contract No. 304394

-H24-

VILLAGE OF ARDSLEY

The organizations that worked together with the municipality to complete this project include:

Westchester County
 New York

Contract Administrator:
 dolph rotfeld engineering, p.c.
 200 White Plains Road, Tarrytown, NY 10591
 (914) 831-8600

Merritts GIS, Ltd.
 394 Bedford Rd.
 Pleasantville NY, 10570
 914-768-8003

BOWNE
 M&E GROUP
 BOWNE MANAGEMENT SYSTEMS, INC.
 235 East Jericho Turnpike
 Mineola, NY, 11501
 800-540-2696

Legend

- Catchbasin
- Drainage manhole
- Other manhole
- Existing outfalls
- Railroad
- Parcels
- Municipal boundary
- Lake
- Stream/river

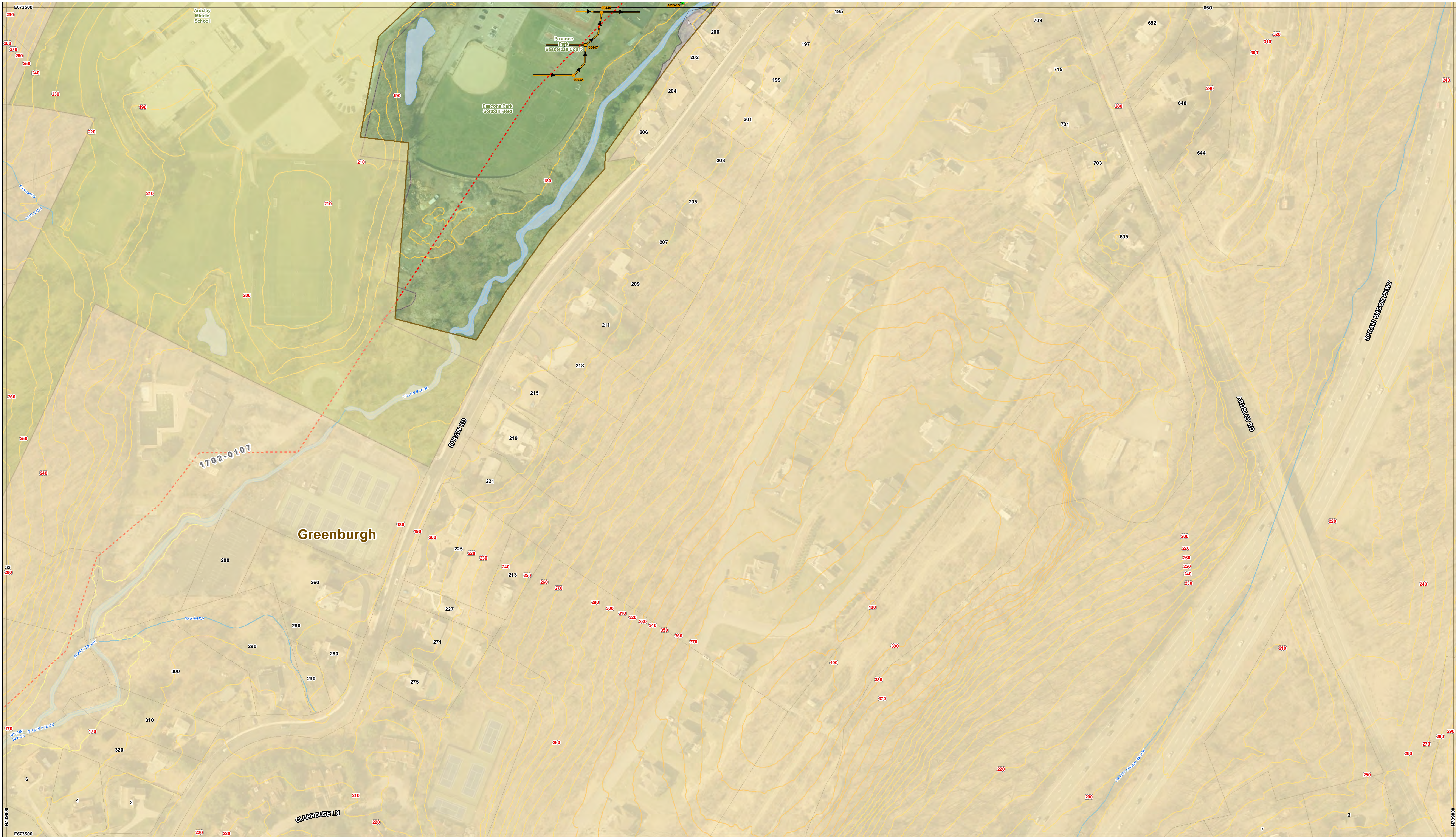
Basemap data provided by: Westchester County GIS, Orthophotography spring 2009

1" = 100'

0 100 200
 Feet

BP12


Print date:
 November 21, 2012




Sleepy Hollow Mapping Consortium
New York State
Department of Environmental Conservation
Contract No. DEC01-C00077GG-3350000

Sleepy Hollow Mapping Consortium

VILLAGE OF ARDSLEY



Westchester County
 New York



Contract Administrator:
Dolph Rotfeld Engineering
 A Division of AI Engineering, Inc., P.C.
 570 Tuxter Road Suite 300, Elmsford, NY 10523
 914-831-8000

LiRo GIS, Inc.
 A LiRo Group Company
 205 East Orange Turnpike
 Marietta, NY 11951
 516-746-2000

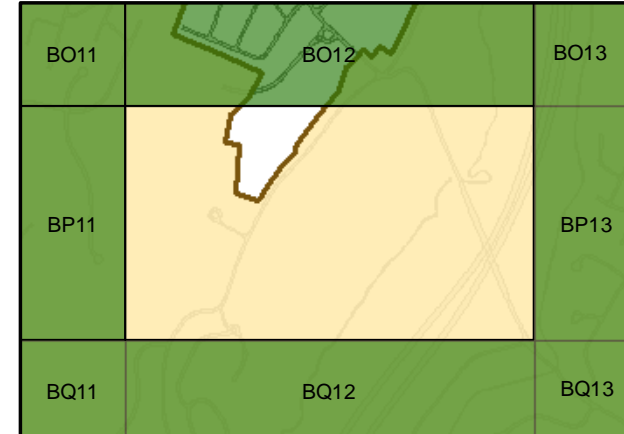
Legend

Catchbasin	Structural BMP	Panels	Priority Waterbody River-Stream
Drainage manhole	IDDE	Other municipal boundary	Impaired Segment
Outfall	Drainage pipes & Flow direction	Municipal lots	Minor Impacts
Outfall / Interconnect	CONTOUR	Natural drainage	Threatened
Inlet Point	0' - 170'	Natural drainage	Needs Verification
Culvert	171' - 320'	Railroad	UnAssessed
Other	321' - 440'		No Known Impact
Open Drain	441' - 570'		Priority Waterbody Lake-Reservoir, Estuary
	571' - 830'		Impaired Segment
	123 Property Number		Minor Impacts
			Threatened
			Needs Verification
			UnAssessed
			No Known Impact

North arrow pointing up.

Scale: 1" = 100'

Scale bar: 0, 50, 100, 200 Feet



Grid ID:
BP12

Date: 1/9/2020

Basemap data provided by: Westchester County GIS, Orthophotography Spring 2018