





Sleepy Hollow Mapping Consortium
New York State
Department of Environmental Conservation
Contract No. 304394

VILLAGE OF ARDSLEY



The organizations that worked together with the municipality to complete this project include:

Westchester County
 New York



Contract Administrator:
 dolph rotfield engineering, p.c.
 200 White Plains Road, Tarrytown, NY 10591
 (914) 831-8600

Merritts GIS, Ltd.
 394 Bedford Rd.
 Pleasantville, NY, 10570
 914-768-8003

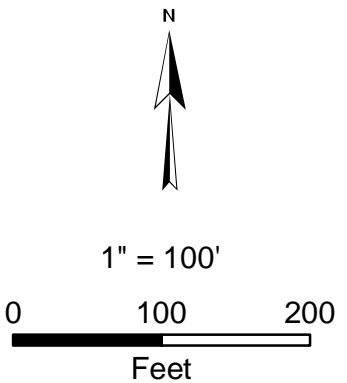
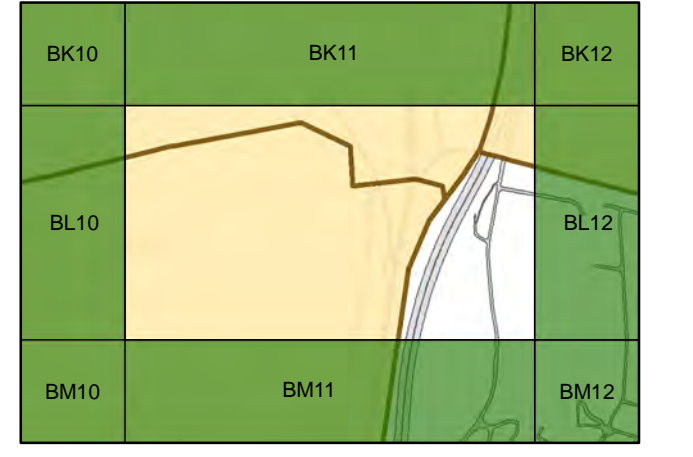
BOWNE
 GROUP
 BOWNE MANAGEMENT SYSTEMS, INC.
 235 East Jericho Turnpike
 Mineola, NY, 11501
 800-540-2696

Legend

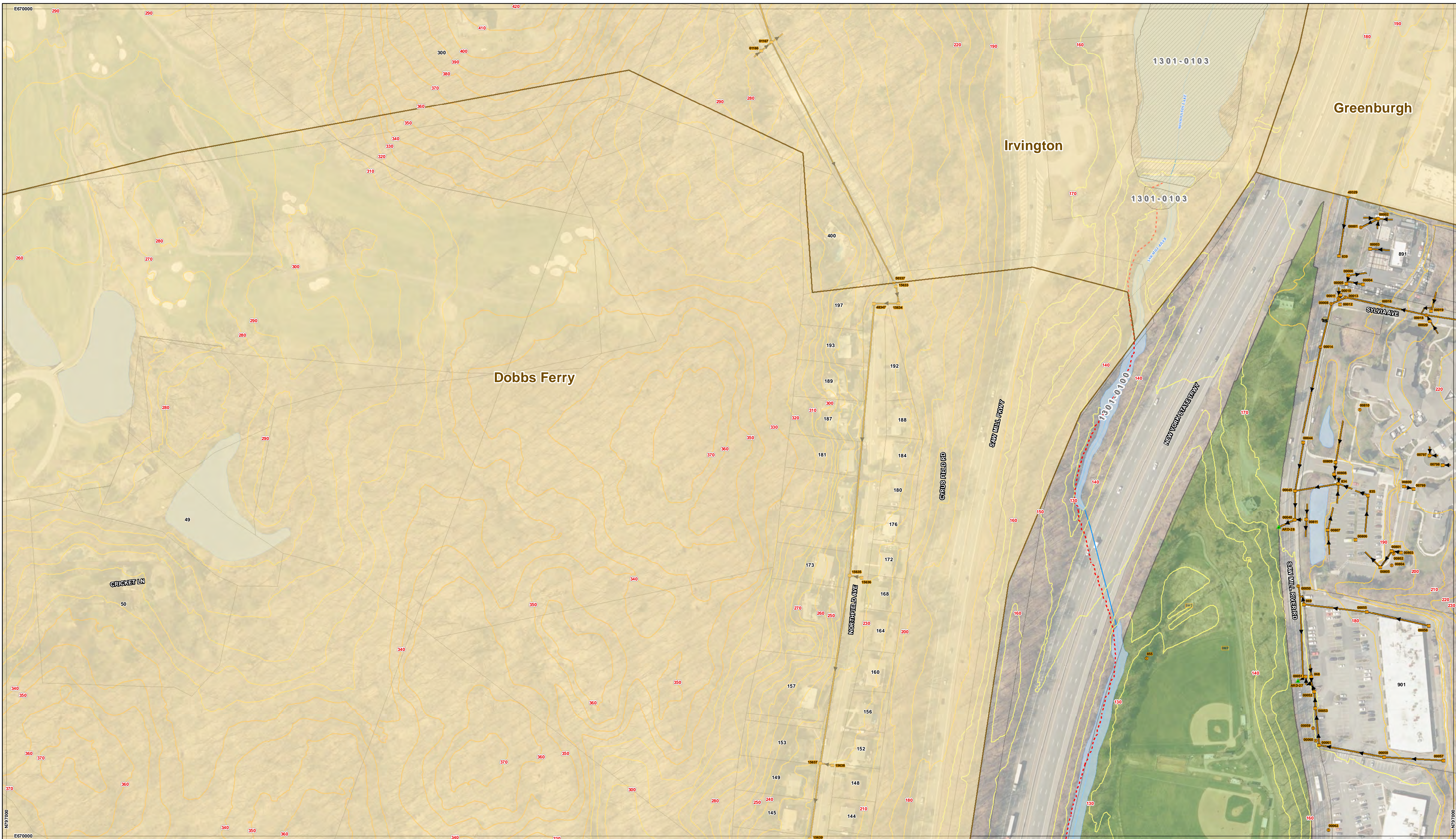
- Catchbasin
- Drainage manhole
- Other manhole
- Existing outfalls
- Railroad
- Parcels
- Municipal boundary
- Lake
- Stream/river

Basemap data provided by: Westchester County GIS, Orthophotography spring 2009

BL11

Print date:
 November 21, 2012



Sleepy Hollow Mapping Consortium
New York State
 Department of Environmental Conservation
 Contract No. DEC01-C00077GG-3350000

Sleepy Hollow Mapping Consortium

VILLAGE OF ARDSLEY

Westchester County
 New York

Contract Administrator:
 Dolph Rotfeld Engineering
 A Division of AI Engineering, Inc., P.C.
 570 Tuxter Road Suite 300, Elmsford, NY 10523
 914-831-8000

LiRo GIS, Inc.
 A LIRC Group Company
 205 East 202nd Street
 Mount Kisco, NY 10541
 914-746-2000

Legend

<ul style="list-style-type: none"> Catchbasin Drainage manhole Outfall Outfall / Interconnect Inlet Point Culvert Other Open Drain 	<ul style="list-style-type: none"> Structural BMP IDDE Drainage pipes & Flow direction CONTOUR 0' - 170' 171' - 320' 321' - 440' 441' - 570' 571' - 830' 123 Property Number 	<ul style="list-style-type: none"> Panels Other municipal boundary Municipal lots Natural drainage Natural drainage Railroad 	<ul style="list-style-type: none"> Priority Waterbody River-Stream Impaired Segment Minor Impacts Threatened Needs Verification UnAssessed No Known Impact Priority Waterbody Lake-Reservoir, Estuary Impaired Segment Minor Impacts Threatened Needs Verification UnAssessed No Known Impact
--	--	--	---

Basemap data provided by: Westchester County GIS, Orthophotography Spring 2018

North arrow pointing up.

Scale: 1" = 100'
 0 50 100 200 Feet

Grid ID: **BL11**

Date: 1/9/2020