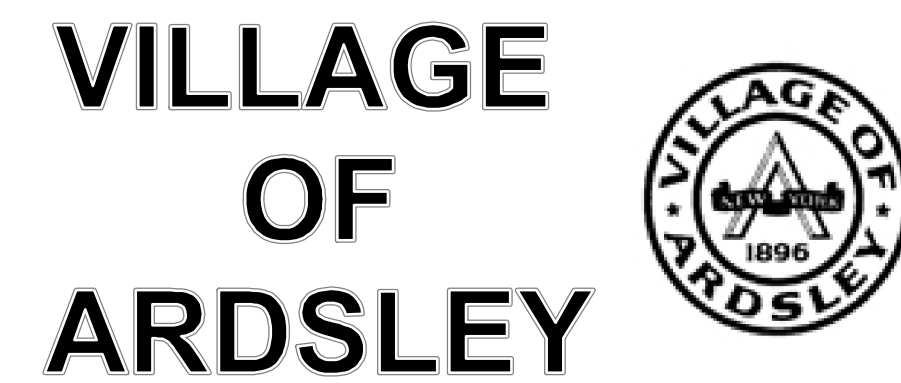
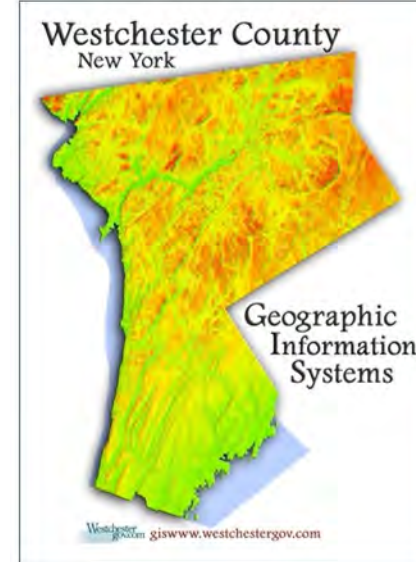




**Sleepy Hollow Mapping Consortium**  
 New York State  
 Department of Environmental Conservation  
 Contract No. 304394



The organizations that worked together with the municipality to complete this project include:



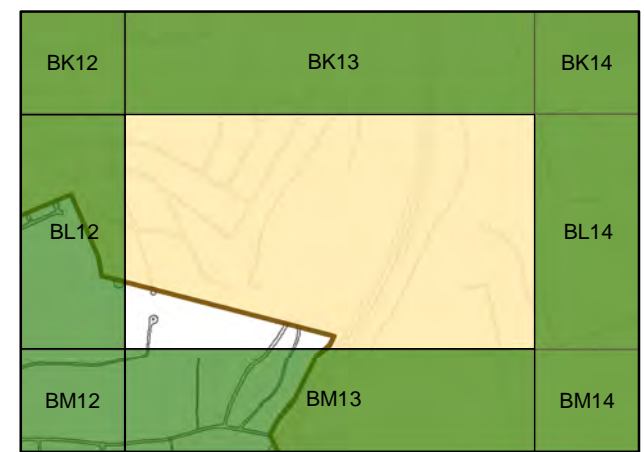
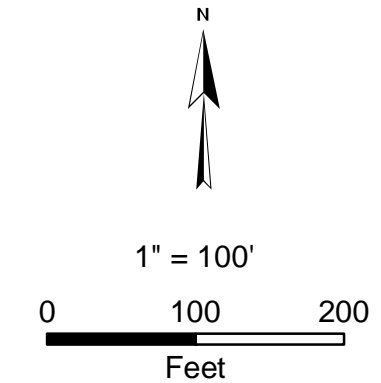
**Contract Administrator:**  
 dolph rotfeld engineering, p.c.  
 200 White Plains Road, Tarrytown, NY 10591  
 (914) 631-8600

**Merritts GIS, Ltd.**  
 394 Bedford Rd.  
 Pleasantville, NY, 10570  
 914-768-8003

**BOWNE**  
 MERRITT GROUP  
 Bowne Management Systems, Inc.  
 235 East Jericho Turnpike  
 Mineola, NY, 11501  
 800-540-2696

**Legend**

- Catchbasin
- Drainage manhole
- Other manhole
- Existing outfalls
- Railroad
- Parcels
- Municipal boundary
- Lake
- Stream/river

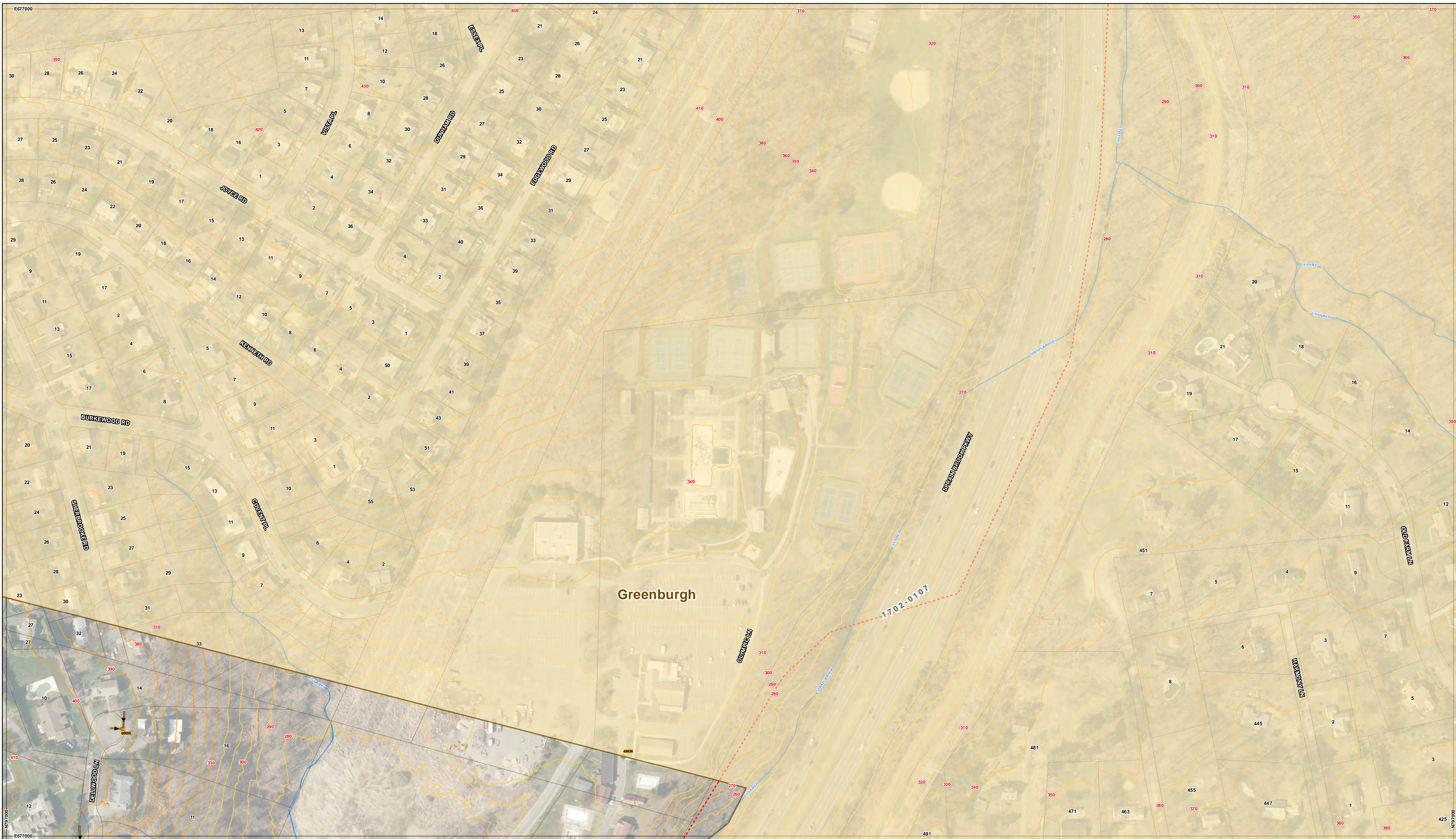


**BL13**

Print date:  
 November 21, 2012

Basemap data provided by: Westchester County GIS, Orthophotography spring 2009






**Sleepy Hollow Mapping Consortium**  
**New York State**  
**Department of Environmental Conservation**  
**Contract No. DEC01-C00077GG-3350000**


**Sleepy Hollow Mapping Consortium**

**VILLAGE OF ARDSLEY**



Westchester County  
 New York

Contract Administrator:  
**Dolph Rotfeld Engineering**  
 A Division of AI Engineering, Inc., P.C.  
 570 Tuxter Road Suite 300, Elmsford, NY 10523  
 914-631-8000



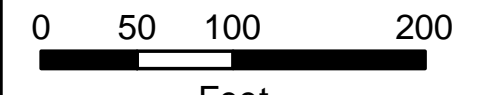
**LiRo GIS, Inc.**  
 A LiRo Group Company  
 205 East 202nd Street  
 Marietta, NY 11951  
 516-746-2300

**Legend**

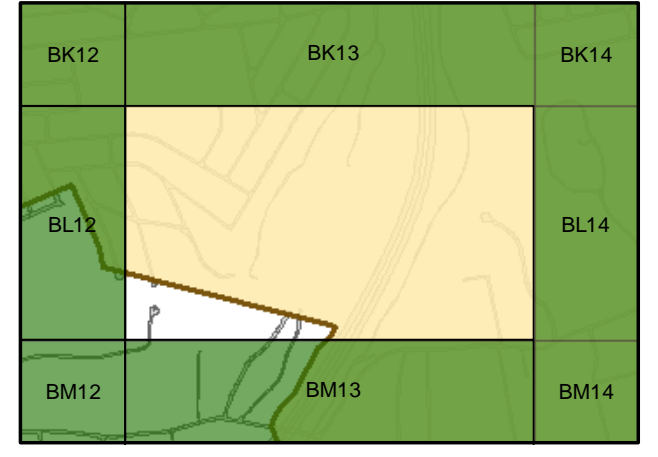
Catchbasin	Structural BMP	Panels	Priority Waterbody River-Stream
Drainage manhole	IDDE	Other municipal boundary	Impaired Segment
Outfall	Drainage pipes & Flow direction	Municipal lots	Minor Impacts
Outfall / Interconnect	CONTOUR	Natural drainage	Threatened
Inlet Point	0' - 170'	Railroad	Needs Verification
Culvert	171' - 320'		UnAssessed
Other	321' - 440'		No Known Impact
Open Drain	441' - 570'		Priority Waterbody Lake-Reservoir, Estuary
	571' - 630'		Impaired Segment
	123 Property Number		Minor Impacts
			Threatened
			Needs Verification
			UnAssessed
			No Known Impact

Basemap data provided by: Westchester County GIS, Orthophotography Spring 2018

1" = 100'



Feet



**Grid ID:**  
**BL13**

Date: 1/9/2020