

Appendix

<u>Item #</u>	<u>Title</u>	<u>Page(s)</u>
1	Mapping Letter	2
2	Saw Mill River Coalition MOA and Resolution	3 - 6
3	Literature Distribution Log	7
4a	Ardsley Villager Stormwater Article 10/2005	8
4b	Ardsley Villager Stormwater Article 12/2005	8
5	Storm Drain Stenciling Map	9
6	“Clean Up Bicentennial Park” Photos	10
7	Spills and Illegal Dumping Log	11
8	Outfall Map of Ardsley (entire Village)	12
8a	Dellwood Heatherdell Outfall Map	13
8b	Ashford Park Cross Rd Outfall Map	14
8c	Markwood Mt View Outfall Map	15
8d	Abington Agnes Circle Outfall Map	16
8e	Bramble Brook Outfall Map	17
8f	Ashford 9a Elm St Outfall Map	18
8g	American Legion King St Park Ave Outfall Map	19
8h	Concord Rd Outfall Map	20
8i	Dellwood Heatherdell Outfall Photos	21 - 25
8j	Ashford Park Outfall Photos	26 - 27
8k	Ashford Ave Cross Rd Outfall Photos	28
8l	Markwood Mountainview Outfall Photos	29 -32
8m	Bramble Brook South Outfall Photos	33 -39
8n	Bramble Brook North Outfall Photos	40 - 42
8o	9A South Saw Mill River Outfall Photos	43 - 45
8p	American Legion King St Outfall Photos	46 - 47
8q	Park Ave Outfall Photos	48 - 50
8r	Concord Rd Outfall Photos	51 - 52
9	Resolution for Catch Basin Location Grant Application	53
10	IDDE Law Summary and IDDE Law	54 - 64
11	Land Use and Regulatory Resources Review	65
12	Stormwater Runoff Issues Log	66
13	Ardsley Department of Public Works Operations Log	67 – 80

Item 1: Mapping Letter

Village of Ardsley



Mayor
SAMUEL J. ABATE, JR.

Trustees
JAY LEON - Deputy Mayor
LARRY J. NARDECCHIA, JR.
MICHAEL J. KOLESAR
GARY J. MALONE

507 Ashford Avenue
Ardsley, New York 10502
(914) 693-1550
Fax (914) 693-3706
www.ardsleyvillage.com

Village Manager
GEORGE F. CALVI

Village Treasurer
MARION DE MAIO

Deputy Village Clerk
Asst. Village Manager
DEBBIE HENNEBERRY

July 29, 2005

Dear Neighbor:

As part of the Phase II Stormwater Management Program, all water bodies, including backyard streams and ponds, and all other stormwater drainage conveyances in the Village of Ardsley must be located and accurately mapped for inclusion into Village GIS (Geographical Information System). Our GIS will be coordinated with town and county systems so that we may better manage our runoff water and ultimately send cleaner water to our local receiving bodies, the Saw Mill River and Sprain Brook and Reservoir.

Please welcome the Village volunteers and student workers who are helping us to accomplish the mapping task. We greatly appreciate your kindness in allowing them to map the water which runs through your property. This task has been mandated by the Federal (Environmental Protection Agency) and State (NYS Department of Environmental Conservation) governments and you are fulfilling your role as a good citizen in helping with the mapping effort.

If you have any questions about the mapping program or Phase II Stormwater Management or if you would like to volunteer to assist with the mapping, please email stormwater@ardsleyvillage.com or call Debbie Henneberry, Assistant Village Manager, at 693-1550.

Thank you very much for your helpful cooperation.

Sincerely yours,
Lorraine Kuhn

Item 2: Saw Mill River Coalition MOA and Resolution

**Memorandum of Agreement
with respect to the
Saw Mill River Watershed**

WHEREAS, the undersigned cooperating municipalities wish to explore mutually beneficial ways of sharing information and resources to improve their relationship with the Saw Mill River (the “River”) and the Saw Mill River Watershed (the “Watershed”), as well as improve the health, ecology, economic and recreation potential of the River itself.

WHEREAS, the undersigned cooperating municipalities share a number of common goals, including flood prevention, storm water management, non-point source pollution remediation and prevention, sustainable land use and open space resource preservation.

WHEREAS, the undersigned cooperating municipalities realize that the River, as a tributary of the Hudson River, links their communities and that, therefore, land use decisions made by any municipality in the Watershed can adversely impact downstream municipalities as well as the habitat for the River’s flora and fauna.

WHEREAS, the undersigned cooperating municipalities believe it is in their joint best interest to cooperate on addressing common issues relating to the River such as, for example:

- flooding;
- storm water management;
- improving water quality;
- increasing public access/recreational opportunities; and
- improving aesthetics and restoring native vegetation.

WHEREAS, the undersigned cooperating municipalities have been requested through the Saw Mill River Coalition to participate in a natural resource watershed management plan for the Watershed, initiated by Westchester County Department of Planning and the US Army Corps of Engineers.

Item 2: Saw Mill River Coalition MOA and Resolution

WHEREAS, the undersigned cooperating municipalities have agreed to work together with the Saw Mill River Coalition on projects to address the aforementioned issues, which projects may include, but are not limited to, the following:

- a. securing and sharing the public and private grants available to address issues pertaining to the River and the Watershed;
- b. providing information and input for the natural resource watershed management plan;
- c. coordinating the efforts of individual municipalities to ensure their compatibility;
- d. addressing federal storm water mandates, including the joint implementation of new technologies and joint training opportunities;
- e. developing educational programs on watershed planning, pollution prevention, and storm water management; and
- f. drafting sample language, which could be incorporated into the land use legislation of the cooperating municipalities, pertaining to development within the Watershed that protects the Watershed corridor's ability to function as necessary to prevent flooding and the degradation of water quality and water habitat.

WHEREAS, the undersigned cooperating municipalities agree, that cooperation pursuant to this Memorandum of Agreement will result in, among other things:

- a. enhanced opportunities when applying for grants to fund mutually beneficial projects in respect of the River and the Watershed; and
- b. a more efficient and cost-effective approach to implementing current and future projects pertaining thereto.

NOW THEREFORE, BE IT RESOLVED:

1. That we, the duly appointed representatives of the undersigned cooperating municipalities hereby voluntarily enter into this MEMORANDUM OF AGREEMENT WITH RESPECT TO THE WATERSHED, and hereby agree to work together to achieve mutually beneficial projects in respect of the Watershed;

2. That the cooperating municipalities will communicate regularly, using the Saw Mill River Coalition as an organizing forum and means of communication, to assess progress made in achieving the projects envisioned hereunder;

3. That the cooperating municipalities hereby agree, that any cooperating municipality shall have the right, at any time, to withdraw from this agreement upon written notice to the other parties hereto; and

4. That this Agreement may be executed in any number of counterparts, each of which shall be deemed an original but all which, when taken together, shall constitute one and the same instrument.

[signatures on following page]

EXECUTED ON BEHALF OF THE COOPERATING MUNICIPALITIES BY THEIR REPRESENTATIVES THERETO DULY AUTHORIZED ON THIS ____ DAY OF _____, 2005:

Item 2: Saw Mill River Coalition MOA and Resolution

FOR THE VILLAGE OF ARDSLEY: _____
Name:
Title:

FOR THE VILLAGE OF
DOBBS FERRY _____
Name:
Title:

FOR THE VILLAGE OF ELMSFORD: _____
Name:
Title:

FOR THE TOWN OF GREENBURGH: _____
Name:
Title:

FOR THE VILLAGE OF
HASTINGS-ON-HUDSON: _____
Name:
Title:

FOR THE VILLAGE OF IRVINGTON _____
Name:
Title:

**Item 2: Saw Mill River Coalition MOA
and Resolution**

FOR THE TOWN OF
MOUNT PLEASANT:

Name:
Title:

FOR THE TOWN OF NEW CASTLE:

Name:
Title:

FOR THE VILLAGE OF
PLEASANTVILLE:

Name:
Title:

FOR THE VILLAGE OF
SLEEPY HOLLOW:

Name:
Title:

FOR THE VILLAGE OF TARRYTOWN:

Name:
Title:

FOR THE CITY OF YONKERS:

Name:
Title:

Item 3: Literature Distribution Log – number of copies taken (3/10/2005-3/10/2006)

LOCATION	-----TITLE-----									
	“After the Storm” (EPA 833 B03002)	“Make Your Home the Solution to Stormwater Pollution” (EPA 833B03003)	“Water Efficient Landscaping” (EPA 832F02002)	“New Requirements for Small Construction Projects” (NYSDEC)	“When It Drains” bookmark (Hudson River Estuary)	“Step by Step” LI Sound Study EPA	“Where Does All the Dirty Water Go?” EPA 832-F-03-008	“Clean Water” USDA/ NYS DEC	“Rain Gardens” J.Marinelli <i>Plants and Garden News</i> <u>19</u> (1) 2004.	“Stormwater Regulations and the Construction Industry” EPA
Village Hall	14	20								
Library	9	10								
Community Center	10	15	3							
Building Inspector				3						3
Ardsley Garden Club			20						20	
Chamber of Commerce	23		3							
Bicentennial Clean-up		4								
“Clean Up Your Backyard”	1	1	1		21	1	1	1		1
Stenciling Groups	19	2			4	2		2		1

Item 4a: Ardsley Village Newsletter 9/2005
4b: Ardsley Village Newsletter 12/2005



Two very special events are planned for the fall.

Musical Interlude: On Sat., Sept. 24 at 3 pm, Trio Vento featuring Ardsley resident Janet Grace will perform at the library.

Broadway Comes to Ardsley: On Sat. Oct. 1 at 7:30 pm and Sun. Oct. 2 at 2 pm, we will sponsor special performances of the mystery (?) PROOF, directed by Ardsley resident Rod Nash.

Make sure to visit us soon while our showcase still features an international collection of handmade boxes from Beverly Levine.

STORMWATER NEWS

"Say, what are all those fish doing on my street?" Residents have begun to notice the new storm drain stencils. An important Phase II Stormwater Management requirement of Ardsley's SPDES (NY State Pollutant Discharge Elimination System) Permit #NVR0A316 is that we mark storm drains in the Village. Stenciling began last fall, thanks to Girl Scout Troop #2247 and Cub Scout Den #16. This spring, Michael Pawlak undertook a large-scale stenciling project in fulfillment of Eagle Scout requirements. He has been working with his group in the northeast section of Ardsley. Some stencils are white, some are blue. Fancy ones may be white on blue. They are only 12" x 20" and only placed in the street or on sidewalks next to storm drains. Other villages have assigned DPW personnel to this task, while others are using expensive metal medallions that must be affixed with glue and bolts. Having volunteers apply stencils saves the Village a great deal of money. Please be appreciative of these Scouts. They are meeting Minimum Measure Goals: Education, Involvement and Enforcement of our federally mandated Stormwater obligation.

Already in progress is another volunteer activity, Outfall Mapping. We are locating, measuring and cataloging all water bodies and outflow pipes in the Village, allowing us to make preliminary notes about water quality. Please welcome volunteers when they check water flowing through your backyard. They will be carrying an official letter for identification. This is strictly a survey activity. We need your

help to map out the whole Village and if you would like to help, call Village Hall at 693-1550 or email stormwater@ardsleyvillage.com

The use of volunteers saves us a tremendous expense. Lastly, while the warm weather is still with us, please take it easy on water use and always drain on to porous or grassy areas when possible. Thanks for making this program a success - Lorraine Kuhn, Stormwater Management Assistant.

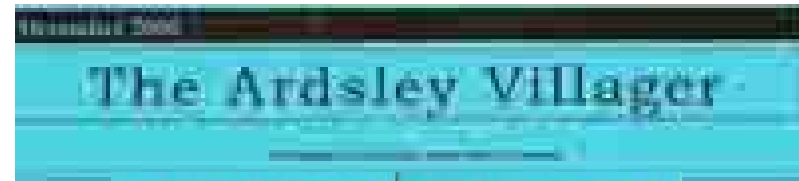
ASVAC NEWS

The Ardsley Secor Volunteer Ambulance Corp. is a completely volunteer organization made up of dedicated friends and neighbors who either live or work in the Village. They respond twenty-four hours a day seven days a week to medical emergencies in our community as well as offering mutual aid to our neighboring communities. In calendar year 2004 they responded to more than 450 medical emergencies.

ASVAC recently installed new line officers: Capt. Pat Hoffman, 1st Lt. Alan Greenwald, and 2nd Lt. Charlie Strick. Please feel free to contact any of the officers or leave a message at the ambulance building (693-3573) should you have any questions or concerns. They are always looking for volunteers. All necessary training and equipment is provided and no prior experience is needed. Please contact any member for information.

ASVAC is continuing their fund drive to replace their 42 year old building located on American Legion Drive. (It is in dire need of replacement). Please consider a tax-deductible donation to provide your volunteers with the quarters and equipment necessary to enable them to protect you. Please remember they receive NO funds from the Village budget. Thanks for your continued support.

SAFETY TIP: Please remember to have your house numbers visible to assist ASVAC in locating you if you require medical assistance. The Village Code requires that such numbers be at least four inches in height in a conspicuous place. Numbers posted on front doors fail the test because they become invisible when the doors are left open awaiting the arrival of an ambulance vehicle. In addition to their listed phone number, you may contact ASVAC them via their



loss of two of our members—Anthony Radomski and Helen Dawson. On a happy note, we have welcomed several new members: Gloria Esposito, Mark Farina, Cocina Gelguy, Carol Green, Robert Phillips, and Eugene Ragone. To end each meeting the men (and a few women) enjoy a couple of hours of cards. Did you know the Village of Ardsley provides free transportation every weekday to the Nutrition Center in Dobbs Ferry? Lunch is served and is often followed with an activity. Please call Evelyn Perry, Director, for any information, 582-4364.

BIBLIOBYTES

Director Angela Groh asks what's big and boxy, protected on all sides and looks like a boiling cage? It is the work area for the NYC DEP which has commenced its work to inspect and maintain the aqueduct that runs beneath the Library. I'm sure you've noticed it if you've tried to park in our lot. We know this was coming. As a matter of fact we were waiting a year for it to begin, but it is still a shock to see the impact it is having here at the Library. We miss you. We have been promised an extension for the parking lot, which will restore the spaces that are now unavailable. The paving should begin shortly and then you will be able to join us again without added discomfort. We are still working feverishly in the Library to provide the newest and best selections of books, audios and DVDs for your enjoyment. For all you fans of books-on-tape, come in and you will find a separate area for the new releases so you can skip the serious browsing to find the new titles (we'll sort them for you!). Make sure to visit us soon while our showcase still features an international collection of handmade boxes from Beverly Levine. I hope to see you here at your Library very soon.

STORMWATER NEWS

According to Mike Ritchie, Delph Roofing Engineering and Project Manager for our NYS DEC SW grants, Ardsley is "way ahead of the curve" in our outfall mapping efforts thanks to Lorraine Kuhn. Hurray for our little Village! Many thanks go to the "West Side Team", Susan Porcino and Gil Hants, and the "East Side Team", Lenny Brandel, for their excellent and dedicated volunteer fieldwork. And

thank you to all the good neighbors who have met and spoken with and have graciously allowed us to map the water which runs through their backyards. This project will continue until Spring 2006 when all the waters have been mapped.

Thanks are also due to our latest Storm Drain Stenciling team which has been busy since September marking drains on the south and east sides of the Village. Josh Marshall has undertaken the task as part of a civic project and she is being ably assisted by Catherine Lowenthal, Jamie Altman and Suzie Furst, as well as by their moms Michèle Masry and Prudence Fisher. These volunteers are doing a great job of raising stormwater awareness. So please remember that only stormwater should go down the storm drains and we should contribute as little pollution as possible to our runoff.

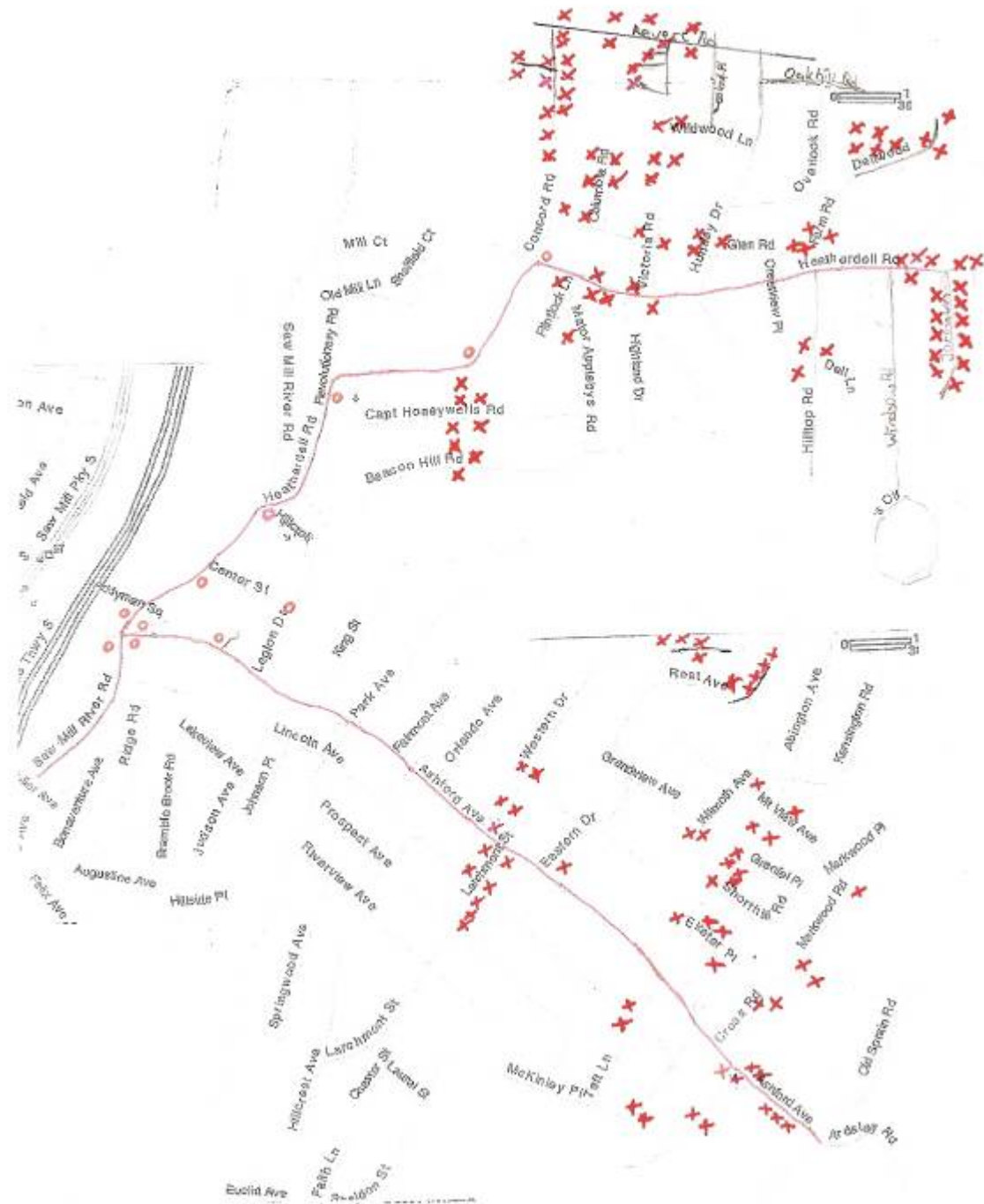
Speaking of controlling our pollution, a new IDDE Law is coming. That's Illicit Discharge Detection and Elimination. Notice was given on November 7 at the Village Board Meeting and a Public Hearing is tentatively scheduled for the second Village Board meeting in December. Copies of the draft law will be available at Village Hall and the Library. Briefly, the IDDE Law regulates illicit discharges to the storm sewer system such as cross connections to the sanitary sewer system and illegal dumping of substances into the storm sewers. Of note to homeowners, floor drains and washing machines should not be draining to the storm sewer and sump pumps should not be draining into the sanitary sewer. Illicit connections will no longer be allowed. The IDDE Law is mandated by the EPA and NYS DEC as part of our Phase II Stormwater Management Program, so we must work to comply with the new regulations.

Lastly, it's fall. Let's bag those leaves and keep them out of the streams. Leaves must be placed in PAPER bags or in garbage pails, uncovered. No plastic leaf bags will be picked up by the DPW. They should be on the street on regular garbage pick up days. Garbage and leaf bags may not be placed on the street until after 6 pm before pick up. Garbage pails should be off the street after pick up within 24 hours according to Village Code.

Item 5 : Storm Drain Stenciling Map

O : Drains stenciled 2004

X : Drains stenciled 2005



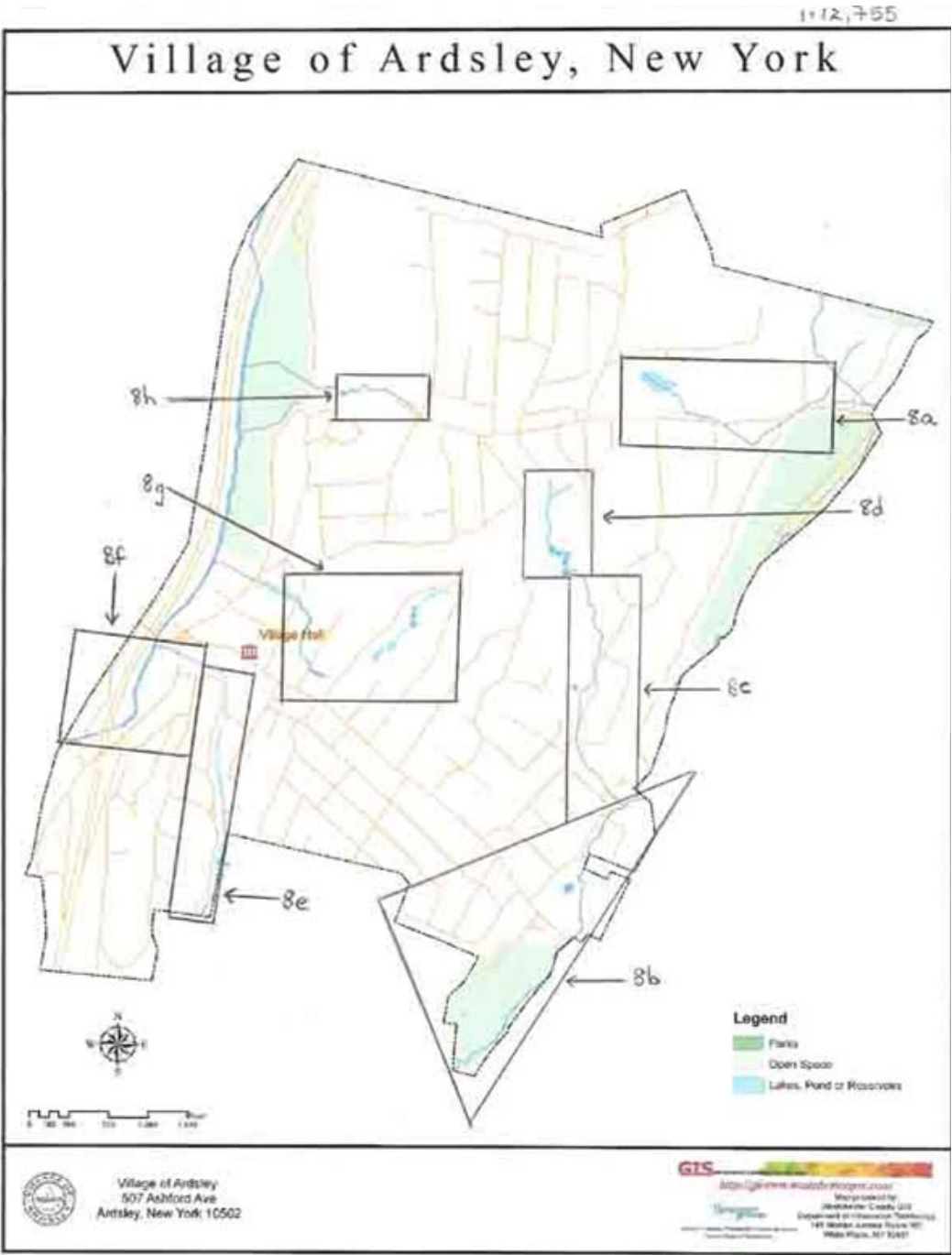
Item 6: Bicentennial Park Clean-up Day 2005



Item 7: Spills and Illegal Dumping

DATE	LOCATION	INCIDENT	REPORT
4/29/2005	DPW Garbage Truck 001-014	Low level radioactive medical waste	Env. Security/West. County Police, WCDOH
5/19/2005	877 Saw Mill River Rd.	Cooking oil spill	Ardsley Police Dept. (case AP-001217-05)
12/17/2005	645 Saw Mill River Rd	Motor oil leak from abandoned vehicle	Ardsley Police Dept. (case AP-003306-05)

Item 8: Outfall Map of Ardsley

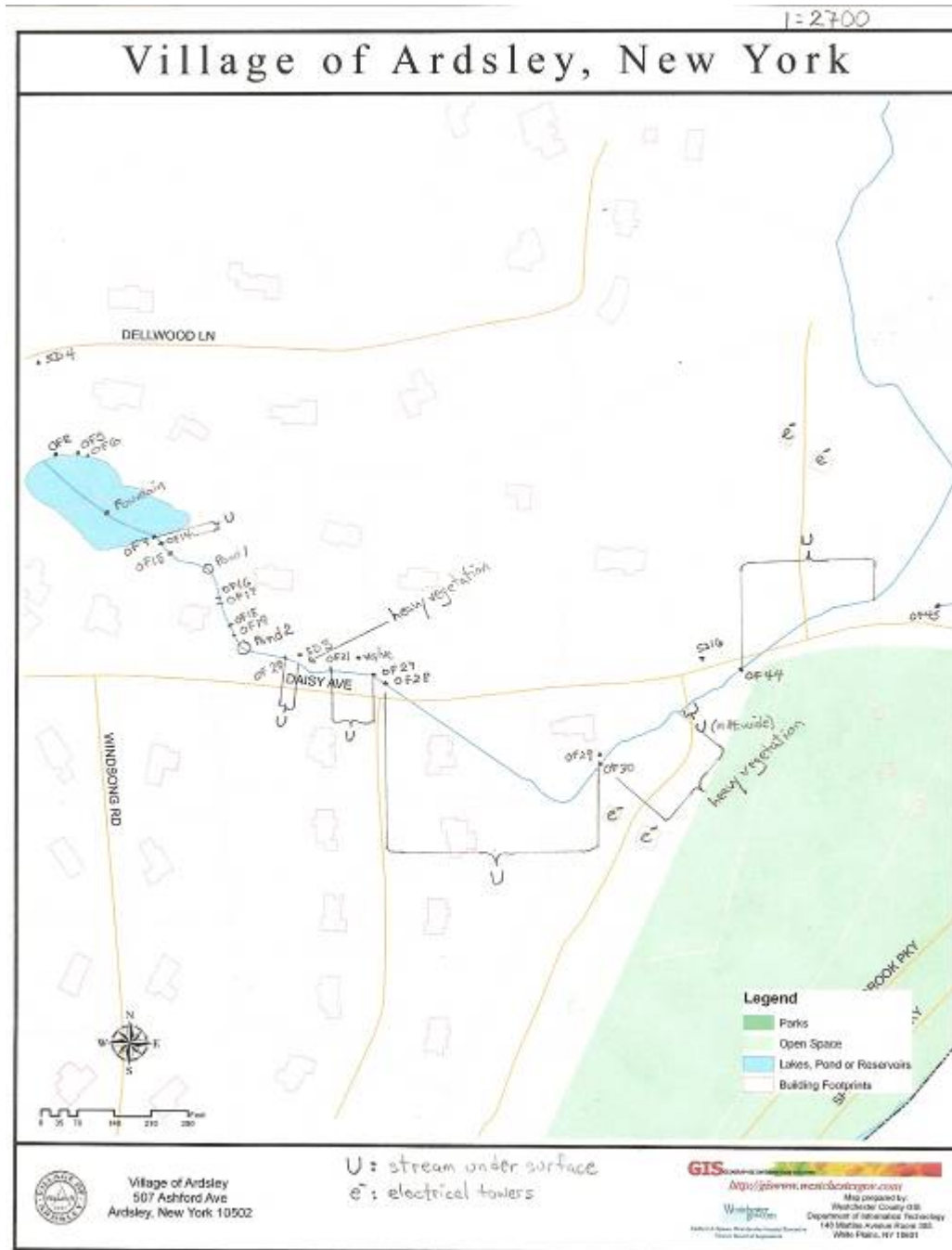


Village of Ardsley
#NYR20A316

Item 8a:

Dellwood Heatherdell
Outfall Map

U = under surface

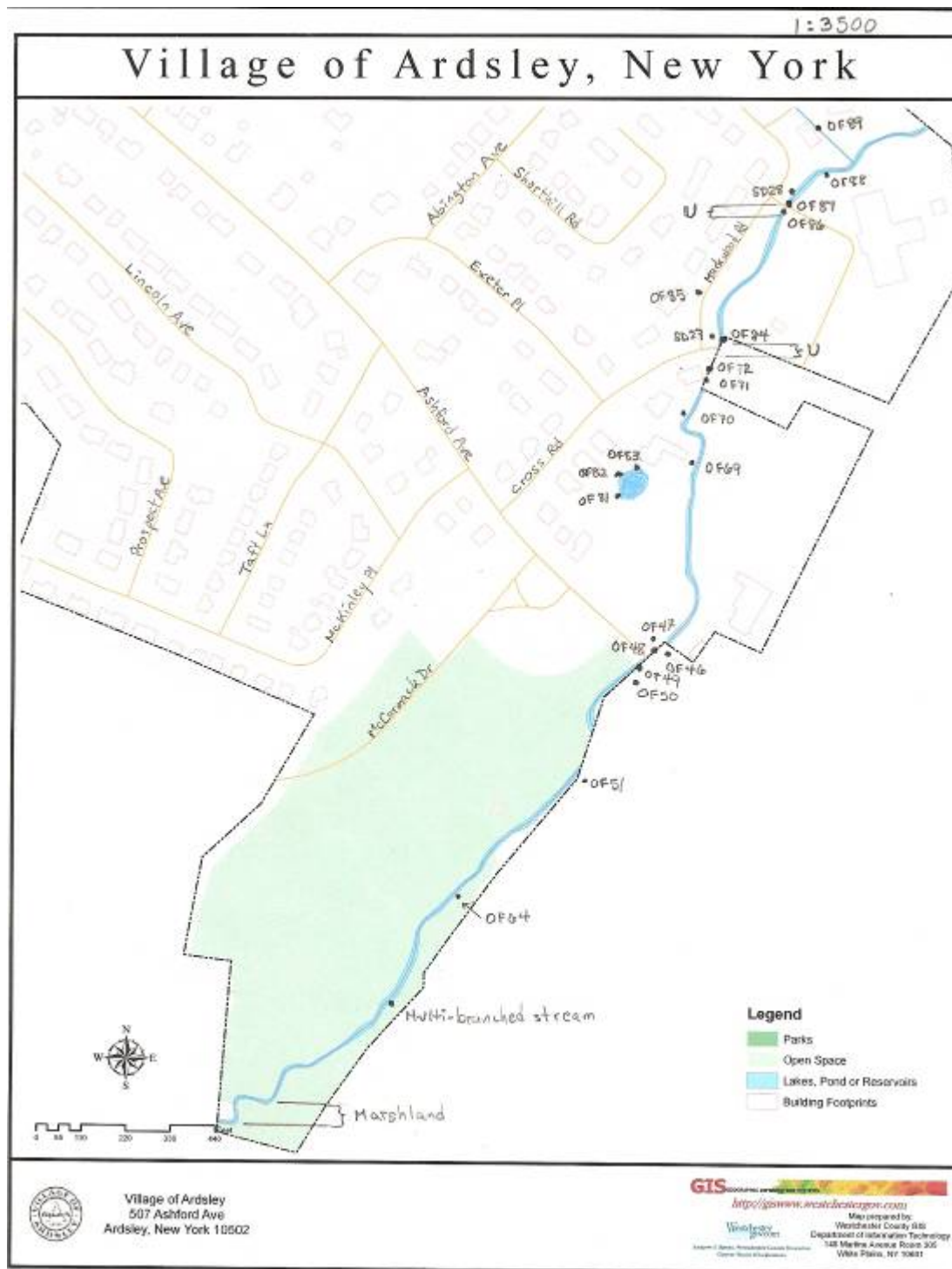


Village of Ardsley
#NYR20A316

Item 8b:

Ashford Park
Cross Rd
Outfall Map

U = under surface

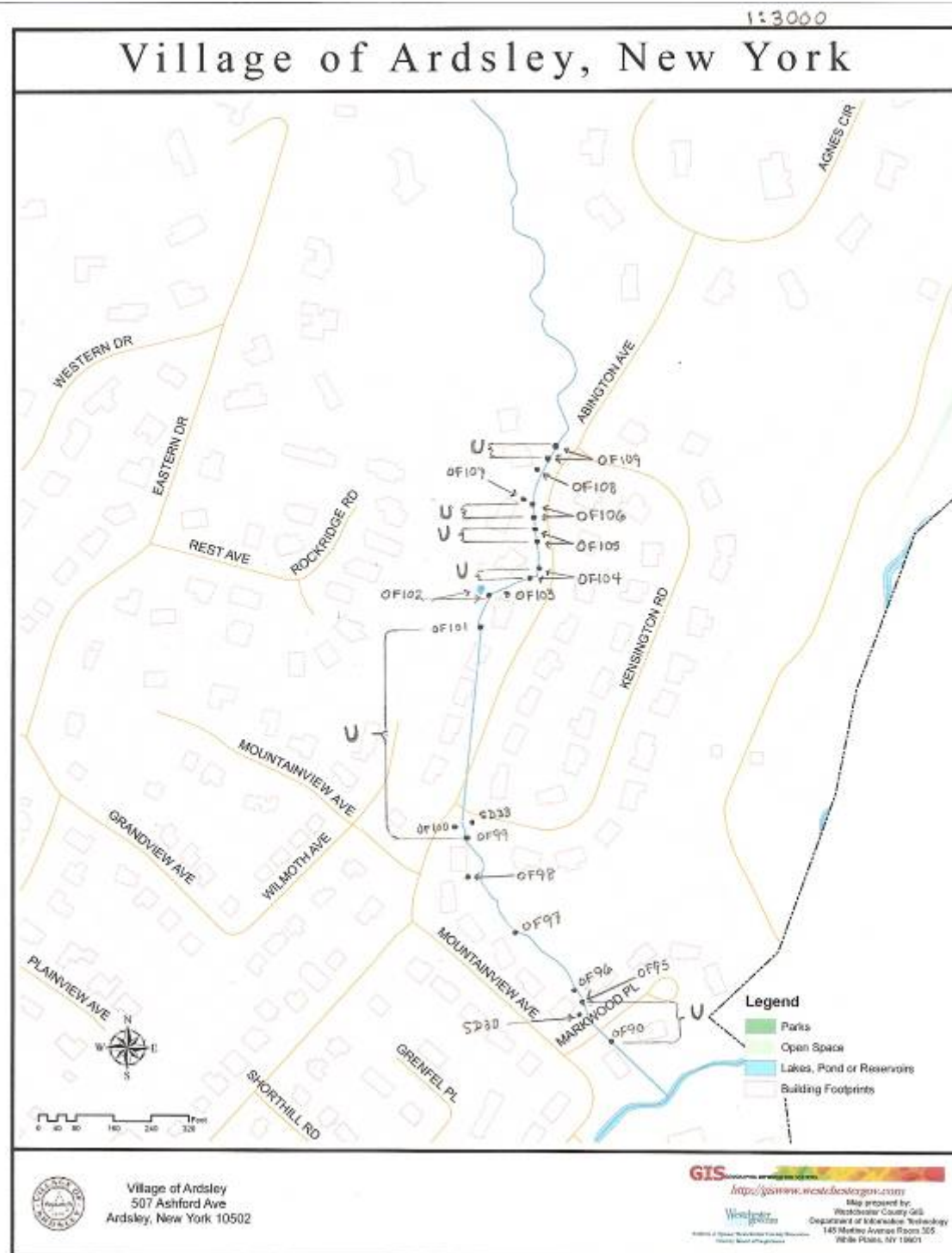


Village of Ardsley
#NYR20A316

Item 8c:

Markwood Mt View
Outfall Map

U = under surface

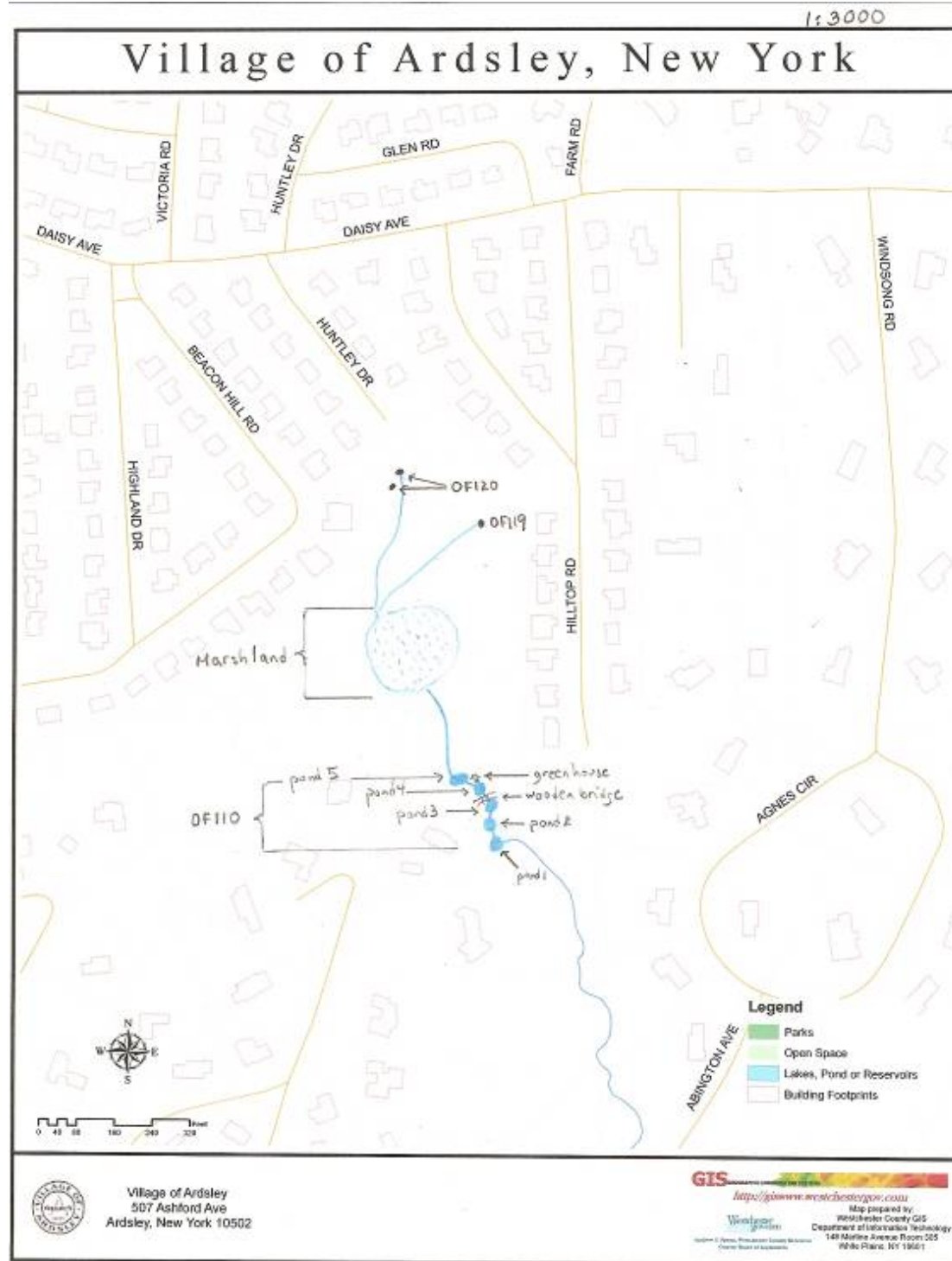


Village of Ardsley
#NYR20A316

Item 8d:

Abington Agnes Circle
Outfall Map

U = under surface

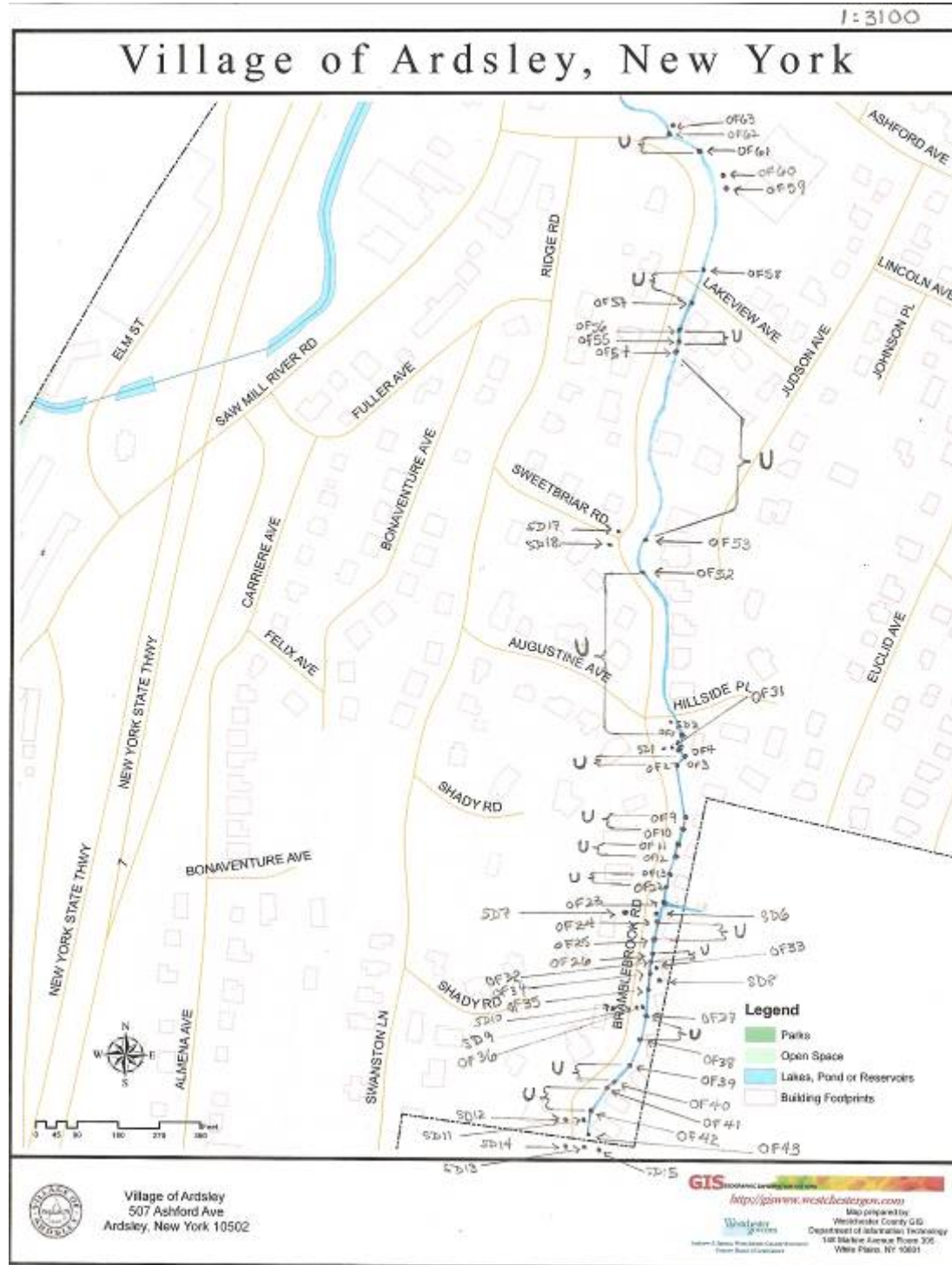


Village of Ardsley
#NYR20A316

Item 8e:

**Bramble Brook
Outfall Map**

U = under surface

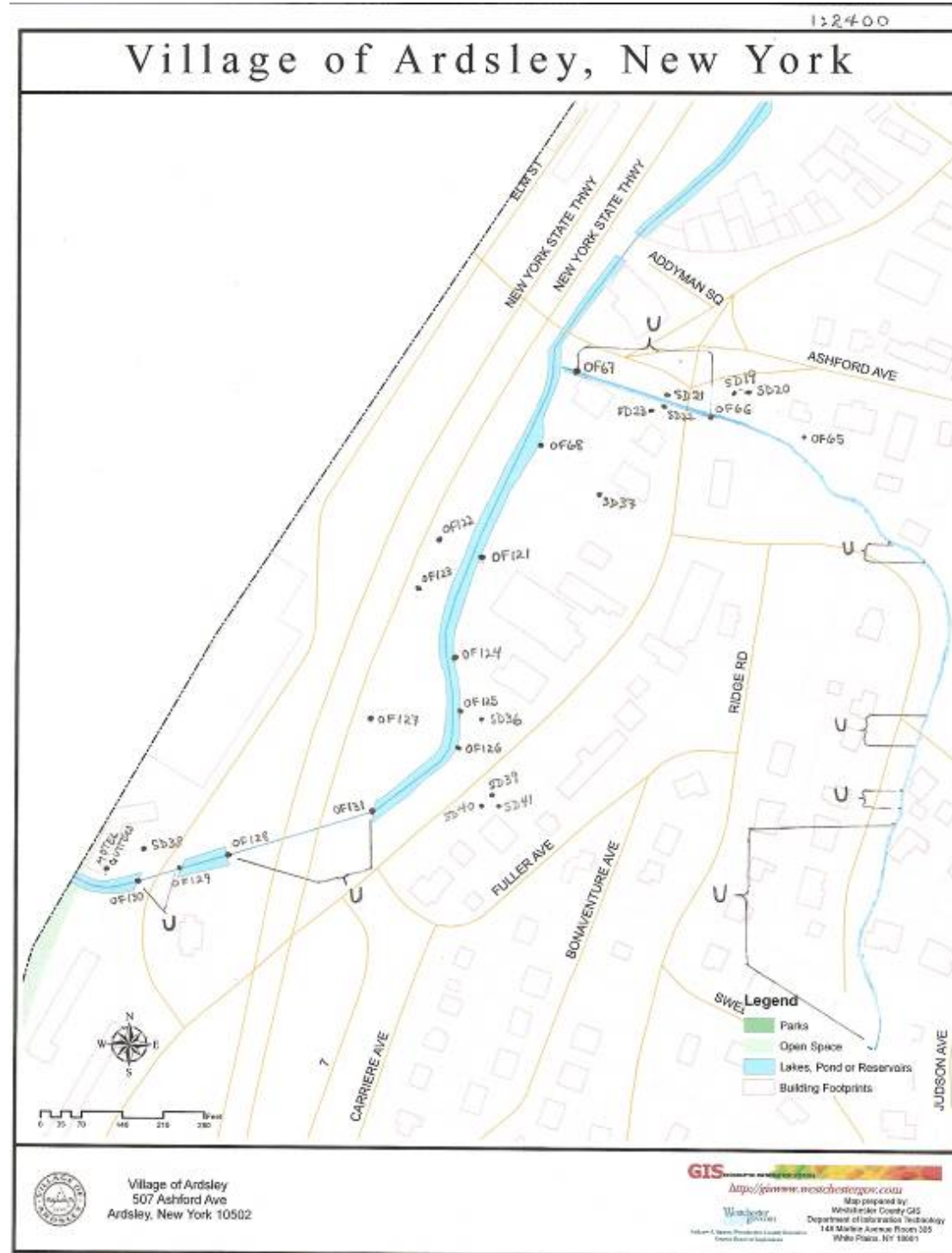


Village of Ardsley
#NYR20A316

Item 8f:

Ashford 9a Elm
Outfall Map

U = under surface

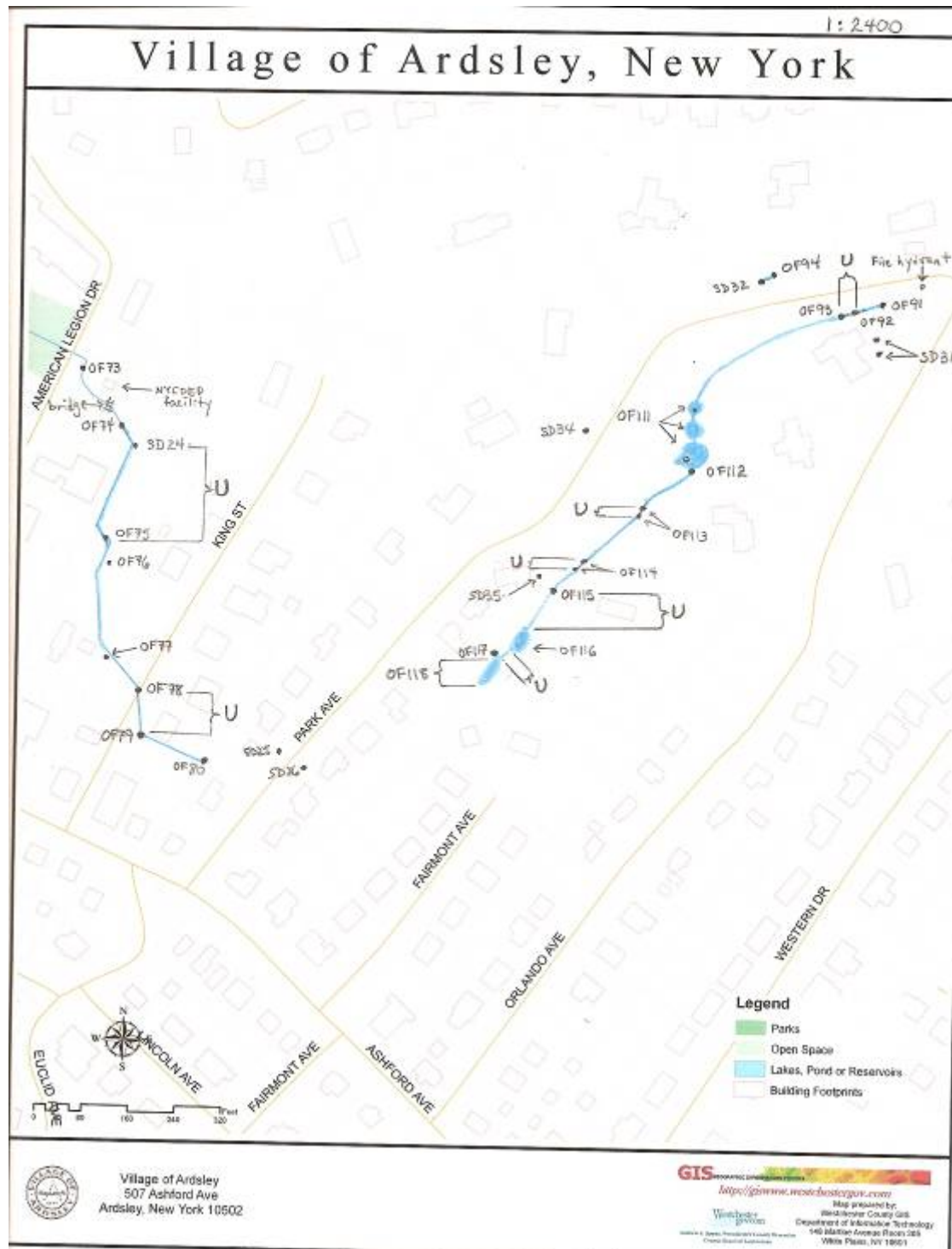


Village of Ardsley
#NYR20A316

Item 8g:

American Legion
King St Park Ave
Outfall Map

U = under surface

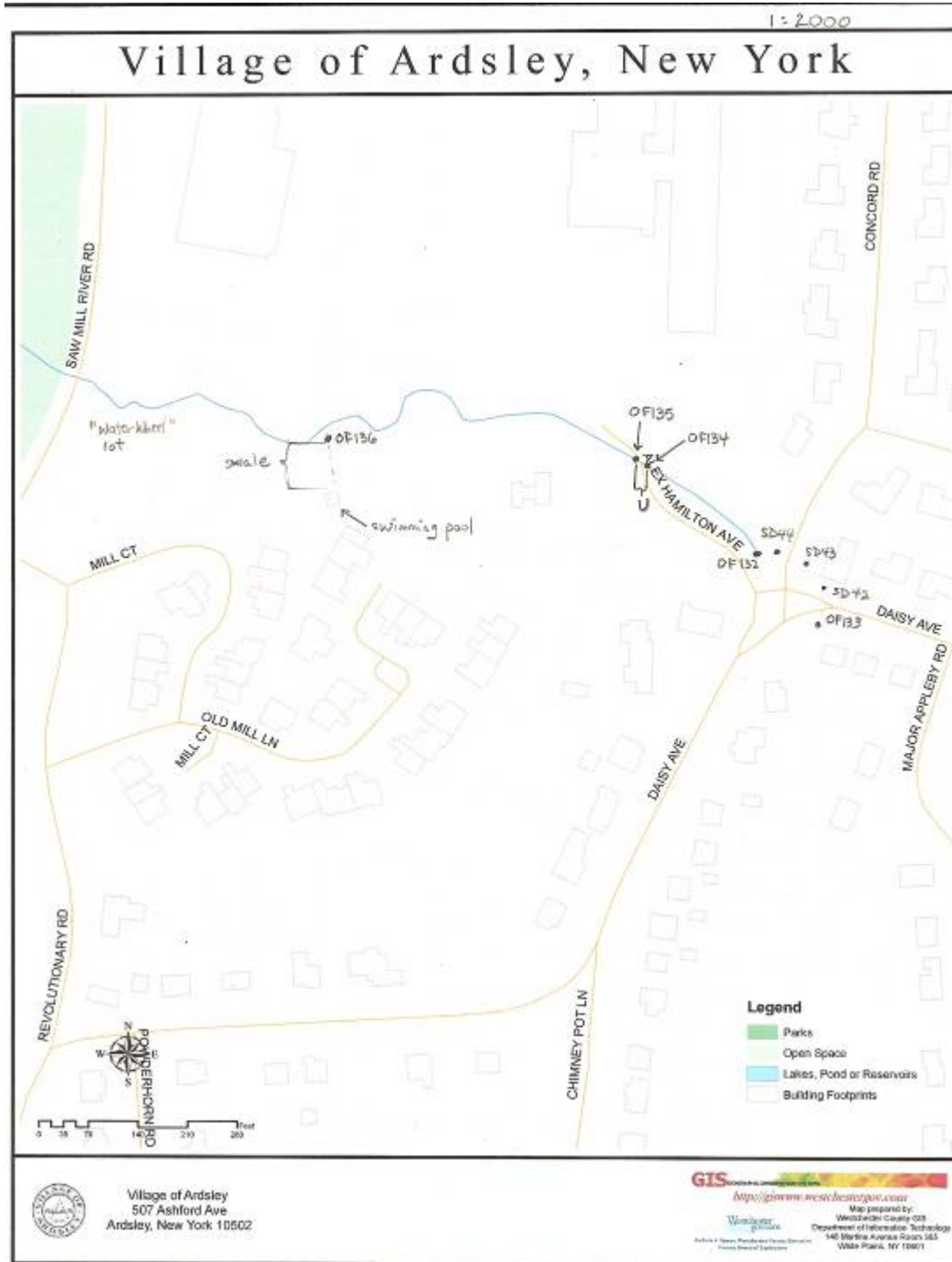


Village of Ardsley
#NYR20A316

Item 8h:

Concord Rd
Outfall Map

U = under surface



Item 8i: Dellwood Heatherdell Outfall Photos



Fountain in Dellwood Pond
(looking from north to south)



SD4:
N 41 01 0.140
W 73 49 0.990



OF5:
N 41 01 0.119
W 73 49 0.964
7''d white PVC elbow
at surface, anchored in cement, dry, tall
veg. covering



OF6:
30''d double cement pipes covered by metal
grill
15'' to top, yellow plastic booms in water,
some floating algae



OF8:
N 41 01 0.113
W 73 49 0.987
4''d white PVC, 4''d black corr plastic
at surface, dry
black pipe broken at 25' northwest (N
0.127 W 0.996)



OF7:
N 41 01 0.089
W 73 49 0.934
stone wall at south side of pond
66" top of wall to water level on south side
outlet
red metal device at south side

**Item 8i: Dellwood Heatherdell Outfall
Photos**



OF14:
N 41 01 0.081
W 73 49 0.927
4"d iron pipe and valve
3' to top, very rusty, steady flow of stream,
clear & clean



OF15:
N 41 01 0.076
W 73 49 0.915
1/2" PVC (UL listed)
at surface, no outlet, stream is clean &
clear, water depth 8"



Pond 1:
N 41 01 0.072
W 73 49 0.905
13' diameter of pond
depth of pond 1.5'
clean & clear, leaves at bottom



OF16:
N 41 01 0.065
W 73 49 0.905
3.5"d white PVC
at surface, dry



OF17:

N 41 01 0.065

W 73 49 0.915

4"d black corr plastic

31" from surface,

water depth 6", clean & clear



OF18:

N 41 01 0.054

W 73 49 0.891

½" PVC (UL listed)

at surface, no outlet,

swift stream



OF19:

N 41 01 0.052

W 73 49 0.903

5"d double clay pipes

10" to top, north pipe has flow, south has

none,

water depth 2", clean & clear



Pond 2:

N 41 01 0.053

W 73 49 0.915

19' diameter of pond

depth of pond 6"

clean & clear, live frog found



OF20:

N 41 01 0.047

W 73 49 0.885

4'd corr steel

at surface, slight rust,

2" water depth, east side outlet covered with veg.

Item 8i: Dellwood Heatherdell Outfall

Photos



SD5:

N 41 01 0.054

W 73 49 0.089

2 black corr pipes east side,
1 black corr south side,
17" to top, no flow,
no water in drain, leaves

**Item 8i: Dellwood Heatherdell Outfall
Photos**



OF21:

N 41 01 0.065

W 73 49 0.840

29" d black corr plastic
at surface, 7" water depth, swift, clean &
clear



Valve:

at property line



OF27:

N 41 01 0.046

W 73 49 0.862

3' d black corr plastic
under wall, water depth 16", clear & clean



OF28:

N 41 01 0.037

W 73 49 0.866

2' d cement
6" to top, swift flow, some branches &
debris, clear



OF29:

N 41 01 0.015

W 73 49 0.744

3 X 3"d & 2 X 5"d white PVC (5 total pipes)

5' to top, 3' to stream below, 5"d pipe with water flow has algae and black sediment, 3"d pipe with flow has no sediment, other 3 pipes no flow

Item 8i: Dellwood Heatherdell Outfall Photos



OF30:

1'd black corr plastic

4' to top, outlet reduced by adding stone and cement from original 2'd metal pipe, oil slick on surface of water and rust on rocks, stagnant water, foul odor noted

SD16:

N 41 01 0.047

W 73 49 0.708



OF44:

N 41 01 0.038

W 73 49 0.688

3'd black corr, 1' to top, swift, clean and clear, 1' deep



OF45:

N 41 01 0.066

W 73 49 0.614

2'd corr metal, 2' to top, moderate flow, cloudy stream, 1' deep

Item 8j: Ashford Park Outfall Photos



OF46:
N 41 00 0.255
W 73 50 0.133
3'd cement, at surface,
1' deep, some muck



OF47:
N 41 00 0.255
W 73 50 0.133
3'd corr steel, slight rust,
5' to top, clear & clean



OF48:
N 41 00 0.255
W 73 50 0.133
24' wide bridge,
10' wide stream
west overgrown,
east clear



OF49:
N 41 00 0.255
W 73 50 0.145
24' wide bridge,
west silt, east clear
1' deep



OF50:
N 41 00 0.255
W 73 50 0.145
3'd steel pipe,
3' to top, steady flow



OF51:
N 41 00 0.211
W 73 50 0.179
4'' black corr, at surface
stream width 5', 10'' deep
clean & clear, swift flow



Item 8j: Ashford Park Outfall Photos

OF64:

N 41 00 0.162

W 73 50 0.258

4" d white PVC, at surface

4" black corr, at surface

1' deep, clean & clear



Multi-branched stream:

N 41 00 0.123

W 73 50 0.314

marshland

no smell, clean & clear

**Item 8k: Ashford Ave Cross Rd Outfall
Photos**



OF72:
N 41 00 0.371
W 73 50 0.103
4"d black metal, 5" to top
dry, in stone wall



OF71:
N 41 00 0.371
W 73 50 0.103
4"d rusted steel, 5" to top
dry, in stone wall



OF70:
N 41 00 0.352
W 73 50 0.131
3'd steel corr, 3' to top
5" deep, flowing east to stream
4"d white PVC, 3' to top
dry, on north side



OF69:
N 41 00 0.339
W 73 50 0.112
6"d white PVC, at surface
dry, west bank

**Item 8l: Markwood Mountainview
Outfall Photos**

SD27:

N 4100 0.387
W 73 50 0.099

(OF81, OF82 and OF83 are on round pond
– 109'd)



OF81:

N 41 00 0.317
W 73 50 0.154
4"d cracked PVC, at surface
dry, no smell



OF82:

N 41 00 0.327
W 73 50 0.150
4"d cracked PVC, at surface
dry, no smell



OF83:

N 41 00 0.332
W 73 50 0.143
4"d PVC, at surface
dry, no smell



OF84:

N 41 00 0.382
W 73 50 0.096
bridge overpass,
large iron pipe crosses stream
(pipe has no outlet)
18"deep, clear & clean,
no smell



OF85:

N 41 00 0.400
W 73 50 0.103
2 X 4"d black plastic, dry
empties to street



OF86:

N 41 00 0.442
W 73 50 0.062
5'd double cement pipes
6' below street level
east pipe fast flow,
west pipe slow flow
no smell

SD28:

N 41 00 0.443
W 73 50 0.054

**Item 8l: Markwood Mountainview
Outfall Photos**

SD29:

N 41 00 0.471
W 73 50 0.047

SD30:

N 41 00 0.483
W 73 50 0.057



OF87:

N 41 00 0.441
W 73 50 0.056
5'd concrete, 5' to top
clean water but lots of debris



OF88:

N 41 00 0.456
W 73 50 0.041
4'd black PVC, at surface
dry



OF89:

N 41 00 0.447
W 73 50 0.035
4'd broken black metal,
at surface, dry



OF90:

N 41 00 0.485
W 73 50 0.050
3'd concrete, 3' to top
6" deep, clean & clear

SD33:

N 41 00 0.558
W 73 50 0.116



OF95:

N 41 00 0.483
W 73 50 0.056
2'd cement, 2' to top
lots of leaves, clean water



OF96:

N 41 00 0.490
W 73 50 0.067
4'd black corr, at surface
dry



OF97:
N 41 00 0.475
W 73 50 0.080
4" d white PVC, at surface
dry



OF98:
N 41 00 0.530
W 73 50 0.110
4" black corr, at surface
leads to swale which leads to stream, dry



OF99:
N 41 00 0.542
W 73 50 0.120
3' d metal corr, at surface
1' deep, clear & clean



OF100:
N 41 00 0.550
W 73 50 0.119
4" d clay, 2' to top
in cement wall, dry
part of old drain system



OF101:
N 41 00 0.637
W 73 50 0.101
2' d cement, 3' to top
1' deep, no smell
clean & clear

Item 81: Markwood Mountainview Outfall Photos



south side



forebay



north side

OF102:

N 41 00

W 73 50

2 X 2'd black PVC,

1'd black PVC, 1' to top

6" deep, some sediment

4" black corr, at surface

dry, south side

small pond area (forebay?)

north side

**Item 8l: Markwood Mountainview
Outfall Photos**



OF103:

N 41 00

W 73 50

4" white PVC, at surface

no flow

Item 8m: Bramble Brook South Outfall

Photos

SD1:

N 41 00 0.437

W 73 50 0.831

SD2:

N 41 00 0.458

W 73 50 0.839

SD3:

N 41 00 0.437

W 73 50 0.855



OF1:

N 41 00 0.440

W 73 50 0.817

2'd black corr plastic

1' to top, slight flow,

6" depth, slight algae



OF4:

N 41 00 0.449

W 73 50 0.816

2'd severely rusted steel corr

5' to top, no flow, trash



OF3:

N 41 00 0.428

W 73 50 0.812

2'd steel corr, 1 1/2 'd concrete

4' to top, steel pipe dry, concrete pipe wet,

1" depth, slight rust in culvert



OF2:

N 41 00 0.428

W 73 50 0.823

2 1/2 'd rusted steel corr

6' to top, 6" depth water, fairly clean



OF9:

N 41 00 0.418

W 73 50 0.810

2'd black corr plastic

5' to top, 4" depth swift flow, clean & clear



OF10:
 N 41 00 0.409
 W 73 50 0.820
 2'd rusted steel
 6' to top of steel pipe
 4" white PVC, 4' black corr
 at surface on east side
 5" depth swift flow, clean & clear

**Item 8m: Bramble Brook South Outfall
 Photos**



OF11:
 N 41 00 0.402
 W 73 50 0.822
 2'd steel, slight rust
 3' to top



OF12:
 N 41 00 0.398
 W 73 50 0.819
 2'd steel
 3' to top, 5" depth swift flow, clean & clear



OF13:
 N 41 00 0.392
 W 73 50 0.823
 2'd steel slight rust, 2 X 4" black PVC
 pipes above
 3' to top of steel pipe
 4" white PVC, 4" black corr on east side of
 stream at surface
 5" depth swift flow

SD6:
 N 41 00 0.373
 W 73 50 0.823

SD7:
 N 41 00 0.371
 W 73 50 0.844



OF22:

N 41 00
W 73 50 0.826
2'd corr steel slight rust
2 ½ ' to top
10" depth swift flow
4" black corr plastic on east side
at surface, no flow

**Item 8m: Bramble Brook South Outfall
Photos**



(stream to right)



(looking east at stream)

OF23:

1' wide stream running east to west



OF24:

N 41 00 0.377
W 73 50 0.847
9" opening in wall, no pipe
4' to water level, 10" depth moderate flow,
silt buildup



OF25:

N 41 00 0.375
W 73 50 0.849
9" opening in wall, remains of rusted steel
pipe in wall
3' to top of opening
swift flow, clean & clear
Note: flow is swifter on south side
(possible blockage underground)



OF26:

N 41 00 0.370

W 73 50 0.840

9''d exposed of 2'd black corr pipe buried
in silt

4' to top, swift flow

4'' black PVC on east side

SD8:

N 41 00

W 73 50

SD9:

N 41 00 0.344

W 73 50 0.841

SD10:

N 41 00 0.334

W 73 50 0.844



OF31:

N 41 00 0.429

W 73 50 0.832

18''d cement

3' to top

dry,



OF32:

N 41 00 0.363

W 73 50 0.840

2'd black corr

2' from surface, swift flow

6''d white PVC

2' from surface, some flow

2 X 4''d black corr

some flow, no smell

Item 8m: Bramble Brook South Outfall
Photos



OF33:
 N 41 00 0.360
 W 73 50 0.842
 4" d white PVC at surface, dry



OF34:
 N 41 00 0.355
 W 73 50 0.843
 2' d black corr, 3' to top, swift
 3 X 4" d white PVC
 at surface, dry
 some leaves

**Item 8m: Bramble Brook South Outfall
 Photos**



OF35:
 N 41 00 0.348
 W 73 50 0.838
 2' d black corr, 3' to top, moderate flow,
 collapsed stone wall obstruction
 4" d black PVC, 1' to top, dry



OF36:
 N 41 00 0.344
 W 73 50 0.841
 18" d cement, 6" to top, dry
 comes off SD9



OF37:
 N 41 00 0.335
 W 73 50 0.836
 18" d rusted steel, bottom missing, 3' to top,
 obscured by veg., swift, no smell
 2 X 4" d black corr at surface, dry
 6" d asbestos at surface, dry



OF38:

N 41 00 0.333

W 73 50 0.840

18" d corr steel, 3' to top, swift flow, litter and brown deposits

SD11:

N 41 00 0.306

W 73 50 0.867

SD12:

N 41 00 0.306

W 73 50 0.869

SD13:

N 41 00 0.292

W 73 50 0.870

SD14: Greenburgh

SD15: Greenburgh

Item 8m: Bramble Brook South Outfall Photos



OF39:

N 41 00

W 73 50

2' d black corr, 5' to top, moderate flow, 10" depth



OF40:

N 41 00

W 73 50

2' d black corr, 3' to top, swift
3 X 4' d black corr at surface, dry



OF41:

N 41 00

W 73 50

2' d black corr, 16" to top, swift flow, 3' wide stream, clear and clean



OF42:

N 41 00 0.307

W 73 50 0.867

30" d black corr, 5' to top with grating, swift flow
18" d cement pipe on west side from SD, 18" to top



SD15: Greenburgh
very deep catch basin at north edge of
SD43

**Item 8m: Bramble Brook South Outfall
Photos**

OF43:
N 41 00 0.297
W 73 50 0.865
2 X 18" d cement, 2' to top,
4 X 4" d white PVC east side at surface
hole on west side to gap in west wall

Item 8n: Bramble Brook North Outfall

Photos

SD17 (CB):

N 41 00 0.519

W 73 50 0.851

SD18 (CB):

N 41 00 0.515

W 73 50 0.853



OF52:

N 41 00 0.505

W 73 50 0.842

3'd corr steel, 2' to top
6'd deep, clean & clear,
moderate flow



OF53:

N 41 00 0.518

W 73 50 0.842

3'd corr steel, at surface
6'd corr steel, 1' to top on east side



OF54:

N 41 00 0.586

W 73 50 0.824

30" X 40" cement ellipse
5' to top, 1'd deep, moderate clear & clean



OF55:

N 41 00 0.586

W 73 50 0.824

30" X 40" cement ellipse
at surface, 6' wide stream



OF56:

N 41 00 0.590

W 73 50 0.824

30" X 40" cement ellipse
1' to top, rapid flow



OF57:

N 41 00 0.604

W 73 50 0.822

30" X 40" cement ellipse
at surface, 10'd deep,
swift flow, clear & clean



OF58:
N 41 00 0.614
W 73 50 0.818
30" X 40" cement ellipse
at surface, very swift,
clean & clear



OF59:
N 41 00 0.639
W 73 50 0.813
1'd black PVC, on east side slope, 3' to
top, dry, sewage smell (near sanitary
sewer)

**Item 8n: Bramble Brook North Outfall
Photos**



OF60:
N 41 00 0.639
W 73 50 0.813
6'd white PVC, 5' to top
dry
1'd green plastic, 5' to top
dry



OF61:
N 41 00 0.645
W 73 50 0.819
3'd cement, 30" to top
slight suds generated



OF62:
N 41 00 0.660
W 73 50 0.828
3'd cement, 2' to top
swift, slight suds



OF63:
N 41 00 0.660
W 73 50 0.828
6'd grey PVC, at surface
dry

SD19:
N 41 00 0.703
W 73 50 0.877

Item 8n: Bramble Brook North Outfall
Photos



OF65:
N 41 00 0.682
W 73 50 0.860
4”d black corr, at surface
dry



OF66:
N 41 00 0.700
W 73 50 0.899
30” tall cement “horseshoe” at surface,
leads to 22”d pipe
40” to water from surface, swift flow,
debris, floatables

**Item 8o: 9A South Saw Mill River
Outfall Photos**

SD19:

N 41 00 0.707
W 73 50 0.883

SD20:

N 41 00 0.707
W 73 50 0.878

SD21:

N 41 00 0.704
W 73 50 0.909

SD22:

N 41 00 0.693
W 73 50 0.909

SD23:

N 41 00 0.989
W 73 50 0.912



OF67:

N 41 00 0.711
W 73 50 0.947
3'd metal corr, 3' to top
6" black corr, building drain
6" deep, no smell



OF68:

N 41 00 0.683
W 73 50 0.952
inlet, stone wall
1' deep, no smell

SD36 (CB):

N 41 00 0.618
W 73 50 0.975
pumps inside,
drain near garage

SD37 (CB):

N 41 00 0.671
W 73 50 0.933



OF121:

N 41 00 0.651
W 73 50 0.973
swale, at surface
east bank, dry



OF122:

N 41 00 0.651
W 73 50 0.973
18" metal, 3' to top
west bank Thruway, dry



OF123:

N 41 00 0.642

W 73 50 0.982

18" d concrete, 25' below highway, west bank, dry
lots of silt



OF124:

N 41 00 0.623

W 73 50 0.987

1' d metal sealed with concrete with 3" d PVC
4' to top, dry
1" d black PVC inside
at surface, dry
slight smell of solvent

**Item 80: 9A South Saw Mill River
Outfall Photos**



OF125:

N 41 00 0.613

W 73 50 0.981

1' d iron, 4' to top
slight flow



OF126:

N 41 00 0.606

W 73 50 0.978

18" d concrete, 4' below road surface,
greenish black deposit on asphalt,
swift flow over surface,
east bank



OF127:

N 41 00 0.606

W 73 50 0.978

2' d concrete leading to swale
3' from surface,
dry, west bank

SD38:

N 41 00 0.582

W 73 51 0.096

SD39 (CB):

N 41 00 0.592

W 73 50 0.971

SD40 (CB):

N 41 00 0.588

W 73 50 0.976

SD41:

N 41 00 0.590

W 73 50 0.968



OF128:

N 41 00 0.561

W 73 51 0.078

49'w east overpass,
20' below Thruway,
no debris



OF130:

N 41 00 0.569

W 73 51 0.103

49' wide overpass,
Elm St west side,
clean & clear, no smell



OF131:

N 41 00 0.574

W 73 51 0.007

49' wide overpass,
20' below Thruway
9A side



OF129:

N 41 00 0.561

W 73 51 0.092

49' wide overpass,
Elm St east side
debris



Motel gutters:

lead to parking lot

**Item 8o: 9A South Saw Mill River
Outfall Photos**

**Item 8p: American Legion King St
Outfall Photos**

SD24:

N 41 00 0.738

W 73 50 0.629



OF73:

N 41 00 0.771

W 73 50 0.667

large cement vented block,
lots of leaves



OF74:

N 41 00 0.751

W 73 50 0.651

5'd cement, 3' to top
grating cover (no longer screwed on),
leaves halfway up grating, styrofoam buoy
6" deep, swift, no smell



OF75:

N 41 00 0.722

W 73 50 0.659

5'd cement, 3' to top
stream 4' above,
dropoff to pipe,
some leaves, clean water



OF76:

N 41 00 0.720

W 73 50 0.660

8" d white PVC, at surface
slight drip



OF77:

N 41 00 0.689

W 73 50 0.650

10" white PVC, at surface
clean & clear, no smell



OF80:

N 41 00 0.667

W 73 50 0.625

double 30" d cement,
at surface of backyard
clean & clear



flow from southeast



flow from east

OF78:

N 41 00 0.673

W 73 50 0.644

30" cement, 4' to top

slight debris

6" deep, swift, clean & clear

flow from southeast

bifurcates, flow from due east

SD25:

N 41 00 0.665

W 73 50 0.587

SD26:

N 41 00 0.661

W 73 50 0.584



OF79:

N 41 00 0.667

W 73 50 0.646

double 18" d corr metal,

2' to top,

flow east to southwest,

8" deep, clean & clear

**Item 8p: American Legion King St
Outfall Photos**

Item 8q: Park Ave Outfall Photos
Fire Hydrant;

N 41 00 0.802

W 73 50 0.348



SD31 (with 4" PVC pipe):

N 41 00 0.784

W 73 50 0.371

(west side open,
east side blocked)

SD32:

N 41 00 0.791

W 73 50 0.382

(water from west slope,
obscured by leaves)



looking north



looking south

OF91:

N 41 00 0.784

W 73 50 0.354

stream begins, no pipe
some debris



OF92:

N 41 00 0.786

W 73 50 0.374

18" d cement, 3' to top
3" deep, clean & clear



OF93:

N 41 00 0.782

W 73 50 0.379

2' d metal corr, 3' to top
slower than north side



OF94:
 N 41 00 0.791
 W 73 50 0.382
 1'd black corr, at surface
 slight flow, no smell

SD34:
 N 41 00 0.751
 W 73 50 0.465



OF111:
 N 41 00 0.767
 W 73 50 0.437
 north side:
 pond, 1' deep, moderate algae
 square drain
 south side:
 2 ponds, 2' deep, no algae
 aerated with fountain
 no smell
 round drain



OF112:
 N 41 00 0.742
 W 73 50 0.446
 1'd metal corr, at surface
 6" deep, swift, clean & clear

Item 8q: Park Ave Outfall Photos



OF113:

N 41 00 0.731

W 73 50 0.460

north side:

1'd clay, 1' to top

south side:

1'd clay, 3' to top

swift, clear & clean

no smell



OF114:

N 41 00 0.732

W 73 50 0.462

north side:

no pipe, stone wall opening,

3' to top

3"deep, lots of leaves

south side:

no pipe, stone wall opening,

5' to top,

some debris, lots of leaves

swift, clean water

SD(CB)35:

N 41 00 0.704

W 73 50 0.480

Item 8q: Park Ave Outfall Photos



OF115:

N 41 00 0.696

W 73 50 0.496

no pipe, opening 5' to top

lots of leaves, no smell



OF116:

N 41 00 0.690

W 73 50 0.512

pond, 19'wide X 36'long 1'deep, stagnant,

some debris

no smell



OF117:

N 41 00

W 73 50

water resurfaces, no pipe
stand of bamboo



OF118:

N 41 00 0.675

W 73 50 0.506

marsh, 27' wide X 79' long
6" deep, muddy, lots of leaves
no smell, water runs N to S

Item 8r: Concord Rd Outfall Photos

SD42:

N 41 01 0.047

W 73 50 0.415

SD(CB)43:

N 41 01 0.051

W 73 50 0.423

SD(CB)44:

N 41 01 0.057

W 73 50 0.427



OF132:

N 41 01 0.054

W 73 50 0.427

3 X cement pipes:

20" d, dry

27" d, flow

36" d, dry

1' to top, moderate debris

no smell, clean water



OF133:

N 41 01

W 73 50

6" d black corr, at surface
dry, empties to street



OF134:

N 41 01 0.073

W 73 50 0.461

36" d cement, 3' to top
moderate debris



OF135:

N 41 01 0.086

W 73 50 0.488

36" d cement, at surface
slight debris, 1' deep,
no smell, clean water



north end



south end

OF136:

N 41 01 0.078

W 73 50 0.533

1' d metal corr,
open at swale, leads to stream,
dry

Item 8r: Concord Rd Outfall Photos

Item 9: "Resolution for Catch Basin Location Grant Application"

Mayor
(AY & LEON)

Trustees
LARRY J. NARDECCHIA, SR. - Deputy Mayor
MICHAEL J. KOLESAR
GARY J. MALONE
JERRY R. PORCINO



101 Ashford Avenue
Ardsley, New York 10502
(914) 883-1500
Fax (914) 883-3700
www.ardsleyvillage.com

Village Manager
GEORGE T. CALVI

Village President
MARION DE MAIO

Village Clerk
804 Village Manager
JESSIE HENNEBERRY

RESOLUTION FOR APPLICATION UNDER SMSIGP FOR 2005-06 RE STORMWATER CATCH BASIN LOCATION & IDENTIFICATION

A resolution of the Village Board of Trustees of the Village of Ardsley to act as a co-applicant in the submission of an application to the New York State Department of State for a grant under the Shared Municipal Services Incentive Grant Program for the 2005-2006 Program year. The grant application will be for a project titled "Stormwater Catch Basin Location and Identification"

Village Manager George Calvi is designated the "Co-Applicant Contact Person" and is authorized to act on behalf of the Village of Ardsley with respect to this grant application and enter into an IMA consistent with the terms of the resolution.

The maximum amount of money being applied for through this program shall be \$90,000. The local share to be provided by consortium members shall be \$10,000.00. The Village of Ardsley shall provide as its share of the local match a maximum of \$2,000.00.

The project co-applicants include:

Village of Sleepy Hollow, New York	Lead Applicant
Village of Ardsley, New York	Co-Applicant
Village of Dobbs Ferry, New York	Co-Applicant

Village of Elmsford, New York	Co-Applicant
Village of Irvington, New York	Co-Applicant
Village of Hastings-on-Hudson, New York	Co-Applicant
Village of Mt. Kisco	Co-Applicant
City of Peekskill, New York	Co-Applicant

The municipal consortium shall be responsible for project development, implementation and completion including securing the services of a Professional Engineering Firm to act as Project Manager and Lead Consultant. The municipal consortium, shall establish an advisory committee which shall oversee the work of the Project Manager / Lead Consultant.

Governing Board Members Voting Aye:

- Mayor Jay Leon
- Deputy Mayor Larry Nardecchia
- Trustee Michael Kolesar
- Trustee Gary Malone
- Trustee Peter Porcino

Certification

The above resolution was adopted by the Board
of Trustees of the Village of Ardsley on
January 17, 2006

Debbie Henneberry
Village Clerk

Item 10: IDDE Law Summary

Phase II Stormwater Management: Illicit Discharge Detection and Elimination Law

Provisions of the Clean Water Act (1987) require National Pollutant Discharge Elimination System (NPDES) permits for storm water discharges. New York State administers this through State Pollutant Discharge Elimination System (SPDES) regulations. Permits for Municipal Separate Storm Sewer Systems (MS4s), such as the Village of Ardsley, include a requirement to effectively prohibit problematic non-storm water discharges into storm sewers. Emphasis is placed on the elimination of inappropriate connections to storm drains. Municipalities must locate sources of non-storm water discharges into storm drains and institute appropriate actions for their elimination.

Dry weather flows from the storm drain system may contribute even more pollution than wet weather flow. Detecting and eliminating these illicit discharges is complex. Communities need to systematically characterize their stream, conveyance and storm sewer infrastructure. When illicit discharges are identified, they need to be removed. The process is ongoing and the effectiveness of the program should improve with time.

Illicit discharges can be from a storm drain that has measurable flow during dry weather containing pollutants and/or pathogens. If no pollutants are present, the flow is simply considered discharge. Each illicit discharge has a certain frequency, composition and mode of entry in the storm drain system. Illicit discharges are frequently caused when the sanitary sewage system interacts with the storm drain system. A variety of techniques are used to trace illegal sewage connections. Illicit discharges of other pollutants can be produced by specific source areas such as businesses or industrial operations. Some non-storm water discharges to the MS4 may be allowable, such as discharges resulting from fire fighting activities and air conditioning condensate.

The Illicit Discharge Detection and Elimination Local Law is intended to provide guidelines and procedures for prohibiting illicit discharges. The law itself has 20 sections. Section 1 states purpose and intent, Section 2 is definitions, Section 3 states that the law applies to all waters entering the MS4, Section 4 names the Storm Water Management Officer (SMO) as administrator and Section 5 provides for severability of any invalid portion of the law. Section 6 lists all discharges which are exempt from the law and not considered illicit. Additional discharges may be approved by the SMO upon written request (Section 6.1.2). Of particular note is Section 6.2.2 which provides for prohibition of pre-existing illicit connections, regardless of whether the connection was permissible under law prevailing at the time of connection. This would include, for instance, floor drains connected to the storm system; floor drains are not allowed to be connected to the storm system. Section 7 prohibits activities which contaminate storm water; Section 8 mandates the use of Best Management Practices by commercial and residential owners. Section 9 provides for the ability of the SMO to suspend access to the MS4 in emergency and violation situations. Section 10 stipulates that industrial and construction activities covered under a SPDES permit must comply with proper discharge practices. Section 11 delineates right of access to premises for the purpose of inspecting and monitoring compliance with the law. Section 12 outlines procedures for notification of spills of hazardous and non-hazardous nature. Section 13 details enforcement including remediation at the violator's expense, Section 14 provides an appeals process, Section 15 details corrective measures after the appeal and Section 16 allows for an injunction to prevent further violations if necessary. Section 17 allows for alternative punitive remedies, Section 18 deems violation of the law to be a public nuisance and Section 19 states that other federal, state or local laws also apply and remedies for compliance with the laws can be cumulative. Section 20 is adoption of the law.

Item 10: IDDE Law

**Local Law # 8 - 2005
to
Prohibit Illicit Discharges, Activities and Connections to Separate Storm Sewer System**

SECTION 1. PURPOSE/INTENT.

The purpose of this law is to provide for the health, safety, and general welfare of the citizens of the **Village of Ardsley** through the regulation of non-stormwater discharges to the municipal separate storm sewer system (MS4) to the maximum extent practicable as required by federal and state law. This law establishes methods for controlling the introduction of pollutants into the MS4 in order to comply with requirements of the SPDES General Permit for Municipal Separate Storm Sewer Systems. The objectives of this law are:

- 1.1 To meet the requirements of the SPDES General Permit for Stormwater Discharges from MS4s, Permit no. GP-02-02 or as amended or revised;
- 1.2 To regulate the contribution of pollutants to the MS4 since such systems are not designed to accept, process or discharge non-stormwater wastes;
- 1.3 To prohibit Illicit Connections, Activities and Discharges to the MS4;
- 1.4 To establish legal authority to carry out all inspection, surveillance and monitoring procedures necessary to ensure compliance with this law; and
- 1.5 To promote public awareness of the hazards involved in the improper discharge of trash, yard waste, lawn chemicals, pet waste, wastewater, grease, oil, petroleum products, cleaning products, paint products, hazardous waste, sediment and other pollutants into the MS4.

SECTION 2. DEFINITIONS.

Whenever used in this law, unless a different meaning is stated in a definition applicable to only a portion of this law, the following terms will have meanings set forth below:

- 2.1 Best Management Practices (BMPs). Schedules of activities, prohibitions of practices, general good house keeping practices, pollution prevention and educational practices, maintenance procedures, and other management practices to prevent or reduce the discharge of pollutants directly or indirectly to stormwater, receiving waters, or stormwater conveyance systems. BMPs also include treatment practices, operating procedures, and practices to control site runoff, spillage or leaks, sludge or water disposal, or drainage from raw materials storage.

- 2.2 Clean Water Act. The Federal Water Pollution Control Act (33 U.S.C. § 1251 et seq.), and any subsequent amendments thereto.
- 2.3 Construction Activity. Activities requiring authorization under the SPDES permit for stormwater discharges from construction activity, GP-02-01, as amended or revised. These activities include construction projects resulting in land disturbance of one or more acres. Such activities include but are not limited to clearing and grubbing, grading, excavating, and demolition.
- 2.4 Department. The New York State Department of Environmental Conservation.
- 2.5 Hazardous Materials. Any material, including any substance, waste, or combination thereof, which because of its quantity, concentration, or physical, chemical, or infectious characteristics may cause, or significantly contribute to, a substantial present or potential hazard to human health, safety, property, or the environment when improperly treated, stored, transported, disposed of, or otherwise managed.
- 2.6 Illicit Connections. Any drain or conveyance, whether on the surface or subsurface, which allows an illegal discharge to enter the MS4, including but not limited to:
1. Any conveyances which allow any non-stormwater discharge including treated or untreated sewage, process wastewater, and wash water to enter the MS4 and any connections to the storm drain system from indoor drains and sinks, regardless of whether said drain or connection had been previously allowed, permitted, or approved by an authorized enforcement agency; or
 2. Any drain or conveyance connected from a commercial or industrial land use to the MS4 which has not been documented in plans, maps, or equivalent records and approved by an authorized enforcement agency.
- 2.7 Illicit Discharge. Any direct or indirect non-stormwater discharge to the MS4, except as exempted in Section 6 of this law.
- 2.8 Industrial Activity. Activities requiring the SPDES permit for discharges from industrial activities except construction, GP-98-03, as amended or revised.
- 2.9 MS4. Municipal Separate Storm Sewer System.
- 2.10 Municipal Separate Storm Sewer System. A conveyance or system of conveyances (including roads with drainage systems, municipal streets, catch basins, curbs, gutters, ditches, man-made channels, or storm drains):
1. Owned or operated by the **Village of Ardsley**;
 2. Designed or used for collecting or conveying stormwater;
 3. Which is not a combined sewer; and
 4. Which is not part of a Publicly Owned Treatment Works (POTW) as defined at 40CFR 122.2
- 2.11 Municipality. The **Village of Ardsley**

- 2.12 Non-Stormwater Discharge. Any discharge to the MS4 that is not composed entirely of stormwater.
- 2.13 Person. Any individual, association, organization, partnership, firm, corporation or other entity recognized by law and acting as either the owner or as the owner's agent.
- 2.14 Pollutant. Dredged spoil, filter backwash, solid waste, incinerator residue, treated or untreated sewage, garbage, sewage sludge, munitions, chemical wastes, biological materials, radioactive materials, heat, wrecked or discarded equipment, rock, sand and industrial, municipal, agricultural waste and ballast discharged into water; which may cause or might reasonably be expected to cause pollution of the waters of the state in contravention of the standards.
- 2.15 Premises. Any building, lot, parcel of land, or portion of land whether improved or unimproved including adjacent sidewalks and parking strips.
- 2.16 Special Conditions.
1. Discharge Compliance with Water Quality Standards. The condition that applies where a municipality has been notified that the discharge of stormwater authorized under their MS4 permit may have caused or has the reasonable potential to cause or contribute to the violation of an applicable water quality standard. Under this condition the municipality must take all necessary actions to ensure future discharges do not cause or contribute to a violation of water quality standards.
 2. 303(d) Listed Waters. The condition in the municipality's MS4 permit that applies where the MS4 discharges to a 303(d) listed water. Under this condition the stormwater management program must ensure no increase of the listed pollutant of concern to the 303(d) listed water.
 3. Total Maximum Daily Load (TMDL) Strategy. The condition in the municipality's MS4 permit where a TMDL including requirements for control of stormwater discharges has been approved by EPA for a waterbody or watershed into which the MS4 discharges. If the discharge from the MS4 did not meet the TMDL stormwater allocations prior to September 10, 2003, the municipality was required to modify its stormwater management program to ensure that reduction of the pollutant of concern specified in the TMDL is achieved.
 4. The condition in the municipality's MS4 permit that applies if a TMDL is approved in the future by EPA for any waterbody or watershed into which an MS4 discharges. Under this condition the municipality must review the applicable TMDL to see if it includes requirements for control of stormwater discharges. If an MS4 is not meeting the TMDL stormwater allocations, the municipality must, within six (6) months of the TMDL's approval, modify its stormwater management program to ensure that reduction of the pollutant of concern specified in the TMDL is achieved.
- 2.17 State Pollutant Discharge Elimination System (SPDES) Stormwater Discharge Permit. A permit issued by the Department that authorizes the discharge of pollutants to waters of the state.

- 2.18 Stormwater. Rainwater, surface runoff, snowmelt and drainage.
- 2.19 Stormwater Management Officer (SMO). An employee, the municipal engineer or other public official(s) designated by the **Village of Ardsley** to enforce this local law. The SMO may also be designated by the municipality to accept and review stormwater pollution prevention plans, forward the plans to the applicable municipal board and inspect stormwater management practices.
- 2.20 303(d) List. A list of all surface waters in the state for which beneficial uses of the water (drinking, recreation, aquatic habitat, and industrial use) are impaired by pollutants, prepared periodically by the Department as required by Section 303(d) of the Clean Water Act. 303(d) listed waters are estuaries, lakes and streams that fall short of state surface water quality standards and are not expected to improve within the next two years.
- 2.21 TMDL. Total Maximum Daily Load.
- 2.22 Total Maximum Daily Load. The maximum amount of a pollutant to be allowed to be released into a waterbody so as not to impair uses of the water, allocated among the sources of that pollutant.
- 2.23 Wastewater. Water that is not stormwater, is contaminated with pollutants and is or will be discarded.

SECTION 3. APPLICABILITY.

This law shall apply to all water entering the MS4 generated on any developed and undeveloped lands unless explicitly exempted by an authorized enforcement agency.

SECTION 4. RESPONSIBILITY FOR ADMINISTRATION.

The Stormwater Management Officer(s) (SMO(s)) shall administer, implement, and enforce the provisions of this law. Such powers granted or duties imposed upon the authorized enforcement official may be delegated in writing by the SMO as may be authorized by the municipality.

SECTION 5. SEVERABILITY.

The provisions of this law are hereby declared to be severable. If any provision, clause, sentence, or paragraph of this law or the application thereof to any person, establishment, or circumstances shall be held invalid, such invalidity shall not affect the other provisions or application of this law.

SECTION 6. DISCHARGE PROHIBITIONS.

6.1 Prohibition of Illegal Discharges.

No person shall discharge or cause to be discharged into the MS4 any materials other than stormwater except as provided in Section 6.1.1. The commencement, conduct or continuance of any illegal discharge to the MS4 is prohibited except as described as follows:

- 6.1.1 The following discharges are exempt from discharge prohibitions established by this local law, unless the Department or the municipality has determined them to be substantial contributors of pollutants: water line flushing or other potable water sources, landscape irrigation or lawn watering, existing diverted stream flows, rising ground water, uncontaminated ground water infiltration to storm drains, uncontaminated pumped ground water, foundation or footing drains, crawl space, air conditioning condensate, irrigation water, springs, water from individual residential car washing, natural riparian habitat or wetland flows, dechlorinated swimming pool discharges, residential street wash water, water from fire fighting activities, and any other water source not containing pollutants. Such exempt discharges shall be made in accordance with an appropriate plan for reducing pollutants.
- 6.1.2 Discharges approved in writing by the SMO to protect life or property from imminent harm or damage, provided that, such approval shall not be construed to constitute compliance with other applicable laws and requirements, and further provided that such discharges may be permitted for a specified time period and under such conditions as the SMO may deem appropriate to protect such life and property while reasonably maintaining the purpose and intent of this local law.
- 6.1.3 Dye testing in compliance with applicable state and local laws is an allowable discharge, but requires a verbal notification to the SMO prior to the time of the test. 6.1.4 The prohibition shall not apply to any discharge permitted under an SPDES permit, waiver, or waste discharge order issued to the discharger and administered under the authority of the Department, provided that the discharger is in full compliance with all requirements of the permit, waiver, or order and other applicable laws and regulations, and provided that written approval has been granted for any discharge to the MS4.

6.2 Prohibition of Illicit Connections.

- 6.2.1 The construction, use, maintenance or continued existence of illicit connections to the MS4 is prohibited.
- 6.2.2 This prohibition expressly includes, without limitation, illicit connections made in the past, regardless of whether the connection was permissible under law or practices applicable or prevailing at the time of connection.
- 6.2.3 A person is considered to be in violation of this local law if the person connects a line conveying sewage to the municipality's MS4, or allows such a connection to continue.

SECTION 7. PROHIBITION AGAINST ACTIVITIES CONTAMINATING STORMWATER

7.1 Activities that are subject to the requirements of this section are those types of activities that:

7.1.1 Cause or contribute to a violation of the municipality's MS4 SPDES permit.

7.1.2 Cause or contribute to the municipality being subject to the Special Conditions as defined in Section 2 (Definitions) of this local law.

7.2 Upon notification to a person that he or she is engaged in activities that cause or contribute to violations of the municipality's MS4 SPDES permit authorization, that person shall take all reasonable actions to correct such activities such that he or she no longer causes or contributes to violations of the municipality's MS4 SPDES permit authorization.

SECTION 8. REQUIREMENT TO PREVENT, CONTROL, AND REDUCE STORMWATER POLLUTANTS BY THE USE OF BEST MANAGEMENT PRACTICES.

8.1 Best Management Practices

Where the SMO has identified illicit discharges as defined in Section 2 or activities contaminating stormwater as defined in Section 8 the municipality may require implementation of Best Management Practices (BMPs) to control those illicit discharges and activities.

8.1.1 The owner or operator of a commercial or industrial establishment shall provide, at their own expense, reasonable protection from accidental discharge of prohibited materials or other wastes into the MS4 through the use of structural and non-structural BMPs.

8.1.2 Any person responsible for a property or premise, which is, or may be, the source of an illicit discharge as defined in Section 2 or an activity contaminating stormwater as defined in Section 8, may be required to implement, at said person's expense, additional structural and non-structural BMPs to reduce or eliminate the source of pollutant(s) to the MS4.

8.1.3 Compliance with all terms and conditions of a valid SPDES permit authorizing the discharge of stormwater associated with industrial activity, to the extent practicable, shall be deemed compliance with the provisions of this section.

SECTION 9. SUSPENSION OF ACCESS TO MS4. Illicit Discharges in Emergency Situations.

9.1 The SMO may, without prior notice, suspend MS4 discharge access to a person when such suspension is necessary to stop an actual or threatened discharge which presents or may present imminent and substantial danger to the environment, to the health or welfare of persons, or to the MS4. The SMO shall notify the person of such suspension within a reasonable time thereafter in writing of the reasons for the suspension. If the violator fails to comply with a suspension order issued in an emergency, the SMO may take such steps as deemed necessary to prevent or minimize damage to the MS4 or to minimize danger to persons.

9.2 Suspension due to the detection of illicit discharge. Any person discharging to the municipality's MS4 in violation of this law may have their MS4 access terminated if such termination would abate or reduce an illicit discharge. The SMO will notify a violator in writing of the

proposed termination of its MS4 access and the reasons therefor. The violator may petition the SMO for a reconsideration and hearing. Access may be granted by the SMO if he/she finds that the illicit discharge has ceased and the discharger has taken steps to prevent its recurrence. Access may be denied if the SMO determines in writing that the illicit discharge has not ceased or is likely to recur. A person commits an offense if the person reinstates MS4 access to premises terminated pursuant to this Section, without the prior approval of the SMO.

SECTION 10. INDUSTRIAL OR CONSTRUCTION ACTIVITY DISCHARGES.

Any person subject to an industrial or construction activity SPDES stormwater discharge permit shall comply with all provisions of such permit. Proof of compliance with said permit may be required in a form acceptable to the municipality prior to the allowing of discharges to the MS4.

SECTION 11. ACCESS AND MONITORING OF DISCHARGES.

- 11.1 Applicability. This section applies to all facilities that the SMO must inspect to enforce any provision of this Law, or whenever the authorized enforcement agency has cause to believe that there exists, or potentially exists, in or upon any premises any condition which constitutes a violation of this Law.
- 11.2 Access to Facilities.
 - 11.2.1 The SMO shall be permitted to enter and inspect facilities subject to regulation under this law as often as may be necessary to determine compliance with this Law. If a discharger has security measures in force which require proper identification and clearance before entry into its premises, the discharger shall make the necessary arrangements to allow access to the SMO.
 - 11.2.2 Facility operators shall allow the SMO ready access to all parts of the premises for the purposes of inspection, sampling, examination and copying of records as may be required to implement this law.
 - 12.2.3 The municipality shall have the right to set up on any facility subject to this law such devices as are necessary in the opinion of the SMO to conduct monitoring and/or sampling of the facility's stormwater discharge.
 - 11.2.4 The municipality has the right to require the facilities subject to this law to install monitoring equipment as is reasonably necessary to determine compliance with this law. The facility's sampling and monitoring equipment shall be maintained at all times in a safe and proper operating condition by the discharger at its own expense. All devices used to measure stormwater flow and quality shall be calibrated to ensure their accuracy.
 - 11.2.5 Unreasonable delays in allowing the municipality access to a facility subject to this law is a violation of this law. A person who is the operator of a facility subject to this law commits an offense if the person denies the municipality reasonable access to the facility for the purpose of conducting any activity authorized or required by this law.

- 11.2.6 If the SMO has been refused access to any part of the premises from which stormwater is discharged, and he/she is able to demonstrate probable cause to believe that there may be a violation of this law, or that there is a need to inspect and/or sample as part of a routine inspection and sampling program designed to verify compliance with this law or any order issued hereunder, then the SMO may seek issuance of a search warrant from any court of competent jurisdiction.

SECTION 12. NOTIFICATION OF SPILLS.

Notwithstanding other requirements of law, as soon as any person responsible for a facility or operation, or responsible for emergency response for a facility or operation has information of any known or suspected release of materials which are resulting or may result in illegal discharges or pollutants discharging into the MS4, said person shall take all necessary steps to ensure the discovery, containment, and cleanup of such release. In the event of such a release of hazardous materials said person shall immediately notify emergency response agencies of the occurrence via emergency dispatch services. In the event of a release of non-hazardous materials, said person shall notify the municipality in person or by telephone or facsimile no later than the next business day. Notifications in person or by telephone shall be confirmed by written notice addressed and mailed to the municipality within three business days of the telephone notice. If the discharge of prohibited materials emanates from a commercial or industrial establishment, the owner or operator of such establishment shall also retain an on-site written record of the discharge and the actions taken to prevent its recurrence. Such records shall be retained for at least three years.

SECTION 13. ENFORCEMENT.

13.1 Notice of Violation.

When the municipality's SMO finds that a person has violated a prohibition or failed to meet a requirement of this law, he/she may order compliance by written notice of violation to the responsible person. Such notice may require without limitation:

13.1.1 The elimination of illicit connections or discharges;

13.1.2 That violating discharges, practices, or operations shall cease and desist;

13.1.3 The abatement or remediation of stormwater pollution or contamination hazards and the restoration of any affected property;

13.1.4 The performance of monitoring, analyses, and reporting;

13.1.5 Payment of a fine; and

13.1.6 The implementation of source control or treatment BMPs. If abatement of a violation and/or restoration of affected property is required, the notice shall set forth a deadline within which such remediation or restoration must be completed. Said notice shall

further advise that, should the violator fail to remediate or restore within the established deadline, the work will be done by a designated governmental agency or a contractor and the expense thereof shall be charged to the violator.

13.2 Penalties

In addition to or as an alternative to any penalty provided herein or by law, any person who violates the provisions of this local law shall be guilty of a violation punishable by a fine not exceeding three hundred fifty dollars (\$350) or imprisonment for a period not to exceed six months, or both for conviction of a first offense; for conviction of a second offense both of which were committed within a period of five years, punishable by a fine not less than three hundred fifty dollars nor more than seven hundred dollars (\$700) or imprisonment for a period not to exceed six months, or both; and upon conviction for a third or subsequent offense all of which were committed within a period of five years, punishable by a fine not less than seven hundred dollars nor more than one thousand dollars (\$1000) or imprisonment for a period not to exceed six months, or both. However, for the purposes of conferring jurisdiction upon courts and judicial officers generally, violations of this local law shall be deemed misdemeanors and for such purpose only all provisions of law relating to misdemeanors shall apply to such violations. Each week's continued violation shall constitute a separate additional violation.

SECTION 14. APPEAL OF NOTICE OF VIOLATION.

Any person receiving a Notice of Violation may appeal the determination of the SMO to the **(City Council/Town Board/Village Board of Trustees)** within 15 days of its issuance, which shall hear the appeal within 30 days after the filing of the appeal, and within five days of making its decision, file its decision in the office of the municipal clerk and mail a copy of its decision by certified mail to the discharger.

SECTION 15. CORRECTIVE MEASURES AFTER APPEAL.

- 15.1 If the violation has not been corrected pursuant to the requirements set forth in the Notice of Violation, or, in the event of an appeal, within 5 business days of the decision of the municipal authority upholding the decision of the SMO, then the SMO shall request the owner's permission for access to the subject private property to take any and all measures reasonably necessary to abate the violation and/or restore the property.
- 15.2 If refused access to the subject private property, the SMO may seek a warrant in a court of competent jurisdiction to be authorized to enter upon the property to determine whether a violation has occurred. Upon determination that a violation has occurred, the SMO may seek a court order to take any and all measures reasonably necessary to abate the violation and/or restore the property. The cost of implementing and maintaining such measures shall be the sole responsibility of the discharger.

SECTION 16. INJUNCTIVE RELIEF.

It shall be unlawful for any person to violate any provision or fail to comply with any of the requirements of this law. If a person has violated or continues to violate the provisions of this law, the SMO may petition for a preliminary or permanent injunction restraining the person from activities which would create further violations or compelling the person to perform abatement or remediation of the violation.

SECTION 17. ALTERNATIVE REMEDIES.

17.1 Where a person has violated a provision of this Law, he/she may be eligible for alternative remedies in lieu of a civil penalty, upon recommendation of the Municipal Attorney and concurrence of the Municipal Code Enforcement Officer, where:

17.1.1 The violation was unintentional

17.1.2 The violator has no history of previous violations of this Law.

17.1.3 Environmental damage was minimal.

17.1.4 Violator acted quickly to remedy violation.

17.1.5 Violator cooperated in investigation and resolution.

17.2 Alternative remedies may consist of one or more of the following:

17.2.1 Attendance at compliance workshops

17.2.2 Storm drain stenciling or storm drain marking

17.2.3 River, stream or creek cleanup activities

SECTION 18. VIOLATIONS DEEMED A PUBLIC NUISANCE.

In addition to the enforcement processes and penalties provided, any condition caused or permitted to exist in violation of any of the provisions of this law is a threat to public health, safety, and welfare, and is declared and deemed a nuisance, and may be summarily abated or restored at the violator's expense, and/or a civil action to abate, enjoin, or otherwise compel the cessation of such nuisance may be taken.

SECTION 19. REMEDIES NOT EXCLUSIVE.

The remedies listed in this law are not exclusive of any other remedies available under any applicable federal, state or local law and it is within the discretion of the authorized enforcement agency to seek cumulative remedies.

SECTION 20. ADOPTION OF LAW.

This law shall be in full force and effect 60 days after its final passage and adoption. All prior laws and parts of law in conflict with this law are hereby repealed.

PASSED AND ADOPTED this 12th day of December, 2005, by the following vote: unanimous

Item 11: Land Use Controls and Regulatory Resources

Village of Ardley 11/6/2005

CHECKLIST 1. LAND USE CONTROLS AND REGULATORY RESOURCES

Use this checklist to assess local land use controls and related resources for Construction Post-Construction Stormwater Management. Consult Table 3 (page 3) for ways to adapt the Sample Stormwater Management Local Law to the local regulatory environment.

Local Laws, Regulations, and Resources	Yes	No	Guidance Manual Reference
Does your municipality have a subdivision regulation?	<input checked="" type="checkbox"/>		Pages 11, 13, 27-28
Are developers required to submit a Stormwater Pollution Prevention Plan (SWPPP) with a subdivision application?	<input checked="" type="checkbox"/>		Pages 9, 18-19, 28
Does your municipality have a planning board?	<input checked="" type="checkbox"/>		Page 15
Does your municipality have a site plan regulation?	<input checked="" type="checkbox"/>		Pages 12, 27-28
Are developers required to submit a stormwater site with their site plan application?	<input checked="" type="checkbox"/>		Pages 9, 18, 28
Does your municipality have a zoning ordinance?	<input checked="" type="checkbox"/>		Pages: Sample Law
Does the zoning ordinance require submission of a SWPPP with application for special-use permits, variances or zoning changes?	<input checked="" type="checkbox"/>		Pages 9, 19, 38
Does your municipality issue building permits?	<input checked="" type="checkbox"/>		Page 14
Is there a building inspector/code enforcement officer?	<input checked="" type="checkbox"/>		Pages 15, 39
Are code enforcement officers, EBA and Planning Board members reviewing stormwater plans or prepared to review them?	<input checked="" type="checkbox"/>		Pages 1, 16, 14-15, 27
Does your municipality have a Conservation Advisory Council or other environmental committee?		<input checked="" type="checkbox"/>	Page 11
Are environmental committee members trained to review stormwater plans?		<input checked="" type="checkbox"/>	Pages 12, 34-35, 37
Does your municipality have an erosion and sediment control or stormwater management law?	<input checked="" type="checkbox"/>		Pages 9, 17, 28
Does your municipality have a stormwater drainage district?	<input checked="" type="checkbox"/>		Pages 13, 35

working to establish IMA's for this purpose

CHECKLIST 1. WHAT YOUR ANSWERS MEAN

First three questions in gray boxes - For answers to all three questions mean your municipality can adopt the Sample Stormwater Management Local Law without modification. Any No answer indicates the sample law must be adapted to fit local circumstances (See Table 3).

Last four questions in gray boxes - Any Yes answer means a program is in place that can be used to help MANAGE STORMWATER. Table 3 (last page of handout) shows how to integrate some of these programs with the stormwater management program.

Questions in white boxes - Any Yes answer means that a procedure is in place that can be used for accepting and reviewing stormwater plans. No answers indicate areas to address as you develop stormwater MANAGEMENT PROCEDURES.

Village of Ardley 11/6/2005

CHECKLIST 2. PROGRAMS SUPPORTING STORMWATER MANAGEMENT

These questions identify laws and rules, staff and resources that can contribute to successful stormwater management. References lead to discussions of each topic in this manual.

Local Programs, Staff or Information Resource	Yes	No	Guidance Manual Reference
Natural Resource Protection (Integrate with Stormwater Program)			
Does your municipality have restrictions on filling and grading?	<input checked="" type="checkbox"/>		Page 13
Does your municipality have floodplain or wetlands controls?	<input checked="" type="checkbox"/>		Page 14
Does your municipality have watersheds, stream corridor or riparian buffer requirements?	<input checked="" type="checkbox"/>		Page 14
Does your municipality have a zoning overlay or other special district?	<input checked="" type="checkbox"/>		Page 12
Technical Staff with Important Stormwater Roles			
Does your municipality have a Municipal Engineer/Engineering Department?	<input checked="" type="checkbox"/>	<input checked="" type="checkbox"/>	Page 16, 34
Does your municipality have a Building Inspector/Building Department?	<input checked="" type="checkbox"/>		Pages 17, 20
Does your municipality have a Municipal Attorney/Legal Department?	<input checked="" type="checkbox"/>	<input checked="" type="checkbox"/>	Pages 16, 26
Does your municipality have a Public Works Department?	<input checked="" type="checkbox"/>		Pages 15, 27-28
Does your municipality have a Municipal Planner/Planning Department?		<input checked="" type="checkbox"/>	Page 16
Community Resources for Stormwater Management			
Has your municipality prepared a natural resource inventory?		<input checked="" type="checkbox"/>	Page 21
Does your municipality have a citizen participation program?	<input checked="" type="checkbox"/>		Pages 31-34
Does your municipality share programs with other jurisdictions?	<input checked="" type="checkbox"/>		Page 20
Does your municipality operate any stormwater infrastructure?	<input checked="" type="checkbox"/>		Pages 14, 20, 37, 38
Does your municipality have a Comprehensive Plan or Master Plan?		<input checked="" type="checkbox"/>	Page 71; Appendix 2
Does the plan mention and provide for stormwater needs?	<input checked="" type="checkbox"/>	<input checked="" type="checkbox"/>	Appendix 2

* p/t consultant only

CHECKLIST 2. WHAT YOUR ANSWERS MEAN

For answers indicate existing programs that support and reinforce stormwater management goals. Take these resources into account in program design and give them a role in implementation.

No answers identify approaches that the locality may want to consider adopting, or expertise that an NIS4 may need to obtain for successful stormwater management.

Item 12: Stormwater Runoff Issues

Date	Address	Report Method	Problem	Resolution
7/18/2005	15 Grandview Ave	“Hotline”	Runoff from Eastern Drive	DPW
8/8/2005	16 Western Dr	“Hotline”	Driveway runoff	DPW
10/19/2005	12 & 13 Western Dr	Stenciling Team	Clogged storm drain	DPW, Vac truck (contractor)
12/20/2005	39 Heatherdell Rd	“Hotline”	Backyard runoff	Building Inspector (Property Maintenance Law)
1/20/2006	10 Prospect Ave	“Hotline”	Icy road	DPW
1/30/2006	37 Ridge Rd	“Hotline”	Icy road in right-of-way	Building Inspector, DPW



Village of Ardsley

Department of Public Works

Manual of Operations and Maintenance Log

(Phase II Stormwater Management Program)

<u>Catch Basin Head Cleaning</u> <u>Routes: A = Ashford Ave, H = Heatherdell Rd</u> <u>EV = Entire Village</u>		<u>Bulk Roadside Cleaning</u> <u>Route: Entire Village</u> <u>(litter and small brush)</u>	<u>Bulk Leaf Clean-up</u>	
ROUTES	DATE	DATE	ROUTE	DATE
A	4/5/2005	4/12/2005	Heatherdell lower	5/17/2005
H	4/7/2005	4/26/2005	Heatherdell upper	5/20/2005
EV	5/6/2005	5/17/2005	Ashford upper	6/7/2005
A	6/3/2005	6/7/2005	Ashford lower and Ashford Park	10/21/2005
H	6/6/2005	6/27/2005	Legion Drive and Bramblebrook	12/1/2005
EV	8/30/2005	7/7/2005	Heatherdell	12/2/2005
H	9/15/2005	7/19/2005	Ridge Rd, Carriere and Fuller	12/8/2005
A	9/16/2005	8/11/2005	Entire Village	12/29/2005
A	10/13/2005	9/1/2005		
H	10/14/2005	10/12/2005		
EV	10/21/2005	11/9/2005		
EV	10/26/2005 (wind storm)	12/8/2005		
EV	10/27/2005	1/4/2006		
EV	10/28/2005	1/19/2006 (wind storm)		
A	11/4/2005	1/20/2006		
H	11/7/2005	1/26/2006		
A	11/10/2005			
H	11/11/2005			
A	11/17/2005			
H	11/18/2005			
A	11/28/2005			
H	11/29/2005			
EV	12/14/2005			
EV	12/30/2005			
EV	1/13/2006			
EV	1/19/2006 (wind storm)			
EV	1/20/2006			
EV	1/21/2006			
EV	1/31/2006			
EV	2/1/2006			

Catch Basin Internal Clean-out

LOCATION	# of BASINS	DATE
Legion Drive (rear of Ambulance Building)	2	3/29/2005
Felix and Carriere	1	4/5/2005
Almena Ave	3	4/8/2005
Prospect and Larchmont	2	4/12/2005
Lincoln and Larchmont	2	4/19/2005
Grandview and Eastern	1	4/29/2005
Bramblebrook and Augustine	2	5/9/2005
Heatherdell and Concord	2	5/24/2005
Beacon Hill and Heatherdell	1	5/26/2005
Concord Rd	2	9/19/2005
Abington and Kensington	2	10/11/2005
Heatherdell and Capt Honeywell	1	10/28/2005
Park Ave	2	12/22/2005
Park and Orlando	2	1/5/2006

Street Sweeping

Routes: HN = North of Heatherdell Rd

HS = South of Heatherdell Rd

AN = North of Ashford Ave

AS = South of Ashford Ave

DB = Downtown Business District, Route 9A/Center St

DATE	ROUTES	DATE	ROUTES
4/6/2005	HN, DB	8/31/2005	AN, DB
4/13/2005	HS, DB	9/7/2005	AS, DB
4/27/2005	AN, DB	9/14/2005	HN, DB
5/4/2005	AS, DB	9/21/2005	HS, DB
5/11/2005	HN, DB	9/28/2005	AN, DB
5/18/2005	HS, DB	10/5/2005	AS, DB
5/25/2005	AN, DB	10/12/2005	HN, DB
6/1/2005	AS, DB	10/19/2005	HS, DB
6/15/2005	HN, DB	10/26/2005	AN, DB
6/22/2005	HS, DB	11/2/2005	AS, DB
6/29/2005	AN, DB	11/9/2005	HN, DB
7/9/2005	AS, DB	11/16/2005	HS, DB
7/16/3005	HN, DB	11/23/2005	AN, DB
7/18/2005	HN, HS, AN, AS, DB (storm clean-up)	11/30/2005	AS, DB
7/23/2005	HN, DB	12/7/2005	HN, DB
7/30/2005	HS, DB	1/25/2006	HS, DB
8/3/2005	AN, DB	2/1/2006	AN, DB
8/10/2005	AS, DB	2/9/2006	AS, DB
8/17/2005	HN, DB		
8/24/2005	HS, DB		

Road Repair

Location (st/cross st)	Material	Amount (tons)	Date of use
Heatherdell – Ridge - Legion	7 F Top	2	3/14/05
Heatherdell – Hillcroft – Beacon Hill		2	3/15/05
Northside Ashford		3	3/16/05
Northside Heatherdell		3	4/6/05
Ashford Park		3	4/6/05
Farm Rd - Exeter		3	4/11/05
Abington - Cross		3	4/11/05
Various pot holes		2	5/5/05
Various pot holes		3	6/17/05
Exeter - Cross		6	7/19/05
Lakeview - Bramblebrook		7	7/19/05
Eastern - Grandview		300	8/9/05
Grandview – Wilmoth – Mt View		200	8/9/05
Shady (north)		65	8/9/05
Highland Dr		200	8/9/05
Heatherdell – Chimney Pot - Revolution		500	8/9/05
Various pot holes		2	9/9/05
Various pot holes		3	10/5/05
Ridge - Shady		65	10/20/05
Various curbing		2	10/21/05
Various curbing		3	10/27/05
Various curbing		2	11/7/05
Beacon Hill - Ridge		2	11/28/05
Bride St and lot		2	11/28/05
Various pot holes and curbing		10	1/1/06 to 3/10/06

Road Salt Application

Village (total) or Neighborhood (name)	Amount (tons)	Condition	Date applied
Various ice patches	0.5	Ice	3/9/05 (AM)
Village	3	Sleet and ice	3/9/05 (PM)
Village	25	5" snow	3/10/05
Village	20	3" snow	3/23/05
Village	30	3" snow	3/24/05
Various ice patches	1	2" snow	12/4/05
Various ice patches	1	Ice	12/5/05
Village	30	2" snow	12/6/05
Various ice patches	0.5	Ice	12/7/05
Village	45	8" snow	12/9/05
Various ice patches	0.25	Ice	12/12/05
Village	35	Sleet, freezing rain	12/15/05
Various ice patches	1	Ice	12/16/05
Village	30	2" snow	12/31/05
Various ice patches	0.5	Ice	1/3/06
Village	25	2" snow	1/4/06
Village	35	2" snow and ice	1/14/06
Village	20	2" snow	1/15/06
Village	19	1" snow	1/23/06
Village	40	22" snow	2/11/06
Village	45	22" snow	2/12/06
Village	10	22" snow	2/13/06
Springwood and Riverview	3	Water tower leak (frozen)	2/19/06
Village	50	5" snow	3/2/06
Village	40	Mop up	3/3/06

Incident Report

Location (st/cross st)	Description (water main, sewage)	Date incident	Repair (DPW or other)	Date repaired
Rte 9A – Madaba Deli	Sewer Blockage	3/20/05	Greenburgh	3/20/05
4 Cross Rd	Sewer Blockage	3/22/05	Greenburgh	3/22/05
694 Saw Mill River Rd	Sewer Blockage	3/28/05	Greenburgh	3/28/05
694 Saw Mill River Rd	Sewer Blockage	3/31/05	Greenburgh	3/31/05
Prospect - Larchmont	Blocked Storm Drain	4/18/05	Fred Cooke and Sons	4/18/05
31 Hilltop	Sewer Blockage	4/18/05	Fred Cooke and Sons	4/18/05
4 Western	Sewer Blockage	4/22/05	Ardsley DPW	4/22/05
Fairmont (off Lincoln)	Sewer Blockage	5/2/05	Greenburgh	5/2/05
4 Western	Sewer Blockage	5/27/05	Ardsley DPW	5/27/05
27 Bonaventure	Sewer Blockage	6/11/05	Greenburgh	6/11/05
102 Ridge	Water Line Break	7/14/05	Ardsley DPW	7/15/05
4 Western	Sewer Blockage	9/20/05	Ardsley DPW	9/20/05
Heatherdell – Maj. Appleby - Victoria	Sewer Blockage	10/12/05	Greenburgh	10/12/05
Riverview (dead end)	Sewer Blockage	11/10/05	Greenburgh	11/12/05
4 Western	Sewer Blockage	11/17/05	Ardsley DPW	11/17/05
Springwood - Riverview	Water Tower Leak	2/19/05	United Water	2/19/05

Vehicle Maintenance

Vehicle type	#	Wash or Maintenance (brief description)	Date serviced
Packer	14	Fuel tank bracket – fuel tank 60 gal	3/3/05
Pick-up	11	Front wheel bearings	3/3/05
Packer	12	Install 2 rear tires	3/3/05
Dump	1	Wash and grease	3/14/05
Dump	2	Wash and grease	3/14/05
Dump	3	Wash and grease	3/14/05
Pick-up	6	Wash and grease	3/14/05
Pick-up	10	Wash and grease	3/14/05
Payloader		Steam clean and grease	3/15/05
Crown Vic	95	Install new battery	3/15/05
Crown Vic	97	Oil and filter – fluids – balance tires	3/21/05
Packer	4	Routine maintenance	3/21/05
Jeep		Oil and filter, wash and lube	3/21/05
Dump	3	Steam clean – grease and undercoat	3/30/05
Dump	1	Steam clean – grease and undercoat	3/31/05
Pick-up	11	Fuel injector pump	4/4/05
Pick-up	9	Bearing in drive train-U joint transmission-grease and lube	4/7/05
Packer	14	Wash and grease	4/9/05
Packer	12	Wash and grease	4/9/05
Dump	1	Wash and grease – new hydraulic hose	4/18/05
Crown Vic	Chief	Oil and filter – fluids – balance tires	4/20/05
Packer	4	Brake chamber – grease fittings	4/20/05
Crown Vic	95	Oil and filter – grease and lube	4/25/05
Crown Vic	94	Oil and filter – grease and lube	4/25/05
Crown Vic	98	Oil and filter – grease and lube	4/25/05

Crown Vic	96	Oil and filter – grease and lube	4/25/05
Highway	1	Wash and wax	5/9/05
Truck	14	Wash and wax	5/9/05

Vehicle type	#	Wash or Maintenance (brief description)	Date serviced
Truck	12	Wash and wax	5/9/05
Highway	1	Change oil and undercoat chasis	5/10/05
Packer	8	Change oil and grease rear	5/12/05
Crown Vic	96	Fix leak in radiator	5/16/05
Payloader		Check hydraulics and grease	5/17/05
Ladder Truck		Check hydraulics and grease	5/17/05
Pick-up	10	Oil and filter, transmission fluid and filter, undercoat chasis, seal and prime bed under spreader	5/19/05
Pick-up	9	Pull and replace radiator, hoses and coolant	5/23/05
Ladder Truck		Replace oil pan due to hole	5/31/05
Packer	8	Replace oil pan due to corrosion	6/3/05
Packer	4	Oil, filter, hydraulic and lube	6/8/05
Packer	12	Oil, filter, hydraulic and lube	6/9/05
Pick-up	11	New transmission and coolant lines – replace all fluids and seals	6/13/05
Payloader		Rebuild check valve, drain and flush all lines and add fluids	6/14/05
Pick-up	7	New brakes, tires and transmission lines	6/22/05
Crown Vic	95	Routine maintenance	6/24/05
Crown Vic	98	Routine maintenance	6/27/05
Senior Bus		Routine maintenance	6/28/05
Crown Vic	96	Routine maintenance	6/28/05
Crown Vic	94	Routine maintenance	6/29/05
Dump	1	New exhaust system	6/30/05
Crown Vic	95	Routine maintenance	7/1/05
Crown Vic	93	Routine maintenance	7/1/05
Senior Bus		Wash – routine check	7/5/05

Pick-up	6	Routine service – new brakes	7/5/05
Pick-up	11	New fuel pump – injector feeder pump – air and hydraulic filter	7/6/05
Ladder Truck		NYS inspection	7/7/05

Vehicle type	#	Wash or Maintenance (brief description)	Date serviced
Crown Vic	Insp	Routine maintenance	7/8/05
Crown Vic	93	Brakes, rotors	7/8/05
Highway	1	Routine service	7/14/05
Packer	14	Repair hydraulic hose	7/18/05
Crown Vic	94	Replace serpentine V belt	7/22/05
Packer	15	Repair AC compressor	7/22/05
Crown Vic	99	Replace serpentine belt and tensioner	7/25/05
Pick-up	9	Replace exhaust system	7/26/05
Packer	8	Repair diesel leak	7/27/05
Dodge Intrepid	Det	Install new alternator, idler pulley, AC belt and pulley, blower motor module, new battery terminal	8/1/05
Pick-up	11	Routine maintenance, new front and rear brakes, springs, hub seals, install new exhaust pipe	8/9/05
Pick-up	7	Replace main bearing	8/10/05
Dump	5	Grease and lube entire vehicle	8/10/05
Packer	12	Routine maintenance, change evaporator filter	8/19/05
Packer	8	Routine maintenance and grease	8/20/05
John Deere Tractor		Remove engine and steam clean, install new starter, 4 motor mounts and belts, replace motor and paint engine assembly	8/29/05
Pick-up	6	Wash and grease	9/3/05
Pick-up	7	Wash and grease	9/3/05
Pick-up	9	Wash and grease	9/3/05
Pick-up	11	Wash and grease	9/3/05
Packer	12	Install new hoses rear tailgate	9/4/05
Packer	12	Grease entire new section	9/7/05

Payloader		Install new serpentine V belt, grease entire machine, steam clean engine	9/12/05
Snow Plow		Steam clean, derust, prime and paint	9/13/05

Vehicle type	#	Wash or Maintenance (brief description)	Date serviced
Crown Vic	94	Oil and filter change	9/15/05
Crown Vic	97	Oil and filter change	9/16/05
Highway	1	Oil and filter change	9/17/05
Pick-up	9	Remove old body – steam clean, derust and prime entire chassis	9/19/05
Packer	12	Repair holes in oil pan	9/20/05
Pick-up	7	Routine maintenance	9/28/05
Pick-up	9	Install new fuel filter and fuel injection pump	10/5/05
Crown Vic	99	Routine maintenance	10/6/05
Dump	5	Install new lines to body and repair control box leak	10/7/05
Ladder Truck		Routine maintenance	10/11/05
Packer	12	Replace hydraulic hoses and fluid, steam clean entire truck	10/12/05
Crown Vic	95	Routine maintenance	10/12/05
Pick-up	9	Routine maintenance	10/12/05
Packer	14	Repair hydraulic leak	10/24/05
Senior Bus		Routine maintenance	10/27/05
Pick-up	11	Replace thermostats and antifreeze	11/2/05
Crown Vic	94	Brakes and rotors	11/2/05
Packer	4	Grease entire truck, replace steering box pressure hose	11/4/05
Packer	5	Replace hydraulic hose and fluid	11/4/05
Packer	8	Wash and grease	11/10/05
Packer	12	Wash and grease	11/10/05
Packer	14	Wash and grease	11/10/05
Packer	15	Wash and grease	11/10/05
Dodge Intrepid	Det	Routine maintenance, install 2 new lower rotor arms and ball joints	11/18/05

Highway	1	Routine maintenance, undercoat chassis	11/23/05
Pick-up	7	Repair transmission fluid line and adjust transmission, grease and lube	11/28/05

Vehicle type	#	Wash or Maintenance (brief description)	Date serviced
Pick-up	10	Repair hose and hydraulic line, routine maintenance	12/5/05
Pick-up	11	Routine maintenance, new front and rear brakes	12/13/05
Crown Vic	97	Routine maintenance	12/15/05
Plows and Spreaders		Steam clean, grease and lube	12/15/05
Crown Vic	98	Routine maintenance	12/21/05
Pick-up	10	Change transmission oil and filter, install new governor and transducer	12/21/05
Pick-up	10	Install new front end bearing and hub assembly, new front brakes and V-joint for drive axel, new bushing kit for calipers	1/6/06
Pick-up	11	Routine maintenance, steam clean engine and wash body, install new U joint rear of drive shaft, grease and lube	1/10/06
Crown Vic	Chief	Routine maintenance, resurface rear rotors	1/11/06
Dump	3	Install new power steering hose and fill with hydraulic fluid	1/11/06
Pick-up	6	Wash and grease	1/12/06
Pick-up	9	Wash and grease	1/12/06
Pick-up	10	Wash and grease	1/12/06
Pick-up	11	Wash and grease	1/12/06
Dump	1	Wash and grease	1/12/06
Dump	2	Wash and grease	1/12/06
Dump	3	Wash and grease	1/12/06
Payloader		Wash and grease	1/12/06
Packer	14	Grease and lube entire rig	1/13/06
Crown Vic	98	Remove and repair exhaust manifold – resurface front brake rotors	1/14/06
Packer	8	Install new O-rings top of transmission for cooling hoses, new	1/23/06

		filter in water separator, remove rust from floor panel and repaint	
Packer	12	Install new alcohol evaporator for air brakes	1/30/06
Packer	8	Install new alcohol evaporator for air brakes	1/30/06

Vehicle type	#	Wash or Maintenance (brief description)	Date serviced
Crown Vic	94	Routine maintenance including transmission fluid, filter and seal, replace gaskets on exhaust manifold	2/206
Highway	1	Routine maintenance and tune up	2/2/06
Pick-up	10	Install new seals and pads rear brakes – new air filter	2/3/06
Pick-up	11	Install new front driving axel shaft and front stabilizing bar and new blower motor	2/3/06
Dump	2	Steam clean entire rig, remove rear left axel shaft, replace axel and 90W oil	2/10/06
Pick-up	9	Install new water pump, change engine coolant	2/15/06
Pick-up	10	2 new belts hydraulic pump	2/215/06
Pick-up	11	Install new 4 wheel drive switch in transmission	2/15/06
Packer	14	Adjust rear brakes and install, wash, grease and lube	2/15/06
Packer	15	Wash, grease and lube	2/24/06
Dump	5	Routine maintenance, wash, grease and lube	2/27/06
Dump	5	Install new chain and piston on plow assembly	3/1/06
Crown Vic	95	Routine maintenance and road test	3/1/06
Payloader		Grease and lube all fittings	3/2/06
Pick-up	6	Wash and grease	3/3/06
Pick-up	9	Wash and grease	3/3/06
Pick-up	10	Wash and grease	3/3/06
Pick-up	11	Wash and grease	3/3/06
Dump	1	Wash and grease	3/3/06
Dump	2	Wash and grease	3/3/06
Dump	3	Wash and grease	3/3/06
Dump	5	Wash and grease	3/3/06

Packer	8	Routine maintenance, grease and lube	3/7/06
Packer	15	Steam clean	3/7/06

Vehicle type	#	Wash or Maintenance (brief description)	Date serviced
Packer	14	Remove wheels, brakes and conisters and rear axel, replace conisters and S-gears, grease and lube entire truck	3/9/06
Dump	1	Steam clean and remove chain and belts from spreader	3/10/06