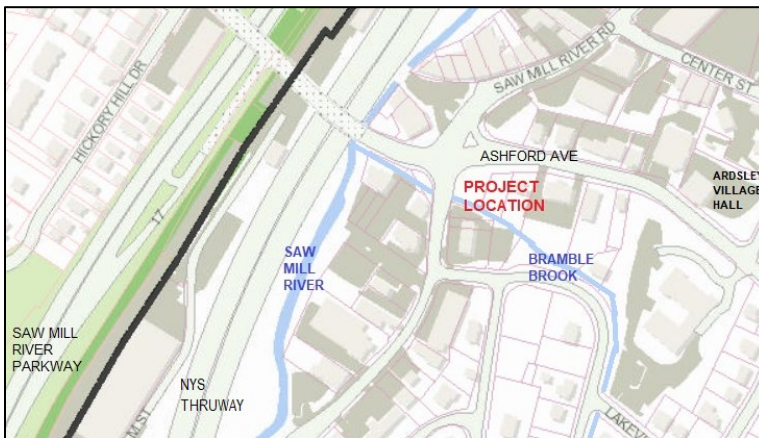
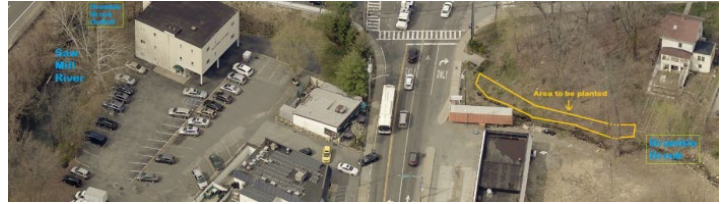




Trees for Tribs
Bramble Brook
Village of Ardsley



The Bramble Brook is a small tributary of the Saw Mill River which is in turn a tributary of the Hudson River. Helping to keep both of these waterbodies clean is an important goal of VofA SW Management and NYS DEC Hudson River Estuary (HRE) program. Our planting project protects the Bramble Brook stream bank and also provides aesthetic upgrades. The planting is just south of Silliman Park along the Bramble Brook, at the corner of Route 9A and Ashford Avenue.



- ❑ **Plant Date:** October 19, 2019
- ❑ **Planting Area:** 3000 sq ft
 - **Sun Exposure:** Sun, Partial shade
 - **Wetness:** moist to dry
- ❑ **Length along stream:** 100 ft
- ❑ **Width:** 30 ft
- ❑ **Original Vegetation:** Grass, scattered mature trees (Norway, Sugar & Silver Maples, Box Elder)



Planting Summary:

- ❑ **Total plants:** 100
 - **Small Trees:** 8 (distributed throughout with a minimum of 12 ft between trees)
 - **Shrubs:** 92 (5-7 ft spacing)

Planting Day October 19, 2020



Layout

**Highway
digging**



Orientation



**Volunteers
digging**



Planting



Weed mats



More weed mats

**Visit from
Tim Lamorte,
The
Rivertowns
Enterprise**



**Installing the
Trees for Tribes
sign**



Thank you!!!

Volunteers

E. Bingul
A. Chiu
J. DeVito
M. Hart,
A. Kracht
J. Meng
S. Meng
P. Rodwick

VofA Highway Dept

Foreman Rick Thompson
Victor Bailey
Joe Corvino
Mark Florkowski

VofA Government

Tr Steve Edelstein
PB Susan Jainchill

CEAC

Eda Kapsis
Owen Kapsis
Asha Bencosme

AHS Env Task Force

Tara Bandman, Advisor
A. Arif
M. Murthy
J. Tang

NYS DEC Trees for Tribs HRE

Beth Roessler
Dave Hendler

Updates

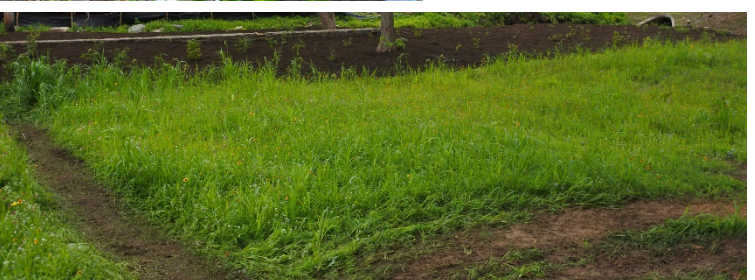


5/12/2020

6/2/2020



7/15/2020



North side wildflower meadow

Meadow close up

Plants (8/11/2020)



Eastern Redbud



Flowering Dogwood



Northern Bayberry



Serviceberry



Nannyberry



Black Chokeberry



Pussy Willow



Sweet Pepperbush



Dwarf Sand Cherry



Red Osier Dogwood

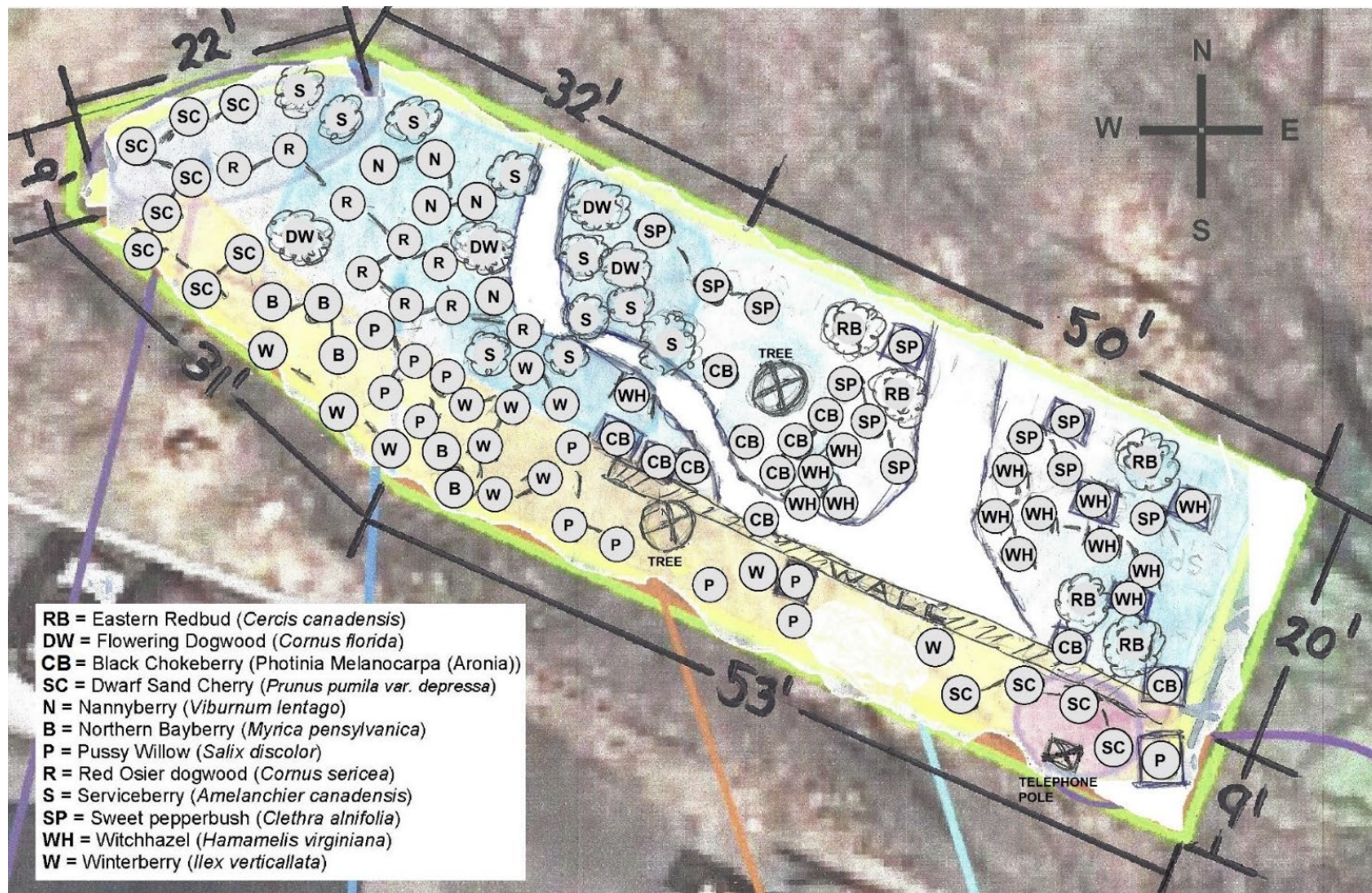


Witchhazel



Winterberry

Layout



For more information:

Hudson Estuary Trees for Tribs Replanting the Streams of the Hudson Valley

<https://www.dec.ny.gov/lands/43668.html>