

MS4 Annual Report Form

This report is being submitted for the reporting period ending March 9,

2	0	1	9
---	---	---	---

If submitting this form as part of a joint report on behalf of a coalition leave SPDES ID blank.

Name of MS4/Coalition

Village of Ardsley

SPDES ID

N	Y	R	2	0	A	3	1	6
---	---	---	---	---	---	---	---	---

Appendix

<u>Page</u>	<u>Item</u>
1	Ardsley Newsletter Articles
2 - 3	Literature and Item Distribution Log
4 - 7	Local Newspaper Articles
8	Scout Clean up, Ardsley Cares Clean up & Great SMR Clean up
9	Enviroscape Program and Ardsley Middle School SW Program
10	Recycle Your Recycling Bin II Bicentennial Park Planting: AHS Env Sci Club & Brownies
11	Ardsley BBQ
12 - 20	Outfall Inspection Sheets 3/2018 – 3/2019
21 – 39	Department of Public Works Log Sheets 3/2018 – 3/2019

MS4 Annual Report Form

This report is being submitted for the reporting period ending March 9,

2	0	1	9
---	---	---	---

If submitting this form as part of a joint report on behalf of a coalition leave SPDES ID blank.

Name of MS4/Coalition

Village of Ardsley

SPDES ID

N	Y	R	2	0	A	3	1	6
---	---	---	---	---	---	---	---	---

Ardsley Villager Fall 2018

Stormwater Update >>>

To Prune or Not to Prune...

Not yet! A tree is the best stormwater practice. The roots take up water, and the leaves send water back to the atmosphere by transpiration. They prevent soil erosion, but unhealthy trees can damage property so we must care for them. Right now, early fall season, trees are still storing energy for the winter. In general, it is best to wait until the dormant period, winter and early spring, to prune if you must. These links give information on how and when to prune trees:

http://www.ardsleyvillage.com/sites/ardsleyny/files/u66/cornell_coop_ext_how_to_prune_a_tree.pdf

http://www.ardsleyvillage.com/sites/ardsleyny/files/u66/usda_tree_pruning_guide.pdf

Pruning may have to wait, but invasive vine removal is always important. The backyard evergreen in the photo will soon be lost to invasive vines, which can be seen as the large-leafed menace attacking the tree. Care should be taken when removing invasive vines. It is best to get help from a horticulture professional, so that the vines can be identified and properly removed. The link for horticultural help at Cornell Coop Ext in Elmsford is below, and there is a link showing some common invasive vines:

<http://westchester.cce.cornell.edu/horticulture-environment>

http://www.ardsleyvillage.com/sites/ardsleyny/files/u66/smrc_vine_guide.pdf



Even better, take good care of your trees by having a professional tree care service assess and do periodic maintenance of these very valuable “residents” on your property.

Composting our food scraps is another great way to keep our runoff water clean. Less food waste in our garbage means less pathogen runoff from garbage dumps. The Town of Greenburgh has a wonderful food scrap collection program at Veterans Park, and more info can be found at the Town website at this link:

<http://www.greenburghny.com/Cit-e-Access/news/?TID=10&NID=45568>

A new commercial composting facility will soon be located right here in Westchester, so food scraps will not have to be hauled all the way to Ulster County. Sustainable Materials Management expects to open their facility in Cortlandt NY by November 2018.

Thank you for stopping by at the Stormwater Outreach table at the Village of Ardsley BBQ! Thanks for making our water cleaner –

Lorraine Kuhn, Stormwater Coordinator



Ardsley Garden Club >>>

Ardsley Garden club participated in Saturday's Ardsley's Barbeque Day at Pascone Park. The public enjoyed buying baked goods, daffodil bulbs for planting, houseplants and a raffle. A few people asked to join the club--there's always room for more people interested in gardening and floral arranging. The pollinator garden at the Ardsley Public Library is a successful continuing project where volunteers and our members work hard to maintain the garden for the enjoyment of the community and for butterflies and bees. If new residents want to join the club or want more information please call Linda Keil (914)693-6840. The OKTOBERFEST dinner will be held on Sunday November 4th at 4-7pm at the Dobbs Ferry Women's Club (54 Clinton Ave.).



MS4 Annual Report Form

This report is being submitted for the reporting period ending March 9,

2	0	1	9
---	---	---	---

If submitting this form as part of a joint report on behalf of a coalition leave SPDES ID blank.

Name of MS4/Coalition

Village of Ardsley

SPDES ID

N	Y	R	2	0	A	3	1	6
---	---	---	---	---	---	---	---	---

Literature and Item Distribution Log (3/9/2018 to 3/9/2019)

Item	Village Hall	Library	AMS Env Program	AHS Env Sci mtg	Enviro-scape Program	Recycle Your Recy Bin II	Ardsley BBQ	Outfall Testing Team	Business Outreach	Great SMR Cleanup
"Soln to Poll" (EPA)	3	1								
Org Lawn Care (Grassroots)	5	1								
Aquatic Invasives (NYSDEC)		1								
"Backyd Compost" (County Planning)	2					34				3
LELENY.org handout	4								15	
SW Regs & Construc (NYSDEC)	2									
"Lawn Pesticides" (Cit Camp Env)	7									
"Bees in Crisis" (EcoBeneficial)										
"Planting Guide" (EcoBeneficial)										
Go Native U (SUNY WCC)										
"Green Lawn Blue Water" (LWV)										
HAB Notice (NYSDEC)	3	4								
Bronx River Alliance Map										
"Go Native" guide (County Parks)	3					32				2
"Step by Step" (West County)	1									
"Dogs & HABs" (NY Sea Grant Org)										
Greenburgh Composting Info						30	5			
Zero Phosphorus (NYSDEC)							4			

MS4 Annual Report Form

This report is being submitted for the reporting period ending March 9,

2	0	1	9
---	---	---	---

If submitting this form as part of a joint report on behalf of a coalition leave SPDES ID blank.

Name of MS4/Coalition

Village of Ardsley

SPDES ID

N	Y	R	2	0	A	3	1	6
---	---	---	---	---	---	---	---	---

	Village Hall	Library	AMS Env Program	AHS Env Sci mtg	Enviro-scape Program	Recycle Your Recy Bin II	Ardsley BBQ	Outfall Testing Team	Business Outreach	Great SMR Cleanup
Item										
Recycling Bins (VofA SW)						102				
"Hud Riv Fish" (NYSDOH)	1									
"Clean Water" bookmarks (EPA)										
"When It Rains" bookmarks (HRE)					162					
Aq Restor bkmrk (County Planning)										
Pet Biobaggies (VofA SW)	31	47					21			
SW Reference Cards (VofA SW)			71	11			26			10
Outfall Testing Letter (VofA SW)								4		
Great SMR Cleanup (SMR Coalition)										8
SW Posters (County Planning)										
H2OK buttons (County Planning)							7			
SW Notepads (County Planning)							16			
SW Sticker Sheets (County Planning)							7			
SW Cartoon Magnet (VofA SW)										
SW Magnet (County Planning)										
SW Bumper Sticker (SMR Coalition)	1	3								
"After the Storm" Video (EPA)										

MS4 Annual Report Form

This report is being submitted for the reporting period ending March 9, 2019

If submitting this form as part of a joint report on behalf of a coalition leave SPDES ID blank.

Name of MS4/Coalition Village of Ardsley

SPDES ID

N Y R 2 0 A 3 1 6

PAGE 12 — THE RIVERTOWNS ENTERPRISE
FRIDAY, APRIL 6, 2018

Points of View FROM THE EDITOR



Spring Cleaning

Spring started on March 20. Perhaps that hard to believe after the snow storm this past Monday and the possibility of snow this weekend.

Nevertheless, spring events fill the calendar for the remainder of this month and into May. Those events range from Little League parades, to a tree planting at Springhurst Elementary School in Dobbs Ferry on April 27 at 9 a.m., to the annual Spring Fest at Andrus on Hudson in Hastings on April 29 from 12:30 to 4:30 p.m.

While many events focus on fun, others involve spring cleaning, specifically of outdoor areas where trash accumulates during the other three seasons. Those events require a lot of volunteers to turn out and to haul that trash out of those areas. For some, that's fun. For others, it's not. Nonetheless, it's necessary.

For those willing to dedicate a hour or more to such an effort, the calendar includes three opportunities, starting with the Irvington Woods Spring Trail Cleanup on Saturday, April 14, at the O'Hara Nature Center, 170 Mountain Road. The cleanup will last from 9 a.m. to 1 p.m., with a trail art workshop from 10 a.m. to 1 p.m., and an apple grafting workshop at 1:15 p.m.

The following Saturday, April 21, is the annual Great Saw Mill River Cleanup organized by Groundwork Hudson Valley. That event, from 10 a.m. to 1 p.m., includes three locations off the Saw Mill River Parkway: Farragut Avenue in Hastings, Lawrence Street in Greenburgh, and Woodlands Lake in Irvington. There is also a cleanup at Bridge Street in Ardsley.

Finally, on Saturday, May 5, is the annual Riverkeeper Sweep, organized by the nonprofit organization dedicated to protecting the Hudson. The Sweep includes three locations in this area: Kinnally Cove, MacEachron Park, and River Glen Cove in Hastings from 9 to 11 a.m.; Scenic Hudson Park in Irvington from 9 a.m. to noon; and Waterfront Park in Dobbs Ferry from 10 a.m. to 1 p.m. (FYI: River Glen Cove is behind the Harvest on Hudson restaurant and the Tower Ridge Yacht Club).

For more information about each of these cleanups, visit theirvingtonwoods.org, www.groundworkhv.org, and www.riverkeeper.org. None of them require registering beforehand. The only requirement is a willing pair of hands and a durable pair of shoes.

PAGE 12 — THE RIVERTOWNS ENTERPRISE

FRIDAY, APRIL 27, 2018

Points of View FROM THE EDITOR



Above and Beyond

There were no awards handed out during the ninth annual Great Saw Mill River Cleanup on April 21. For those who volunteered at eight sites that Saturday, and at one site the following day, their reward was satisfaction.

Tons of trash was removed from the river and its banks between Elmsford and Yonkers, including Woodlands Lake in Irvington, Bridge Street in Ardsley, Lawrence Street in Greenburgh, and Farragut Avenue in Hastings.

In addition, volunteers pruned invasive vines that choked trees and crowded out native vegetation. That effort built upon the free-a-tree vine removal events held every fall and winter by Groundwork Hudson Valley, the nonprofit that organizes the Great Saw Mill River Cleanup.

In Hastings, between Farragut Avenue and Ravensdale Road, half a dozen volunteers went above and beyond the usual trash collection. Behind a tree that had fallen across the river, an island of garbage had accumulated, including cans, bottles, baseballs, softballs, and Styrofoam. There were even pieces of lumber and a propane tank.

To remove that mess, the volunteers used a small boat as well as rubber waders. Those were not in the boat, or in the river, climbed out onto the debris, including Hastings High School student Hazel Pucillo (pictured above).

The 14-year-old was prepared to fall into the water. Her grandfather, Steve Pucillo, checked on her from the shore as he supervised the cleanup of that area. He is responsible for an assortment of improvements along the Saw Mill River, including new trails and docks for small boats.

Hazel Pucillo was joined at first by Mihir Gupta of Brooklyn, who works for Hazen and Sawyer, a global engineering firm that was well represented among the volunteers. Their effort attracted the support of fellow Hazen and Sawyer employee Caitlin Fedio of Brooklyn and her boyfriend Jamie Vernon of Yonkers, as well as Sebastian Cabaret-Mertel of Ardsley and Justin de la Garza of Dobbs Ferry.

Cabaret-Mertel remembered a two-day cleanup along the Saw Mill River that netted 32 tires in 2012, the year he interned at Groundwork Hudson Valley while a senior at Ardsley High School. Six years later, the river is far from pristine, but it is far better thanks to Groundwork and the volunteers who support its efforts.

MS4 Annual Report Form

This report is being submitted for the reporting period ending March 9,

2	0	1	9
---	---	---	---

If submitting this form as part of a joint report on behalf of a coalition leave SPDES ID blank.

Name of MS4/Coalition

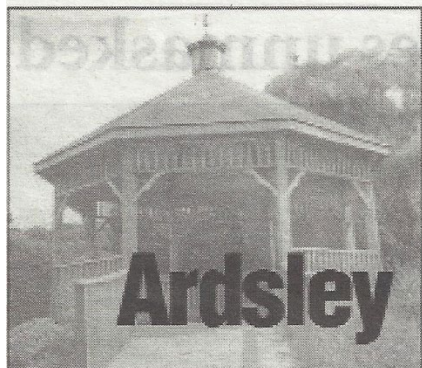
Village of Ardsley

SPDES ID

N	Y	R	2	0	A	3	1	6
---	---	---	---	---	---	---	---	---

PAGE 8 —

THE RIVERTOWNS ENTERPRISE
FRIDAY, APRIL 27, 2018

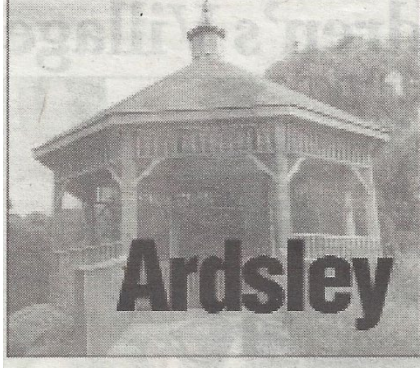


Happenings

The Ardsley SAYF Coalition teams up with the police department and the U.S. Drug Enforcement Administration to host a **Prescription Drug Giveback Day** tomorrow (April 28) at village hall, 507 Ashford Ave., 10 a.m.-2 p.m. Bring unwanted, unused, or expired prescriptions or over-the-counter drugs (but no syringes) for proper disposal.

PAGE 8 —

THE RIVERTOWNS ENTERPRISE
FRIDAY, MAY 18, 2018



Happenings

Village of Ardsley Stormwater Management and Ardsley High School Environmental Science Club members co-sponsor the second annual **Recycle Your Recycle Bin** tomorrow (May 19), 10 a.m.-2 p.m., at Bicentennial Park. Bring old recycle bins to exchange for new ones. Limit of one bin per family.

PAGE 12 — THE RIVERTOWNS ENTERPRISE
FRIDAY, JULY 6, 2018

Points of View

FROM THE EDITOR

Recycling made easy

The least appetizing corner of the Hastings Farmers' Market attracted a lot of attention last Saturday, June 30.

From the opening of the market at 8:30 a.m. until the closing at 1:30 p.m., a steady stream of shoppers stopped first at the food scraps collection station behind the Municipal Building.

Master composter Elisa Zazzera and fellow volunteers staffed the station, which consisted of plastic receptacles that each held about 200 pounds. By the end of the market, 559 pounds had accumulated.

That total has been the average since the collection started at the market on April 7. The total increased from 138 pounds on April 7 to 414 pounds on April 21. During the seven markets since, it has been between 550 and 600 pounds.

Those pounds comprise a significant percentage of the 3,800 collected each week by the food scrap recycling program administered by the Town of Greenburgh and the Greenburgh Nature Center (GNC).

The main drop-off site for the program is at Veteran Park on Olympic Lane in Ardsley, which is open seven days a week. The Saturday collection at the Hastings Farmers' Market was set up as a convenience. So was a Sunday collection at the Irvington Farmers' Market, which was so successful that it overwhelmed the volunteers who were transporting the food scraps to Veteran Park.

Unlike Hastings, the Village of Irvington opted to not use its Department of Public Works to haul the food scraps. To fill that void, the farmers' market offered to pay for a private carter, which warrants the approval of the Irvington Village Board and the Main Street School, where the market takes place.

Thanks to the Town of Greenburgh, the GNC, and the volunteers in Hastings and Irvington, food scrap recycling is easy. For \$20, participants can purchase a starter kit that consists of a 2-gallon pail, a 6-gallon pail, and a roll of compostable bags.

Last Saturday, at the Hastings Farmers' Market, there was a palpable sense of satisfaction among those collecting the food scraps and those dropping them off. Pound by pound, they were all contributing to a worthwhile effort.

MS4 Annual Report Form

This report is being submitted for the reporting period ending March 9, 2019

If submitting this form as part of a joint report on behalf of a coalition leave SPDES ID blank.

Name of MS4/Coalition

Village of Ardsley

SPDES ID

N Y R 2 0 A 3 1 6

PAGE 8 — THE RIVERTOWNS ENTERPRISE FRIDAY, AUGUST 24, 2018



Garbage trucks parked at the current DPW facility on Elm Street.

Village hires help to plan new DPW facility

By Kris DiLorenzo

The Village of Ardsley is embarking on a feasibility study to determine how to develop the 2.9-acre property it purchased last September as the new site for its Department of Public Works.

Currently on the property at 220 Heatherdell Road, which attorney Richard M. Greenspan sold to the Village for \$1,075,000, are his Victorian home, a garage, and a storage building. All three will be razed, but not until the Village is ready to build on the site.

Calgi Construction Co. of White Plains, which will conduct the study, submitted its proposal to the Village on July 12. For \$8,600, it will produce a planning document focusing on the DPW's current operations and its future needs, projected for five to 10 years. Massachusetts-based Weston & Sampson will collaborate with Calgi, providing design, engineering, and environmental services.

Village Manager Meredith Robson told the Enterprise that the study "will help inform the actual design of the building and find out the best way to provide adequately for services."

The Village has already conducted two separate State Environmental Quality Reviews (SEQR) required for the site: one for the property itself, and the second for tearing down the structures. Both reviews received a negative declaration; i.e., the creation of a new DPW facility will have no negative environmental effects.

Since 1978, the DPW has been headquartered at 3 Elm St., between the state Thruway (I-87) and Saw Mill River Parkway, on property leased from the Thruway Authority.

DPW foreman Rick Thompson estimates that the new site will accommodate five sanitation trucks, six dump trucks, three tractors, 12 snowplows, a street sweeper/vacuum, a front-end payload, fuel station, parking area, and storage for equipment, fuel, and nearly 100 tons of salt.

Preliminary drawings of the site have been made, and a designer will be chosen through a bidding process.

Calgi's initial step will be to gather information: an organizational chart of the DPW's departments, department heads, and personnel, and a list of its vehicles, equipment, and storage needs for salt, fuel, and other bulk materials. The company also will meet with key personnel to discuss DPW needs and the services it provides.

The DPW, which has about 20 employees, including a few who are seasonal, is responsible for street maintenance, sidewalk maintenance, street lighting, storm sewers, sanitary sewers, tree removal (from village property), snow removal, sign maintenance, refuse pickup, recycling pickup, organics pickup, maintenance of parks, maintenance of the Community Center and Village Hall, and various other tasks.

Calgi will also examine how the department operates at its present location, consider the department's future needs for equipment, fuel, and storage, and devise guidelines for any additional property purchases.

Robson also noted, "Part of the feasibility analysis will look at whether or not sharing a portion or all of our highway services makes sense."

That option entered the picture as a result of Greenburgh Supervisor Paul Feiner's interest in reducing property taxes by sharing services, as Gov. Andrew Cuomo's County-Wide Shared Services Initiative (CWSSI) requires. Last August, Greenburgh's DPW Commissioner Victor Carosi e-mailed Robson and former Ardsley Mayor Peter Porcino expressing his interest in attending the village board meeting at which the Heatherdell Road property purchase would be discussed. He stated that the Town would like to talk with the Village about sharing space at the town garage at 100 Old Sprain Road in Ardsley rather than incurring the expense of a new facility.

However, at their meeting on Aug. 7, 2017, the board unanimously approved a resolution to proceed with the purchase. The resolution described the current DPW garage as "obsolete, beyond reasonable repair, on property not owned by the Village and in immediate need of replacement to continue to provide even the minimal level of service to the public."

It stated, "Ardsley has conducted a diligent and thorough search for reasonable alternative sites to this obsolete facility, and as a result of that search and study, concluded that the only available site that would best suit and serve the interests of the community was the Heatherdell property."

The resolution also noted that the purchase price for the Heatherdell property was lower than its appraised or assessed value.



The former home of Richard Greenspan at 220 Heatherdell Road.

MS4 Annual Report Form

This report is being submitted for the reporting period ending March 9,

2	0	1	9
---	---	---	---

If submitting this form as part of a joint report on behalf of a coalition leave SPDES ID blank.

SPDES ID

Name of MS4/Coalition

Village of Ardsley

N	Y	R	2	0	A	3	1	6
---	---	---	---	---	---	---	---	---

THE RIVERTOWNS
Enterprise
VOLUME 43, NUMBER 30 • OCTOBER 26, 2018



Volunteers and Department of Public Works staff plant bulbs and more at the corner of Ashford Avenue and Saw Mill River Road.

Ardsley Cares Day marks decade of growth

By Vivienne Heston

ARDSLEY — Actions speak louder than words, as in more than 300 plants and bulbs planted, 700 sporting goods sorted, 50 boxes of books donated, and 800 meals prepared.

The 10th annual Ardsley Cares Day drew volunteers, to Ardsley High School on Oct. 20 to kick off a series of "giving back" activities held throughout the village and beyond.

More than 460 residents registered to prep meals for soup kitchens, collect books and toys, make trails for animal shelters, sort donated clothing and sporting goods, and clean up public spaces.

Activities were also held beyond the village limits, including a Midnight Run to Manhattan, a sports party at the Andrus Children's Center in Yonkers, Halloween-themed activities at the Coachman Center for the homeless in White Plains, and a Halloween party at Blytheville Children's Hospital in Valhalla on Oct. 21. A brunch at Ronald McDonald House, also in Valhalla, is scheduled for this Sunday, Oct. 28.

Ardsley Cares is an all-hands-on-deck operation with the PTA playing a leading role in securing funds and recruiting parent, teacher, student, and village volunteers.

"There is a lot of energy here — it is Ardsley's happy day," said Meghan Prunty Edelstein, one of the original organizers of the annual event. Ten years ago, she and a friend wanted to inform residents about volunteer opportunities in the community.

"We were drinking coffee in my basement and came up with the idea — we were braced to do everything ourselves since we were afraid no one would come, but over 300 people showed up," Edelstein said.

As participants began to arrive at 8:30 a.m., Ardsley firefighters served a hearty breakfast of pancakes, waffles, French toast, eggs, bacon, and sausage.

"We're a very caring community — teachers care, administrators care, and our families care. That's why you see all these kids and parents here," said Matthew Bowney, a member of the school board who was preparing meals along with his wife, Stephanie, a PTA vice president.

A staging area was set up with separate tables for sandwich-making (the "salami table," the "ham table"), toiletries, and brown bag assembly. Children made denotings with cheerful messages that were slipped into each bag.

"We want to deliver meals with dignity and grace. When I started volunteering seven years ago, we packed about 600 meals; now we're providing over 800," said Jarne Chapin-Miller, the PTA vice president at Ardsley Middle School.

Local unions contributed the fixings: apple sauce, cookies, and water from the teachers' union, and breads and cold cuts from Ardsley Office Employees, according to Diana Evangelista, an Ardsley High School science teacher and vice president of the Ardsley Congress of Teachers at AHS.

"It is an opportunity for families to work together — my sons are helping with the raffle," said Ucciel Mehta, co-chair of Ardsley's Multicultural, Diversity and Inclusion Committee who helped coordinate Ardsley Cares and whose sons attend Ardsley schools (Vinay, second grade, and Anshuman, sixth grade).

Raffle tickets were exchanged for donations of new unwrapped toys destined for Toys for Tots, and nonperishable food items for area food banks. Raffle prizes were provided by Club Pilates (Ardsley), United Martial Arts Centers of Ardsley, Trio Salon (Scarsdale), DeCosta's (Yonkers), Bread & Brine (Hastings), Harper's (Dobbs Ferry), and Selaire Oyster Bar & Fish House (Port Chester).

Volunteers donned bright purple "Ardsley Cares" T-shirts provided by an anonymous donor. The T-shirt logo was updated this year by artist Kristen Stone based on the original design by Valerie and Kenneth Lalli, all from Ardsley.

The purple T-shirts were visible all over the village as volunteers removed trash from a pond at the middle school and painted rocks to decorate the entrance of Concord Road Elementary.

Mayor Nancy Kabanian worked alongside Village Trustee Steve Edelstein (husband of Meghan) and 50 other volunteers to upgrade Silliman Park, at the corner of Ashford Avenue and Saw Mill River Road (Route 9A). With input from landscape architect Susan Janczlik, who is a member of the Ardsley Planning Board, plantings were procured via the Village's beautification fund. Department of Public Works staff members planted some of the larger trees in advance, and also spread topsoil and mulch.

"We are planting perennials and native plants and bulbs to spruce up the gateway," said Steve Edelstein. "We had to get rid of a lot of invasive plants and vines."

He added that more improvements were being considered, including a green barrier for the back of Addyman Square and a neglected island at the entrance to Fessenden Park and Ardsley Middle School.

"I love this day and am so proud to be part of a community that makes it a point to do something like this," said Lisa McCormack, who coordinated the Halloween party at the Coachman Family Center along with Anila Thomas. "It is why we chose to move to Ardsley in the first place."



Andrea Serban, Renee Serban, Ava Medina, Noa Medina, and Patty Medina prepare sandwiches at the high school.



Saurbhi Sood, Bayal Sharma, Ginny Kaur, and Preeti Chadha sort clothes at the high school.

MS4 Annual Report Form

This report is being submitted for the reporting period ending March 9,

2	0	1	9
---	---	---	---

If submitting this form as part of a joint report on behalf of a coalition leave SPDES ID blank.

Name of MS4/Coalition

Village of Ardsley

SPDES ID

N	Y	R	2	0	A	3	1	6
---	---	---	---	---	---	---	---	---

**Great
SMR
Cleanup
4/21/2018**



**Ardsley Cares
Cleanup
10/20/2018**



**Scout
Cleanup
4/28/2018**



MS4 Annual Report Form

This report is being submitted for the reporting period ending March 9, 2019

If submitting this form as part of a joint report on behalf of a coalition leave SPDES ID blank.

Name of MS4/Coalition

Village of Ardsley

SPDES ID

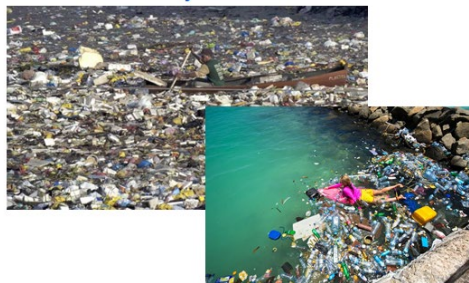
N Y R 2 0 A 3 1 6



Concord Road
Elementary School
Enviroscape Program
2018

5 Things You Can Do:

#3 ALWAYS recycle



Ardsley
Middle
School
Program
2018

MS4 Annual Report Form

This report is being submitted for the reporting period ending March 9,

2	0	1	9
---	---	---	---

If submitting this form as part of a joint report on behalf of a coalition leave SPDES ID blank.

Name of MS4/Coalition

Village of Ardsley									
--------------------	--	--	--	--	--	--	--	--	--

SPDES ID

N	Y	R	2	0	A	3	1	6
---	---	---	---	---	---	---	---	---



Recycle Your Recycling Bin II 5/19/2018



AHS Env Sci Club Bicentennial Park 5/19/2018

Brownies Bicentennial Park 5/20/2018



MS4 Annual Report Form

This report is being submitted for the reporting period ending March 9,

2	0	1	9
---	---	---	---

If submitting this form as part of a joint report on behalf of a coalition leave SPDES ID blank.

Name of MS4/Coalition Village of Ardsley

SPDES ID

N	Y	R	2	0	A	3	1	6
---	---	---	---	---	---	---	---	---



Town Supervisor Feiner



PB Chair Pellegrino



Former VM Calvi
Trustee D'Emilio
Garden Club Pres Weston



Mayor Kaboolian

Ardsley BBQ 2018



MS4 Annual Report Form

This report is being submitted for the reporting period ending March 9, 2019
If submitting this form as part of a joint report on behalf of a coalition leave SPDES ID blank.

SPDES ID

N Y R 2 0 A 3 1 6

Name of MS4/Coalition Village of Ardsley

Subwatershed: Saw Mill River		Outfall ID: A235	
Today's date: 3/23/2018		Time: 3:20 PM	
Investigator: Siddiqui, Kuhn		Form completed by: Siddiqui, Kuhn	
Temperature (°F): 47°	Rainfall (in.): Last 24 hours: 0" Last 48 hours: 0"	GPS Unit: Garmin etrex	
Latitude: N41°01'101"	Longitude: W73°39'551"	GPS LMK #:	
Camera: Samsung Galaxy		Photo #s:	
Land Use in Drainage Area (Check all that apply):			
Industrial		X Open Space	
Ultra-Urban Residential		Institutional	
X Suburban Residential		Other: Macy Park	
X Commercial		Known Industries: Dry Cleaners, Restaurants, Nail Salon, Pharmacy, Water Wheel Housing	

LOCATION	MATERIAL	SHAPE	DIMENSIONS (IN)	SUBMERGED
X Closed Pipe	RCP X CMP	X Circular	X Single	Diameter/Dimensions: 20"
	PVC HDPE	Elliptical	Double	In Water: No
	Steel	Box	Triple	X Partially Fully
	Other:	Other:	Other:	With Sediment: No
Open drainage	Concrete	X Trapezoid	Depth: 5"	Bottom Width: 12"
	Earthen	Parabolic	Top Width: 13"	
	rip-rap	Other:	Bottom Width: 12"	
	Other:	Other:	Other:	
In-Stream (applicable when collecting samples)				
Flow Present?	X Yes	No	If No, Skip to Section 5	
Flow Description (if present)	Trickle	X Moderate	Substantial	

FIELD DATA FOR FLOWING OUTFALLS				
PARAMETER	RESULT	UNIT	AVERAGE FLOW RATE (gal/min)	EQUIPMENT
Flow #1	Volume	Liter	46.9 gal/min	Bottle
	Time to fill	Sec		Stop watch
Flow #2	Flow depth	0' 3"		Tape measure
	Flow width	1' 6"		Tape measure
	Measured length	0' 7"		Tape measure
	Time of travel	3.75, 3.44, 2.66, 3.75, 3.85		Stop watch

Temp 48 °F
pH 7.0 units
Ammonia 0 mg/l

Subwatershed: Sprain Brook: Bx Bay		Outfall ID: A232	
Today's date: 04/10/2018		Time: 2:30 PM	
Investigator: Siddiqui, Kuhn		Form completed by: Siddiqui, Kuhn	
Temperature (°F): 42°	Rainfall (in.): Last 24 hours: 0" Last 48 hours: 0"	GPS Unit: Garmin etrex	
Latitude: N41°01'085"	Longitude: W73°49'931"	GPS LMK #:	
Camera: Samsung Galaxy		Photo #s:	
Land Use in Drainage Area (Check all that apply):			
Industrial		Open Space	
Ultra-Urban Residential		X Institutional	
X Suburban Residential		Other: AHS	
Commercial		Known Industries:	

LOCATION	MATERIAL	SHAPE	DIMENSIONS (IN)	SUBMERGED
Closed Pipe	RCP CMP	Circular	Single	In Water: No
	PVC HDPE	Elliptical	Double	Partially Fully
	Steel	Box	Triple	X Partially Fully
	Other:	Other:	Other:	With Sediment: No
X Open drainage	Concrete	X Trapezoid	Depth: 5"	Bottom Width: 12"
	Earthen	Parabolic	Top Width: 13"	
	X rip-rap	Other:	Bottom Width: 12"	
	Other:	Other:	Other:	
In-Stream (applicable when collecting samples)				
Flow Present?	X Yes	No	If No, Skip to Section 5	
Flow Description (if present)	Trickle	Moderate	X Substantial	

FIELD DATA FOR FLOWING OUTFALLS				
PARAMETER	RESULT	UNIT	AVERAGE FLOW RATE (gal/min)	EQUIPMENT
Flow #1	Volume	Liter	227.7 gal/min	Bottle
	Time to fill	Sec		Stop watch
Flow #2	Flow depth	0' 5"		Tape measure
	Flow width	1' 1"		Tape measure
	Measured length	2' 1"		Tape measure
	Time of travel	2.00, 1.93, 2.06, 2.12, 1.90		Stop watch

Temp 50 °F
pH 7.0 units
Ammonia 0 mg/l

OUTFALL RECONNAISSANCE INVENTORY FIELD SHEET				
Are Any Physical Indicators Present in the flow?				
INDICATOR	CHECK if Present	DESCRIPTION	RELATIVE SEVERITY INDEX (1-3)	
Odor	No	Sewage Rancid/sour Sulfide Other: Petroleum gas	1 - Faint	2 - Easily detected
Color	Clear	Brown, Gray Yellow Green Orange Red Other:	1 - Faint colors in sample bottle	2 - Clearly visible in sample bottle
Turbidity	Clear	See severity	1 - Slight cloudiness	2 - Cloudy
Floatables - Does Not Include Trash!	No	Sewage (Toilet Paper, etc.) Suds Petroleum (oil sheen) Other:	1 - Few/light; origin not obvious	2 - Some; indications of origin (e.g., possible suds or oil sheen)

Physical Indicators for Both Flowing and Non-Flowing Outfalls				
Are physical indicators that are not related to flow present? Yes No (If No, Skip to Section 6)				
INDICATOR	CHECK if Present	DESCRIPTION	COMMENTS	
Outfall Damage	No	Spalling Cracking or Chipping Peeling Paint Corrosion		
Deposits/Strains	No	Rust, Flowline Only Flow Line Paint Other:		
Abnormal Vegetation	No	Excessive Inhabited		
Poor pool quality	No	Odors Suds Colors Excessive Algae Floatables Oil Sheen Other:		
Pipe benthic growth	No	Brown Orange Green Other:		

Overall Outfall Characterization				
X Unlikely	Potential (presence of two or more indicators)	Suspect (one or more indicators with a severity of 3)	Obvious	

Section 7: Data Collection				
1. Sample for the lab?	Yes	No		
2. If yes, collected from:	Flow	Pool		
3. Intermittent flow trap set?	X Yes	No	3:49 PM	If Yes, type: X OBM Caulk dam

Section 8: Any Non-Ilicit Discharge Concerns (e.g., trash or needed infrastructure repairs)?				
No		Collected: 3/25/2018 4 PM		
		Wet: NEG		
		Dry: NEG 4/9/2018		



OUTFALL RECONNAISSANCE INVENTORY FIELD SHEET				
Are Any Physical Indicators Present in the flow?				
INDICATOR	CHECK if Present	DESCRIPTION	RELATIVE SEVERITY INDEX (1-3)	
Odor	no	Sewage Rancid/sour Sulfide Other: Petroleum gas	1 - Faint	2 - Easily detected
Color	Faint yellow	Clear Brown, Gray Yellow Green Orange Red Other:	X 1 - Faint colors in sample bottle	2 - Clearly visible in sample bottle
Turbidity	clear	See severity	1 - Slight cloudiness	2 - Cloudy
Floatables - Does Not Include Trash!	no	Sewage (Toilet Paper, etc.) Suds Petroleum (oil sheen) Other:	1 - Few/light; origin not obvious	2 - Some; indications of origin (e.g., possible suds or oil sheen)

Physical Indicators for Both Flowing and Non-Flowing Outfalls				
Are physical indicators that are not related to flow present? Yes No (If No, Skip to Section 6)				
INDICATOR	CHECK if Present	DESCRIPTION	COMMENTS	
Outfall Damage	leaks	Spalling Cracking or Chipping Peeling Paint Corrosion	retaining wall of lake has leaks	
Deposits/Strains	algae	Only Flow Line Paint Other:		
Abnormal Vegetation	moderate	Excessive Inhabited		
Poor pool quality	no	Odors Suds Colors Excessive Algae Floatables Oil Sheen Other:		
Pipe benthic growth	no	Brown Orange Green Other:		

Overall Outfall Characterization				
X Unlikely	Potential (presence of two or more indicators)	Suspect (one or more indicators with a severity of 3)	Obvious	

Section 7: Data Collection				
1. Sample for the lab?	Yes	X No		
2. If yes, collected from:	Flow	Pool		
3. Intermittent flow trap set?	X Yes	No	2:45 PM	If Yes, type: X OBM Caulk dam

Section 8: Any Non-Ilicit Discharge Concerns (e.g., trash or needed infrastructure repairs)?				
no		Collected: 4/13/2018 12PM		
		Wet: NEG		
		Dry: NEG 4/18/2018		



OUTFALL RECONNAISSANCE INVENTORY FIELD SHEET				
Are Any Physical Indicators Present in the flow?				
INDICATOR	CHECK if Present	DESCRIPTION	RELATIVE SEVERITY INDEX (1-3)	
Odor	No	Sewage Rancid/sour Sulfide Other: Petroleum gas	1 - Faint	2 - Easily detected
Color	Clear	Brown, Gray Yellow Green Orange Red Other:	1 - Faint colors in sample bottle	2 - Clearly visible in sample bottle
Turbidity	Clear	See severity	1 - Slight cloudiness	2 - Cloudy
Floatables - Does Not Include Trash!	no	Sewage (Toilet Paper, etc.) Suds Petroleum (oil sheen) Other:	1 - Few/light; origin not obvious	2 - Some; indications of origin (e.g., possible suds or oil sheen)

Physical Indicators for Both Flowing and Non-Flowing Outfalls				
Are physical indicators that are not related to flow present? Yes No (If No, Skip to Section 6)				
INDICATOR	CHECK if Present	DESCRIPTION	COMMENTS	
Outfall Damage	No	Spalling Cracking or Chipping Peeling Paint Corrosion		
Deposits/Strains	No	Only Flow Line Paint Other:		
Abnormal Vegetation	No	Excessive Inhabited		
Poor pool quality	No	Odors Suds Colors Excessive Algae Floatables Oil Sheen Other:		
Pipe benthic growth	No	Brown Orange Green Other:		

Overall Outfall Characterization				
X Unlikely	Potential (presence of two or more indicators)	Suspect (one or more indicators with a severity of 3)	Obvious	

Section 7: Data Collection				
1. Sample for the lab?	Yes	X No		
2. If yes, collected from:	Flow	Pool		
3. Intermittent flow trap set?	X Yes	No		If Yes, type: X OBM Caulk dam 3:30 PM

Section 8: Any Non-Ilicit Discharge Concerns (e.g., trash or needed infrastructure repairs)?				
no		Collected: 4/27/2018 4PM		
		Wet: NEG		
		Dry: NEG 5/1/2018		



MS4 Annual Report Form

This report is being submitted for the reporting period ending March 9, 2019

If submitting this form as part of a joint report on behalf of a coalition leave SPDES ID blank.

SPDES ID

N Y R 2 0 A 3 1 6

Name of MS4/Coalition Village of Ardsley

Subwatershed: Sprain Brook/Bx River		Outfall ID: AZ 35	
Today's date: 6/5/2018		Time: 3:15 PM	
Investigator: Siddiqui, Kuhn		Form completed by: Siddiqui, Kuhn	
Temperature (°F): 79°	Rainfall (in.): Last 24 hours: 0" Last 48 hours: 0"	GPS Unit: Garmin GPS	
Latitude: N41°00'13"	Longitude: W73°50'04"	GPS LMK #:	
Camera: Samsung Galaxy		Photo #:	
Land Use in Drainage Area (Check all that apply):		Open Space	
Industrial		X Institutional	
Ultra-Urban Residential		Other: AHS	
X Suburban Residential		Known Industries:	
Commercial			

Outfall Reconnaissance Sheet

LOCATION	MATERIAL	SHAPE	DIMENSIONS (IN.)	SUBMERGED
X Closed Pipe	X RCP CMP	X Circular	X Single	In Water: X No Partially Fully With Sediment: X Partially X Fully
	PVC HDPE	Elliptical	Double	
	Steel	Box	Triple	
	Other:	Other:	Other:	
Open drainage	Concrete	Trapezoid	Depth: 10"	
	Earthen	Parabolic	Top Width:	
	X rip-rap	Other:	Bottom Width:	
	Other:	Other:	Other:	

Temp: 64 °F
pH: 6.2 units
Ammonia: 0 mg/l

PARAMETER	RESULT	UNIT	AVERAGE FLOW RATE (gal/min)	EQUIPMENT
Flow #1	Volume	220 ml, 210 ml, 210 ml, 215 ml	1 liter	Bottle
	Time to fill	1:57, 1:40, 1:57, 1:57	Sec	Stop watch
Flow #2	Flow depth	"	Fl. In	Tape measure
	Flow width	"	Fl. In	Tape measure
	Measured length	"	Fl. In	Tape measure
	Time of travel	Sec	Stop watch	

OUTFALL RECONNAISSANCE INVENTORY FIELD SHEET

INDICATOR	CHECK if Present	DESCRIPTION	RELATIVE SEVERITY INDEX (1-3)
Odor	No	Sewage Rancid/sour Sulfide Other: Petroleum gas	1 - Faint 2 - Easily detected 3 - Noticeable from a distance
Color	Clear	Clear Brown/Gray Yellow Green Orange Red Other:	1 - Faint colors in sample bottle 2 - Clearly visible in sample bottle 3 - Clearly visible in outfall flow
Turbidity	Clear	Set severity	1 - Slight cloudiness 2 - Cloudy 3 - Opaque
Floatables	Does Not Include Trash!	Sewage (Toilet Paper, etc.) Sulfide Petroleum (oil sheen) Other:	1 - Few/light, origin not obvious 2 - Some, indications of origin (e.g., obvious oil sheen) 3 - Some, origin clear (e.g., obvious oil sheen, or floating sanitary materials)

Physical Indicators for Both Flowing and Non-Flowing Outfalls

INDICATOR	CHECK if Present	DESCRIPTION	COMMENTS
Outfall Damage	Chipped	Spalling Cracking or Chipping Peeling Paint Corrosion	
Deposits/Sludge	Filled with leaves & sediment	Only Flow Line Paint Other:	
Abnormal Vegetation	no	Excessive Inhabited	
Poor pool quality	yes	Odors Colors Excessive Algae	Floatables Oil Sheen Other: excessive leaves
Pipe benthic growth	no	Brown Orange Green Other:	

Overall Outfall Characterization

X Unlikely Potential (presence of two or more indicators) Suspect (one or more indicators with a severity of 3) Obvious

Section 7: Data Collection

1. Sample for the lab? Yes X No
2. If yes, collected from: Flow Pool
3. Intermittent flow trap set? X Yes No If Yes, type: X ORM Culk dam 3:45 PM

Section 8: Any Non-Illicit Discharge Concerns (e.g., trash or needed infrastructure repairs)?

Collected: 6/10/2018 4 PM
Wet: NEG
Dry: NEG 6/11/2018



Gave out one letter to resident Agnes Circle

Subwatershed: Sprain Brook/Bx River		Outfall ID: AZ 34	
Today's date: 06/12/2018		Time: 2:20 PM	
Investigator: Siddiqui, Kuhn		Form completed by: Siddiqui, Kuhn	
Temperature (°F): 72°	Rainfall (in.): Last 24 hours: 0" Last 48 hours: 0"	GPS Unit: Garmin GPS	
Latitude: N41°01'12"	Longitude: W73°50'27"	GPS LMK #:	
Camera: Samsung Galaxy		Photo #:	
Land Use in Drainage Area (Check all that apply):		X Open Space	
Industrial		X Institutional	
Ultra-Urban Residential		Other: Known Industries: Macy Park, Restaurant, Water Wheel Apts, Neil School	
X Suburban Residential			
Commercial			

Outfall Reconnaissance Sheet

LOCATION	MATERIAL	SHAPE	DIMENSIONS (IN.)	SUBMERGED
Closed Pipe	X RCP CMP	Circular	Single	In Water: No Partially Fully With Sediment: No Partially Fully
	PVC HDPE	Elliptical	Double	
	Steel	Box	Triple	
	Other:	Other:	Other:	
X Open drainage	Concrete	Trapezoid	Depth: 10"	
	Earthen	Parabolic	Top Width: 8' 3"	
	X rip-rap	Other: Rectangle	Bottom Width: 8' 3"	
	Other:	Other:	Other:	

Temp: 74 °F
pH: 7.5 units
Ammonia: 0 mg/l

PARAMETER	RESULT	UNIT	AVERAGE FLOW RATE (gal/min)	EQUIPMENT
Flow #1	Volume		1 liter	Bottle
	Time to fill		Sec	Stop watch
Flow #2	Flow depth	"	Fl. In	Tape measure
	Flow width	"	Fl. In	Tape measure
	Measured length	"	Fl. In	Tape measure
	Time of travel	Sec	Stop watch	

OUTFALL RECONNAISSANCE INVENTORY FIELD SHEET

INDICATOR	CHECK if Present	DESCRIPTION	RELATIVE SEVERITY INDEX (1-3)
Odor	No	Sewage Rancid/sour Sulfide Other: Petroleum gas	1 - Faint 2 - Easily detected 3 - Noticeable from a distance
Color	Very faint yellow	Clear Brown/Gray X Yellow Green Orange Red Other:	1 - Faint colors in sample bottle 2 - Clearly visible in sample bottle 3 - Clearly visible in outfall flow
Turbidity	Clear	Set severity	1 - Slight cloudiness 2 - Cloudy 3 - Opaque
Floatables	Does Not Include Trash!	Sewage (Toilet Paper, etc.) Sulfide Petroleum (oil sheen) Other:	1 - Few/light, origin not obvious 2 - Some, indications of origin (e.g., obvious oil sheen) 3 - Some, origin clear (e.g., obvious oil sheen, or floating sanitary materials)

Physical Indicators for Both Flowing and Non-Flowing Outfalls

INDICATOR	CHECK if Present	DESCRIPTION	COMMENTS
Outfall Damage	Rip rap displaced	Spalling Cracking or Chipping Peeling Paint Corrosion	rip rap displaced off streambank walls
Deposits/Sludge	sediment	Only Flow Line Paint Other:	
Abnormal Vegetation	light	Excessive Inhabited	
Poor pool quality	light oil sheen	Odors Colors Excessive Algae	Floatables X Oil Sheen Other:
Pipe benthic growth	sls	Brown Orange Green Other:	

Overall Outfall Characterization

X Unlikely Potential (presence of two or more indicators) Suspect (one or more indicators with a severity of 3) Obvious

Section 7: Data Collection

1. Sample for the lab? Yes X No
2. If yes, collected from: Flow Pool
3. Intermittent flow trap set? Yes X No If Yes, type: ORM Culk dam

Section 8: Any Non-Illicit Discharge Concerns (e.g., trash or needed infrastructure repairs)?

Collected: 6/12/2018 12 PM
Wet: NEG
Dry: NEG



Subwatershed: Sprain Brook/Bx River		Outfall ID: AZ31	
Today's date: 6/25/2018		Time: 3:20 PM	
Investigator: Siddiqui, Kuhn		Form completed by: Siddiqui, Kuhn	
Temperature (°F): 71°	Rainfall (in.): Last 24 hours: 0" Last 48 hours: 0"	GPS Unit: Garmin GPS	
Latitude: N 41°01'09"	Longitude: W 73°49'07"	GPS LMK #:	
Camera: Samsung Galaxy		Photo #:	
Land Use in Drainage Area (Check all that apply):		Open Space	
Industrial		X Institutional	
Ultra-Urban Residential		Other: AHS	
X Suburban Residential		Known Industries:	
Commercial			

Outfall Reconnaissance Sheet

LOCATION	MATERIAL	SHAPE	DIMENSIONS (IN.)	SUBMERGED
X Closed Pipe	X RCP CMP	X Circular	Single	In Water: X No Partially Fully With Sediment: X Partially X Fully
	PVC HDPE	Elliptical	X Double	
	Steel	Box	Triple	
	Other:	Other:	Other:	
Open drainage	Concrete	Trapezoid	Depth:	
	Earthen	Parabolic	Top Width:	
	X rip-rap	Other:	Bottom Width:	
	Other:	Other:	Other:	

Temp: 70 °F
pH: 6.7 units
Ammonia: 0 mg/l

PARAMETER	RESULT	UNIT	AVERAGE FLOW RATE (gal/min)	EQUIPMENT
Flow #1	Volume	220 ml, 175 ml, 150 ml, 200 ml, 220 ml	1 liter	Bottle
	Time to fill	3:03, 1:66, 1:97, 2:10, 2:53	Sec	Stop watch
Flow #2	Flow depth	"	Fl. In	Tape measure
	Flow width	"	Fl. In	Tape measure
	Measured length	"	Fl. In	Tape measure
	Time of travel	Sec	Stop watch	

OUTFALL RECONNAISSANCE INVENTORY FIELD SHEET

INDICATOR	CHECK if Present	DESCRIPTION	RELATIVE SEVERITY INDEX (1-3)
Odor	No	Sewage Rancid/sour Sulfide Other: Petroleum gas	1 - Faint 2 - Easily detected 3 - Noticeable from a distance
Color	Clear	Clear Brown/Gray Yellow Green Orange Red Other:	1 - Faint colors in sample bottle 2 - Clearly visible in sample bottle 3 - Clearly visible in outfall flow
Turbidity	Clear	Set severity	1 - Slight cloudiness 2 - Cloudy 3 - Opaque
Floatables	Does Not Include Trash!	Sewage (Toilet Paper, etc.) Sulfide Petroleum (oil sheen) Other:	1 - Few/light, origin not obvious 2 - Some, indications of origin (e.g., obvious oil sheen) 3 - Some, origin clear (e.g., obvious oil sheen, or floating sanitary materials)

Physical Indicators for Both Flowing and Non-Flowing Outfalls

INDICATOR	CHECK if Present	DESCRIPTION	COMMENTS
Outfall Damage	no	Spalling Cracking or Chipping Peeling Paint Corrosion	
Deposits/Sludge	Flow line algae	Only Flow Line Paint Other:	
Abnormal Vegetation	inhabited	Excessive X Inhabited	
Poor pool quality	Algae on bottom	Odors Colors Excessive Algae	Floatables Oil Sheen Other:
Pipe benthic growth	no	Brown Orange Green Other:	

Overall Outfall Characterization

X Unlikely Potential (presence of two or more indicators) Suspect (one or more indicators with a severity of 3) Obvious

Section 7: Data Collection

1. Sample for the lab? Yes X No
2. If yes, collected from: Flow Pool
3. Intermittent flow trap set? X Yes No If Yes, type: X ORM Culk dam 4 PM

Section 8: Any Non-Illicit Discharge Concerns (e.g., trash or needed infrastructure repairs)?

Collected: 6/25/2018 12 PM
Wet: NEG
Dry: NEG 6/28/2018



MS4 Annual Report Form

This report is being submitted for the reporting period ending March 9, 2019

If submitting this form as part of a joint report on behalf of a coalition leave SPDES ID blank.

Name of MS4/Coalition Village of Ardsley

SPDES ID

N Y R 2 0 A 3 1 6

Subwatershed: Sprain Brook/Bronx River
Today's date: 2/20/2018
Investigator: Caceres, Kuhn
Form completed by: [Signature]
Temperature (°F): 75° **Rainfall (in.):** Last 24 hours: 0" Last 48 hours: 0"
Latitude: 41°00.816' **Longitude:** -73°50.773' **GPS Unit:** Garmin etrex **GPS LMK #:** [blank]
Camera: Samsung Galaxy
Land Use in Drainage Area (Check all that apply):
☐ Industrial
☐ Ultra-Urban Residential
☒ Suburban Residential
☐ Commercial

Outfall Reconnaissance Sheet

OUTFALL RECONNAISSANCE INVENTORY FIELD SHEET

Are Any Physical Indicators Present in the flow? Yes No

INDICATOR	CHECK if Present	DESCRIPTION	RELATIVE SEVERITY INDEX (1-3)		
Odor		Sewage Rancid/sour Sulfide Other: Petroleum gas	1 - Faint	2 - Easily detected	3 - Noticeable from a distance
Color		Clear Brown, Gray Yellow Green Orange Red Other:	1 - Faint colors in sample bottle	2 - Clearly visible in sample bottle	3 - Clearly visible in outfall flow
Turbidity		See severity	1 - Slight cloudiness	2 - Cloudy	3 - Opaque
Floatables Does Not Include Trash!		Sewage (Toilet Paper, etc.) Suds Petroleum (oil sheen) Other:	1 - Few/slight, origin not obvious	2 - Some, indications of origin (e.g., possible suds or oil sheen)	3 - Some, origin clear (e.g., obvious oil suds, or floating sanitary materials)

Physical Indicators for Both Flowing and Non-Flowing Outfalls

Are physical indicators that are not related to flow present? Yes No (If No, Skip to Section 6)

INDICATOR	CHECK if Present	DESCRIPTION	COMMENTS
Outfall Damage		Spalling Cracking or Chipping Peeling Paint Corrosion	
Deposits/Sludge		Only Flow Line Paint Other:	
Abnormal Vegetation		Excessive Inhabited	
Poor pool quality		Odors Colors Floatables Oil Sheen Suds Excessive Algae Other:	
Pipe benthic growth		Brown Orange Green Other:	

Overall Outfall Characterization

Unlikely Potential (presence of two or more indicators) Suspect (one or more indicators with a severity of 3) Obvious

Section 7: Data Collection

1. Sample for the lab? Yes No
 2. If yes, collected from: Flow Pool
 3. Intermittent flow trap set? Yes No If Yes, type: OBM Caulk dam

Section 8: Any Non-Ilicit Discharge Concerns (e.g., trash or needed infrastructure repairs)? No 1 letter given about 651 Ashford Avenue, small fish seen in brook



OUTFALL RECONNAISSANCE INVENTORY FIELD SHEET

Are Any Physical Indicators Present in the flow? Yes No

INDICATOR	CHECK if Present	DESCRIPTION	RELATIVE SEVERITY INDEX (1-3)		
Odor	no	Sewage Rancid/sour Sulfide Other: Petroleum gas	1 - Faint	2 - Easily detected	3 - Noticeable from a distance
Color	clear	X Clear Brown, Gray Yellow Green Orange Red Other:	1 - Faint colors in sample bottle	2 - Clearly visible in sample bottle	3 - Clearly visible in outfall flow
Turbidity	clear	See severity	1 - Slight cloudiness	2 - Cloudy	3 - Opaque
Floatables Does Not Include Trash!	no	Sewage (Toilet Paper, etc.) Suds Petroleum (oil sheen) Other:	1 - Few/slight, origin not obvious	2 - Some, indications of origin (e.g., possible suds or oil sheen)	3 - Some, origin clear (e.g., obvious oil suds, or floating sanitary materials)

Physical Indicators for Both Flowing and Non-Flowing Outfalls

Are physical indicators that are not related to flow present? Yes No (If No, Skip to Section 6)

INDICATOR	CHECK if Present	DESCRIPTION	COMMENTS
Outfall Damage	no	Spalling Cracking or Chipping Peeling Paint Corrosion	
Deposits/Sludge	Flow line	Only X Flow Line Paint Other:	
Abnormal Vegetation	slight	Excessive Inhabited	
Poor pool quality	no	Odors Colors Floatables Oil Sheen Suds Excessive Algae Other:	
Pipe benthic growth	yes	Brown Orange X Green Other:	plants

Overall Outfall Characterization

X Unlikely Potential (presence of two or more indicators) Suspect (one or more indicators with a severity of 3) Obvious

Section 7: Data Collection

1. Sample for the lab? Yes X No
 2. If yes, collected from: Flow Pool
 3. Intermittent flow trap set? X Yes No If Yes, type: X OBM Caulk dam 4:00 PM

Section 8: Any Non-Ilicit Discharge Concerns (e.g., trash or needed infrastructure repairs)?

Collected: 7/30/2018 11 AM
 Wet: NEG
 Dry: NEG 7/31/2018



OUTFALL RECONNAISSANCE INVENTORY FIELD SHEET

Are Any Physical Indicators Present in the flow? Yes No

INDICATOR	CHECK if Present	DESCRIPTION	RELATIVE SEVERITY INDEX (1-3)		
Odor	No	Sewage Rancid/sour Sulfide Other: Petroleum gas	1 - Faint	2 - Easily detected	3 - Noticeable from a distance
Color	Very faint yellow	Clear Brown, Gray X Yellow Green Orange Red Other:	X 1 - Faint colors in sample bottle	2 - Clearly visible in sample bottle	3 - Clearly visible in outfall flow
Turbidity	Clear	See severity	1 - Slight cloudiness	2 - Cloudy	3 - Opaque
Floatables Does Not Include Trash!	No	Sewage (Toilet Paper, etc.) Suds Petroleum (oil sheen) Other:	1 - Few/slight, origin not obvious	2 - Some, indications of origin (e.g., possible suds or oil sheen)	3 - Some, origin clear (e.g., obvious oil suds, or floating sanitary materials)

Physical Indicators for Both Flowing and Non-Flowing Outfalls

Are physical indicators that are not related to flow present? Yes No (If No, Skip to Section 6)

INDICATOR	CHECK if Present	DESCRIPTION	COMMENTS
Outfall Damage	No	Spalling Cracking or Chipping Peeling Paint Corrosion	
Deposits/Sludge	Flow line	Only X Flow Line Paint Other:	
Abnormal Vegetation	No	Excessive Inhabited	
Poor pool quality	No	Odors Colors Floatables Oil Sheen Suds Excessive Algae Other:	
Pipe benthic growth	No	Brown Orange Green Other:	

Overall Outfall Characterization

Unlikely Potential (presence of two or more indicators) Suspect (one or more indicators with a severity of 3) Obvious

Section 7: Data Collection

1. Sample for the lab? Yes X No
 2. If yes, collected from: Flow Pool
 3. Intermittent flow trap set? X Yes No If Yes, type: OBM Caulk dam 3:30 PM

Section 8: Any Non-Ilicit Discharge Concerns (e.g., trash or needed infrastructure repairs)? No

Collected: 8/24/2018 11 AM
 Wet: NEG 8/26/2018 11 AM
 Dry: NEG 8/28/2018



Subwatershed: Sprain Brook/Bronx River
Today's date: 2/20/2018
Investigator: Caceres, Kuhn
Form completed by: [Signature]
Temperature (°F): 75° **Rainfall (in.):** Last 24 hours: 0" Last 48 hours: 0"
Latitude: 41°00.816' **Longitude:** -73°50.773' **GPS Unit:** Garmin etrex **GPS LMK #:** [blank]
Camera: Samsung Galaxy
Land Use in Drainage Area (Check all that apply):
☐ Industrial
☐ Ultra-Urban Residential
☒ Suburban Residential
☐ Commercial

Temp 75 °F
 pH 7.4 units
 Ammonia 0 mg/l

PARAMETER	RESULT	UNIT	AVERAGE FLOW RATE (gal/min)	EQUIPMENT
Flow #1	Volume	Liter		Bottle
	Time to fill	Sec		Stop watch
Flow #2	Flow depth	ft, in		Tape measure
	Flow width	ft, in		Tape measure
	Measured length	ft, in		Tape measure
	Time of travel	Sec		Stop watch

Subwatershed: Saw Mill River
Today's date: 2/20/2018
Investigator: Caceres, Kuhn
Form completed by: [Signature]
Temperature (°F): 88° **Rainfall (in.):** Last 24 hours: 0.06" Last 48 hours: 0.50"
Latitude: 41°00.816' **Longitude:** -73°50.773' **GPS Unit:** Garmin etrex **GPS LMK #:** [blank]
Camera: Samsung Galaxy
Land Use in Drainage Area (Check all that apply):
☐ Industrial
☒ Ultra-Urban Residential
☐ Suburban Residential
☒ Commercial

Outfall Reconnaissance Sheet

Subwatershed: Saw Mill River
Today's date: 2/20/2018
Investigator: Caceres, Kuhn
Form completed by: [Signature]
Temperature (°F): 88° **Rainfall (in.):** Last 24 hours: 0.06" Last 48 hours: 0.50"
Latitude: 41°00.816' **Longitude:** -73°50.773' **GPS Unit:** Garmin etrex **GPS LMK #:** [blank]
Camera: Samsung Galaxy
Land Use in Drainage Area (Check all that apply):
☐ Industrial
☒ Ultra-Urban Residential
☐ Suburban Residential
☒ Commercial

Temp 70 °F
 pH 7.4 units
 Ammonia 0 mg/l

PARAMETER	RESULT	UNIT	AVERAGE FLOW RATE (gal/min)	EQUIPMENT
Flow #1	Volume	Liter		Bottle
	Time to fill	Sec		Stop watch
Flow #2	Flow depth	ft, in	74.7 gal/min	Tape measure
	Flow width	ft, in		Tape measure
	Measured length	ft, in		Tape measure
	Time of travel	Sec		Stop watch

Subwatershed: Saw Mill River
Today's date: 2/20/2018
Investigator: Caceres, Kuhn
Form completed by: [Signature]
Temperature (°F): 82° **Rainfall (in.):** Last 24 hours: 0.47" Last 48 hours: 0.47"
Latitude: N 41°01.039' **Longitude:** W 73°50.445' **GPS Unit:** Garmin etrex **GPS LMK #:** [blank]
Camera: Samsung Galaxy
Land Use in Drainage Area (Check all that apply):
☐ Industrial
☐ Ultra-Urban Residential
☒ Suburban Residential
☐ Commercial

Outfall Reconnaissance Sheet

Subwatershed: Saw Mill River
Today's date: 2/20/2018
Investigator: Caceres, Kuhn
Form completed by: [Signature]
Temperature (°F): 82° **Rainfall (in.):** Last 24 hours: 0.47" Last 48 hours: 0.47"
Latitude: N 41°01.039' **Longitude:** W 73°50.445' **GPS Unit:** Garmin etrex **GPS LMK #:** [blank]
Camera: Samsung Galaxy
Land Use in Drainage Area (Check all that apply):
☐ Industrial
☐ Ultra-Urban Residential
☒ Suburban Residential
☐ Commercial

Temp 72 °F
 pH 7.5 units
 Ammonia 0 mg/l

PARAMETER	RESULT	UNIT	AVERAGE FLOW RATE (gal/min)	EQUIPMENT
Flow #1	Volume	Liter		Bottle
	Time to fill	Sec		Stop watch
Flow #2	Flow depth	ft, in	67.3 gal/min	Tape measure
	Flow width	ft, in		Tape measure
	Measured length	ft, in		Tape measure
	Time of travel	Sec		Stop watch

MS4 Annual Report Form

This report is being submitted for the reporting period ending March 9, 2019

If submitting this form as part of a joint report on behalf of a coalition leave SPDES ID blank.

SPDES ID

N Y R 2 0 A 3 1 6

Name of MS4/Coalition Village of Ardsley

Subwatershed: Saw Mill River	Outfall ID: AZ21
Today's date: 8/30/2018	Time: 3:30 PM
Investigators: Caceres, Kuhn	Form completed by: <i>(signature)</i>
Temperature (°F): 89°	Rainfall (in.): Last 24 hours: 0" Last 48 hours: 0"
Latitude: N 41 00.941 Longitude: W 73 59.715	GPS Unit: Garmin etrex GPS LMK #:
Camera: Samsung Galaxy	Photo #s:
Land Use in Drainage Area (Check all that apply):	
Industrial	X Open Space
Ultra-Urban Residential	Institutional
X Suburban Residential	Other: Restaurant, Nail Salon, Macy Park
X Commercial	Known Industries:

Notes (e.g., origin of outfall, if known): Revolutionary Rd

LOCATION	MATERIAL	SHAPE	DIMENSIONS (IN.)	SUBMERGED
X Closed Pipe	RCP CMP	Circular	X Single	In Water: No
	PVC HDPE	Elliptical	Double	X Partially Fully
	Steel	X Box	Triple	
	Other: Stone	Other:	Other:	With Sediment: No
Open drainage	Concrete	Trapezoid	Depth:	X Partially Fully
	Earthen	Parabolic	Top Width:	
	rip-rap	Other:	Bottom Width:	
	Other:			
In-Stream (applicable when collecting samples)				
Flow Present?	X Yes	No	If No, Skip to Section 5	
Flow Description (if present)	Trickle	X Moderate	Substantial	

Outfall Reconnaissance Sheet

Temp	72	°F
pH	8.0	units
Ammonia	0	mg/l

OUTFALL RECONNAISSANCE INVENTORY FIELD SHEET

Are Any Physical Indicators Present in the flow?

INDICATOR	CHECK if Present	DESCRIPTION	RELATIVE SEVERITY INDEX (1-3)		
Odor	No	Sewage Rancid/sour Sulfide Other: Petroleum gas	1 - Faint	2 - Easily detected	3 - Noticeable from a distance
Color	Clear	Clear Brown, Gray Yellow Green Orange Red Other:	1 - Faint colors in sample bottle	2 - Clearly visible in sample bottle	3 - Clearly visible in outfall flow
Turbidity	No	See severity	1 - Slight cloudiness	2 - Cloudy	3 - Opaque
Floatables - Does Not Include Trash!!	No	Sewage (Toilet Paper, etc.) Suds Petroleum (oil sheen) Other:	1 - Few/slight, origin not obvious	2 - Some, indications of origin (e.g., possible suds or oil sheen)	3 - Some, origin clear (e.g., obvious oil suds, or floating sanitary materials)

Physical Indicators for Both Flowing and Non-Flowing Outfalls

Are physical indicators that are not related to flow present? Yes No (If No, Skip to Section 6)

INDICATOR	CHECK if Present	DESCRIPTION	COMMENTS
Outfall Damage	No	Spalling Cracking or Chipping Peeling Paint Corrosion	
Deposits/Stains	No	Only Flow Line Paint Other:	
Abnormal Vegetation	No	Excessive Inhabited	
Poor pool quality	No	Odors Colors Excessive Algae Floatables Oil Sheen Other:	
Pipe benthic growth	No	Brown Orange Green Other:	

Overall Outfall Characterization

X Unlikely	Potential (presence of two or more indicators)	Suspect (one or more indicators with a severity of 3)	Obvious
------------	--	---	---------

Section 7: Data Collection

1. Sample for the lab?	Yes	X No
2. If yes, collected from:	Flow	Pool
3. Interim flow trap set?	X Yes	No
		If Yes, type: OBM 4:10 PM
		Caulk dam

Section 8: Any Non-Ilicit Discharge Concerns (e.g., trash or needed infrastructure repairs)?

Collected: 9/2/2018 10AM

Wet: NEO

Dry: NEO 9/12/2018



Subwatershed: Saw Mill River	Outfall ID: AZ27
Today's date: 9/14/2018	Time: 3:15 PM
Investigators: Caceres, Kuhn	Form completed by: <i>(signature)</i>
Temperature (°F): 69°	Rainfall (in.): Last 24 hours: 0" Last 48 hours: 0"
Latitude: 41 01.252 Longitude: 73 59.642	GPS Unit: Garmin etrex GPS LMK #:
Camera: Samsung Galaxy	Photo #s:
Land Use in Drainage Area (Check all that apply):	
Industrial	Open Space
Ultra-Urban Residential	Institutional
X Suburban Residential	Other: Nail Salon, Restaurants
X Commercial	Known Industries:

Notes (e.g., origin of outfall, if known): Route 9A

LOCATION	MATERIAL	SHAPE	DIMENSIONS (IN.)	SUBMERGED
X Closed Pipe	RCP CMP	X Circular	Single	In Water: X No
	PVC HDPE	Elliptical	Double	X Partially Fully
	X Steel	Box	Triple	
	Other:	Other:	Other:	With Sediment: X No
Open drainage	Concrete	Trapezoid	Depth:	X Partially Fully
	Earthen	Parabolic	Top Width:	
	rip-rap	Other:	Bottom Width:	
	Other:			
In-Stream (applicable when collecting samples)				
Flow Present?	X Yes	X No	If No, Skip to Section 5	
Flow Description (if present)	Trickle	Moderate	Substantial	

Outfall Reconnaissance Sheet

Temp		°F
pH		units
Ammonia		mg/l

OUTFALL RECONNAISSANCE INVENTORY FIELD SHEET

Are Any Physical Indicators Present in the flow?

INDICATOR	CHECK if Present	DESCRIPTION	RELATIVE SEVERITY INDEX (1-3)		
Odor	n/a	Sewage Rancid/sour Sulfide Other: Petroleum gas	1 - Faint	2 - Easily detected	3 - Noticeable from a distance
Color	n/a	Clear Brown, Gray Yellow Green Orange Red Other:	1 - Faint colors in sample bottle	2 - Clearly visible in sample bottle	3 - Clearly visible in outfall flow
Turbidity	n/a	See severity	1 - Slight cloudiness	2 - Cloudy	3 - Opaque
Floatables - Does Not Include Trash!!	Lots of large debris	Sewage (Toilet Paper, etc.) Suds Petroleum (oil sheen) Other:	1 - Few/slight, origin not obvious	2 - Some, indications of origin (e.g., possible suds or oil sheen)	3 - Some, origin clear (e.g., obvious oil suds, or floating sanitary materials)

Physical Indicators for Both Flowing and Non-Flowing Outfalls

Are physical indicators that are not related to flow present? Yes No (If No, Skip to Section 6)

INDICATOR	CHECK if Present	DESCRIPTION	COMMENTS
Outfall Damage	no	Spalling Cracking or Chipping Peeling Paint Corrosion	
Deposits/Stains	no	Only Flow Line Paint Other:	
Abnormal Vegetation	excessive	X Excessive Inhabited	
Poor pool quality	n/a	Odors Colors Excessive Algae Floatables Oil Sheen Other:	
Pipe benthic growth	no	Brown Orange Green Other:	

Overall Outfall Characterization

X Unlikely	Potential (presence of two or more indicators)	Suspect (one or more indicators with a severity of 3)	Obvious
------------	--	---	---------

Section 7: Data Collection

1. Sample for the lab?	Yes	X No
2. If yes, collected from:	Flow	Pool
3. Interim flow trap set?	Yes	X No
		If Yes, type: OBM
		Caulk dam

Section 8: Any Non-Ilicit Discharge Concerns (e.g., trash or needed infrastructure repairs)?

Collected:

Wet:

Dry:



Subwatershed: Saw Mill River	Outfall ID: AZ30
Today's date: 10/2/2018	Time: 1:30 PM
Investigators: Kuhn	Form completed by: <i>(signature)</i>
Temperature (°F): 63°	Rainfall (in.): Last 24 hours: 0.05" Last 48 hours: 0.012"
Latitude: Longitude:	GPS Unit: Garmin etrex GPS LMK #:
Camera: Samsung Galaxy	Photo #s:
Land Use in Drainage Area (Check all that apply):	
Industrial	X Open Space
Ultra-Urban Residential	X Institutional
X Suburban Residential	Other: Concord Rd School
Commercial	Known Industries:

Notes (e.g., origin of outfall, if known): Heatherdell Road

LOCATION	MATERIAL	SHAPE	DIMENSIONS (IN.)	SUBMERGED
X Closed Pipe	X RCP CMP	X Circular	X Single	In Water: X No
	PVC HDPE	Elliptical	Double	X Partially Fully
	Steel	Box	Triple	
	Other:	Other:	Other:	With Sediment: X No
Open drainage	Concrete	Trapezoid	Depth:	X Partially Fully
	Earthen	Parabolic	Top Width:	
	rip-rap	Other:	Bottom Width:	
	Other:			
In-Stream (applicable when collecting samples)				
Flow Present?	X Yes	X No	If No, Skip to Section 5	
Flow Description (if present)	Trickle	Moderate	Substantial	

Outfall Reconnaissance Sheet

Temp		°F
pH		units
Ammonia		mg/l

OUTFALL RECONNAISSANCE INVENTORY FIELD SHEET

Are Any Physical Indicators Present in the flow?

INDICATOR	CHECK if Present	DESCRIPTION	RELATIVE SEVERITY INDEX (1-3)		
Odor	n/a	Sewage Rancid/sour Sulfide Other: Petroleum gas	1 - Faint	2 - Easily detected	3 - Noticeable from a distance
Color	n/a	Clear Brown, Gray Yellow Green Orange Red Other:	1 - Faint colors in sample bottle	2 - Clearly visible in sample bottle	3 - Clearly visible in outfall flow
Turbidity	n/a	See severity	1 - Slight cloudiness	2 - Cloudy	3 - Opaque
Floatables - Does Not Include Trash!!	no	Sewage (Toilet Paper, etc.) Suds Petroleum (oil sheen) Other:	1 - Few/slight, origin not obvious	2 - Some, indications of origin (e.g., possible suds or oil sheen)	3 - Some, origin clear (e.g., obvious oil suds, or floating sanitary materials)

Physical Indicators for Both Flowing and Non-Flowing Outfalls

Are physical indicators that are not related to flow present? Yes No (If No, Skip to Section 6)

INDICATOR	CHECK if Present	DESCRIPTION	COMMENTS
Outfall Damage	No	Spalling Cracking or Chipping Peeling Paint Corrosion	
Deposits/Stains	No	Only Flow Line Paint Other:	
Abnormal Vegetation	No	Excessive Inhabited	
Poor pool quality	n/a	Odors Colors Excessive Algae Floatables Oil Sheen Other:	
Pipe benthic growth	no	Brown Orange Green Other:	

Overall Outfall Characterization

X Unlikely	Potential (presence of two or more indicators)	Suspect (one or more indicators with a severity of 3)	Obvious
------------	--	---	---------

Section 7: Data Collection

1. Sample for the lab?	Yes	X No
2. If yes, collected from:	Flow	Pool
3. Interim flow trap set?	Yes	X No
		If Yes, type: OBM
		Caulk dam

Section 8: Any Non-Ilicit Discharge Concerns (e.g., trash or needed infrastructure repairs)?

Collected:

Wet:

Dry:



MS4 Annual Report Form

This report is being submitted for the reporting period ending March 9, 2019

If submitting this form as part of a joint report on behalf of a coalition leave SPDES ID blank.

Name of MS4/Coalition Village of Ardsley

SPDES ID

N Y R 2 0 A 3 1 6

Subwatershed: Saw Mill River
 Today's date: 10/12/2018
 Investigators: Caceres, Kuhn
 Temperature (°F): 59.2
 Rainfall (in.): Last 24 hours: 0.34" Last 48 hours: 1.41"
 Latitude: Longitude: GPS Unit: Garmin stux GPS LMK #: Photo #:
 Camera: Samsung Galaxy
 Land Use in Drainage Area (Check all that apply):
 Industrial: X Institutional
 Ultra-Urban Residential: X
 Suburban Residential: X
 Commercial: X
 Outfall ID: AZ50
 Time: 3:30 PM
 Form completed by: [Signature]
 GPS Unit: Garmin stux GPS LMK #: Photo #:
 Other: Concord Rd School
 Known Industries:

Outfall Reconnaissance Sheet

Notes (e.g., origin of outfall, if known): Headedell Road

LOCATION	MATERIAL	SHAPE	DIMENSIONS (IN.)	SUBMERGED
X Closed Pipe	X RCP CMP	X Circular	X Single	In Water: No
	PVC HDPE	Elliptical	Double	Partially Fully
	Steel	Box	Triple	With Sediment: X No
	Other:	Other:	Other:	Partially Fully
Open drainage	Concrete	Trapezoid	Depth:	
	Earthen	Parabolic	Top Width:	
	rip-rap	Other:	Bottom Width:	
	Other:	Other:	Other:	
In-Stream (applicable when collecting samples)				
Flow Present? X Yes No If No, Skip to Section 5				
Flow Description (if present): Trickle X Moderate Substantial				

Temp	68	°F
pH	7.0	units
Ammonia	0	mg/L

PARAMETER	RESULT	UNIT	AVERAGE FLOW RATE (gal/min)	EQUIPMENT
Flow #1	Volume	Liter		Bottle
	Time to fill	Sec		Stop watch
Flow #2	Flow depth	0' 1"	7.29 gal/min	Tape measure
	Flow width	0' 7"		Tape measure
	Measured length	1' 0"		
	Time of travel	2.31, 3.05, 4.05, 3.60, 1.95		

Subwatershed: Bronx River/Sprain Brook
 Today's date: 11/16/2018
 Investigators: Caceres, Kuhn
 Temperature (°F): 33.9
 Rainfall (in.): Last 24 hours: 0.24" Last 48 hours: 1.57"
 Latitude: Longitude: GPS Unit: Garmin stux GPS LMK #: Photo #:
 Camera: Samsung Galaxy
 Land Use in Drainage Area (Check all that apply):
 Industrial: X Institutional OLPH School
 Ultra-Urban Residential: X
 Suburban Residential: X
 Commercial: X
 Outfall ID: AZ41
 Time: 2:30 PM
 Form completed by: [Signature]
 GPS Unit: Garmin stux GPS LMK #: Photo #:
 Other: Known Industries:

Outfall Reconnaissance Sheet

Notes (e.g., origin of outfall, if known): Abington Creek

LOCATION	MATERIAL	SHAPE	DIMENSIONS (IN.)	SUBMERGED
X Closed Pipe	RCP X CMP	X Circular	X Single	In Water: No
	PVC HDPE	Elliptical	Double	Partially Fully
	Steel	Box	Triple	With Sediment: X No
	Other:	Other:	Other:	Partially Fully
Open drainage	Concrete	Trapezoid	Depth:	
	Earthen	Parabolic	Top Width:	
	rip-rap	Other:	Bottom Width:	
	Other:	Other:	Other:	
In-Stream (applicable when collecting samples)				
Flow Present? X Yes No If No, Skip to Section 5				
Flow Description (if present): Trickle Moderate X Substantial				

Temp	48	°F
pH	6.5	units
Ammonia	0	mg/L

PARAMETER	RESULT	UNIT	AVERAGE FLOW RATE (gal/min)	EQUIPMENT
Flow #1	Volume	Liter		Bottle
	Time to fill	Sec		Stop watch
Flow #2	Flow depth	0' 3"	249.3 gal/min	Tape measure
	Flow width	2' 2"		Tape measure
	Measured length	2' 0"		
	Time of travel	1.65", 2.13", 2.06", 2.00", 1.91"		

Subwatershed: Saw Mill River
 Today's date: 12/7/2018
 Investigators: Caceres, Kuhn
 Temperature (°F): 33.9
 Rainfall (in.): Last 24 hours: 0" Last 48 hours: 0"
 Latitude: Longitude: GPS Unit: Garmin stux GPS LMK #: Photo #:
 Camera: Samsung Galaxy
 Land Use in Drainage Area (Check all that apply):
 Industrial: X
 Ultra-Urban Residential: X
 Suburban Residential: X
 Commercial: X
 Outfall ID: AZ6
 Time: 3:30 PM
 Form completed by: [Signature]
 GPS Unit: Garmin stux GPS LMK #: Photo #:
 Other: Known Industries: Bakery, Medical Offices, Restaurant, Auto Body

Outfall Reconnaissance Sheet

Notes (e.g., origin of outfall, if known): Bramble Brook

LOCATION	MATERIAL	SHAPE	DIMENSIONS (IN.)	SUBMERGED
X Closed Pipe	X RCP CMP	X Circular	X Single	In Water: No
	PVC HDPE	Elliptical	Double	Partially Fully
	Steel	Box	Triple	With Sediment: No
	Other:	Other:	Other:	Partially Fully
Open drainage	Concrete	Trapezoid	Depth:	
	Earthen	Parabolic	Top Width:	
	rip-rap	Other:	Bottom Width:	
	Other:	Other:	Other:	
In-Stream (applicable when collecting samples)				
Flow Present? X Yes No If No, Skip to Section 5				
Flow Description (if present): Trickle Moderate X Substantial				

Temp	44	°F
pH	7.0	units
Ammonia	0	mg/L

PARAMETER	RESULT	UNIT	AVERAGE FLOW RATE (gal/min)	EQUIPMENT
Flow #1	Volume	Liter		Bottle
	Time to fill	Sec		Stop watch
Flow #2	Flow depth	0' 2"	455 gal/min	Tape measure
	Flow width	4' 7"		Tape measure
	Measured length	3' 2"		
	Time of travel	2.37", 2.29", 2.12", 2.28", 2.87"		

OUTFALL RECONNAISSANCE INVENTORY FIELD SHEET

INDICATOR	CHECK if Present	DESCRIPTION	RELATIVE SEVERITY INDEX (1-3)		
Odor	No	Sewage Rancid/sour Sulfide Other: Petroleum gas	1 - Faint	2 - Easily detected	3 - Noticeable from a distance
Color	No	Clear Brown, Gray Yellow Green Orange Red Other:	1 - Faint colors in sample bottle	2 - Clearly visible in sample bottle	3 - Clearly visible in outfall flow
Turbidity	Clear	See severity	1 - Slight cloudiness	2 - Cloudy	3 - Opaque
Floatables - Does Not Include Trash!	no	Sewage (Toilet Paper, etc.) Suds Petroleum (oil sheen) Other:	1 - Few/slight, origin not obvious	2 - Some, indications of origin (e.g., possible suds or oil sheen)	3 - Some, origin clear (e.g., obvious oil suds, or floating sanitary materials)

Physical Indicators for Both Flowing and Non-Flowing Outfalls

INDICATOR	CHECK if Present	DESCRIPTION	COMMENTS
Outfall Damage	No	Spalling Cracking or Chipping Peeling Paint Corrosion	
Deposits/Stains	No	Only Flow Line Paint Other:	
Abnormal Vegetation	No	Excessive Inhibited	
Poor pool quality	No	Odors Colors Floatables Oil Sheen	
Pipe benthic growth	No	Brown Orange Green Other:	

Overall Outfall Characterization

X Unlikely	Potential (presence of two or more indicators)	Suspect (one or more indicators with a severity of 3)	Obvious
------------	--	---	---------

Section 7: Data Collection

1. Sample for the lab?	Yes	X No
2. If yes, collected from:	Flow	Pool
3. Intermittent flow trap set?	X Yes	No If Yes, type: X OBM Caulk dam 3:57 PM

Section 8: Any Non-Illic Discharge Concerns (e.g., trash or needed infrastructure repairs)?

Collected: 10/14/2018 10AM

Wet: NEG Dry: NEG 11/1/2018



OUTFALL RECONNAISSANCE INVENTORY FIELD SHEET

INDICATOR	CHECK if Present	DESCRIPTION	RELATIVE SEVERITY INDEX (1-3)		
Odor	No	Sewage Rancid/sour Sulfide Other: Petroleum gas	1 - Faint	2 - Easily detected	3 - Noticeable from a distance
Color	Light brown	Clear X Brown Gray Yellow Green Orange Red Other:	X 1 - Faint colors in sample bottle	2 - Clearly visible in sample bottle	3 - Clearly visible in outfall flow
Turbidity	Very slight	See severity	X 1 - Slight cloudiness	2 - Cloudy	3 - Opaque
Floatables - Does Not Include Trash!	no	Sewage (Toilet Paper, etc.) Suds Petroleum (oil sheen) Other:	1 - Few/slight, origin not obvious	2 - Some, indications of origin (e.g., possible suds or oil sheen)	3 - Some, origin clear (e.g., obvious oil suds, or floating sanitary materials)

Physical Indicators for Both Flowing and Non-Flowing Outfalls

INDICATOR	CHECK if Present	DESCRIPTION	COMMENTS
Outfall Damage	No	Spalling Cracking or Chipping Peeling Paint Corrosion	
Deposits/Stains	No	Only Flow Line Paint Other:	
Abnormal Vegetation	No	Excessive Inhibited	
Poor pool quality	No	Odors Colors Floatables Oil Sheen	
Pipe benthic growth	No	Brown Orange Green Other:	

Overall Outfall Characterization

X Unlikely	Potential (presence of two or more indicators)	Suspect (one or more indicators with a severity of 3)	Obvious
------------	--	---	---------

Section 7: Data Collection

1. Sample for the lab?	Yes	X No
2. If yes, collected from:	Flow	Pool
3. Intermittent flow trap set?	X Yes	No If Yes, type: X OBM Caulk dam 3:30 PM

Section 8: Any Non-Illic Discharge Concerns (e.g., trash or needed infrastructure repairs)?

Collected: 11/19/2018 3 PM

Wet: NEG Dry: NEG 11/29/2018



Gave out 2 letters to resident

OUTFALL RECONNAISSANCE INVENTORY FIELD SHEET

INDICATOR	CHECK if Present	DESCRIPTION	RELATIVE SEVERITY INDEX (1-3)		
Odor	No	Sewage Rancid/sour Sulfide Other: Petroleum gas	1 - Faint	2 - Easily detected	3 - Noticeable from a distance
Color	Clear	Clear Brown, Gray Yellow Green Orange Red Other:	1 - Faint colors in sample bottle	2 - Clearly visible in sample bottle	3 - Clearly visible in outfall flow
Turbidity	Clear	See severity	1 - Slight cloudiness	2 - Cloudy	3 - Opaque
Floatables - Does Not Include Trash!	no	Sewage (Toilet Paper, etc.) Suds Petroleum (oil sheen) Other:	1 - Few/slight, origin not obvious	2 - Some, indications of origin (e.g., possible suds or oil sheen)	3 - Some, origin clear (e.g., obvious oil suds, or floating sanitary materials)

Physical Indicators for Both Flowing and Non-Flowing Outfalls

INDICATOR	CHECK if Present	DESCRIPTION	COMMENTS
Outfall Damage	No	Spalling Cracking or Chipping Peeling Paint Corrosion	
Deposits/Stains	No	Only Flow Line Paint Other:	
Abnormal Vegetation	No	Excessive Inhibited	
Poor pool quality	No	Odors Colors Floatables Oil Sheen	
Pipe benthic growth	no	Brown Orange Green Other:	

Overall Outfall Characterization

X Unlikely	Potential (presence of two or more indicators)	Suspect (one or more indicators with a severity of 3)	Obvious
------------	--	---	---------

Section 7: Data Collection

1. Sample for the lab?	Yes	X No
2. If yes, collected from:	Flow	Pool
3. Intermittent flow trap set?	X Yes	No If Yes, type: X OBM 3:40 PM Caulk dam

Section 8: Any Non-Illic Discharge Concerns (e.g., trash or needed infrastructure repairs)?

Collected: 12/9/2018 10 AM

Wet: NEG Dry: NEG 12/12/2018



MS4 Annual Report Form

This report is being submitted for the reporting period ending March 9, 2019

If submitting this form as part of a joint report on behalf of a coalition leave SPDES ID blank.

Name of MS4/Coalition Village of Ardsley

SPDES ID

N Y R 2 0 A 3 1 6

Subwatershed: Saw Mill River
Today's date: 12/17/2018
Investigator: Kuba
Form completed by: (Signature)
Temperature (°F): 43° **Rainfall (in.):** Last 24 hours: 1" Last 48 hours: 2.3"
Latitude: 41.00.496 **Longitude:** 73.50.839 **GPS Unit:** Garmin etrex **GPS LMK #:**
Camera: Samsung Galaxy
Land Use in Drainage Area (Check all that apply):
 Industrial ☐ Open Space ☐
 Ultra-Urban Residential ☐ Institutional ☐
 X Suburban Residential ☒ Other: Known Industries ☐
 Commercial ☐

Outfall Reconnaissance Sheet

Notes (e.g., origin of outfall, if known): Bramble Brook

LOCATION	MATERIAL	SHAPE	DIMENSIONS (IN.)	SUBMERGED
X Closed Pipe	RCP CMP	X Circular	X Single	In Water: No Partially Fully With Sediment: No Partially Fully
	PVC HDPE	Elliptical	Double	
	X Steel	Box	Triple	
	Other:	Other:	Other:	
Open drainage	Concrete	Trapezoid	Depth:	Top Width: Bottom Width:
	Earthen	Parabolic		
	rip-rap	Other:		
	Other:	Other:		

In-Stream (applicable when collecting samples)
Flow Present? Yes ☒ No ☐ If No, Skip to Section 5
Flow Description (if present): Trickle Moderate Substantial

Temp 48 °F
 pH 6.8 units
 Ammonia 0 mg/L

PARAMETER	RESULT	UNIT	AVERAGE FLOW RATE (gal/min)	EQUIPMENT
Flow #1	Volume	Liter		Bottle
	Time to fill	Sec		Stop watch
Flow #2	Flow depth	" "		Tape measure
	Flow width	" "		Tape measure
	Measured length	" "		Tape measure
	Time of travel	Sec		Stop watch

Subwatershed: Saw Mill River
Today's date: 12/17/2018
Investigator: Kuba
Form completed by: (Signature)
Temperature (°F): 41° **Rainfall (in.):** Last 24 hours: 1" Last 48 hours: 2.3"
Latitude: 41.00.496 **Longitude:** 73.50.839 **GPS Unit:** Garmin etrex **GPS LMK #:**
Camera: Samsung Galaxy
Land Use in Drainage Area (Check all that apply):
 Industrial ☐ Open Space ☐
 Ultra-Urban Residential ☐ Institutional ☐
 X Suburban Residential ☒ Other: Known Industries ☐
 Commercial ☐

Outfall Reconnaissance Sheet

Notes (e.g., origin of outfall, if known): Bramble Brook

LOCATION	MATERIAL	SHAPE	DIMENSIONS (IN.)	SUBMERGED
X Closed Pipe	RCP CMP	X Circular	X Single	In Water: No Partially Fully With Sediment: No Partially Fully
	PVC HDPE	Elliptical	Double	
	X Steel	Box	Triple	
	Other:	Other:	Other:	
Open drainage	Concrete	Trapezoid	Depth:	Top Width: Bottom Width:
	Earthen	Parabolic		
	rip-rap	Other:		
	Other:	Other:		

In-Stream (applicable when collecting samples)
Flow Present? X Yes ☒ No ☐ If No, Skip to Section 5
Flow Description (if present): Trickle X Moderate Substantial

Temp 48 °F
 pH 6.8 units
 Ammonia 0 mg/L

PARAMETER	RESULT	UNIT	AVERAGE FLOW RATE (gal/min)	EQUIPMENT
Flow #1	Volume	Liter		Bottle
	Time to fill	Sec		Stop watch
Flow #2	Flow depth	0' 4"	172.6 gal/min	Tape measure
	Flow width	1' 10"		Tape measure
	Measured length	1' 6"		Tape measure
	Time of travel	2.65", 2.09", 2.40", 1.72", 3.06"		Stop watch

Subwatershed: Sprain Brook/Bronx River
Today's date: 12/21/2018
Investigator: Cicero, Kuba
Form completed by: (Signature)
Temperature (°F): 59° **Rainfall (in.):** Last 24 hours: 3.27" Last 48 hours: 3.27"
Latitude: -W 73.50596 **Longitude:** N 41.04453 **GPS Unit:** Garmin etrex **GPS LMK #:**
Camera: Samsung Galaxy
Land Use in Drainage Area (Check all that apply):
 Industrial ☐ Open Space ☐
 Ultra-Urban Residential ☐ X Institutional OLPH School ☒
 X Suburban Residential ☐ Other: Known Industries ☐
 Commercial ☐

Outfall Reconnaissance Sheet

Notes (e.g., origin of outfall, if known): OLPH parking lot runoff

LOCATION	MATERIAL	SHAPE	DIMENSIONS (IN.)	SUBMERGED
X Closed Pipe	RCP X CMP	X Circular	Single	In Water: X No Partially Fully With Sediment: X No Partially Fully
	PVC HDPE	Elliptical	Double	
	Steel	Box	Triple	
	Other:	Other:	Other:	
Open drainage	Concrete	Trapezoid	Depth:	Top Width: Bottom Width:
	Earthen	Parabolic		
	rip-rap	Other:		
	Other:	Other:		

In-Stream (applicable when collecting samples)
Flow Present? Yes ☒ No ☐ If No, Skip to Section 5
Flow Description (if present): Trickle Moderate Substantial

Temp 58 °F
 pH Ammonia mg/L

PARAMETER	RESULT	UNIT	AVERAGE FLOW RATE (gal/min)	EQUIPMENT
Flow #1	Volume	Liter		Bottle
	Time to fill	Sec		Stop watch
Flow #2	Flow depth	" "		Tape measure
	Flow width	" "		Tape measure
	Measured length	" "		Tape measure
	Time of travel	Sec		Stop watch

OUTFALL RECONNAISSANCE INVENTORY FIELD SHEET
 Are Any Physical Indicators Present in the flow? Yes No

INDICATOR	CHECK if Present	DESCRIPTION	RELATIVE SEVERITY INDEX (1-3)
Odor	n/a	Sewage Rancid/sour Sulfide Other: Petroleum/gas	1 - Faint 2 - Easily detected 3 - Noticeable from a distance
Color	n/a	Clear Brown, Gray Yellow Green Orange Red Other: See severity	1 - Faint colors in sample bottle 2 - Clearly visible in sample bottle 3 - Clearly visible in outfall flow
Turbidity	n/a	See severity	1 - Slight cloudiness 2 - Cloudy 3 - Opaque
Floatables	n/a	Sewage (Toilet Paper, etc.) Soda Petroleum (oil sheen) Other: See severity	1 - Few/slight, origin not obvious 2 - Some, indications of origin (e.g., possible suds or oil sheen) 3 - Some, origin clear (e.g., obvious oil suds, or floating sanitary materials)
-Does Not Include Trash!!	Leaves	Petroleum (oil sheen) Other: See severity	1 - Few/slight, origin not obvious 2 - Some, indications of origin (e.g., possible suds or oil sheen) 3 - Some, origin clear (e.g., obvious oil suds, or floating sanitary materials)

Physical Indicators for Both Flowing and Non-Flowing Outfalls
 Are physical indicators that are not related to flow present? Yes No (If No, Skip to Section 6)

INDICATOR	CHECK if Present	DESCRIPTION	COMMENTS
Outfall Damage	no	Spalling Cracking or Chipping Peeling Paint Corrosion	
Deposits/Stains	no	Only Flow Line Paint Other: See severity	
Abnormal Vegetation	no	Excessive Inhabited	
Poor pool quality	no	Odors Colors Excessive Algae Floatables Oil Sheen Other: See severity	
Pipe benthic growth	no	Brown Orange Green Other: See severity	

Overall Outfall Characterization

X Unlikely	Potential (presence of two or more indicators)	Suspect (one or more indicators with a severity of 3)	Obvious

Section 7: Data Collection

1. Sample for the lab?	Yes	X No
2. If yes, collected from:	Flow	Pool
3. Intermittent flow trap set?	Yes	X No
		If Yes, type: OBM Caulk dam

Section 8: Any Non-Illicit Discharge Concerns (e.g., trash or needed infrastructure repairs)? no
 Collected: Wet: Dry:



OUTFALL RECONNAISSANCE INVENTORY FIELD SHEET
 Are Any Physical Indicators Present in the flow? Yes No

INDICATOR	CHECK if Present	DESCRIPTION	RELATIVE SEVERITY INDEX (1-3)
Odor	No	Sewage Rancid/sour Sulfide Other: Petroleum/gas	1 - Faint 2 - Easily detected 3 - Noticeable from a distance
Color	Faint yellow	Clear Brown, Gray Yellow Green Orange Red Other: See severity	X1 - Faint colors in sample bottle 2 - Clearly visible in sample bottle 3 - Clearly visible in outfall flow
Turbidity	clear	See severity	1 - Slight cloudiness 2 - Cloudy 3 - Opaque
Floatables	no	Sewage (Toilet Paper, etc.) Soda Petroleum (oil sheen) Other: See severity	1 - Few/slight, origin not obvious 2 - Some, indications of origin (e.g., possible suds or oil sheen) 3 - Some, origin clear (e.g., obvious oil suds, or floating sanitary materials)
-Does Not Include Trash!!	Leaves	Petroleum (oil sheen) Other: See severity	1 - Few/slight, origin not obvious 2 - Some, indications of origin (e.g., possible suds or oil sheen) 3 - Some, origin clear (e.g., obvious oil suds, or floating sanitary materials)

Physical Indicators for Both Flowing and Non-Flowing Outfalls
 Are physical indicators that are not related to flow present? Yes No (If No, Skip to Section 6)

INDICATOR	CHECK if Present	DESCRIPTION	COMMENTS
Outfall Damage	no	Spalling Cracking or Chipping Peeling Paint Corrosion	
Deposits/Stains	Flow line	Only Flow Line Paint Other: See severity	
Abnormal Vegetation	no	Excessive Inhabited	
Poor pool quality	no	Odors Colors Excessive Algae Floatables Oil Sheen Other: See severity	
Pipe benthic growth	no	Brown Orange Green Other: See severity	

Overall Outfall Characterization

X Unlikely	Potential (presence of two or more indicators)	Suspect (one or more indicators with a severity of 3)	Obvious

Section 7: Data Collection

1. Sample for the lab?	Yes	X No
2. If yes, collected from:	Flow	Pool
3. Intermittent flow trap set?	X Yes	No
		If Yes, type: X OBM 1:20 PM Caulk dam

Section 8: Any Non-Illicit Discharge Concerns (e.g., trash or needed infrastructure repairs)? no
 Collected: 12/18/2018 2 PM
 Wet: NEG
 Dry: NEG 12/21/2018



OUTFALL RECONNAISSANCE INVENTORY FIELD SHEET
 Are Any Physical Indicators Present in the flow? Yes No

INDICATOR	CHECK if Present	DESCRIPTION	RELATIVE SEVERITY INDEX (1-3)
Odor	n/a	Sewage Rancid/sour Sulfide Other: Petroleum/gas	1 - Faint 2 - Easily detected 3 - Noticeable from a distance
Color	n/a	Clear Brown, Gray Yellow Green Orange Red Other: See severity	1 - Faint colors in sample bottle 2 - Clearly visible in sample bottle 3 - Clearly visible in outfall flow
Turbidity	n/a	See severity	1 - Slight cloudiness 2 - Cloudy 3 - Opaque
Floatables	n/a	Sewage (Toilet Paper, etc.) Soda Petroleum (oil sheen) Other: See severity	1 - Few/slight, origin not obvious 2 - Some, indications of origin (e.g., possible suds or oil sheen) 3 - Some, origin clear (e.g., obvious oil suds, or floating sanitary materials)
-Does Not Include Trash!!	Leaves	Petroleum (oil sheen) Other: See severity	1 - Few/slight, origin not obvious 2 - Some, indications of origin (e.g., possible suds or oil sheen) 3 - Some, origin clear (e.g., obvious oil suds, or floating sanitary materials)

Physical Indicators for Both Flowing and Non-Flowing Outfalls
 Are physical indicators that are not related to flow present? Yes No (If No, Skip to Section 6)

INDICATOR	CHECK if Present	DESCRIPTION	COMMENTS
Outfall Damage	No	Spalling Cracking or Chipping Peeling Paint Corrosion	
Deposits/Stains	yes	Only Flow Line Paint Other: See severity	
Abnormal Vegetation	yes	Excessive X Inhabited	
Poor pool quality	no	Odors Colors Excessive Algae Floatables Oil Sheen Other: See severity	
Pipe benthic growth	no	Brown Orange Green Other: See severity	

Overall Outfall Characterization

X Unlikely	Potential (presence of two or more indicators)	Suspect (one or more indicators with a severity of 3)	Obvious

Section 7: Data Collection

1. Sample for the lab?	Yes	X No
2. If yes, collected from:	Flow	Pool
3. Intermittent flow trap set?	Yes	X No
		If Yes, type: OBM Caulk dam

Section 8: Any Non-Illicit Discharge Concerns (e.g., trash or needed infrastructure repairs)?
 Collected: Wet: Dry:



MS4 Annual Report Form

This report is being submitted for the reporting period ending March 9, 2019

If submitting this form as part of a joint report on behalf of a coalition leave SPDES ID blank.

SPDES ID

N Y R 2 0 A 3 1 6

Name of MS4/Coalition Village of Ardsley

Subwatershed: Saw Mill River		Outfall ID: AZ25	
Today's date: 1/11/2019		Time: 3:20 PM	
Investigators: Caceres, Kuhn		Form completed by: <i>(Signature)</i>	
Temperature (°F): 33°		Rainfall (in.): Last 24 hours: 0" Last 48 hours: 0"	
Latitude: 41.00.817	Longitude: 73.50.817	GPS Unit: Garmin etrex	GPS LMK #:
Camera: Samsung Galaxy		Photo #s:	
Land Use in Drainage Area (Check all that apply):		Open Space	
Industrial		Institutional	
Ultra-Urban Residential		Other: NYS Thruway	
Suburban Residential		Known Industries:	
Commercial			

LOCATION	MATERIAL	SHAPE	DIMENSIONS (IN.)	SUBMERGED
X Closed Pipe	X RCP CMP	X Circular	X Single	In Water: No
	PVC HDPE	Elliptical	Double	Partially Fully
	Steel	Box	Triple	With Sediment: No
	Other:	Other:	Other:	Partially Fully
Open drainage	Concrete	Trapezoid	Depth:	
	Earthen	Parabolic	Top Width:	
	rip-rap	Other:	Bottom Width:	
	Other:			
In-Stream (applicable when collecting samples)				
Flow Present?	X Yes	No	If No, Skip to Section 5	
Flow Description (If present)	Trickle	X Moderate	Substantial	

Outfall Reconnaissance Sheet

Temp 50 °F
pH 6.8 units
Ammonia 0 mg/l

PARAMETER	RESULT	UNIT	AVERAGE FLOW RATE (gal/min)	EQUIPMENT
Flow #1	Volume	Liter		Bottle
	Time to fill	Sec		Stop watch
Flow #2	Flow depth	0" 2"	Ft. In	Tape measure
	Flow width	0" 10"	Ft. In	Tape measure
	Measured length		Ft. In	Tape measure
	Time of travel	2.00", 2.22", 1.82", 2.13", 2.06"	Sec	Stop watch

Subwatershed: Saw Mill River		Outfall ID: AZ13	
Today's date: 1/11/2019		Time: 3:20 PM	
Investigators: Caceres, Kuhn		Form completed by: <i>(Signature)</i>	
Temperature (°F): 30°		Rainfall (in.): Last 24 hours: 0" Last 48 hours: 0"	
Latitude: 41.00.817	Longitude: 73.50.817	GPS Unit: Garmin etrex	GPS LMK #:
Camera: Samsung Galaxy		Photo #s:	
Land Use in Drainage Area (Check all that apply):		Open Space	
Industrial		Institutional	
Ultra-Urban Residential		Other:	
Suburban Residential		Known Industries: Tire Store, Restaurant, Doctors Office	
Commercial			

LOCATION	MATERIAL	SHAPE	DIMENSIONS (IN.)	SUBMERGED
X Closed Pipe	RCP CMP	X Circular	X Single	In Water: X No
	PVC HDPE	Elliptical	Double	Partially Fully
	X Steel	Box	Triple	With Sediment: X No
	Other:	Other:	Other:	Partially Fully
Open drainage	Concrete	Trapezoid	Depth:	
	Earthen	Parabolic	Top Width:	
	rip-rap	Other:	Bottom Width:	
	Other:			
In-Stream (applicable when collecting samples)				
Flow Present?	X Yes	No	If No, Skip to Section 5	
Flow Description (If present)	Trickle	Moderate	Substantial	

Outfall Reconnaissance Sheet

Temp 50 °F
pH 6.8 units
Ammonia 0 mg/l

PARAMETER	RESULT	UNIT	AVERAGE FLOW RATE (gal/min)	EQUIPMENT
Flow #1	Volume	Liter		Bottle
	Time to fill	Sec		Stop watch
Flow #2	Flow depth	" "	Ft. In	Tape measure
	Flow width	" "	Ft. In	Tape measure
	Measured length	" "	Ft. In	Tape measure
	Time of travel		Sec	Stop watch

Subwatershed: Saw Mill River		Outfall ID: AZ14	
Today's date: 1/25/2019		Time: 3:20 PM	
Investigators: Caceres, Kuhn		Form completed by: <i>(Signature)</i>	
Temperature (°F): 36°		Rainfall (in.): Last 24 hours: 1.9" Last 48 hours: 1.9"	
Latitude: N 41.00.731	Longitude: W 73.50.848	GPS Unit: Garmin etrex	GPS LMK #:
Camera: Samsung Galaxy		Photo #s:	
Land Use in Drainage Area (Check all that apply):		Open Space	
Industrial		Institutional	
Ultra-Urban Residential		Other:	
Suburban Residential		Known Industries: Laundry, Dry Cleaners, Veterinarian, Restaurants	
Commercial			

LOCATION	MATERIAL	SHAPE	DIMENSIONS (IN.)	SUBMERGED
X Closed Pipe	X RCP CMP	X Circular	X Single	In Water: No
	PVC HDPE	Elliptical	Double	Partially Fully
	Steel	Box	Triple	With Sediment: No
	Other:	Other:	Other:	Partially Fully
Open drainage	Concrete	Trapezoid	Depth:	
	Earthen	Parabolic	Top Width:	
	rip-rap	Other:	Bottom Width:	
	Other:			
In-Stream (applicable when collecting samples)				
Flow Present?	X Yes	No	If No, Skip to Section 5	
Flow Description (If present)	Trickle	Moderate	Substantial	

Outfall Reconnaissance Sheet

Temp 48 °F
pH 6.8 units
Ammonia 0 mg/l

PARAMETER	RESULT	UNIT	AVERAGE FLOW RATE (gal/min)	EQUIPMENT
Flow #1	Volume	Liter		Bottle
	Time to fill	Sec		Stop watch
Flow #2	Flow depth	" "	Ft. In	Tape measure
	Flow width	" "	Ft. In	Tape measure
	Measured length	" "	Ft. In	Tape measure
	Time of travel		Sec	Stop watch

OUTFALL RECONNAISSANCE INVENTORY FIELD SHEET

INDICATOR	CHECK if Present	DESCRIPTION	RELATIVE SEVERITY INDEX (1-3)		
Odor	No	Sewage Rancid/sour Sulfide Other: Petroleum gas	1 - Faint	2 - Easily detected	3 - Noticeable from a distance
Color	No	Clear Brown, Gray Yellow Green Orange Red Other:	1 - Faint colors in sample bottle	2 - Clearly visible in sample bottle	3 - Clearly visible in outfall flow
Turbidity	No	See severity	1 - Slight cloudiness	2 - Cloudy	3 - Opaque
Floatables -Does Not Include Trash!!	No	Sewage (Toilet Paper, etc.) Suds Petroleum (oil sheen) Other:	1 - Few/slight, origin not obvious	2 - Some, indications of origin (e.g. possible suds or oil sheen)	3 - Some, origin clear (e.g. obvious oil suds, or floating sanitary materials)

Physical Indicators for Both Flowing and Non-Flowing Outfalls

Are physical indicators that are not related to flow present? Yes No (If No, Skip to Section 6)

INDICATOR	CHECK if Present	DESCRIPTION	COMMENTS
Outfall Damage	No	Spalling Cracking or Chipping Peeling Paint Corrosion	
Deposits/Stains	Yes	Only X Flow Line Paint Other: Orange (sign)	
Abnormal Vegetation	No	Excessive Inhabited	
Poor pool quality	No	Odors Colors Sulfide Floatables Oil Sheen	
Pipe benthic growth	No	Brown Orange Green Other:	

Overall Outfall Characterization

X Unlikely	Potential (presence of two or more indicators)	Suspect (one or more indicators with a severity of 3)	Obvious
------------	--	---	---------

Section 7: Data Collection

1. Sample for the lab?	Yes	X No
2. If yes, collected from:	Flow	Pool
3. Interim flow trap set?	X Yes	No If Yes, type: X OBM Caulk dam 3:46 PM

Section 8: Any Non-Ilicit Discharge Concerns (e.g., trash or needed infrastructure repairs)?

Collected: 1/6/2019 4 PM
Wet: NEG
Dry: NEG 1/9/2019



OUTFALL RECONNAISSANCE INVENTORY FIELD SHEET

INDICATOR	CHECK if Present	DESCRIPTION	RELATIVE SEVERITY INDEX (1-3)		
Odor	n/a	Sewage Rancid/sour Sulfide Other: Petroleum gas	1 - Faint	2 - Easily detected	3 - Noticeable from a distance
Color	n/a	Clear Brown, Gray Yellow Green Orange Red Other:	1 - Faint colors in sample bottle	2 - Clearly visible in sample bottle	3 - Clearly visible in outfall flow
Turbidity	n/a	See severity	1 - Slight cloudiness	2 - Cloudy	3 - Opaque
Floatables -Does Not Include Trash!!	n/a	Sewage (Toilet Paper, etc.) Suds Petroleum (oil sheen) Other:	1 - Few/slight, origin not obvious	2 - Some, indications of origin (e.g. possible suds or oil sheen)	3 - Some, origin clear (e.g. obvious oil suds, or floating sanitary materials)

Physical Indicators for Both Flowing and Non-Flowing Outfalls

Are physical indicators that are not related to flow present? Yes No (If No, Skip to Section 6)

INDICATOR	CHECK if Present	DESCRIPTION	COMMENTS
Outfall Damage	No	Spalling Cracking or Chipping Peeling Paint Corrosion	
Deposits/Stains	No	Only X Flow Line Paint Other:	
Abnormal Vegetation	Yes	Excessive X Inhabited	
Poor pool quality	No	Odors Colors Sulfide Floatables Oil Sheen	
Pipe benthic growth	No	Brown Orange Green Other:	

Overall Outfall Characterization

X Unlikely	Potential (presence of two or more indicators)	Suspect (one or more indicators with a severity of 3)	Obvious
------------	--	---	---------

Section 7: Data Collection

1. Sample for the lab?	Yes	X No
2. If yes, collected from:	Flow	Pool
3. Interim flow trap set?	Yes	X No If Yes, type: OBM Caulk dam

Section 8: Any Non-Ilicit Discharge Concerns (e.g., trash or needed infrastructure repairs)?

Collected: Wet:
Dry:



OUTFALL RECONNAISSANCE INVENTORY FIELD SHEET

INDICATOR	CHECK if Present	DESCRIPTION	RELATIVE SEVERITY INDEX (1-3)		
Odor	No	Sewage Rancid/sour Sulfide Other: Petroleum gas	1 - Faint	2 - Easily detected	3 - Noticeable from a distance
Color	clear	Clear Brown, Gray Yellow Green Orange Red Other:	1 - Faint colors in sample bottle	2 - Clearly visible in sample bottle	3 - Clearly visible in outfall flow
Turbidity	clear	See severity	1 - Slight cloudiness	2 - Cloudy	3 - Opaque
Floatables -Does Not Include Trash!!	Slight oil sheen	Sewage (Toilet Paper, etc.) Suds X Petroleum (oil sheen) Other:	1 - Few/slight, origin not obvious	2 - Some, indications of origin (e.g. possible suds or oil sheen)	3 - Some, origin clear (e.g. obvious oil suds, or floating sanitary materials)

Physical Indicators for Both Flowing and Non-Flowing Outfalls

Are physical indicators that are not related to flow present? Yes No (If No, Skip to Section 6)

INDICATOR	CHECK if Present	DESCRIPTION	COMMENTS
Outfall Damage	No	Spalling Cracking or Chipping Peeling Paint Corrosion	
Deposits/Stains	Flow line	Only X Flow Line Paint Other:	
Abnormal Vegetation	No	Excessive Inhabited	
Poor pool quality	no	Odors Colors Sulfide Floatables Oil Sheen	
Pipe benthic growth	no	Brown Orange Green Other:	

Overall Outfall Characterization

X Unlikely	Potential (presence of two or more indicators)	Suspect (one or more indicators with a severity of 3)	Obvious
------------	--	---	---------

Section 7: Data Collection

1. Sample for the lab?	Yes	X No
2. If yes, collected from:	Flow	Pool
3. Interim flow trap set?	X Yes	No If Yes, type: X OBM 3:48 PM Caulk dam

Section 8: Any Non-Ilicit Discharge Concerns (e.g., trash or needed infrastructure repairs)?

Collected: 1/27/2019 1PM
Wet: NEG
Dry: NEG 1/30/2019



MS4 Annual Report Form

This report is being submitted for the reporting period ending March 9, 2019

If submitting this form as part of a joint report on behalf of a coalition leave SPDES ID blank.

Name of MS4/Coalition Village of Ardsley

SPDES ID

N Y R 2 0 A 3 1 6

Subwatershed: Saw Mill River
 Today's date: 2/8/2019
 Investigators: Caceres, Kuhn
 Temperature (°F): 43° Rainfall (in.): Last 24 hours: 0.22" Last 48 hours: 0.62"
 Latitude: 41.00 046 Longitude: 73.21 027 GPS Unit: Garmin eTrex GPS LMK #:
 Camera: Samsung Galaxy
 Land Use in Drainage Area (Check all that apply):
 Industrial Open Space
 Ultra-Urban Residential Institutional
 X Suburban Residential Other: NYS Thruway
 Commercial Known Industries:

Outfall Reconnaissance Sheet

LOCATION MATERIAL SHAPE DIMENSIONS (IN.) SUBMERGED

Closed Pipe X RCP CMP X Circular X Single Diameter: 36" In Water: No
 PVC HDPE Elliptical Double X Partially
 Steel Box Triple Fully
 Other: Other: Other: With Sediment: No
 X Partially Fully

Open drainage Concrete Trapezoid Depth: 15"
 Earthen Parabolic Top Width: 15"
 rip-rap Other: Bottom Width: 15"

In-Stream (applicable when collecting samples)
 Flow Present? Yes No If No, Skip to Section 5
 Flow Description (If present) Trickle Moderate Substantial

Temp 48 °F
 pH 6.7 units
 Ammonia 0 mg/l

PARAMETER	RESULT	UNIT	AVERAGE FLOW RATE (gal/min)	EQUIPMENT
Flow #1	Volume	Liter		Bottle
	Time to fill	Sec		Stop watch
Flow #2	Flow depth	ft, in	47.1 gal/min	Tape measure
	Flow width	ft, in		Tape measure
	Measured length	ft, in		
	Time of travel	Sec		Stop watch

Subwatershed: Saw Mill River
 Today's date: 2/13/2019
 Investigators: Caceres, Kuhn
 Temperature (°F): 51° Rainfall (in.): Last 24 hours: 0" Last 48 hours: 0"
 Latitude: Longitude: GPS Unit: Garmin eTrex GPS LMK #:
 Camera: Samsung Galaxy
 Land Use in Drainage Area (Check all that apply):
 Industrial Open Space
 Ultra-Urban Residential Institutional
 Suburban Residential Other: Known Industries: Laundromat, Coffee Shop, Tire Store, Vet
 X Commercial

Outfall Reconnaissance Sheet

LOCATION MATERIAL SHAPE DIMENSIONS (IN.) SUBMERGED

Closed Pipe X RCP CMP X Circular X Single Diameter: 36" In Water: No
 PVC HDPE Elliptical Double X Partially
 Steel Box Triple Fully
 Other: Other: Other: With Sediment: No
 X Partially Fully

Open drainage Concrete Trapezoid Depth: 15"
 Earthen Parabolic Top Width: 15"
 rip-rap Other: Bottom Width: 15"

In-Stream (applicable when collecting samples)
 Flow Present? Yes No standing water If No, Skip to Section 5
 Flow Description (If present) Trickle Moderate Substantial

Temp 51 °F
 pH 6.5 units
 Ammonia 0 mg/l

PARAMETER	RESULT	UNIT	AVERAGE FLOW RATE (gal/min)	EQUIPMENT
Flow #1	Volume	Liter		Bottle
	Time to fill	Sec		Stop watch
Flow #2	Flow depth	ft, in		Tape measure
	Flow width	ft, in		Tape measure
	Measured length	ft, in		
	Time of travel	Sec		Stop watch

Subwatershed: Saw Mill River
 Today's date: 2/25/2019
 Investigators: Caceres, Kuhn
 Temperature (°F): 39° Rainfall (in.): Last 24 hours: 0" Last 48 hours: 0.56"
 Latitude: Longitude: GPS Unit: Garmin eTrex GPS LMK #:
 Camera: Samsung Galaxy
 Land Use in Drainage Area (Check all that apply):
 Industrial Open Space
 Ultra-Urban Residential Institutional
 Suburban Residential Other: Known Industries: Car Wash, Auto Body, Bakery,
 X Commercial Medical Offices, Restaurant

Outfall Reconnaissance Sheet

LOCATION MATERIAL SHAPE DIMENSIONS (IN.) SUBMERGED

Closed Pipe RCP CMP X Circular X Single Diameter: 15" In Water: No
 PVC HDPE Elliptical Double X Partially
 X Steel Box Triple Fully
 Other: Other: Other: With Sediment: No
 X Partially Fully

Open drainage Concrete Trapezoid Depth: 15"
 Earthen Parabolic Top Width: 15"
 rip-rap Other: Bottom Width: 15"

In-Stream (applicable when collecting samples)
 Flow Present? Yes No standing water If No, Skip to Section 5
 Flow Description (If present) Trickle Moderate Substantial

Temp 49 °F
 pH 7.0 units
 Ammonia 0 mg/l

PARAMETER	RESULT	UNIT	AVERAGE FLOW RATE (gal/min)	EQUIPMENT
Flow #1	Volume	Liter		Bottle
	Time to fill	Sec		Stop watch
Flow #2	Flow depth	ft, in		Tape measure
	Flow width	ft, in		Tape measure
	Measured length	ft, in		
	Time of travel	Sec		Stop watch

OUTFALL RECONNAISSANCE INVENTORY FIELD SHEET

Are Any Physical Indicators Present in the flow? Yes No

INDICATOR	CHECK IF PRESENT	DESCRIPTION	RELATIVE SEVERITY INDEX (1-3)
Odor	No	Sewage Rancid/sour Sulfide Other: Petroleum gas	1 - Faint 2 - Easily detected 3 - Noticeable from a distance
Color	Clear	Clear Brown, Gray Yellow Green Orange Red Other:	1 - Faint colors in sample bottle 2 - Clearly visible in sample bottle 3 - Clearly visible in outfall flow
Turbidity	Clear	See severity	1 - Slight cloudiness 2 - Cloudy 3 - Opaque
Floatables - Does Not Include Trash!	Trace oil sheen	Sewage (Toilet Paper, etc.) Suds X Petroleum (oil sheen) Other:	1 - Few/slight, origin not obvious 2 - Some, indications of origin (e.g., possible mud or oil sheen) 3 - Some, origin clear (e.g., obvious oil slick, or floating sanitary materials)

Physical Indicators for Both Flowing and Non-Flowing Outfalls

Are physical indicators that are not related to flow present? Yes No (If No, Skip to Section 6)

INDICATOR	CHECK IF PRESENT	DESCRIPTION	COMMENTS
Outfall Damage	No	Spalling Cracking or Chipping Peeling Paint Corrosion	
Deposits/Stains	No	Only Flow Line Paint Other: rust	
Abnormal Vegetation	No	Excessive Inhabited	
Poor pool quality	No	Odors Colors Excessive Algae	
Pipe benthic growth	No	Brown Orange Green Other:	

Overall Outfall Characterization

X Unlikely Potential (presence of two or more indicators) Suspect (one or more indicators with a severity of 3) Obvious

Section 7: Data Collection

1. Sample for the lab?	Yes	X No
2. If yes, collected from:	Flow	Pool
3. Intermittent flow trap set?	X Yes	No If Yes, type: X OBM Culk dam 3:42 PM

Section 8: Any Non-Illicit Discharge Concerns (e.g., trash or needed infrastructure repairs)?

Collected: 2/9/2019 4 PM
 Wet: NEG
 Dry: NEG 2/14/2019



OUTFALL RECONNAISSANCE INVENTORY FIELD SHEET

Are Any Physical Indicators Present in the flow? Yes No

INDICATOR	CHECK IF PRESENT	DESCRIPTION	RELATIVE SEVERITY INDEX (1-3)
Odor	No	Sewage Rancid/sour Sulfide Other: Petroleum gas	1 - Faint 2 - Easily detected 3 - Noticeable from a distance
Color	Light brown	Clear X Brown, Gray Yellow Green Orange Red Other:	1 - Faint colors in sample bottle 2 - Clearly visible in sample bottle 3 - Clearly visible in outfall flow
Turbidity	cloudy	See severity	X 2 - Cloudy 3 - Opaque
Floatables - Does Not Include Trash!	Slight oil sheen	Sewage (Toilet Paper, etc.) Suds X Petroleum (oil sheen) Other:	1 - Few/slight, origin not obvious 2 - Some, indications of origin (e.g., possible mud or oil sheen) 3 - Some, origin clear (e.g., obvious oil slick, or floating sanitary materials)

Physical Indicators for Both Flowing and Non-Flowing Outfalls

Are physical indicators that are not related to flow present? Yes No (If No, Skip to Section 6)

INDICATOR	CHECK IF PRESENT	DESCRIPTION	COMMENTS
Outfall Damage	No	Spalling Cracking or Chipping Peeling Paint Corrosion	
Deposits/Stains	yes	Only X Flow Line Paint Other: rust	
Abnormal Vegetation	No	Excessive Inhabited	
Poor pool quality	No	Odors Colors Excessive Algae	
Pipe benthic growth	No	Brown Orange Green Other:	

Overall Outfall Characterization

X Unlikely Potential (presence of two or more indicators) Suspect (one or more indicators with a severity of 3) Obvious

Section 7: Data Collection

1. Sample for the lab?	Yes	X No
2. If yes, collected from:	Flow	Pool
3. Intermittent flow trap set?	X Yes	No If Yes, type: X OBM Culk dam 3:40 PM

Section 8: Any Non-Illicit Discharge Concerns (e.g., trash or needed infrastructure repairs)?

Collected: 2/18/2019 3 PM
 Wet: NEG
 Dry: NEG 2/24/2019



OUTFALL RECONNAISSANCE INVENTORY FIELD SHEET

Are Any Physical Indicators Present in the flow? Yes No

INDICATOR	CHECK IF PRESENT	DESCRIPTION	RELATIVE SEVERITY INDEX (1-3)
Odor	No	Sewage Rancid/sour Sulfide Other: Petroleum gas	1 - Faint 2 - Easily detected 3 - Noticeable from a distance
Color	Clear	Clear Brown, Gray Yellow Green Orange Red Other:	1 - Faint colors in sample bottle 2 - Clearly visible in sample bottle 3 - Clearly visible in outfall flow
Turbidity	Clear	See severity	1 - Slight cloudiness 2 - Cloudy 3 - Opaque
Floatables - Does Not Include Trash!	Trace oil sheen, trash	Sewage (Toilet Paper, etc.) Suds X Petroleum (oil sheen) Other:	1 - Few/slight, origin not obvious 2 - Some, indications of origin (e.g., possible mud or oil sheen) 3 - Some, origin clear (e.g., obvious oil slick, or floating sanitary materials)

Physical Indicators for Both Flowing and Non-Flowing Outfalls

Are physical indicators that are not related to flow present? Yes No (If No, Skip to Section 6)

INDICATOR	CHECK IF PRESENT	DESCRIPTION	COMMENTS
Outfall Damage	Pipe obscured by rock	Spalling Cracking or Chipping Peeling Paint Corrosion	
Deposits/Stains	Flow line	Only Flow Line Paint Other:	
Abnormal Vegetation	slight	Excessive Inhabited	invasive vines
Poor pool quality	No	Odors Colors Excessive Algae	
Pipe benthic growth	No	Brown Orange Green Other:	

Overall Outfall Characterization

X Unlikely Potential (presence of two or more indicators) Suspect (one or more indicators with a severity of 3) Obvious

Section 7: Data Collection

1. Sample for the lab?	Yes	X No
2. If yes, collected from:	Flow	Pool
3. Intermittent flow trap set?	X Yes	No If Yes, type: X OBM Culk dam 3:15 PM

Section 8: Any Non-Illicit Discharge Concerns (e.g., trash or needed infrastructure repairs)?

Collected: 2/26/2019 5PM
 Wet: NEG
 Dry: NEG 3/11/2019



MS4 Annual Report Form

This report is being submitted for the reporting period ending March 9,

2	0	1	9
---	---	---	---

If submitting this form as part of a joint report on behalf of a coalition leave SPDES ID blank.

Name of MS4/Coalition

Village of Ardsley

SPDES ID

N	Y	R	2	0	A	3	1	6
---	---	---	---	---	---	---	---	---

<u>Catch Basin Head Cleaning</u>		<u>Bulk Roadside Cleaning</u>	<u>Bulk Leaf Clean-up</u>	
Routes: A = Ashford Ave H = Heatherdell Rd EV = Entire Village		Route: Entire Village (litter and small brush)		
ROUTES	DATE		ROUTE	DATE
EV	3/29/18	3/29/18	A	3/30/18
A	4/17/18	4/9/18	H	4/2/18
H	4/18/18	4/23/18	A	4/22/18
EV	4/25/18	5/2/18	H	4/23/18
LIBRARY	5/10/18	8/6/18	EV	5/2/18
EV	5/17/18	10/8/18	A	5/28/18
EV	5/18/18	10/15/18	H	5/3/18
A	4/2/18	10/29/18	A	9/12/18
H	4/3/18	11/6/18	H	9/13/18
H	4/6/18	11/12/18	EV	9/19/18
A	4/9/18	11/20/18	EV	9/24/18
EV	4/10/18	12/10/18	A	10/23/18
EV	4/12/18	2/25/19	H	10/26/18
EV	4/13/18		EV	11/13/18
A	4/16/18		EV	11/26/18
H	4/17/18		EV	12/18/18
EV	4/19/18		A	2/20/19
A	4/23/18		H	2/23/19
H	4/24/18		EV	3/1/19
EV	4/26/18			
EV	4/27/18			
A	6/13/18			
H	6/14/18			
EV	7/26/18			
EV	8/20/18			
EV	9/27/18			
A	10/25/18			
H	10/26/18			
EV	10/29/18			
EV	11/5/18			
A	12/3/18			
H	12/4/18			
EV	1/16/19			
EV	2/26/19			
EV	3/1/19			

MS4 Annual Report Form

This report is being submitted for the reporting period ending March 9,

2	0	1	9
---	---	---	---

If submitting this form as part of a joint report on behalf of a coalition leave SPDES ID blank.

Name of MS4/Coalition

Village of Ardsley

SPDES ID

N	Y	R	2	0	A	3	1	6
---	---	---	---	---	---	---	---	---

Catch Basin Internal Clean-out

LOCATION	# of BASINS	DATE
ALMENA AVE	5	4/19/18
RIDGE RD	3	4/19/18
BRAMBLEBROOK	6	4/19/18
JUDSON	2	4/19/18
LINCOLN AVE	5	4/19/18
LINCOLN AVE	3	4/20/18
PROSPECT AVE	5	4/20/18
TAFT LANE	1	4/20/18
MCKILEY PLACE	3	4/20/18
ASHFORD AVE	6	4/20/18
MCCORMICK DRIVE	7	4/23/18
ASHFORD AVE	2	4/23/18
ASHFORD AVE.	5	4/24/18
HEATHERDELL RD.	8	4/25/18
CONCORD RD.	3	4/25/18
VICTORIA RD.	2	4/25/18
REVOLUTIONARY RD.	2	4/25/18
FARM RD.	3	4/25/18
AGNES CIRCLE	3	4/26/18
BEACON HILL RD.	2	4/26/18
REVERE RD.	2	4/26/18
HILLTOP RD.	2	4/26/18

MS4 Annual Report Form

This report is being submitted for the reporting period ending March 9,

2	0	1	9
---	---	---	---

If submitting this form as part of a joint report on behalf of a coalition leave SPDES ID blank.

Name of MS4/Coalition

Village of Ardsley

SPDES ID

N	Y	R	2	0	A	3	1	6
---	---	---	---	---	---	---	---	---

Location (st/cross st)	Description (water main, sewage)	Date incident	Repair (DPW or other)	Date repaired
7 MCKINLEY	SEWER	4/1/18	GREENBURGH	SAME
9A & CENTER	SEWER	7/9/18	GREENBURGH	SAME
4 WESTERN	SEWER	7/10/18	DPW-FLUSH	SAME
4 WESTERN	SEWER	8/15/18	DPW-FLUSH	SAME
9A & RVOLUTIONARY	SEWER	8/28/18	GREENBURGH	SAME
4 WESTERN	SEWER	9/13/18	DPW-FLUSH	SAME
4 WESTERN	SEWER	10/16/18	DPW-FLUSH	SAME
694 SMRR	SEWER	11/4/18	GREENBURGH	SAME
4 WESTERN	SEWER	11/20/18	DPW-FLUSH	SAME
ADDYMAN SQUARE	SEWER	11/29/18	GREENBURGH	SAME
CROSS RD	WATER	11/30/18	SUEZ	12/6/18
CONCORD RD	WATER	11/30/18	HOMEOWNER	12/5/18
EXETER	DRAINAGE	12/6/18	DPW	12/9/18
PASCONC WAY	SEWER	12/29/18	DPW	SAME
BICENTENIAL PARK	SEWER	1/9/19	GREENBURGH	SAME
ABBINGTON AVE	WATER	1/12/19	SUEZ	1/16/19
VICTORIA	WATER	1/15/19	SUEZ	2/1/19
HILLTOP	WATER	1/25/19	SUEZ	2/1/19
BONAVENTURE AVE	WATER	1/27/19	SUEZ	2/7/19
KENSINGTON	WATER	1/30/19	SUEZ	2/14/19

MS4 Annual Report Form

This report is being submitted for the reporting period ending March 9,

2	0	1	9
---	---	---	---

If submitting this form as part of a joint report on behalf of a coalition leave SPDES ID blank.

Name of MS4/Coalition

Village of Ardsley

SPDES ID

N	Y	R	2	0	A	3	1	6
---	---	---	---	---	---	---	---	---

Location (st/cross st)	Material	Amount (tons)	Date of use
ASHFORD/TAFT	7F	1	3/28/18
OVERLOOK,HUNTLEY,RIDGE,BB	CURB MIX	5	4/2/18
VILLAGE WIDE	CURB MIX	6	4/5/18
VILLAGE WIDE	CURB MIX	4	4/9/18
VILLAGE WIDE	CURB MIX	4	4/12/18
VILLAGE WIDE	CURB MIX	4	4/17/18
VILLAGE WIDE	7F	6	4/20/18

MS4 Annual Report Form

This report is being submitted for the reporting period ending March 9, 2019

If submitting this form as part of a joint report on behalf of a coalition leave SPDES ID blank.

Name of MS4/Coalition

Village of Ardsley

SPDES ID

N Y R 2 0 A 3 1 6

Road Salt Application

Village (total) or Neighborhood (name)	Amount (tons)	Condition	Date applied
VILLAGE	18	SNOW	3/2/18
VILLAGE	4	ICE	3/3/18
VILLAGE	15	SNOW	3/7/18
VILLAGE	5	SNOW MOP UP	3/8/18
VARIOUS	3	ICE	3/11/18
VILLAGE	8	SNOW	3/12/18
VILLAGE	4	SNOW MOP UP	3/13/18
VARIOUS	3	RUNOFF	3/16/18
VILLAGE	12	SNOW	3/21/18
VARIOUS	4	SNOW MOP UP	3/22/18
VILLAGE	6	SNOW	2/2/18
VILLAGE	16	SNOW-ICE	11/15/18
VARIOUS	10	SNOW MOP UP	11/16/18
VARIOUS	8	ICE RUNOFF	11/22/18
VARIOUS	6	ICE-RUNOFF	11/23/18
VILLAGE	18	SNOW	11/23/18
VILLAGE	18	SNOW	1/7/19
VICTORIA	4	WATER MAIN BREAK	1/15/19
VICTORIA	2	WATER MAIN BREAK	1/16/19
VILLAGE	18	SNOW	1/17/19
VILLAGE	20	SNOW	1/19/19
VARIOUS	4	SNOW MOP UP	1/20/19
ABBINGTON	2	WATER MAIN BREAK	1/25/19
ABBINGTON	3	WATER MAIN BREAK	1/26/19
ABBINGTON	3	WATER MAIN BREAK	1/27/19
ABBINGTON & VARIOUS	4	WATER MAIN & ICE	1/28/19
VILLAGE	7	SNOW & ICE	1/29/19
VILLAGE	20	SNOW, ICE, WATER MAIN	1/30/19
VILLAGE	8	SNOW MOP UP	1/31/19
VILLAGE	20	SNOW	2/12/19

MS4 Annual Report Form

This report is being submitted for the reporting period ending March 9,

2	0	1	9
---	---	---	---

If submitting this form as part of a joint report on behalf of a coalition leave SPDES ID blank.

Name of MS4/Coalition

Village of Ardsley

SPDES ID

N	Y	R	2	0	A	3	1	6
---	---	---	---	---	---	---	---	---

Road Salt Application

Village (total) or Neighborhood (name)	Amount	Condition	Date applied
VILLAGE	8	SNOW MOP UP	2/13/19
VILLAGE	10	ICE	2/18/19
VILLAGE	15	SNOW	2/20/19
VILLAGE	10	SNOW MOP UP	2/21/19
VILLAGE	12	SNOW	2/27/19
VILLAGE	12	SNOW	2/28/19
VILLAGE	12	SNOW	3/1/19
ENTIRE VILLAGE	18	5" SNOW	3/1/19
ENTIRE VILLAGE	21	6" SNOW	3/2/19
ENTIRE VILLAGE	6	MOP UP	3/4/19
VARIOUS	3	ICE&REFREEZE	3/5/19

MS4 Annual Report Form

This report is being submitted for the reporting period ending March 9, 2019

If submitting this form as part of a joint report on behalf of a coalition leave SPDES ID blank.

Name of MS4/Coalition

Village of Ardsley

SPDES ID

N Y R 2 0 A 3 1 6

Street Sweeping

Routes: HN = North of Heatherdell Rd

HS = South of Heatherdell Rd

AN = North of Ashford Ave

AS = South of Ashford Ave

BD = Business District, Route 9A/Center St

DATE	ROUTES
3/12/18	AN
3/13/18	AS-BD
3/14/18	HN
3/15/18	HS-BD
3/16/18	PARKING LOTS
3/26/18	AN-AS
3/27/18	HN-HS
3/28/18	BD-LOTS
4/16/18	AN-AS
4/17/18	HN-HS
3/18/18	BD-LOTS-ELM ST.
5/14/18	AN-AS
5/15/18	HN-HS
5/16/18	BD-LOTS
6/18/18	HN-HS
6/19/18	AS-AN
6/20/18	BD-LOTS
7/23/18	HN-HS
7/24/18	AS-AN-BD
8/13/18	BD-LOTS
8/14/18	HN-HS
8/15/18	AN-AS
9/24/18	BD-LOTS
9/25/18	HN-HS
9/26/18	AN-AS-ELM ST.
10/15/18	HN-HS

MS4 Annual Report Form

This report is being submitted for the reporting period ending March 9,

2	0	1	9
---	---	---	---

If submitting this form as part of a joint report on behalf of a coalition leave SPDES ID blank.

Name of MS4/Coalition

Village of Ardsley

SPDES ID

N	Y	R	2	0	A	3	1	6
---	---	---	---	---	---	---	---	---

Vehicle Maintenance

Vehicle type	#	Wash or Maintenance (brief description)	Date serviced
POLICE	99	ROUTINE MAINTENANCE	3/1/18
SWEEPER	SS	LUBRICATE ALL POINTS	3/1/18
PICKUP	6	HYDRAULIC LEAK	3/10/18
PICKUP	7	ROUTINE MAINTENANCE	3/12/18
PICKUP	10	WASH-SALT	3/13/18
PICKUP	9	WASH-SALT	3/13/18
PICKUP	7	WASH-SALT	3/13/18
PICKUP	6	WASH-SALT	3/13/18
PICKUP	4	WASH-SALT	3/13/18
DUMP	1	WASH-SALT	3/13/18
DUMP	3	WASH-SALT	3/13/18
DUMP	5	WASH-SALT	3/13/18
DUMP	11	WASH-SALT	3/13/18
PAYLOADER	PL	WASH-SALT	3/13/18
JD #1	TRACTOR	WASH-SALT	3/13/18
JD#2	TRACTOR	WASH-SALT	3/13/18
POLICE	94	ROUTINE MAINTENANCE	3/14/18
PICKUP	2	HYDRAULIC LEAK	3/14/18
POLICE	93	REPLACE RADIATOR	3/16/18
PICKUP	10	WASH-SALT	3/22/18
PICKUP	9	WASH-SALT	3/22/18
PICKUP	7	WASH-SALT	3/22/18
PICKUP	6	WASH-SALT	3/22/18
PICKUP	4	WASH-SALT	3/22/18
DUMP	1	WASH-SALT	3/22/18
DUMP	3	WASH-SALT	3/22/18
DUMP	5	WASH-SALT	3/22/18
DUMP	11	WASH-SALT	3/22/18
PAYLOADER	PL	WASH-SALT	3/22/18
JD #1	TRACTOR	WASH-SALT	3/22/18
JD#2	TRACTOR	WASH-SALT	3/22/18
PACKER	14	ROUTINE MAINTENANCE	3/26/18
POLICE	97	OIL CHANGE	3/28/18

MS4 Annual Report Form

This report is being submitted for the reporting period ending March 9,

2	0	1	9
---	---	---	---

If submitting this form as part of a joint report on behalf of a coalition leave SPDES ID blank.

Name of MS4/Coalition

Village of Ardsley

SPDES ID

N	Y	R	2	0	A	3	1	6
---	---	---	---	---	---	---	---	---

Vehicle Maintenance

Vehicle type	#	Wash or Maintenance (brief description)	Date serviced
POLICE	92	REPLACE 2 TIRES	4/2/18
SWEEPER	SS	REPLACE CENTER BROOM	4/6/18
PACKER	14	REPLACE HOSE AND EXPANSION JOINT	4/11/18
SUBURBAN	2013	REPLACE 2 BATTERIES	4/12/18
PACKER	16	REPLACE 8 TIRES	4/19/18
PACKER	16	REPLACE BANJO	4/20/18
PACKER	15	REPLACE COOLANT HOSE	4/20/18
SUBURBAN	HW 1	OIL CHANGE & LUBE	4/20/18
LAWN DECKS	LD	SEASONAL TUNE UP	4/23/18
POLICE	93	REPLACE 1 TIRE	4/23/18
PICKUP	10	REPAIR LIFT LEAK	4/25/18
BUCKET	AL	LUBE ALL POINTS. GREASE	4/26/18
PACKER	15	REPLACE 2 F. TIRES	4/27/15
POLICE	92	ROUTINE MAINTENANCE	5/1/18
PAYLOADER	PL	REPLACE TIRE	5/2/18
PACKER	14	REPLACE HD HOSE	5/9/18
PACKER	12	ROUTINE MAINTENANCE	5/14/18
POLICE	CHIEF	ROUTINE MAINTENANCE	2/14/18
PACKER	16	DIAGNOSTICS	5/16/18
SUBURBAN	2012	DIAGNOSTICS	5/17/18
PACKER	15	REPLACE 6 TIRES	5/18/18
POLICE	97	ROUTINE MAINTENANCE	5/21/18
POLICE	94	REPLACE 2 TIRES	5/22/18
DUMP	3	ROUTINE MAINTENANCE	5/24/18
PACKER	14	REPAIR LEAK	5/25/18
PAKER	15	REPLACE BRAKES	5/29/18
PACKER	16	REPLACE HD HOSE	5/29/18
PICKUP	4	REPAIR HD LEAK	6/4/18
PAYLOADER	PL	REPAIR PISTON LEAK	5/5/18
PACKER	14	REPLACE BRAKE DRUMS	6/6/18
SWEEPER	SS	REPLACE SIDE BROOMS	6/12/18
SUBURBAN	HW 1	REPLACE RADIATOR HOSE	6/13/18

MS4 Annual Report Form

This report is being submitted for the reporting period ending March 9,

2	0	1	9
---	---	---	---

If submitting this form as part of a joint report on behalf of a coalition leave SPDES ID blank.

Name of MS4/Coalition

Village of Ardsley

SPDES ID

N	Y	R	2	0	A	3	1	6
---	---	---	---	---	---	---	---	---

Vehicle Maintenance

Vehicle type	#	Wash or Maintenance (brief description)	Date serviced
PICKUP	2	REPLACE HD HOSE	6/15/18
POLICE	99	ROUTINE MAINT.	6/19/18
PACKER	8	NEW PREP	6/21/18
PICKUP	6	REPLACE 1 TIRE	6/21/18
POLICE	96	RUN DIAGNOSTICS	6/21/18
SUBURBAN	2013	ROUTINE MAINT.	6/22/18
SUBURBAN	2013	REPLACE 2 BATTERIES	6/22/18
PACK BLOWER	(6)	TUNE UP	6/27/18
WEED WHAC	(5)	TUNE UP	6/27/18
SUBURBAN	HW 1	REPAIR AC SYSTEM	6/29/18
PACKER	12	POWER WASH	7/3/18
PACKER	14	POWER WASH	7/3/18
PACKER	15	POWER WASH	7/3/18
PACKER	16	POWER WASH	7/5/18
DUMP	3	POWER WASH	7/5/18
DUMP	1	POWER WASH	7/5/18
DUMP	5	POWER WASH	7/5/18
PACKER	8	UNDERCOATED	7/9/18
PICKUP	10	RUN DIAGNOSTICS	7/11/18
TRACTOR	JD 3	OIL CHANGE & LUBE	7/12/18
SUBURBAN	2013	REPLACE REAR END OIL	7/13/18
SUBURBAN	2013	REPLACE BEARINGS	7/18/18
POLICE	98	ROUTINE MAINT.	7/20/18
TRACTOR	JD 1	REPLACE FRONT END	7/23/18
PACKER	12	REPLACE FUEL TANK	7/24/18
PACKER	15	REPLACE RADIATOR HOSE	7/25/18
POLICE	96	ROUTINE MAINT,	7/26/18
DECK MOWER	HUSQ.	ROUTINE TUNE UP	7/27/18
POLICE	98	REPLACE 2 TIRES	8/2/18
PICKUP	7	WASH	8/3/18
PICKUP	6	WASH	8/3/18
PICKUP	9	WASH	8/3/18

MS4 Annual Report Form

This report is being submitted for the reporting period ending March 9,

2	0	1	9
---	---	---	---

If submitting this form as part of a joint report on behalf of a coalition leave SPDES ID blank.

Name of MS4/Coalition

Village of Ardsley

SPDES ID

N	Y	R	2	0	A	3	1	6
---	---	---	---	---	---	---	---	---

Vehicle Maintenance

Vehicle type	#	Wash or Maintenance (brief description)	Date serviced
PICKUP	4	WASH	8/3/18
PICKUP	10	WASH	8/3/18
SWEeper	SS	WASH	8/4/18
SUBURBAN	HW 1	WASH	8/4/18
POLICE	98	REPLACE HOSE & BEARINGS	8/4/18
POLICE	96	REPLACE BRAKES	8/6/18
BUCKET	BT	OIL CHANGE & LUBE	8/6/18
PACKER	12	ROUTINE MAINT.	8/7/18
PACKER	15	REPLACE REAR SPRINGS	8/8/18
PICKUP	6	REPLACE BRAKES	8/9/18
BUCKET	BT	REPLACE HD HOSE	8/10/18
PICKUP	9	REPAIR HD LEAK	8/13/18
PICKUP	9	OIL CHANGE,LEAK IN EHAUST	8/13/18
PICKUP	9	REPLACE KING PIN	8/14/18
PICKUP	9	REPLACE MUFFLER	8/15/18
MOWER DECK	MD	REPLACE BELT	8/16/18
PACKER	15	REPAIR FRONT END LEAK	8/20/18
SWEeper	SS	REPLACED 4 FILTERS	8/27/18
PACKER	16	ROUTINE MAINT.	8/29/18
PACKER	14	REPLACE 2 TIRES	9/10/18
PACKER	12	WELD HOLE IN BODY	9/14/18
PICKUP	9	WASH	9/17/18
PICKUP	6	WASH	9/17/18
PICKUP	10	PICKUP	9/17/18
PICKUP	4	WASH	9/17/18
PACKER	12	WASH	9/17/18
PACKER	15	WASH	9/17/18
PACKER	14	WASH	9/17/18
PACKER	16	WASH	9/17/18
PACKER	8	WASH	9/18/18
PACKER	15	REPLACE EXHAUST SYSTEM	9/18/18
POLICE	CHIEF	ROUTINE MAINT.	9/25/18

MS4 Annual Report Form

This report is being submitted for the reporting period ending March 9,

2	0	1	9
---	---	---	---

If submitting this form as part of a joint report on behalf of a coalition leave SPDES ID blank.

Name of MS4/Coalition

Village of Ardsley

SPDES ID

N	Y	R	2	0	A	3	1	6
---	---	---	---	---	---	---	---	---

Vehicle Maintenance

Vehicle type	#	Wash or Maintenance (brief description)	Date serviced
POLICE	CHIEF	REPLACE 4 TIRES	9/26/18
POLICE	98	ROUTINE MAINT.	9/27/18
DUMP	11	WELD TAILGATE	10/2/18
DUMP	11	REPLACE EXHAUST PIPE	10/4/18
PICKUP	10	ROUTINE MAINT.	10/10/18
DUMP	3	ROUTINE MAINT.	10/16/18
DUMP	3	WINTERIZE FOR SNOW	10/16/18
PICKUP	10	REPLACE HD HOSE	10/18/18
MERCURY	BI	ROUTINE MAINT.	10/19/18
POLICE	95	REPLACE STEERING PUMP AND HD LINES	10/23/18
PACKER	8	REPLACE HD HOSE	10/25/18
PICKUP	6	INSTALL SPREADER	10/29/18
PICKUP	10	INSTALL SPREADER	10/29/18
BUCKET	BT	GREASE AND LUBE ALL FITTINGS	10/29/18
POLICE	96	REPLACE BATTERY	10/30/18
SWEEPER	SS	REPLACE WATER LINE	10/31/18
SWEEPER	SS	REPAIR VACCUUM	11/1/18
SWEEPER	SS	GREASE ALL FITTINGS	11/1/18
POLICE	95	ROUTINE MAINT.	11/2/18
PAYLOADER	PL	ROUTINE LUBE & MAINT.	11/2/18
PAYLOADER	PL	REPLACE 3 BATTERIES	11/5/18
POLICE	94	ROUTINE MAINT.	11/6/18
SUBURBAN	2011	ROUTINE MAINT.	11/6/18
SUBURBAN	2012	ROUTINE MAINT.	11/7/18
PICKUP	10	REPLACE DRIVE BELT	11/7/18
SUBURBAN	HW 1	RUN DIAGNOSTICS	11/8/18
PICKUP	10	REPLACE HD HOSES	11/13/18
PACKER	15	REPAIR LEAKING PISTON	11/14/18
DUMP	1	ROUTINE MAINT	11/15/18
DUMP	5	ROUTINE MAINT.	11/15/18
DUMP	3	ROUTINE MAINT.	11/16/18

MS4 Annual Report Form

This report is being submitted for the reporting period ending March 9,

2	0	1	9
---	---	---	---

If submitting this form as part of a joint report on behalf of a coalition leave SPDES ID blank.

Name of MS4/Coalition

Village of Ardsley

SPDES ID

N	Y	R	2	0	A	3	1	6
---	---	---	---	---	---	---	---	---

Vehicle Maintenance

Vehicle type	#	Wash or Maintenance (brief description)	Date serviced
DUMP	11	ROUTINE MAINT.	11/16/18
BACKHOE	JD3	REPLACE HD HOSE	11/19/18
DUMP	11	REPLACE BRAKES	11/20/18
SWEEPER	SS	REPLACE ROLLERS	11/21/18
PICKUP	6	WASH-SALT	11/26/18
PICKUP	7	WASH-SALT	11/26/18
PICKUP	9	WASH-SALT	11/26/18
PICKUP	4	WASH-SALT	11/26/18
PICKUP	10	WASH-SALT	11/26/18
PICKUP	O-7	WASH-SALT	11/26/18
PICKUP	11	WASH-SALT	11/26/18
DUMP	3	WASH-SALT	11/26/18
DUMP	5	WASH-SALT	11/26/18
DUMP	1	WASH-SALT	11/26/18
PAYLOADER	PL	WASH-SALT	11/28/18
SWEEPER	SS	CLEAR ALL INTERIOR GRATES	11/28/18
Police	97	REPLACE TIRE	11/29/18
Packer	15	REPAIR HEATING/COOLING	11/30/18
Backhoe	Jd 3	REPAIR ARTICULATING ARM	12/3/18
Suburban	2013	REPLACE STARTER COOLANT LINE	12/4/18
Payloader	Pl	REPAIR FRONT TIRE	12/5/18
SUBURBAN	2013	OIL CHANGE	12/10/18
POLICE	97	HEATING SYSTEM	12/10/18
POLICE	98	REPLACE BATTERY	12/10/18
PACKER	16	AIR BRAKE REPAIR	12/11/18
BUCKET	BT	REPLACE INVERTER	12/11/18
SUBURBAN	2013	FRONT END & SPRINGS	12/13/18
PICKUP	9	ROUTINE MAINT.	12/18/18
SWEEPER	SS	REPLACE VAC HOSE	12/18/18
POLICE	95	ROUTINE MAINT.	12/19/18
POLICE	99	REPAIR ANTIFREEZE LEAK	12/26/18
POLICE	96	REPLACE FRONT TIRE	12/28/18

MS4 Annual Report Form

This report is being submitted for the reporting period ending March 9,

2	0	1	9
---	---	---	---

If submitting this form as part of a joint report on behalf of a coalition leave SPDES ID blank.

Name of MS4/Coalition

Village of Ardsley

SPDES ID

N	Y	R	2	0	A	3	1	6
---	---	---	---	---	---	---	---	---

Vehicle Maintenance

Vehicle type	#	Wash or Maintenance (brief description)	Date serviced
PICKUP	10	RUN DIAGNOSTICS	1/3/19
TRACTOR	JD 1	REPAIR SNOW BLOWER	1/4/19
POLICE	97	ROUTINE MAINT.	1/4/19
AMBULANCE	60B1	REPLACE 2 TIRES	1/7/19
MERCURY	BI	REPLACE 2 TIRES	1/8/19
PICKUP	4	WASH-SALT	1/8/19
PICKUP	6	WASH-SALT	1/8/19
PICKUP	10	WASH-SALT	1/8/19
PICKUP	9	WASH-SALT	1/8/19
PICKUP	7	WASH-SALT	1/8/19
DUMP	5	WASH-SALT	1/9/19
DUMP	1	WASH-SALT	1/9/19
DUMP	3	WASH-SALT	1/9/19
DUMP	11	WASH-SALT	1/9/19
PAYLOADER	PL	WASH-SALT	1/9/19
PICKUP	10	REPLACE PLOW PUMP	1/10/19
POLICE	97	REPLACE TIRE	1/10/19
PICKUP	6	REPLACE HD HOSE-SPREADER	1/10/19
PPOLICE	98	REPLACE TIRE	1/11/19
DUMP	5	REPLACE PLOW BLADE	1/12/19
PICKUP	7	RESEAL PLOW PUMP	1/12/19
TRACTOR	JD 2	REPAIR SNOW BLOWER	1/15/19
TRACTOR	JD 1	REPLACE ALL HD HOSES	1/15/19
DUMP	3	REPLACE PLOW BLADE	1/16/19
POLICE	94	REPLACE 4 TIRES	1/17/19
PICKUP	4	ROUTINE MAINT.	1/18/19
PICKUP	4	REPLACE PLOW PUMP	1/19/19
PICKUP	4	WASH-SALT	1/22/19
PICKUP	6	WASH-SALT	1/22/19
PICKUP	10	WASH-SALT	1/22/19
PICKUP	9	WASH-SALT	1/22/19
PICKUP	7	WASH-SALT	1/22/19

MS4 Annual Report Form

This report is being submitted for the reporting period ending March 9,

2	0	1	9
---	---	---	---

If submitting this form as part of a joint report on behalf of a coalition leave SPDES ID blank.

Name of MS4/Coalition

Village of Ardsley

SPDES ID

N	Y	R	2	0	A	3	1	6
---	---	---	---	---	---	---	---	---

Vehicle Maintenance

Vehicle type	#	Wash or Maintenance (brief description)	Date serviced
DUMP	5	WASH-SALT	1/22/19
DUMP	1	WASH-SALT	1/22/19
DUMP	3	WASH-SALT	1/22/19
DUMP	11	WASH-SALT	1/22/19
PAYLOADER	PL	WASH-SALT	1/22/19
PICKUP	2	ROUTINE MAINT.	1/23/19
SUBURBAN	2013	REPLACE 2 TIRES	1/23/19
PICKUP	2	REPAIR HD HOSE	1/23/19
TRACTOR	JD 3	REPLACE BATTERY	1/25/19
PACKER	16	REPLACE 2 TIRES	1/26/19
PICKUP	4	REPAIR HD HOSE	1/25/19
PICKUP	4	WASH-SALT	1/31/19
PICKUP	6	WASH-SALT	1/31/19
PICKUP	10	WASH-SALT	1/31/19
PICKUP	9	WASH-SALT	1/31/19
PICKUP	7	WASH-SALT	1/31/19
DUMP	5	WASH-SALT	1/31/19
DUMP	1	WASH-SALT	1/31/19
DUMP	3	WASH-SALT	1/31/19
DUMP	11	WASH-SALT	1/31/19
PAYLOADER	PL	WASH-SALT	1/31/19
DUMP	11	REPAIR OIL LEAK	2/1/19
PICKUP	10	REPLACE DEFROSTER	2/2/19
POLICE	98	REPLACE BATTERY & BRAKES	2/8/19
SUBURBAN	HW 1	REPLACE FRONT TIRE	2/8/19
PICKUP	4	WASH-SALT	2/13/19
PICKUP	6	WASH-SALT	2/13/19
PICKUP	10	WASH-SALT	2/13/19
PICKUP	9	WASH-SALT	2/13/19
PICKUP	7	WASH-SALT	2/13/19
DUMP	5	WASH-SALT	2/13/19
DUMP	1	WASH-SALT	2/13/19

MS4 Annual Report Form

This report is being submitted for the reporting period ending March 9,

2	0	1	9
---	---	---	---

If submitting this form as part of a joint report on behalf of a coalition leave SPDES ID blank.

Name of MS4/Coalition

Village of Ardsley

SPDES ID

N	Y	R	2	0	A	3	1	6
---	---	---	---	---	---	---	---	---

Vehicle Maintenance

Vehicle type	#	Wash or Maintenance (brief description)	Date serviced
DUMP	3	WASH-SALT	2/13/19
DUMP	11	WASH-SALT	2/13/19
PAYLOADER	PL	WASH-SALT	2/13/19
PICKUP	6	REPLACE HD HOSE	2/13/19
TRACTOR	JD 1	REPLACE SNOWBLOWER	2/14/19
DUMP	11	REPAIR PLOW PUMP	2/15/19
DUMP	1	OIL CHANGE	2/20/19
DUMP	5	REPLACE HD HOSES	2/20/19
DUMP	11	REPLACE 2 TIRES	2/20/19
PICKUP	4	WASH-SALT	2/21/19
PICKUP	6	WASH-SALT	2/21/19
PICKUP	10	WASH-SALT	2/21/19
PICKUP	9	WASH-SALT	2/21/19
PICKUP	7	WASH-SALT	2/21/19
DUMP	5	WASH-SALT	2/21/19
DUMP	1	WASH-SALT	2/21/19
DUMP	3	WASH-SALT	2/21/19
DUMP	11	WASH-SALT	2/21/19
PAYLOADER	PL	WASH-SALT	2/21/19
PICKUP	2	WASH-SALT	2/21/19
PACKER	15	RUN DIAGNOSTICS-BRAKES	2/25/19
PACKER	16	REPAIR HD LEAK	2/26/19
PACKER	16	REPLACE CAMERA	2/27/19
DUMP	11	REPAIR COOLANT LEAK	3/1/19
PICKUP	4	WASH-SALT	3/1/19
PICKUP	6	WASH-SALT	3/1/19
PICKUP	10	WASH-SALT	3/1/19
PICKUP	9	WASH-SALT	3/1/19
PICKUP	7	WASH-SALT	3/1/19
DUMP	5	WASH-SALT	3/1/19
DUMP	1	WASH-SALT	3/1/19
DUMP	3	WASH-SALT	3/1/19

MS4 Annual Report Form

This report is being submitted for the reporting period ending March 9, 2019

If submitting this form as part of a joint report on behalf of a coalition leave SPDES ID blank.

Name of MS4/Coalition

Village of Ardsley

SPDES ID

N	Y	R	2	0	A	3	1	6
---	---	---	---	---	---	---	---	---

Vehicle Maintenance

[illegible]

MS4 Annual Report Form

This report is being submitted for the reporting period ending March 9,

2	0	1	9
---	---	---	---

If submitting this form as part of a joint report on behalf of a coalition leave SPDES ID blank.

Name of MS4/Coalition

Village of Ardsley

SPDES ID

N	Y	R	2	0	A	3	1	6
---	---	---	---	---	---	---	---	---

Used Oil Storage Tank:		(used oil pick up is documented in separate Highway Foreman file)						
	Date:	4/18/2018						
	Volume (gallons):	50 gal						
	Condition:	good						
Motor Fluids:								
	Date:	4/18/2018						
	Volume (gallons):	1 X 50 gal	1 X 50 gal	1 X 50 gal	2 X 50 gal	1 X 50 gal	1 X 50 gal	1 X 50 gal
	Type:	Diesel	AW32	5W20 syn	anti	10W30	0W20	Diesel
(antifreeze, transmission, etc.)		Exhaust			freeze			oil
	Condition:	good	good	good	good	good	good	good
Solvents:								
	Date:	4/18/2018						
	Volume (gallons):	3 X 5 gal	1 X 50 gal					
	Type:	Salt	truck					
(alcohol, acetone, etc.)		wash	wash					
	Condition:	good	good					
Paint:								
	Date:	4/18/2018						
	Volume (gallons):	8 X 5 gal	5 X 1 gal	3 X 1 pt				
	Type:	traffic	latex	enamel				
(oil, latex, enamel, etc.)		paint						
	Condition:	good	good	good				
Spill Kit:								
	Date:	4/18/2018						
	Condition:	good						
Fire Extinguishers:		(there are five fire extinguishers in the Highway Garage facility)						
	Date:	4/18/2018						
	Condition:	good						
(Salt and Sand Storage and Use cataloged elsewhere)								

MS4 Annual Report Form

This report is being submitted for the reporting period ending March 9,

2	0	1	9
---	---	---	---

If submitting this form as part of a joint report on behalf of a coalition leave SPDES ID blank.

Name of MS4/Coalition

Village of Ardsley

SPDES ID

N	Y	R	2	0	A	3	1	6
---	---	---	---	---	---	---	---	---

Used Oil Storage Tank:		(used oil pick up is documented in separate Highway Foreman file)					
	Date:	1/11/2019					
	Volume (gallons):	50 gal					
	Condition:	good (serviced by Westchester Waste Oil)					
Motor Fluids:							
	Date:	1/11/2019					
	Volume (gallons):	1 X 50 gal	1 X 50 gal	1 X 50 gal	1 X 50 gal	1 X 50 gal	
	Type:	Diesel	5W30	5W20	15W40	10W30	
	(antifreeze, transmission, etc.)	exhaust					
	Condition:	good	good	good	good	good	
Solvents:							
	Date:	1/11/2019					
	Volume (gallons):	1 X 50 gal	1 X 50 gal	2 X 50 gal	2 X 50 gal		
	Type:	AW32	transmis	truck	salt		
	(alcohol, acetone, etc.)	hydraulic	fluid	wash	wash		
	Condition:	good	good	good	good		
Paint:							
	Date:	1/11/2019					
	Volume (gallons):	3 X 5 gal	9 X 5 gal	4 X 1 pt	5 X 1 gal		
	Type:	blacktop	traffic	enamel	latex		
	(oil, latex, enamel, etc.)	sealer	paint				
	Condition:	good	good	good	good		
Spill Kit:							
	Date:	1/11/2019					
	Condition:	good					
Fire Extinguishers:		(there are five fire extinguishers in the Highway Garage facility)					
	Date:	1/11/2019					
	Condition:	good					
(Salt and Sand Storage and Use cataloged elsewhere)							