

Village of Ardsley Watershed Map



Saw Mill River Watershed:

H-4 1301-0007 (Middle & tribs)
303(d) List POC's = Phosphorus,
Low DO (dissolved oxygen), Pathogens, Chlordane

Bronx River Watershed:

ER-3 1702-0107 (Upper & tribs)
303(d) List POC's = Low DO (dissolved oxygen),
Pathogens



Pollutants of Concern (POC's)

The Village of Ardsley is situated in two watershed regions. Water from the Village drains to the Hudson River via the Saw Mill River on the west side, while water drains to the Bronx River via the Sprain Brook on the east side. Pollutants of Concern (POC's) for the Village of Ardsley are included in the New York State 303(d) list of impaired waters. The 303(d) list can be found at: <https://www.dec.ny.gov/chemical/31290.html>

POC's in the Saw Mill River are phosphorus, low dissolved oxygen, pathogens, and chlordane. POC's in the Bronx River are low dissolved oxygen and pathogens. The Village of Ardsley must implement a stormwater runoff program so that the levels of these POC's do not increase in the receiving waters. POC's and specific measures to control levels:

Phosphorus: Excess phosphorus in runoff causes algal overgrowth. When algae dies, microorganisms break down this excess dead matter, causing an increased oxygen demand for the breakdown process. This results in less dissolved oxygen available for other aquatic dwellers such as fish. Phosphorus levels in detergent and fertilizer products must be removed or reduced. NYS Dishwasher Detergent and Nutrient Runoff Law (2010) link has been posted on the Village website. The local vendor (hardware store) had been apprised of the ban on phosphorus-containing lawn products. Native sustainable plants, which require little or no fertilizer, have been used in community garden activities at Bicentennial Park and Pascone Park BRWI project site. Low phosphorus auto cleaning products were used at the Annual Eco Car Wash event.

Low Dissolved Oxygen: Excess nutrients from fertilizer, leaves and lawn clippings enter runoff. Along with algal overgrowth caused by fertilizer, leaves and clippings result in excess decaying organic matter. Breakdown of this decayed matter by microorganisms results in increased oxygen demand. This leaves reduced dissolved oxygen for aquatic species. Village Code Section 122-4 B (LL No. 11-2004) requires the use of leaf bags and/or rigid containers to keep loose leaves contained. Information about LELE, the "Love 'Em and Leave 'Em" program to promote mulching of leaves and grass clippings, has been distributed online and as hard copy. Leaf mulching information is distributed on site to local landscape contractors. Highway Department has regular pickups of landscape waste for both municipal sites and homeowners.

Pathogens: Fecal waste in runoff results in fecal coliform bacteria in waterbodies. Outfall pipes which deliver stormwater runoff to waterbodies are inspected regularly to insure that there are no cross connections or breaks in the sanitary sewer system. Biodegradable "biobaggies" are given out at Village Hall, Library and Ardsley Day events to promote cleanup of pet waste. Signage is posted throughout the Village reminding residents to pick up after their pets, and there is a fine for violation of this directive.

Chlordane: Chlordane was a pesticide in use, until all use was canceled by EPA in 1988. Some amount is still present in sediment of the Saw Mill River. Consumption of fish from the Middle section (1301-0100) of the river is not recommended.

<https://www.epa.gov/sites/production/files/2016-09/documents/chlordane.pdf>

Stormwater Management Program

The Village of Ardsley is an MS4 – Municipal Separate Storm Sewer System. This means that our storm water runoff and sanitary sewage waste are piped separately, not as a single waste stream. The Phase II Stormwater Management Program addresses the quality of our storm runoff. This program is mandated by the US Environmental Protection Agency and administered by the NYS Department of Environmental Conservation. The aim of the program is to clean up all the waters of the United States to swimmable and fishable quality.

The Program has six components called Minimum Measures (MM's).

MM 1: Public Outreach and Education

MM 2: Public Participation

MM 3: Illicit Discharge Detection and Elimination (IDDE)

MM 4: Construction Site Erosion and Sedimentation Control (ESC)

MM 5: Post-Construction Stormwater Management

MM 6: Pollution Prevention/Good Housekeeping for Municipal Operations

Minimum Measure 1: Public Outreach and Education**General Plan:**

General outreach and educational techniques to address stormwater pollution:

Stormwater Management Program Annual Report:

Hard copies of the SMP Annual Reports are available at Village Hall and the Library.

Reports may also be viewed online at:

<https://www.ardsleyvillage.com/stormwater-project/pages/stormwater-management-program-annual-reports>

Village Board Updates:

Stormwater Management Assistant (SMA) appears regularly at Village Board meetings to present seasonal stormwater topics, as well as discuss pertinent laws, grant applications and activities. Meetings are televised via cable access television. Mayor, Board of Trustees, Village Manager, Village Clerk, Village Attorney, Police Chief and Fire Chief attend meetings. Meeting is re-broadcast daily.

Village Board Minutes are available online at:

<https://ardsleyvillage.civicweb.net/Portal/>

Cable Access Television Public Service Announcement:

A Stormwater Management presentation airs several times daily. Presentations range from 15 minute educational videos to 1 minute “infomercial” type formats. The SW presentation airs for one year. A new production begins airing in the spring of each year.

CATV is broadcast on Optimum Channel 75 & Verizon Channel 32/35.

Village of Ardsley Website: www.ardsleyvillage.com

There is a “Stormwater Project” section under “Departments”:

<https://www.ardsleyvillage.com/stormwater-project>

- includes Contact information for SW Management Officer & Assistant (Outreach Coordinator) and News & Announcements column

Subsections include:

<https://www.ardsleyvillage.com/stormwater-project/pages/stormwater-management-plan>

<https://www.ardsleyvillage.com/stormwater-project/pages/stormwater-management-program-annual-reports>

<https://www.ardsleyvillage.com/stormwater-project/webforms/stormwater-hotline>

- for submission of comments & complaints regarding stormwater issues

<https://www.ardsleyvillage.com/stormwater-project/pages/sw-information>

- general SW tips & DIY projects

<https://www.ardsleyvillage.com/stormwater-project/pages/stormwater-pollution-prevention-plan-swppp>

- SWPPP guidance

<https://www.ardsleyvillage.com/stormwater-project/pages/village-sw-projects>

<https://www.ardsleyvillage.com/stormwater-project/pages/useful-links>

- government links, NGO's, SW topics

<https://www.ardsleyvillage.com/stormwater-project/pages/composting-for-cleaner-water>

<https://www.ardsleyvillage.com/stormwater-project/pages/trees-our-best-sw-practice-invasives-plants-problems>

<https://www.ardsleyvillage.com/stormwater-project/pages/fcp>

- Army Corps of Engineers Flood Control project maps & reports

Village of Ardsley Online Media:

Village of Ardsley SW Facebook page is used to post event notifications & photos from SW Outreach events, as well as SW topics notices. Village of Ardsley Facebook page also posts SW event information & photos, as does Village of Ardsley Twitter page. Village of Ardsley Constant Contact emails are sent out by the Village Clerk to the Village-wide Listserv. SW event information and SW topic notices are sent by Village Constant Contact.

VofA SW Facebook:

<https://www.facebook.com/Village-of-Ardsley-Stormwater-Management-340082942735285/>

VofA Facebook:

<https://www.facebook.com/villageofardsley>

VofA Twitter:

<https://twitter.com/ardsleyvillage>

Stormwater Literature:

USEPA and NYSDEC SW brochures are available at Village Hall, the Community Center and the Library. Literature is replenished as needed. Brochures are also distributed at all Village Stormwater Outreach events. Copies of SW Annual Reports are available at Village Hall and the Library. Information for builders and contractors is available at Village Hall. Copies of the NYS Stormwater Design Manual and NYS Erosion and Sedimentation Control Guidelines are available from the Stormwater Management Officer, to be used at Village Hall; these manuals are also available on disc and may be viewed or copied as needed. Current weblinks to these documents are listed on the SW "Useful Links" webpage.

NYS Stormwater Design Manual:

<http://www.dec.ny.gov/chemical/29072.html>

NYS ESC Guidelines ("Blue Book"):

<http://www.dec.ny.gov/chemical/29066.html>

Public Meetings:

The Stormwater Management Assistant presents outreach lectures to local civic groups. Prior to all SW activities, there are preparatory meetings which include a general overview of the Phase II Program.

Business Outreach:

A specific effort has been made to advise "hot spot" local businesses regarding Phase II responsibilities.

Village Newsletter:

The Ardsley Villager is published at least twice a year. Issues contain a "Stormwater Update" article which details seasonal SW information and upcoming Outreach events.

Implementation:

Full details regarding Outreach and Education can be found in Phase II Stormwater Management Program Annual Reports which are available at Village Hall, the Library and online at the Village Website.

2003-4 (SW Year 1):

VB meetings: present MS4 NOI, SWMP Annual Report
Plan SW webpage with Village Webmaster
SW Literature distributed
Cable Access TV airing SWM Program plan twice daily
Recycling Program in place

2004-5 (SW Year 2):

VB meetings: Stenciling program, "Hotline", "Name That Drain", ESC Law public hearings
Beautification Committee meetings, SWMP Annual Report
Scout meetings: Phase II presentations
Business Outreach: Phase II letters and "After the Storm" brochure
SW Webpage: "Hotline", "Name That Drain"
SW Literature distributed
Village Newsletter: Stormwater Phase II
CATV: Clean up programs
Dog Licensing Drive
Leaf Bag Law amendment

2005-6 (SW Year 3):

VB meetings: Bronx River Coalition MOA, IDDE Law, Saw Mill River Coalition MOA, SWMP Annual Report
Community meetings: Rain Garden (Scouts), Park Planting (Parks & Rec), Garden Club, Outfall Mapping (SW Intern), Chamber of Commerce
Outfall Mapping: door-to-door visits
Webpage: post Annual Reports, Clean up event information, Recycling information
Ardsley Village Yahoo Group: SW event information
SW Literature distributed
CATV: "After the Rain" video
Village Newsletter: Eagle Scout project, IDDE Law

2006-7 (SW Year 4):

VB meetings: Retention basin maintenance, NYSDEC Outfall grant, Salt Shed EAF, Outfall Mapping plan, SWMP Annual Report
GIS Training: Westchester County IT
Recreation Commission meetings: Rain Garden
Community Meetings: League of Women Voters rep., Ardsley High School Env Sci class
Outfall Mapping: door-to-door visits
Webpage: Rain Garden page, Highway Dept information added to Village website
SW Literature distributed
CATV: Stormwater "Commercial"

2007-8 (SW Year 5):

VB meetings: SW District, Outfall Testing, County IMA (MM1/MM2 grant), Town GIS grant, SWMP Annual Report
GIS Training: Westchester County IT, Town of Greenburgh Assessor
Ardsley Day SW information table
Community Meetings: Ardsley High School Env Sci, Ardsley Improvement Committee
Environmental Advisory Committee: reestablished, Susan Porcino, PhD, Chair
Outfall Testing: door-to-door visits
Business Outreach: “Hot Spot” visits
Website: Compost Bin Sale, Westchester County Household Chemical Clean up days
SW Literature distributed
Village Newsletter: Household Chemicals, GIS, No Snow in the ROW
Ardsley School District Newsletter: IPM
CATV: “After the Storm” (EPA/Weather Channel)

2008-9: (SW Year 6):

VB meetings : MM1/MM2 County MOA, Salt Shed, ESC Law, Geosynthetic SW Techniques, BRWI application
Village Newsletter: Water Conservation, ESC Law, Salt Shed, SWMP Annual Report
“Hot Spot” visits
Rivertowns League of Women Voters meeting : January
Cable Access TV: Stormwater “Commercial” (produced 2006)
Website: link to “Storman Speaks” Village of Ardsley SW Video (youtube.com), Online Survey (downspout, lawn care, pet waste)
Village Yahooogroup Event Announcements
SW Update Email: PB – Runoff, VB – revised ESC Law

2009-10 (SW Year 7):

VB meetings: Macy Park SW Techniques, Storm Drain Mapping, Salt Shed, SEMO Hazard Mitigation Plan, SWMP Annual Report
Village Website: Rain Barrel subsection (May 2009), SW Plan, links to County PSA’s
Village Newsletters: Rain Barrels, Salt Shed, BRWI SW Project
Cable TV: “SW Commercial”
Ardsley Day SW Information Table
Enviroscape Program – Concord Road Elementary 4th grade
Additional Village signage regarding pet waste
Expanded Library collection to include SW CD media

2010-11 (SW Year 8):

VB meetings: Porous Pavement, “Green” SW Techniques, ESC Law Amendment, Storm Drain Mapping Grant Consortium, SWMP Annual Report
Village Website: New NYS Detergent Law, Pet Waste, “Green” Construction
Constant Contact: direct Village email, County Household Chemical Recovery Schedule
Village Newsletters: Climate Smart, Driveway Downspouts, Bus Shelter Rain Garden
Cable TV: “County PSA’s” with additional Village information
County GIS Users Group Presentation “SW on a Shoestring”
Ardsley Day SW Information Table
Saw Mill River Coalition/Oasis Day Camp SW Presentation (at Community Center)
Enviroscape Program- CR Elementary 4th grade
Biobaggie Giveaway at Village Hall and Library

2011-12 (SW Year 9):

VB meetings: GIS SD Mapping Project, “Green” Infrastructure (GI), SWMP Annual Report
Village Website: BRWI Project pages – porous pavement, sustainable gardens, rain barrel, rain garden, Westchester County Green Business Directory link
Constant Contact: flood data request, Eco Car Wash event, Compost Bin sale, NYS Nutrient Runoff Law, Love ‘Em and Leave ‘Em leaf program
Ardsley School District Email “Blast”: Eco Car Wash event
Village Newsletters: GI Techniques, POC’s
Cable TV: “Watershed Plans: Protecting and Restoring Water Quality”
AHS Env Science Club presentation
Saw Mill River Coalition SW Tour – BRWI Site visited and on site presentation
“Hot Spot” visit to local business – NYS Nutrient Runoff Law distributed
Ardsley Day SW Information Table
Enviroscape Program- CR Elementary 4th grade
Biobaggie Giveaway at Village Hall and Library

2012-13 (SW Year 10):

VB meetings: Saw Mill River and Bronx River Watershed Advisory Board (WAB’s) Update & County Reconnaissance Plan, SWMP Annual Report
direct emails are sent to VB, PB, ZB and SMO summarizing proceedings of monthly meetings for both WAB’s, as well as all workshops and symposia attended by the SW Management Assistant
Village Website: GIS Tax Parcel Map, “DIY” SW Project pages
Village of Ardsley SW Management Facebook page
Constant Contact: Eco Car Wash
Village Newsletters: Local Waterbodies, SW on Facebook
Cable TV: “Slow it Down, Spread it Out, Soak it In”
BRWI Sustainable Garden Eagle Scout Award presentation
Ardsley Day SW Information Table
Enviroscape Program- CR Elementary 4th grade
Biobaggie Giveaway at Village Hall and Library

2013-14 (SW Year 11):

VB meetings: Saw Mill River and Bronx River Watershed Advisory Board (WAB’s), Sustainable Garden project, LELE, WQIP grant, SWMP Annual Report
direct emails are sent to VB, PB, ZB and SMO summarizing proceedings of monthly meetings for both WAB’s, as well as all workshops and symposia attended by the SW Management Assistant
Village Website: New Virtual Towns website including new interactive SW "Hotline" page, new DPW recycling page, Update SW Plan posted including new SW Modeling section
Village of Ardsley SW Management Facebook page
Constant Contact: Eco Car Wash, SMR Cleanup, Updated SW Plan notice, Climate Change, LELE, Recycling Rules, Road Salt information
Village Newsletters: Plant a Tree, Islands in the Street
Cable TV: "H2O Jo" & SW short
Girl Scout meeting - Sustainable Garden project presentation
AHS Environmental Science Club meeting
Ardsley Day SW Information Table
Enviroscape Program- CR Elementary 4th grade
Biobaggie Giveaway at Village Hall and Library
LELE flyers to Landscape Crews at job sites

2014-15 (SW Year 12):

VB meetings: Street Sweeping & Catch Basin Cleaning, Village Code no resident discharge to ROW, APD/SAYF Drug Giveback, SWMP Annual Report
direct emails are sent to VB, PB, ZB and SMO summarizing proceedings of monthly meetings for both WAB's, as well as all workshops and symposia attended by the SW Management Assistant
Village Website: SW News - Grasscycling, Water Week, Pet Biobaggies; SW Project webpage - Heatherdell Traffic Island Sustainable Garden; Village Map webpage - Virtual VofA Park Tour
Village of Ardsley SW Management Facebook page
Constant Contact: Concord Rd & King St drainage, SAYF Drug Giveback, SMR Cleanup, Eco Car Wash, Groundwork Rain Barrel sale, Pick up after pet reminder, LELE, Ardsley Cares Cleanup, Delaware Acqueduct maintenance
Village Newsletters: Natural Streambed, Structural Soil
VofA Historical Society Newsletter: SW Project
Ardsley School District Email "Blast": Eco Car Wash, SMR Cleanup
Cable TV: "Pollution Prevention"
AHS Env Science Club presentation
Ardsley Day SW Information Table
Enviroscape Program- CR Elementary 4th grade
Biobaggie Giveaway at Village Hall and Library
LELE flyers to Landscape Crews at job sites

2015-16 (SW Year 13):

VB meetings: Sweeper Vac Vehicle Award, SWMP Annual Report
direct emails are sent to VB, PB, ZB and SMO summarizing proceedings of monthly meetings for both WAB's, as well as all workshops and symposia attended by the SW Management Assistant
Village Website: SW News - Fix-a-Leak, Zero P, NYS Waters, HABs; SW Project webpages - Community Center Sustainable Gardens, Gazebo Native Plantings; Village Homepage - Scout Village-wide Cleanup
Village of Ardsley SW Management Facebook page: LELE video
Constant Contact: SMR Cleanup, SW Annual Report notice, Zero P, Gazebo Planting demo, Recycling, SAYF & APD Drug Giveback, LELE
Village Newsletters: Blue Gold, Erosion & Bicentennial Park
Cable TV: "Stormwater, You & Your Community"
Ardsley School District Email "Blast": Gazebo Planting demo
Ardsley Historical Society - Girl Scout SW project presentation
AHS Env Science Club presentation
AMS Earth Science classes SW presentations
Ardsley Day SW Information Table
Enviroscape Program- CR Elementary 4th grade
Concord Road Elementary "Marie Curie Club" SW presentation
Biobaggie Giveaway at Village Hall and Library
LELE flyers to Landscape Crews at job sites

2016-17 (SW Year 14):

VB meetings: LWRP application, Greenway grant, SD Mapping grant IMA, SWMP Annual Report
direct emails are sent to VB, PB, ZB and SMO summarizing proceedings of monthly meetings for both WAB's,
as well as all workshops and symposia attended by the SW Management Assistant

Village Website: SW News - Native Plant Sale, Recycling Event, EPA Water Sense, Drought Watch, SMR
Cleanup; SW webpage - Bicentennial Park Native plantings & Recycling Bin Event

Village of Ardsley SW Management Facebook page: SMR Cleanup, Bicentennial Planting/Recycling event,
LELE

Village of Ardsley Facebook: LELE

Constant Contact: SMR Cleanup, SW Annual Report notice, Village Green Flood Control Maintenance,
LELE, SAYF & APD Drug Giveback

Village Newsletters: Deicer Disposal/Snow Removal, Storm Drain Mapping grant

Cable TV: "Stormwater Pollution & Green Infrastructure Solutions"

Ardsley School District Email "Blast": SMR Cleanup, SAYF & APD Drug Giveback

Cable TV:

AHS Env Science Club presentation

AMS Earth Science classes SW presentations

Ardsley Day SW Information Table

Enviroscape Program- CR Elementary 4th grade

New Rochelle Environmental Planner visit to VofA BRWI site at Pascone Park

Biobaggie Giveaway at Village Hall and Library

New pet signage at Pascone Park

LELE flyers to Landscape Crews at job sites

2017-18 (SW Year 15):

VB meetings: Comprehensive Plan & LWRP, new DPW facility, Haz Mat policy, SWMP Annual Report
direct emails are sent to VB, PB, ZB and SMO summarizing proceedings of monthly meetings for both WAB's,
as well as all workshops and symposia attended by the SW Management Assistant

Village Website: SW News - DEC Water Week, EPA Sprinkler, HABs, EPA Water Sense; SW project
webpages - McDowell Drain Retrofit, Composting for Cleaner Water

Village of Ardsley SW Management Facebook page: Fix-a-Leak, SMR Cleanup, Drain Retrofit

Village of Ardsley Facebook & Twitter: Fix-a-Leak, Recycling Schedule, SMR Cleanup

Constant Contact: SMR Cleanup, DEC Water Week, Composting webpost, Greenburgh Food Scraps, Pollinator
Garden, SW Annual Report notice

Village Newsletters: Zero Phosphorus, Drain Retrofit

Ardsley School District Email "Blast": Recycling Bin Event

Ardsley Historical Society Newsletter: Village SW Personnel

Cable TV: "Stormwater Shorts & Short SW Video"

AHS Env Science Club presentation

AMS Earth Science classes SW presentations

Ardsley Day SW Information Table

Enviroscape Program- CR Elementary 3rd & 4th grade

Biobaggie Giveaway at Village Hall and Library

LELE flyers to Landscape Crews at job sites

2018-19 (SW Year 16): Planned

VB meetings: SW topics, SWMP Annual Report

direct emails are sent to VB, PB, ZB and SMO summarizing proceedings of monthly meetings for both WAB's, as well as all workshops and symposia attended by the SW Management Assistant

Village Website: Virtual Towns Village website upgrade, new AHS SW project webpage

Village of Ardsley SW Management Facebook page: SMR Cleanup, Bicentennial planting, AHS SW project

Constant Contact: Fix-a-Leak, SMR Cleanup, LELE, SW Annual Report notice

Village Newsletters: Fall & Spring editions as available

Cable TV: New SW Video Fall 2018

AHS Env Science Club presentation

AMS Earth Science classes SW presentations

Ardsley BBQ event SW Information Table & demo

Enviroscape Program- CR Elementary 3rd grade

Biobaggie Giveaway at Village Hall and Library

LELE flyers to Landscape Crews at job sites

Minimum Measure 2: Public Participation

General Plan:

Ardsley residents and business owners are actively engaged in achieving the goals of Phase II Stormwater Management in our Village.

Public participation efforts to address POC issues:

Regularly scheduled Clean up events reduce floatables significantly. Local business sells lawn and landscape products that comply with low phosphorus content regulations. Dissolved Oxygen/Oxygen Demand is addressed by the Love 'Em and Leave 'Em leaf program, as well as by Sustainable Gardening Projects which are "hands on" opportunities for residents to learn techniques that will improve runoff quality. The Biobaggie program has resulted in greater resident participation in cleaning up after pets, reducing the pathogen load to local waterbodies.

Village Board Meetings:

Village Board meetings are open to the public. Residents may speak about ideas and concerns regarding stormwater management, thus becoming actively involved in the program.

Village Clean-up Days:

There is an annual Village-wide Clean-up every spring which is sponsored by local Scout groups. The Stormwater Management Assistant advises and helps publicize the event and its significance to water body improvement. In cooperation with Groundwork Hudson/Saw Mill River Coalition, Bridge Street Plaza is an Ardsley cleanup site every year in the Great SMR Cleanup event. Ardsley Cares sponsors a Clean-up event every fall.

Stormwater Outreach Events:

There is an Outreach event every spring. Outreach activities include planting on Village property with specific intent to educate about improvement of water quality facilitated by the type of plant installation. Other outreach activities have included drain stenciling, drain mapping, eco-friendly car wash events, drain pipe retrofit demo, and recycling bin distribution. Outfall testing program includes student interns.

Implementation:

Full details regarding Public Participation can be found in Phase II Stormwater Management Program Annual Reports which are available at Village Hall, the Library and online at the Village Website.

2003-4 (SW Year 1):

VB meetings MS4 NOI presentation Q&A, SWMP Annual Report Q&A
Plan drain stenciling with Westchester County Planning Dept
Streamwalk volunteers

2004-5 (SW Year 2):

VB meetings: SWMP Annual Report Q&A
Clean up: Ashford Park
ESC Law: work sessions and public hearings
Drain stenciling: Girl Scouts and Cub Scouts, plan Eagle Scout project

2005-6 (SW Year 3):

VB meetings: IDDE Law hearings, SWMP Annual Report Q&A
Outfall Mapping: Village SW team including SW Intern
Saw Mill River Coalition "River RATS": riverbank restoration project
Drain Stenciling projects: Eagle Scout, Student Civic group -
Clean up: Bicentennial Park

2006-7 (SW Year 4):

VB meetings: SWMP Annual Report Q&A

Outfall Mapping: Village SW team including SW Intern

Rain Garden installation

Planting event at Ashford Park

Saw Mill River Coalition: drain marking with Americorps, “Free-a-Tree” riverbank invasive vine removal, Great River Sweep Clean up

Clean up: Cub Scouts Village-wide

2007-8 (SW Year 5):

VB meetings: Eagle Scout ceremony, SWMP Annual Report Q&A

Outfall Testing: Village SW team including SW Intern

Ardsley High School Env Sci: Drain Mapping and Marking

Clean up: Cub Scouts Village-wide

Ashford Park “Clean Your Backyard Stream”

2008-9 (SW Year 6):

VB meetings: SWMP Annual Report Q&A

Outfall Testing: SW Intern

Clean-ups: Scout Troop, Saw Mill River Coalition “Free-a-Tree” vine clearing/ AHS Students

Erosion and Sedimentation Awareness/Bicentennial Park planting 4/26/2008

Brownie Scout Annual Flowers Planting Bicentennial Park

Environmental Advisory Board: additional recycling bins in Village parks

2009-10 (SW Year 7):

VB meetings: SWMP Annual Report Q&A

Outfall Testing: SW Intern

Clean-ups: SMRC vine clearing/AHS Students, Boy Scout Village-wide, Ardsley Cares/Village residents

AHS Env Sci: Rain Barrel/Rain Barrel Installation at McDowell Park 5/3/2009

Eagle Scout Storm Drain/Catch Basin Municipal Infrastructure Survey Project (summer 2009)

Bronx River Watershed Initiative Grant awarded

2010-11 (SW Year 8):

VB meetings: SWMP Annual Report Q&A

Outfall Testing: SW Intern

Clean-ups: Boy & Girl Scout Village-wide, AMS Pond/AMS Earth Sci Students, Great SMR Cleanup/AHS Students, Ardsley Cares/Village residents

“Plant-a-Flower” Ashford Park – residents

Ardsley Cares Spring Bulb planting Ashford Park

Bus Shelter Rain Garden American Legion Park

SW Survey (SMRC Oasis Day Camp): Downtown Ardsley

BRWI Project: Stream Bank planting/Eagle Scout, Rain Garden installed /Eagle Scout

2011-12 (SW Year 9):

VB meetings: SWMP Annual Report Q&A

Outfall Testing: SW Intern

Clean-ups: Boy & Girl Scout Village-wide, Great SMR Cleanup/AHS Students, Ardsley Cares/Village residents
Ardsley Garden Club and Brownie Scout Annuals planting/Bicentennial Park

BRWI Project: Sustainable Gardens/Eagle Scout and Girl Scout Gold Award

Eco Car Wash: AHS Env Sci Students

SMRWAB: Village of Ardsley membership

Bridge St Plaza businesses: SW and Flood photos for County Reconnaissance Plan

2012-13 (Year 10):

VB meetings: SWMP Annual Report Q&A

Outfall Testing: SW Intern

Clean-ups: Boy & Girl Scout Village-wide, Great SMR Cleanup/AHS Students, Cub Scout Cleanup, Ardsley Cares/Village residents

Eco Car Wash: AHS Env Sci Students

SMRWAB & BRWAB: Village of Ardsley membership

Sustainable Garden/Heatherdell Traffic Island Pilot project: Girl Scout Gold Award, planning sessions

2013-14 (Year 11):

VB meetings: SWMP Annual Report Q&A

Outfall Testing: SW Intern

Clean-ups: Boy & Girl Scout Village-wide, Great SMR Cleanup/AHS Students, Cub Scout Cleanup, Ardsley Cares/Village residents

Eco Car Wash: AHS Env Sci Students

SMRWAB & BRWAB: Village of Ardsley membership, LOI submitted for Hazard Mitigation grant

Sustainable Garden/Heatherdell Traffic Island Pilot project: Girl Scout Gold Award, seedling & perennials planting, daffodils

2014-15 (Year 12):

VB meetings: SWMP Annual Report Q&A

Outfall Testing & Storm Drain Mapping: SW Intern

Clean-ups: Boy & Girl Scout Village-wide, Great SMR Cleanup/AHS Students, Cub Scout Cleanup, Ardsley Cares/Village residents

Eco Car Wash: AHS Env Sci Students

SMRWAB & BRWAB: Village of Ardsley membership

Sustainable Garden/Community Center planting project: Scouts & SW Intern

AHS Science Symposium: AHS Student SMR macroinvertebrate analysis project

NYSDOT Landscape Architect: new Sustainable Garden design for Route 9A/Ashford Ave intersection

2015-16 (Year 13):

VB meetings: SWMP Annual Report Q&A

Outfall Testing & Storm Drain Mapping: SW Intern

Clean-ups: Boy & Girl Scout Village-wide, Great SMR Cleanup/AHS Students, Cub Scout Cleanup, Ardsley Cares/Village residents

Sustainable Garden/Gazebo at Pascone Park event: AHS Env Sci Students

SMRWAB & BRWAB: Village of Ardsley membership

Bicentennial Park installation of planting beds & daffodil bulbs: SW Extern & Ardsley Garden Club

AHS Student additional macroinvertebrate study at SMR outfall

2016-17 (Year 14):

VB meetings: SWMP Annual Report Q&A

Outfall Testing & Storm Drain Mapping: SW Intern

Clean-ups: Boy & Girl Scout Village-wide, Great SMR Cleanup/AHS Students, Cub Scout Cleanup, Ardsley Cares/Village residents

Sustainable Garden/Bicentennial Park: AHS Env Sci Students

SMRWAB & BRWAB: Village of Ardsley membership

Recycle Your Recycling Bin event at Bicentennial Park: AHS Env Sci Students & VofA residents

Invasive Vine Removal at Ardsley Library: Scouts & Ardsley Garden Club

2017-18 (Year 15):

VB meetings: SWMP Annual Report Q&A

Outfall Testing: SW Intern

Clean-ups: Boy & Girl Scout Village-wide, Great SMR Cleanup/AHS Students, Cub Scout Cleanup, Ardsley Cares/Village residents

McDowell Park Drain Retrofit Demo project: AHS Env Sci Students

SMRWAB & BRWAB: Village of Ardsley membership

Pollinator Garden installation at Ardsley Library: Scouts & Ardsley Garden Club

Planting at Silliman Park & Blue Star Memorial Addyman Square: Ardsley Cares

2018-19 (Year 16): Planned

VB meetings: SWMP Annual Report Q&A

Outfall Testing: SW Intern

Clean-ups: Boy & Girl Scout Village-wide, Great SMR Cleanup/AHS Students, Cub Scout Cleanup, Ardsley Cares/Village residents

Planting at Bicentennial Park: AHS Env Sci Students (garden beds) & Scouts (lower park Heritage signs)

SMRWAB & BRWAB: Village of Ardsley membership

Recycle Your Recycling Bin II event at Bicentennial Park: AHS Env Sci Students & VofA residents

Minimum Measure 3: Illicit Discharge Detection and Elimination**General Plan:**

The Village of Ardsley is one square mile in area and is primarily residential property. Included as residential property are the Stonegate condominium complex and the Woodlands Senior Housing. There are three school campuses, Concord Road Elementary School, Ardsley High School and OLPH School, comprising 45 acres, three Churches comprising 4 acres, a municipal Fire House, Village Hall, Community Center and Library covering 2 acres and a small downtown commercial area. The downtown area is retail only, non-industrial along Route 9A. There are two municipal parks, Pascone and McDowell, and several pocket parks totaling 30 acres of Village property. Control of litter and pet waste are priorities to address POC's in Ardsley.

Desktop Analysis:

A review of all sites in the Village was prepared in 2007. "Hot Spot" businesses are noted in red. The Stormwater Management Assistant visited each of these businesses, spoke with owners to explain Phase II goals and distributed letters of introduction and SW literature.

Map of businesses is included in this plan (see Appendix A). This map was updated in 2018.

Outfall Mapping:

Village of Ardsley Stormwater Management undertook preliminary outfall mapping in beginning in 2005. Outfall mapping was completed in November 2006 under the auspices of NYSDEC Grant C302485. Field work was conducted by Azertia, Inc. with the help of the Stormwater Management Assistant.

Outfall maps are included in this plan (see Appendix B). Outfall photos are on file at the Highway Department and Village Hall.

Outfall Inspection:

Inspection of Village outfalls began in 2007. Thus far, the program has exceeded the recommended NYSDEC goal of inspecting 20% of all outfalls per year. Inspection protocol uses data forms provided by NYSDEC.

Sample inspection sheet is included in this plan (see Appendix C). Inspection data sheets for the Village are available for examination at Village Hall on the Village LAN and at the DPW Office on the DPW Foreman's computer.

No significant illicit discharges have been detected thus far. All outfalls in the Village will be inspected and the entire cycle will be repeated on a routine basis.

Enforcement Policy:

Complaints regarding littering, dumping, pet waste, spills or any other condition which may impact runoff water quality are received by Village Department of Public Works, Police Department and Village Hall staff.

All reports regarding stormwater are investigated by the Stormwater Management Officer who also serves as Building Inspector. He is assisted by the the SW Management Assistant. Warnings, followed by Violation Notices are issued as necessary, and all issues are pursued until complete resolution of the problem.

Village of Ardsley**NYR20A316**

Ardsley Police Department patrols the Village and issues summonses for littering, dumping and improper pet waste disposal. Fines for dumping range from \$250 to \$2000 (Village Code 122-10) and improper pet waste disposal from \$25 to \$250 (Village Code 90-12).

Ardsley Highway Department regulates garbage collection and recycling. Summonses are issued for failure to separate organic leaf and grass clipping waste from household trash.

Ardsley Fire Department handles all cases involving spills in the Village. Members of the Fire Department are certified in Hazardous Material containment and clean-up. Spill cases are referred to the Police Department for enforcement as necessary.

Village of Ardsley IDDE Local Law No. 8-2005 was enacted and incorporated into the Village Code. Section 170-13 stipulates fines from \$350 to \$1000 for illicit discharge violations. The text of that law is included in this plan.

Records of any and all illicit discharges are published each year as part of the SWM Annual Report.

IDDE Law: Village of Ardsley Local Law No. 8-2005 (see Appendix D)

Minimum Measure 4: Construction Site Erosion and Sedimentation Control**General Plan:**

Sediment and floatables are pollutants of concern during all construction projects. Erosion control and trash entrapment practices must be installed and monitored during construction.

The Village of Ardsley is nearly completely built-out and very few undeveloped parcels remain. Moreover, remaining undeveloped parcels are primarily smaller than one acre in area. In addition, many construction projects are tear-down sites which had been previously developed.

The Village of Ardsley modified the standard NYS definition for “Land Development Activity” to include sites smaller than one acre if there is new development or a tear-down. Sites smaller than one acre require a Stormwater Site Plan and are inspected as stormwater practices are installed. Sites larger than one acre require a full Stormwater Management Pollution Prevention Plan (SWPPP) and full inspection protocol.

SWPPP Preparation:**SWPPP Site Plan (< 1 acre project):**

Plan must indicate location of sediment control practices to be used during the construction activities. Two foot topographic map is required. Plan must indicate location of permanent stormwater control practices. This plan is submitted for review and approval as part of the Site Plan Review process. A sample plan is included in this plan (see Appendix E).

Inspection Form (< 1 acre project):

Sediment control practices must be inspected weekly as part of overall site inspections. A sample inspection sheet is included in this plan (see Appendix E).

Full SWPPP (> 1 acre project):

A SWPPP may be organized in the following format:

- A. Narrative Report describes the general information about the site and the planned project.
- B. Maps are used to illustrate the location of the features and technical details of the site.
- C. Plan Components:

- Erosion and Sediment Control

- Water Quality Control

- Water Quantity Control

- D. Construction Sequence Schedule is a schedule of activities to be implemented during and after construction.

Detailed instructions for preparation of a SWPPP are contained in “Instruction Manual for Stormwater Construction Permit” which is available at Village Hall from the Building Inspector (SMO) and online "NYSDEC Construction Stormwater Toolbox" at:

<http://www.dec.ny.gov/chemical/8694.html>

The SWPPP must be approved by the Village of Ardsley (MS4). The SWPPP Acceptance Form is included in this plan (see Appendix E).

SWPPP Inspection Form (> 1 acre project):

Projects which require a SWPPP must be inspected according to the schedule outlined in Village Code 171-9 "Maintenance and Inspection During Construction" and Village Code 171-10 "Construction Inspection" of Local Law 1-2011. A sample Inspection Form is included in this plan (see Appendix E).

Construction Projects:

2003-4 (SW Year 1):

Saw Mill River Road - > 5 acres (project began prior to 2003)

Sylvia Avenue - > 3 acres (project began prior to 2003)

2004-5 (SW Year 2):

No new projects > 1 acre

2005-6 (SW Year 3):

Concord Road - < 1 acre

Dellwood Lane - < 1 acre

Flintlock Lane - < 1 acre

2006-7 (SW Year 4):

Ashford Avenue - < 1 acre

American Legion Drive - < 1 acre

Dellwood Lane - < 1 acre

Saw Mill River Road - < 1 acre

Rest Avenue - < 1 acre

2007-8 (SW Year 5):

Saw Mill River Road - < 1 acre

(Macy Park/Saw Mill River Road - > 5 acres, Westchester County SPDES)

2008-9 (SW Year 6):

Saw Mill River Road - < 1 acre

Rest Avenue - < 1 acre

2009-10 (SW Year 7):

Riverview Avenue - < 1 acre

Elm Street - < 1 acre

Shady Avenue - < 1 acre

2010-11 (SW Year 8):

Park Avenue - < 1 acre

Beacon Hill Road - < 1 acre

2011-12 (SW Year 9):

Beacon Hill Road - < 1 acre

Ashford Avenue - < 1 acre

Elm Street - < 1 acre

2012-13 (SW Year 10):

Wilmoth Avenue - < 1 acre

2013-14 (SW Year 11):

Windsong Road - < 1 acre

2014-15 (SW Year 12):

Windsong Road - < 1 acre

Saw Mill River Road - > 1 acre, full SWPPP

Heatherdell Road - < 1 acre

2015-16 (SW Year 13):

Heatherdell Road - > 1 acre, full SWPPP

Wilmoth Avenue - < 1 acre

Ridge Road - < 1 acre

2016-17 (SW Year 14):

Saw Mill River Road - < 1 acre

Cross Road/Ashford Avenue - 5 acres, full SWPPP

2017-18 (SW Year 15):

Ashford Avenue - < 1 acre

Ridge Road - < 1 acre

Bramblebrook Road - < 1 acre

Dellwood Road - < 1 acre

2018-19 (SW Year 16):

File Access:

All active project records are kept in the Building Inspector Office.

Projects < 1 acre are kept as active files until 6 months following completion. Weekly field inspection reports are retained for 9 months following completion of the project. Final inspection report will contain all installed stormwater practices “as built”. Any stormwater-related violation files will be retained for 6 years as per Records Management policy.

For projects > 1 acre, all files will be maintained in perpetuity. They will remain in active files for 1 year following completion. After 1 year, they will be archived.

ESC Law: Village of Ardsley Local Law No. 1-2011 (see Appendix F)

Minimum Measure 5: Post-Construction Stormwater Management**General Plan:**

Final inspections, which include inspection of stormwater treatment practices, are conducted upon completion of all permitted construction projects in the Village. All stormwater control practices must receive final approval before a Certificate of Occupancy is issued.

Sample Stormwater Practice Maintenance Agreement:

A Sample Agreement is included in this plan. Please see Schedule B “Sample Stormwater Control Facility Maintenance Agreement” section of Village of Ardsley Local Law 1-2011 (see Appendix F).

Municipal Stormwater Practices:

As an MS4, the Village of Ardsley Highway Department installs and maintains a system of catch basins and storm drains throughout the Village. There are two large-scale municipal stormwater practices in the Village. They are part of the Army Corps of Engineers Flood Control Project (FCP), and are located at the Village Green and Addyman Square. The Village Green Detention Basin (W 73° 50.8301' N 41° 00.8049'), located on the southern border of Westchester County park property (Macy Park) and just west of Route 9A with a retaining wall that abuts the northbound lanes of the New York State Thruway, is a 0.55 acre facility. The Addyman Square Detention Basin (W 73° 50.9320' N 41° 0.7222') is bordered on the south by the Ashford Avenue Bridge retaining wall and the northbound NYS Thruway retaining wall on the west, and is a 0.08 acre facility. Both basins treat stormwater prior to release into the adjacent Saw Mill River. These practices were constructed before 2003. There are two large-scale privately-owned stormwater treatment practices in the Village. Dellwood Retention Pond, installed prior to 2003 and located just south of Dellwood Lane (W 73° 49.9569' N 41° 01.0974'), is 0.71 acres and contains an aeration pump system and trash collection booms at the pond inlet. Dellwood Pond is maintained by the Dellwood Residents Association. The Woodlands Senior Housing Development has two infiltration basins (W 73° 50.6267' N 41° 01.3001' and W 73° 50.6225' N 41° 01.3448') situated next to Route 9A which treat hillside runoff before entry to Macy Park and on to the Saw Mill River. These basins were installed in 2004 and Woodlands Housing is responsible for their maintenance.

Municipal SW Practices Installed & Repaired Since 2003:

- 2003: Two storm drains and head wall installed at the northwest corner of McDowell Park, east of Jordan Lane
One catch basin in the center of Field 1 at McDowell Park
- 2005: Village Green Detention Basin vegetation removed and silt dredged
- 2007: One catch basin and head wall installed on Almena Road
Twenty-five catch basins repaired
- 2008: Three catch basins installed on Shady Road
Twenty catch basins repaired

2009: Five catch basins repaired - Almena, Beacon Hill, Powderhorn, Augustine, Bridge St Pkg Lot

2010: Four catch basins repaired - Ridge, Fuller, Larchmont, Huntley

2011: Five catch basins repaired - Kensington, Western, McDowell Pkg Lot, Heatherdell, Agnes

2012: Six catch basins repaired - Sweet Briar, Judson, ASVAC Pkg Lot, McCormick, Revere, McKinley

2013: Five catch basins repaired - Almena, Elm, Revolutionary, Addyman Square, Legion Park

2014: Three catch basins repaired - Larchmont, Euclid, Fairmont

2015: Five catch basins repaired - Concord, Morningside, Rest, Shorthill, Markwood

2016: Village Green Detention Basin vegetation removed and silt dredged
Five catch basins repaired - Fairmont, Cross, Chimney Pot, Felix, Carriere

2017: Three catch basins repaired - Ridge, Hilltop, Farm

2018: Eight catch basins repaired - Heatherdell, Bramblebrook, Abington, Carriere, Bridge St Pkg Lot, Columbia, Victoria, Alexander Hamilton

Minimum Measure 6: Pollution Prevention/Good Housekeeping for Municipal Operations**General Plan:**

The Village of Ardsley Highway Department (Department of Public Works) provides all roadway and drainage maintenance, rubbish collection and public facility (municipal buildings, parks, sanitary sewer and storm sewer) maintenance for the Village. Some downtown merchants employ private carting companies and, together with Highway, strive for a reduction in floatables, POC, by proper containment and removal of trash. Ardsley Local Law No. 7-2005 requires fenced containment areas for commercial garbage. Highway department manual pick-up and automated street sweeping address the problem of pathogens, POC, by keeping areas free of pet waste. Sediment is also controlled in this manner.

A detailed accounting of all Highway Department activities is published yearly as part of the Stormwater Management Program Annual Report prepared in compliance with Phase II requirements.

Street Sweeping:

The Village is fortunate to have received WQIP grant funding in 2015 for the purchase of a Street Sweeper/Vacuum Vehicle. Streets are cleaned every other week during the spring season and every week during the fall. Additional sweeping is performed as necessary after storm events. Ardsley Local Law No. 11-2004 requires separate bagging of all leaves and garden waste and the Village does not permit dumping of unbagged yard waste streetside. All leaves and garden waste are bagged separately and carted to organic waste yards for disposal.

Catch Basin and Storm Drain Maintenance:

There are 597 catch basins and storm drains mapped in the Village of Ardsley. They are all vacuumed every other year on a rotating basis using the Village Vacuum Vehicle. More frequent cleaning of downtown basins and drains, and emergency cleaning is performed as necessary. They are repaired and new catch basins are installed as needed by the Highway Department. Westchester County Department of Health adds larvacide to the drains to control the spread of West Nile disease.

“No Dumping” decals have been affixed to all storm drains, a task which was accomplished by the efforts of local Scout volunteers and the office of Westchester County Watermaster (Westchester County Planning Department). GIS Mapping of storm drains and catch basins began in 2007 as a volunteer effort by Ardsley High School Environmental Science students. The next phase of GIS Mapping was conducted in summer 2009 as a local Eagle Scout project. Additional GIS Mapping was undertaken by the Stormwater Management Assistant and Intern in summer 2009. Surveying continued until all storm drains and catch basins were measured, photographed and catalogued, and this data collection was complete in 2017. New drains and basins will be added and non-functioning ones will be delisted as necessary. In 2012, all storm system features were located by GPS and a map was provided by the Sleepy Hollow Mapping Consortium grant project. An updated map was provided by the Consortium in 2018.

Garbage Collection:

Garbage is collected twice weekly in the entire Village, either Monday/Friday or Tuesday/Friday. There is an active recycling program and the percent of garbage which is recycled increases every year. Newspaper and cardboard are collected every Wednesday, and commingled glass, plastic and metal are collected every Thursday. In 2008, Saturday morning drop-off hours were reestablished for residents wishing to bring their recycling items directly to the Highway Department facility. The Village averages 12 tons per month for glass and plastic and 39 tons per month for paper. A trash and recycling collection schedule, which includes rules for collection and dates for Westchester County Household Chemical Waste Collection, is prepared every January and is available online at:

http://www.ardsleyvillage.com/sites/ardsleyny/files/u60/sanitation_2018.pdf

In addition, County Clean-up Day schedules are posted on the Village website and Village Cable Access TV Cablevision Channel 75 and Verizon FIOS Channel 32/35.

Members of the Highway Department also aid the volunteer Village Clean-up efforts by providing trash bags and pick up of all trash collected at the Clean-up events.

Asphalt Use:

Village of Ardsley Highway Department patches roadways during the spring and fall. Complete resurfacing of selected Village streets is done by contracted paving services. Asphalt is not stored at Village facilities, it is only brought in as needed and used immediately.

Road Salt Application:

The majority of Ardsley streets are steep inclines, and thus require salt application in winter months for safety reasons. Village of Ardsley Highway Department applies salt before snowstorms in accordance with the most efficient technique for salt application. Salt is sparingly reapplied during icy conditions throughout the winter season. Salt is stored indoors at the Village Salt Shed, located 1 block south of the Highway Department garage.

Vehicle Maintenance:

Village of Ardsley Highway Department provides all service for Highway, Police and Fire Department vehicle in-house as a cost-saving measure. All motor oil and fluids are properly contained in a storage unit which has appropriate secondary containment. Vehicles are washed and serviced indoors at the Highway garage. Garbage trucks are washed every week. Pick-up trucks and other Highway vehicles are washed every other week. Highway vehicles are serviced every 2 months on average, and Police cars are serviced every 3000 miles. Care is taken to clean up any spills and Highway personnel are trained in correct clean up techniques employing absorbent material.

Landscape Maintenance Methods:

There are approximately 30 acres of parkland in the Village of Ardsley. Parkland includes two major recreational facilities, Pascone Park in the southeast and McDowell Park in the northeast, and several parklets downtown. Village of Ardsley Highway Department collects trash and recycled material, mows lawns, plants annual flowering plants and provides irrigation from a water truck during warm weather. One sprinkler system has been installed at Pascone Park, but it is used sparingly. A contracted landscape maintenance service prunes trees and plants additional annual flowering plants. No herbicide, pesticide or chemical fertilizer is applied to any municipal property. Ardsley School District property, which includes Ardsley High School and Concord Road Elementary School located within the Village boundaries, is strictly maintained using Integrated Pest Management (IPM) techniques and no chemical applications are used on school property.

Education and Training:

There are 10 NYS certified (Westchester County FTC and Office of Emergency Management) Hazmat Technicians in Ardsley Fire Department and 2 in the Highway Department. The Assistant Highway Foreman is certified in Hazmat Awareness and also serves as the Village Fire Chief. Three Fire Department members are certified in Hazmat Operations and also serve on the Westchester County Hazmat Response Team. V. Coulehan, Ardsley Fire Department, is second in command of the Response Team. All certified personnel receive training every year for recertification.

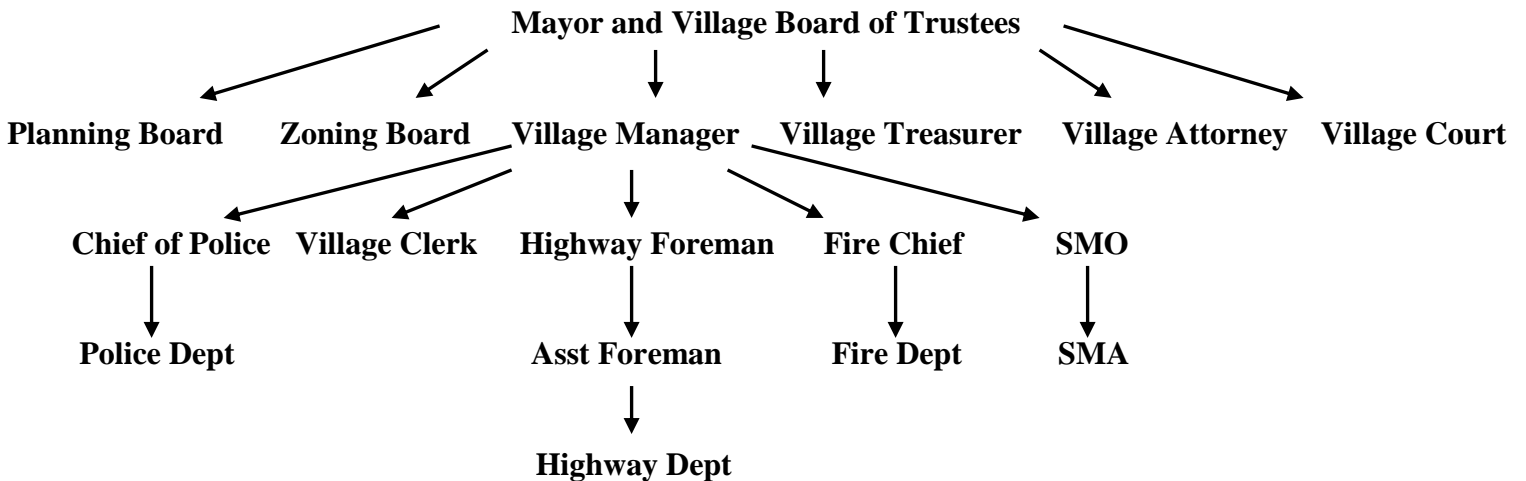
D. DiGregorio Highway Foreman, P. Lindsay, Assistant Foreman, L. Tomasso, Stormwater Management Officer and L. Kuhn, SW Assistant attend several SW training seminars and workshops each year. Highway Department personnel attend seminars on a rotating basis. In addition, in-house “SW Pollution Prevention BMP’ Training Program” is conducted and all new employees attend training, as well as review course for other employees. The Best Management Manual is distributed to all members of the Highway Department and a copy is available at the Highway Department Office.

BMP Manual: (see Appendix G)

Stormwater Management Personnel

The Village of Ardsley is governed by an elected Mayor and Board of Trustees. Daily operation of the Village is administered by the Village Manager, Village Clerk and Village Treasurer. Services of a part-time Village Attorney and Village Magistrate are retained. Village Court is in session twice weekly. The Village has a full-time Chief of Police and 17 member Police Force. Highway Department has a full-time Foreman and Assistant Foreman and 14 additional employees. There is a volunteer Fire Department, some members of whom are also Highway Department employees. There is a full-time Building Inspector who is also the Stormwater Management Officer (SMO). There is a part-time Stormwater Management Assistant (SMA) to help with outreach and outfall inspection. The Village does not have a full-time Engineer or Planner. There is an appointed Planning Board, Zoning Board and volunteer Acting Engineer. Professional Engineering and Planning services are contracted as needed.

Personnel Diagram:



Stormwater Management Budget

Phase II Stormwater Management Program is funded as part of the Highway Department budget under “Storm Sewers” Account # 8140. Line Items are as follows:

.100 Personnel Services – Skilled Laborer Level III salary

.110 Part Time – Stormwater – Stormwater Management Assistant and Student Intern salary

.412 Postage – Mailing reports, applications and community literature (General Fund 001.1620.0412)

.415 Operating Supplies – Stormwater – Water testing kits, paint, tape, garbage bags, gloves, plants, soil and other items necessary for activities associated with Phase II SW Management
Printing reports, applications and community literature,
Catch Basin repair & replacement materials

.483 Storm Sewer Maintenance – Expenses for equipment and disposal service

.485 Training – SW Courses and seminars for Village personnel

Budgets 2015 – 2018:

Date Prepared: 04/16/2018 04:53 PM

Report Date: 04/16/2018

Account Table: GENLIB

Alt. Sort Table:

VILLAGE OF ARDSLEY
Budget Preparation Publication

Fiscal Year: 2018 Period From: 6 To: 5

BUD4050 1.0

Page 44 of 70

Prepared By: VILLAGE MANAGER

Account Description	2015 Actual	2016 Actual	Original 2017 Budget	Adjusted 2017 Budget	2017 Actual	2018 REQUESTED Stage	2018 RECOMMEND Stage	2018 ADOPTED Stage
Fund 001								
Type E								
Dept 8140								
GENERAL FUND								
Expense								
STORM SEWERS								
001.8140.0100								
PERSONNEL SERVICES REGULAR	0.00	691.20	0.00	0.00	0.00	0.00	0.00	0.00
001.8140.0110								
STORM WATER P / T PERSONNEL	16,162.36	17,120.31	18,426.00	18,426.00	14,529.40	18,907.00	19,262.00	19,162.00
001.8140.0412								
POSTAGE	0.00	18.27	0.00	0.00	0.00	0.00	0.00	0.00
001.8140.0415								
OPERATING SUPPLIES	499.78	1,303.63	1,500.00	1,500.00	1,863.49	11,200.00	11,200.00	12,200.00
001.8140.0483								
SEWER MAINTENANCE	2,098.75	7,163.18	5,000.00	5,000.00	2,235.18	5,000.00	5,000.00	5,000.00
001.8140.0485								
PROFESSIONAL TRAINING	195.00	230.00	250.00	250.00	225.26	250.00	250.00	325.00
Total Dept 8140								
STORM SEWERS								
	18,955.89	26,528.59	25,176.00	25,176.00	18,853.33	35,357.00	35,712.00	36,687.00

Stormwater Inter-municipal Agreements

Sleepy Hollow NYSDEC Grant Consortium (Outfall Mapping, Staff Education, Storm Drain Mapping – work completed)

Bronx River Coalition (Westchester County Department of Planning)

Saw Mill River Coalition (Groundwork Hudson Valley)

Westchester County Department of Information Technology (GIS Data Sharing)

Westchester County Assessor’s Office (Pictometry & Facet GIS Project)

Westchester County Department of Planning (MM1 & MM2 Implementation – work completed)

Town of Greenburgh Assessor’s Department (GIS Data – Transmap project)

Town of Greenburgh Hazard Mitigation Plan (work completed)

Westchester County Office of Emergency Management (Hazard Mitigation Plan)

Westchester County Department of Health (Storm Drain marking and larvacide application)

Westchester County Legislature Saw Mill River Watershed Advisory Board (IMA pending)

Westchester County Legislature Bronx River Watershed Advisory Board (IMA pending)

Sustainable Westchester (member)

Stormwater Websites

Phase II Stormwater Management:

<https://www.epa.gov/npdes/npdes-stormwater-program>

<http://www.dec.ny.gov/chemical/8468.html>

<https://planning.westchestergov.com/environment/stormwater-management> [http://](http://www.greenburghny.com/Cit-e-Access/webpage.cfm?TID=10&TPID=5806)

www.greenburghny.com/Cit-e-Access/webpage.cfm?TID=10&TPID=5806 [http://](http://www.ardsleyvillage.com/stormwater-project)

www.ardsleyvillage.com/stormwater-project

MS4 SPDES Permit:

http://www.dec.ny.gov/docs/water_pdf/ms4permit.pdf

NYS SW Management Design Manual:

<http://www.dec.ny.gov/chemical/29072.html>

NYS Standards and Specifications for Erosion and Sedimentation Control:

<http://www.dec.ny.gov/chemical/29066.html>

SPDES Construction Permit:

http://www.dec.ny.gov/docs/water_pdf/gp015002.pdf