

# Village of Ardsley Community Update on the Comprehensive Plan



# **WHAT WE USE THE LAND USE SYSTEM TO ACCOMPLISH . . .**

**“Among our most important powers of local government is the responsibility to undertake comprehensive planning and to regulate land use to protect the public health, safety and general welfare.”**

N.Y. Town, Village, General City Law

# WHAT IS A COMPREHENSIVE PLAN?

*Planning helps individuals and communities prepare for the future.  
Planning also helps communities adjust to new needs—such as changing  
technology.*

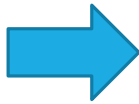
A written document formally adopted by the local legislature that contains goals, objectives and strategies for the future development and conservation of the community.

“Comprehensive planning is society’s insurance that the public welfare is served by land use regulation.”

*Pace Land Use Law Center: The Comprehensive Plan – The Foundation of  
New York’s Land Use System*

# COMPREHENSIVE PLAN STRUCTURE

Then

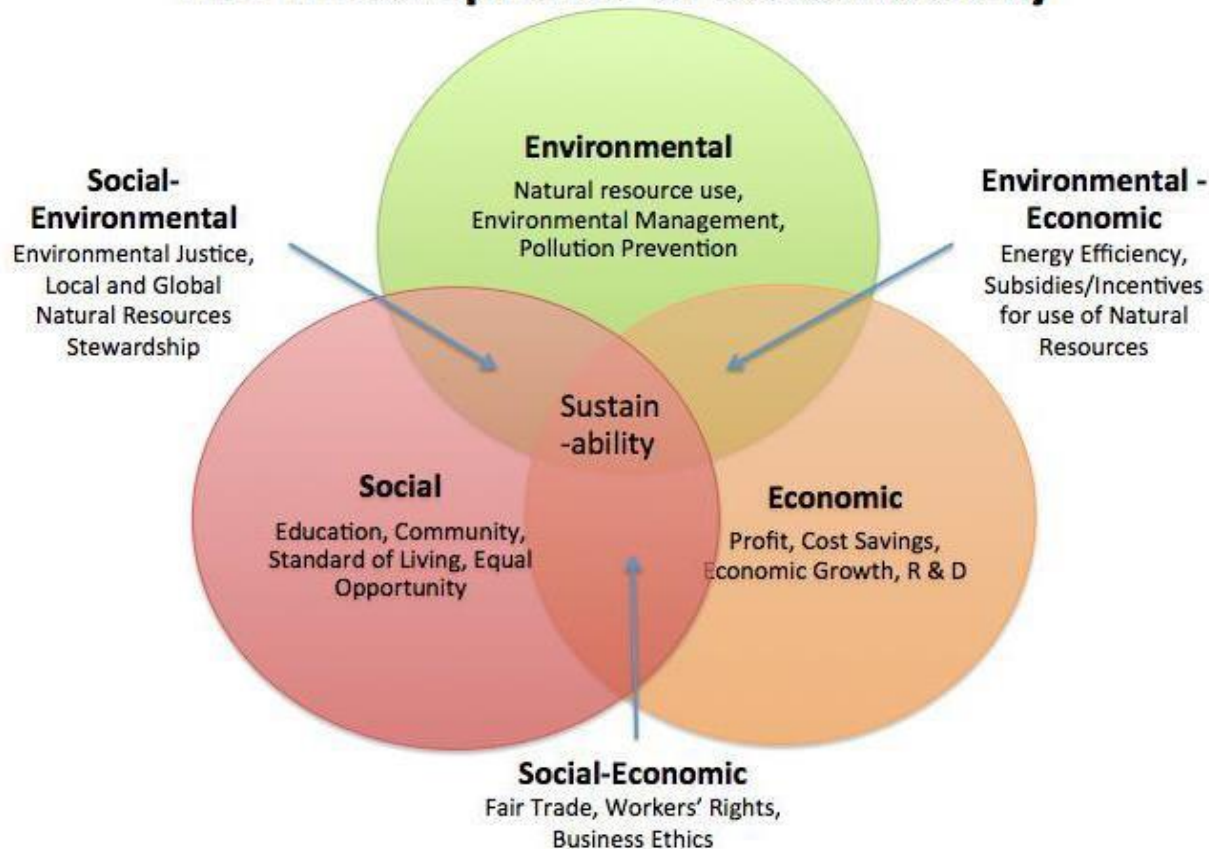


Now



# SUSTAINABILITY AND THE COMPREHENSIVE PLAN

## The Three Spheres of Sustainability



- **APA Comprehensive Plan Standards for Sustaining Places**
  - Livable Built Environment
  - Harmony with Nature
  - Resilient Economy
  - Healthy Community
  - Responsible Regionalism
- **NYS Climate Smart Communities Certification Program**
- **Saw Mill Revitalization Plan**
- **Market Analysis and Development Strategy**



# MAJOR THEMES OF ARDSLEY'S COMPREHENSIVE PLAN

## Build



## Protect



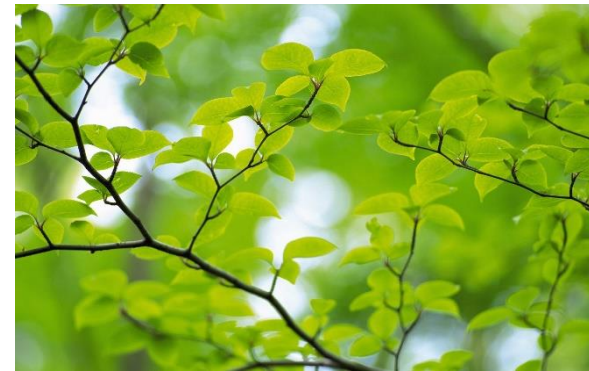
## Strengthen



## Connect



## Provide



## Sustain

# Comprehensive Plan Themes

**Build** encompasses the Village's physical features and land uses that help create a community where people live, work and recreate

**Provide** addresses common public benefits, such as parks and recreation opportunities, municipal services and public safety programs, public facilities, and institutions

**Connect** addresses the ways people travel to, from and around Ardsley

**Protect** discusses Ardsley's natural resources and sensitive areas

**Strengthen** focuses on the businesses, services, trades, productive facilities, and related activities that provide jobs for Ardsley's population and contribute to the Village's economic health

**Sustain** focuses on maintaining Ardsley's long-term viability by reducing the Village's carbon footprint, managing its waste, and developing Ardsley's capacity to recover quickly from catastrophic events

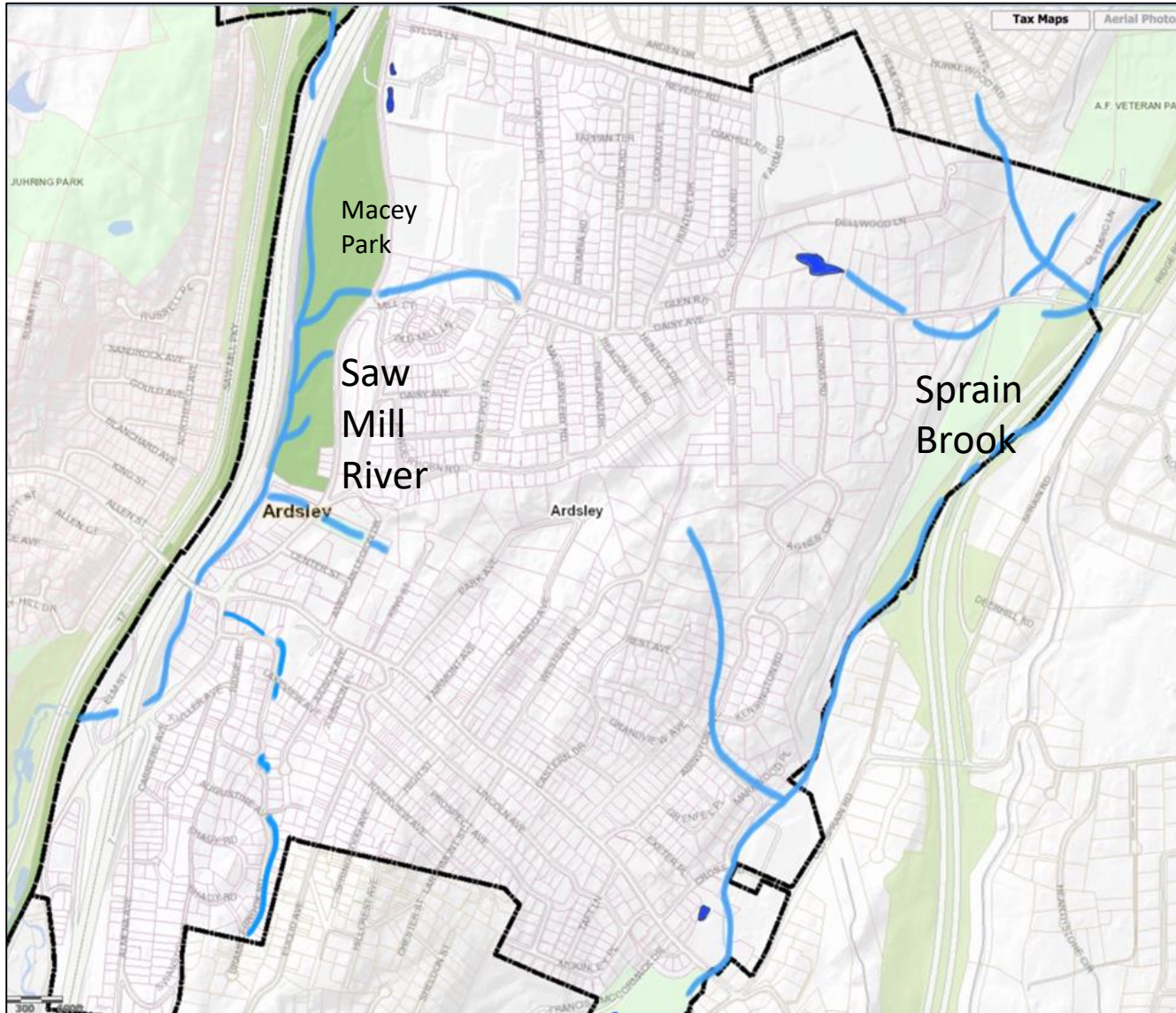


## SAW MILL RIVER REVITALIZATION PLAN Project Update – June 24<sup>th</sup>, 2020





# SAW MILL RIVER REVITALIZATION PLAN: PURPOSE AND TASKS



## **PLAN PURPOSE**

- ☐ Establish a long-term policy framework for maximizing the public use and economic vitality of the Saw Mill River while also preserving its natural resources and viewsheds.

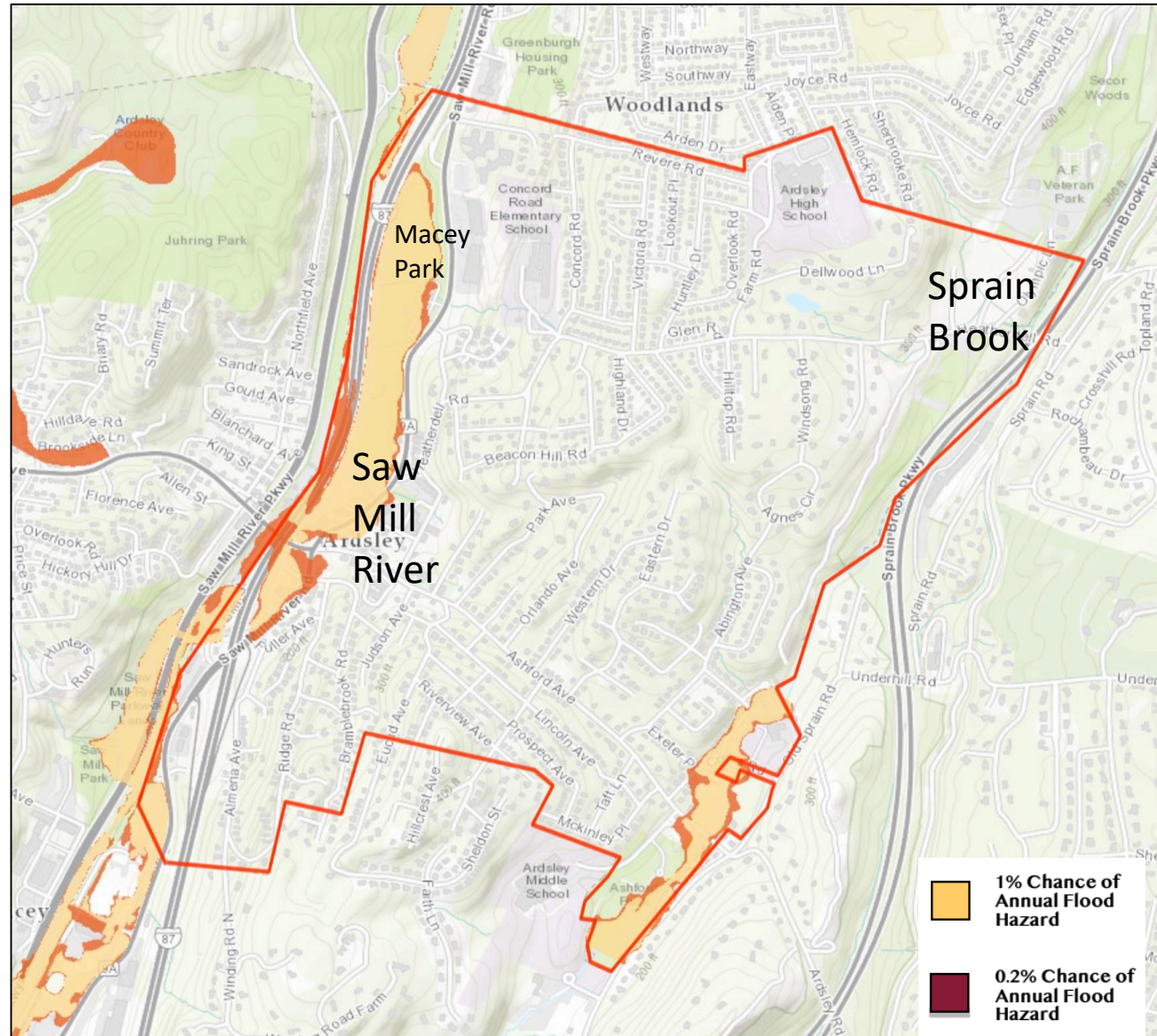
## **KEY TASKS**

- ☐ Establish Geographic Context
- ☐ Document Existing Conditions
- ☐ Inventory Existing Policies
- ☐ Propose New Policies
- ☐ Integrate Policies into Comprehensive Plan

# SAW MILL RIVER REVITALIZATION PLAN: POTENTIAL POLICY THEMES

## POLICY THEMES

- ☐ Resource Preservation
- ☐ Resiliency Measures
- ☐ Downtown Revitalization
- ☐ Access To Recreation
- ☐ Social Inclusion





# Timeline for Adoption

**Integrate Ancillary Studies into Comprehensive Plan July 30th, 2020**

**Conduct Comprehensive Plan Public Education Programs July 30th, 2020**

**Complete Draft Comprehensive Plan September 30th, 2020**

**Village Launches SEQRA Process for Draft Comprehensive Plan October 1st, 2020**

**Village Assesses Environmental Impact for Comprehensive Plan November 30th, 2020**

**Village's Formal Adoption of Comprehensive Plan December 31st, 2020**

## Connect with the Consultants

Tiffany Zezula, [tzezula@law.pace.edu](mailto:tzezula@law.pace.edu)

Jessica Bacher, [jbacher@law.pace.edu](mailto:jbacher@law.pace.edu)

Kevin Dwakra, [kdwarka@kevindwarka.com](mailto:kdwarka@kevindwarka.com)